

Light efficiency:



Light quality:



Color temperature:

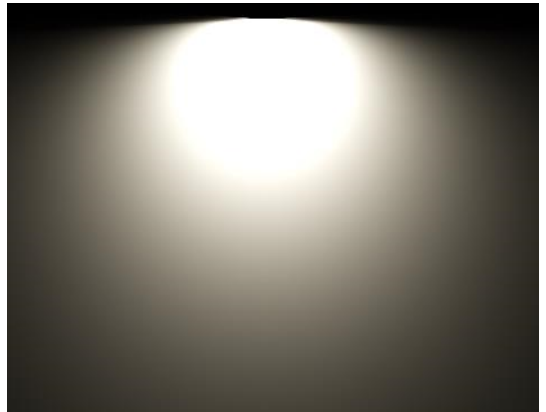


Output: 1500 lm

Peak: 492 cd

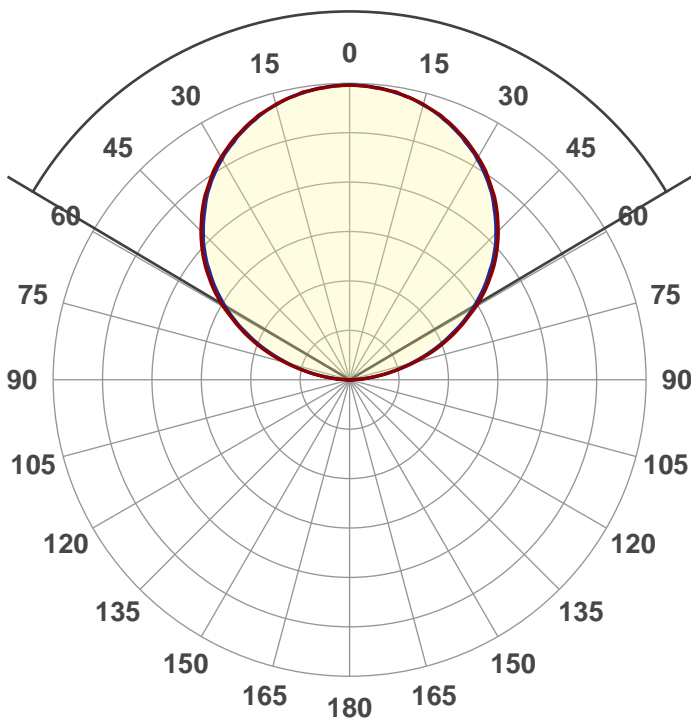
Power: 12,0 W

PF: 1,0



Beam angle

118,6°



Product name:

FLNP-L-06D0508-827

Item number:

FLNP/L/06D0508/827

Date and time:

27.03.2017 16:19:36

Description:

Rank:

X5H23Y3

Toleranzen:

Lumen +/-4%

Candela +/-2,5%

Colour Temp +/-35 Grad K

CRI +/-0,7

Angular Resolution 1 Grad step

Last Calibration 02-02-2016

Pruefer:

Mourad Benzineb

Master of Engineering

Pruefort:

Lichtlabor

Gaustrasse13-15

55411 Bingen am Rhein

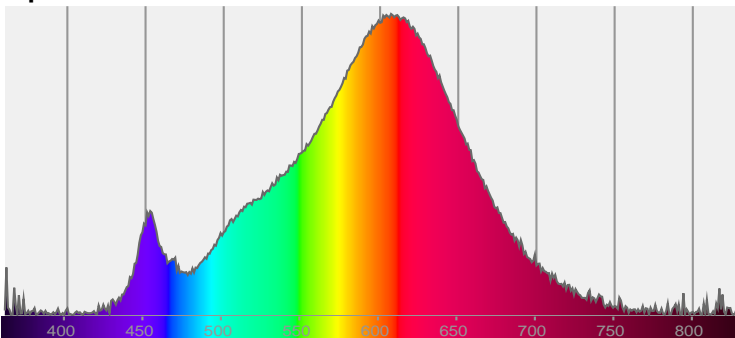


CIE 1931

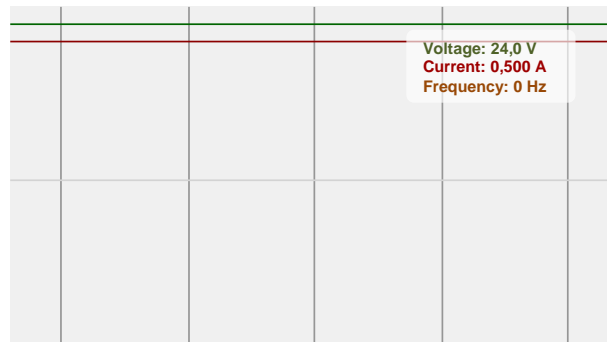
x: 0,467

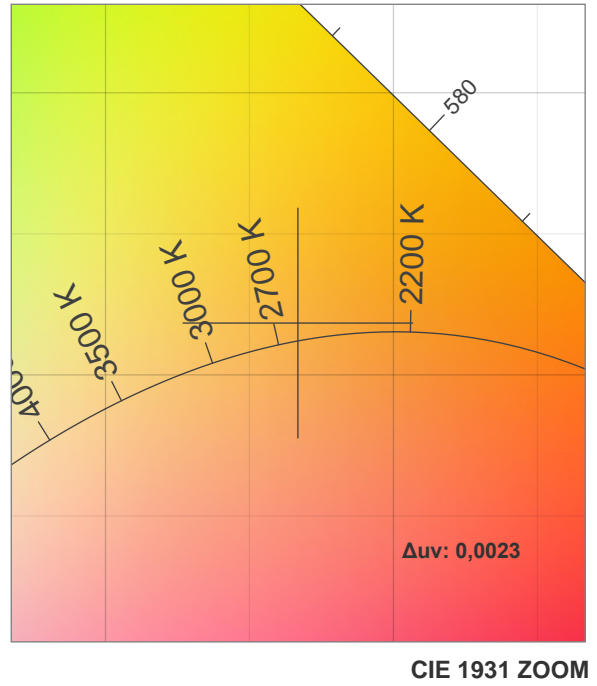
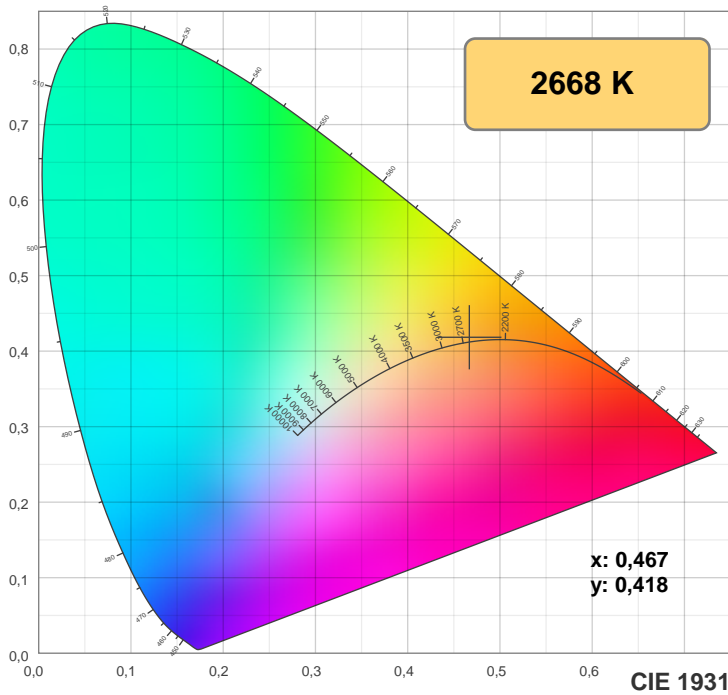
y: 0,418

Spectra



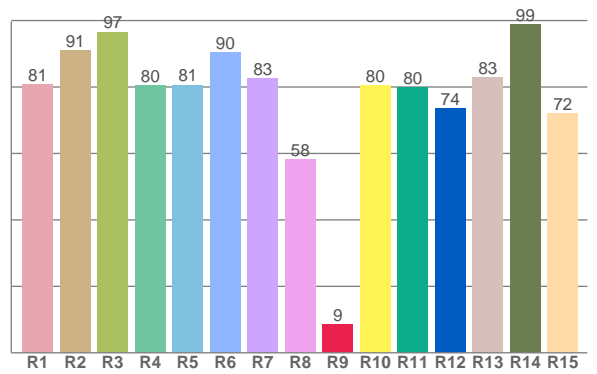
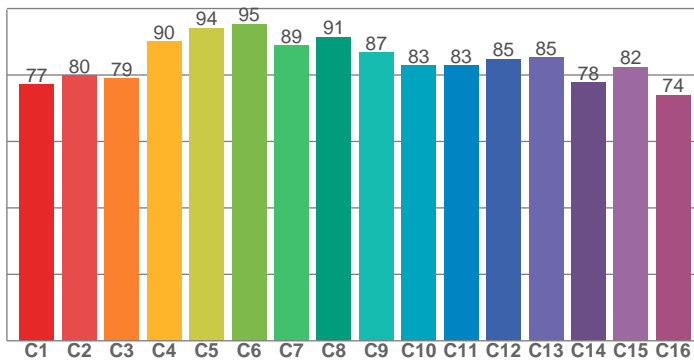
Power





TM30: 84,2

CRI: 82,6 (R1-R8)



CRI R values, only R1-R8 are used to calculate final CRI value

R1	R2	R3	R4	R5	R6	R7	R8	R9	R10	R11	R12	R13	R14	R15
80,7	91,2	96,6	80,5	80,7	90,4	82,6	58,1	8,5	80,5	79,9	73,6	83,0	98,8	72,1

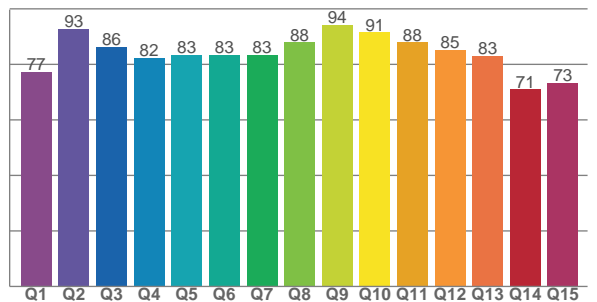
TM30 C values, 16 binned values out of total of 99 C values

C1	C2	C3	C4	C5	C6	C7	C8	C9	C10	C11	C12	C13	C14	C15	C16
77,2	79,8	78,9	90,1	94,2	95,3	88,9	91,4	86,8	82,9	82,8	84,8	85,3	77,8	82,4	74,0

CQS Q values

Q1	Q2	Q3	Q4	Q5	Q6	Q7	Q8	Q9	Q10	Q11	Q12	Q13	Q14	Q15
77,1	92,9	86,1	82,3	83,4	83,4	83,4	87,9	94,3	91,5	87,9	85,2	83,1	71,0	73,3

CQS: 82,7



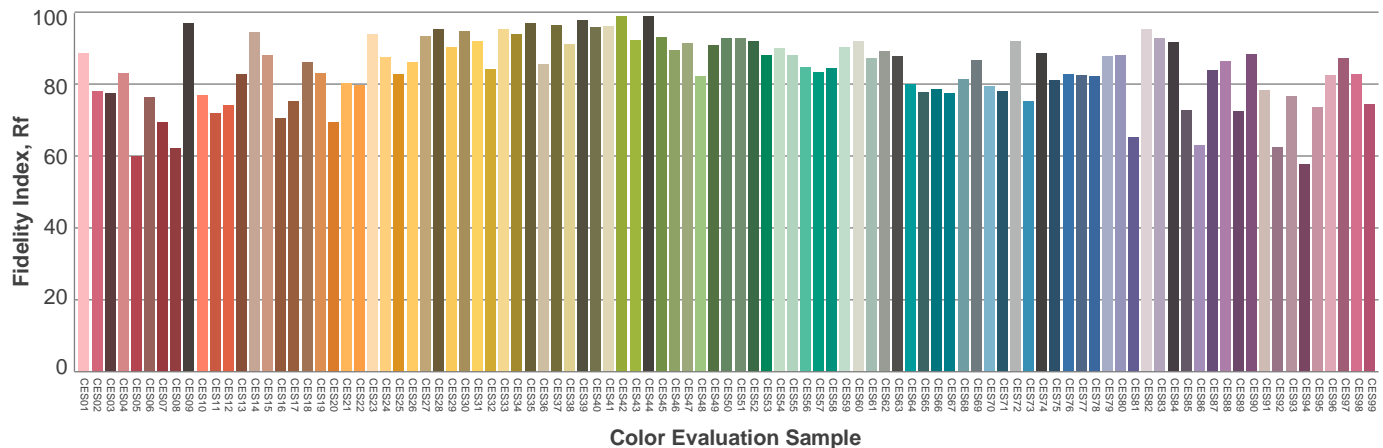
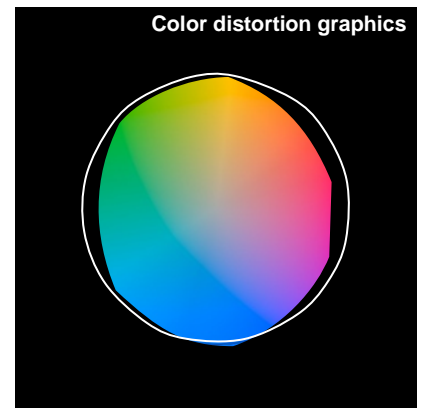
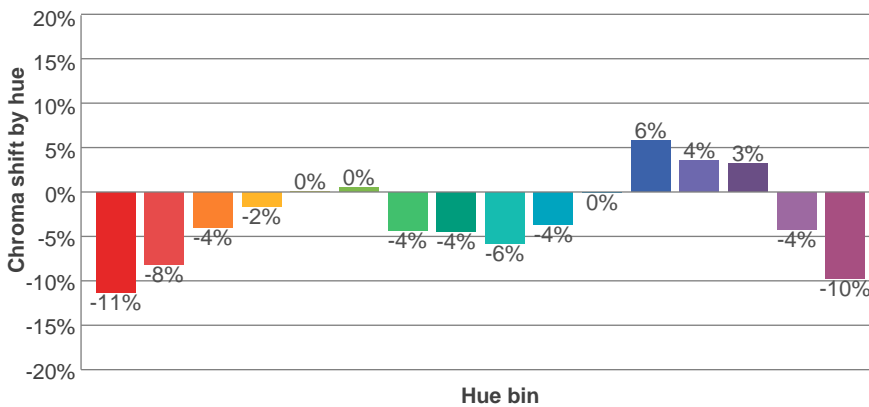
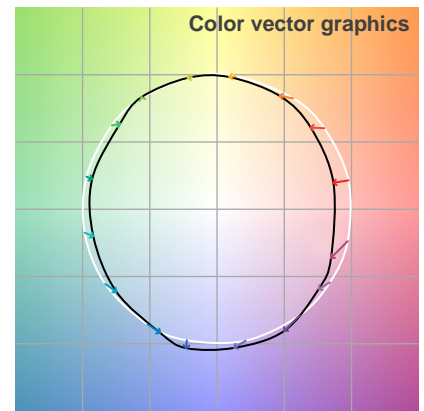
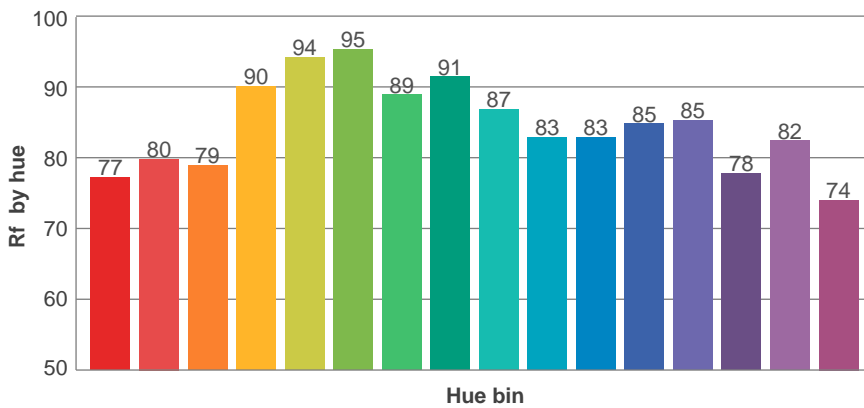
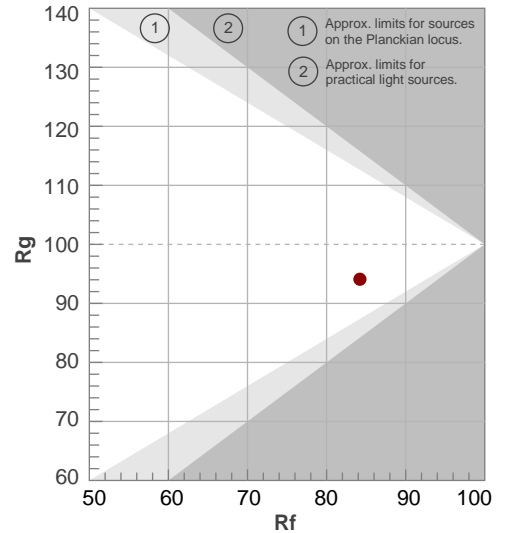
Color parameters

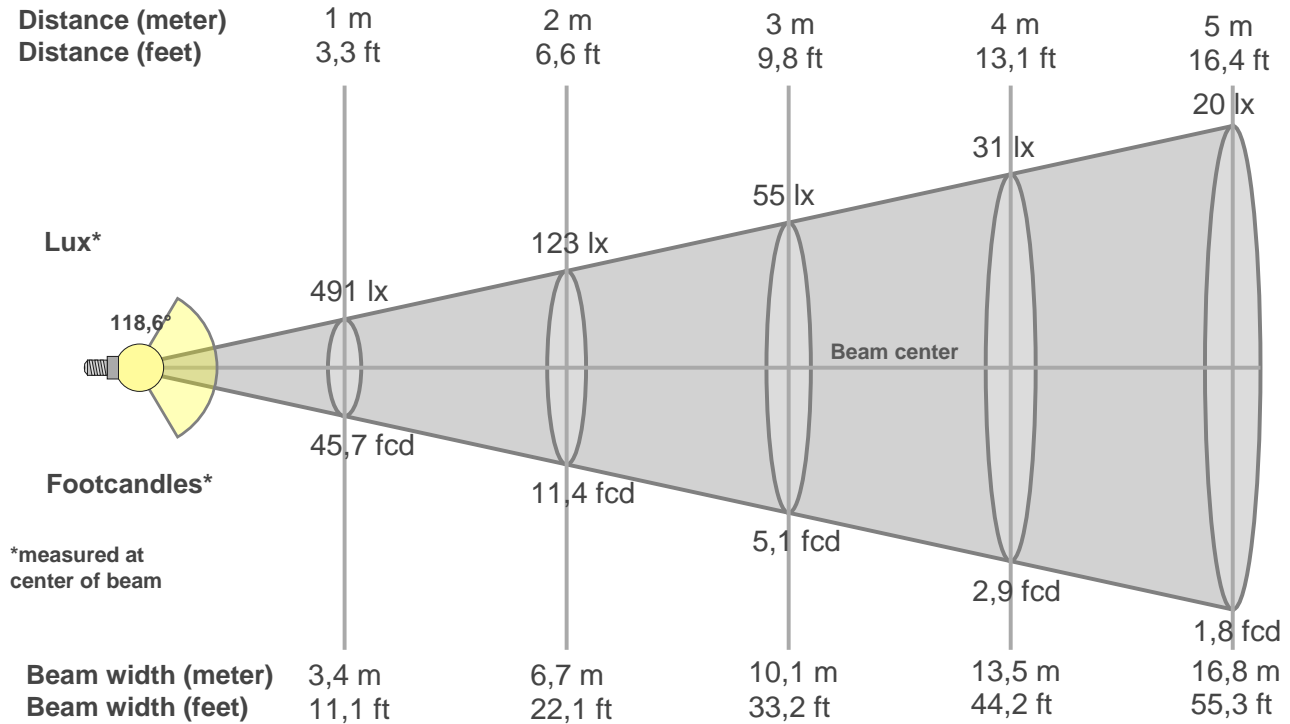
Color temperature	Color rendering index	Red component	Color fidelity	Color gamut	Color quality scale	Color coordinate cie 1931	Color coordinate cie 1931	Color coordinate	Color coordinate	Color deviation from black body
CCT	CRI	CRI R9	TM30 Rf	TM30 Rg	CQS	x	y	u	v	Δuv
2668 K	82,6	8,5	84,2	94,1	82,7	0,467	0,418	0,263	0,354	0,0023

Rf 84,2
Fidelity index Rf

Rg 94,1
Gammut index Rg

Hue Bin	R _f	Graphic shifts (%)	
		Chroma	Hue
1	77	-11%	0%
2	80	-8%	6%
3	79	-4%	9%
4	90	-2%	4%
5	94	0%	3%
6	95	0%	0%
7	89	-4%	-4%
8	91	-4%	1%
9	87	-6%	4%
10	83	-4%	9%
11	83	0%	11%
12	85	6%	1%
13	85	4%	-9%
14	78	3%	-16%
15	82	-4%	-9%
16	74	-10%	-15%




Beam intensities from 1-20m

1m	2m	3m	4m	5m	6m	7m	8m	9m	10m	11m	12m	13m	14m	15m	16m	17m	18m	19m	20m
3,3ft	6,6ft	9,8ft	13,1ft	16,4ft	19,7ft	23ft	26,2ft	29,5ft	32,8ft	36,1ft	39,4ft	42,7ft	45,9ft	49,2ft	52,5ft	55,8ft	59,1ft	62,3ft	65,6ft
491lx	123lx	55lx	31lx	20lx	14lx	10lx	8lx	6lx	5lx	4lx	3lx	3lx	3lx	2lx	2lx	2lx	2lx	1lx	1lx
45,7fcd	11,4fcd	5,1fcd	2,9fcd	1,8fcd	1,3fcd	0,9fcd	0,7fcd	0,6fcd	0,5fcd	0,4fcd	0,3fcd	0,3fcd	0,2fcd	0,2fcd	0,2fcd	0,2fcd	0,1fcd	0,1fcd	0,1fcd

Intensities in 0° c-plane

0°	5°	10°	15°	20°	25°	30°	35°	40°	45°	50°	55°	60°	65°	70°	75°	80°	85°	90°	95°
491	489	484	476	463	448	429	406	380	351	319	282	243	200	157	112	67	27	2	0
100%	99%	99%	97%	94%	91%	87%	83%	77%	71%	65%	57%	49%	41%	32%	23%	14%	6%	0%	0%

Intensities in 90° c-plane

0°	5°	10°	15°	20°	25°	30°	35°	40°	45°	50°	55°	60°	65°	70°	75°	80°	85°	90°	95°
491	489	484	474	461	445	425	403	375	345	312	276	237	194	151	107	66	27	1	0
100%	100%	98%	97%	94%	91%	87%	82%	76%	70%	64%	56%	48%	40%	31%	22%	13%	6%	0%	0%

Intensities in 180° c-plane

0°	5°	10°	15°	20°	25°	30°	35°	40°	45°	50°	55°	60°	65°	70°	75°	80°	85°	90°	95°
491	489	484	476	463	448	429	406	380	351	319	282	243	200	157	112	67	27	2	0
100%	99%	99%	97%	94%	91%	87%	83%	77%	71%	65%	57%	49%	41%	32%	23%	14%	6%	0%	0%

Intensities in 270° c-plane

0°	5°	10°	15°	20°	25°	30°	35°	40°	45°	50°	55°	60°	65°	70°	75°	80°	85°	90°	95°
491	489	484	474	461	445	425	403	375	345	312	276	237	194	151	107	66	27	1	0
100%	100%	98%	97%	94%	91%	87%	82%	76%	70%	64%	56%	48%	40%	31%	22%	13%	6%	0%	0%

Beam angle 50%	Field angle 10%	Cutoff angle 2,5%	Intensity ratio in 120° cone	Intensity ratio in 90° cone
118,6°	164,2°	174,4°	0,8%	0,5%

Glare Evaluation According to UGR

p Ceiling		70	70	50	50	30	70	70	50	50	30
p Walls		50	30	50	30	30	50	30	50	30	30
p Floor		20	20	20	20	20	20	20	20	20	20
Room size X Y		Viewing direction at right angles to lamp axis					Viewing direction parallel to lamp axis				
2H	2H	25,9	27,3	26,2	27,5	27,8	25,8	27,2	26,1	27,4	27,7
	3H	27,6	28,9	28,0	29,1	29,4	27,5	28,7	27,8	29,0	29,3
	4H	28,3	29,5	28,7	29,8	30,0	28,2	29,3	28,5	29,6	29,9
	6H	28,8	29,9	29,2	30,2	30,5	28,7	29,7	29,0	30,0	30,4
	8H	29,0	30,0	29,3	30,3	30,6	28,8	29,9	29,2	30,2	30,5
	12H	29,1	30,0	29,4	30,4	30,7	28,9	29,9	29,3	30,2	30,6
4H	2H	26,7	27,8	27,0	28,1	28,4	26,6	27,7	26,9	28,0	28,3
	3H	28,5	29,5	28,9	29,9	30,2	28,4	29,4	28,8	29,7	30,1
	4H	29,4	30,2	29,8	30,6	31,0	29,2	30,1	29,6	30,4	30,8
	6H	30,0	30,7	30,4	31,1	31,5	29,8	30,6	30,3	31,0	31,4
	8H	30,2	30,9	30,6	31,3	31,7	30,1	30,8	30,5	31,2	31,6
	12H	30,3	31,0	30,8	31,4	31,8	30,2	30,9	30,7	31,3	31,7
8H	4H	29,7	30,4	30,1	30,8	31,2	29,6	30,3	30,0	30,7	31,1
	6H	30,4	31,0	30,9	31,4	31,9	30,3	30,9	30,8	31,3	31,8
	8H	30,7	31,2	31,2	31,7	32,2	30,6	31,1	31,1	31,6	32,1
	12H	30,9	31,4	31,4	31,8	32,3	30,8	31,3	31,3	31,8	32,3
12H	4H	29,7	30,3	30,1	30,8	31,2	29,6	30,2	30,0	30,6	31,1
	6H	30,5	31,0	31,0	31,5	31,9	30,4	30,9	30,9	31,4	31,8
	8H	30,8	31,3	31,3	31,7	32,2	30,7	31,2	31,2	31,6	32,1
Variation of the observer position for the luminaire distance S											
S = 1,0H		+0,1 / -0,1					+0,1 / -0,1				
S = 1,5H		+0,2 / -0,3					+0,2 / -0,3				
S = 2,0H		+0,3 / -0,6					+0,3 / -0,6				
Standard table		BK06					BK06				
Correction summand		13,5					13,4				
Corrected glare indices referring to 1500lm total luminous flux											