

Light efficiency:

104 Lumen/Watt

Light quality:

CRI: 92,9

Color temperature:

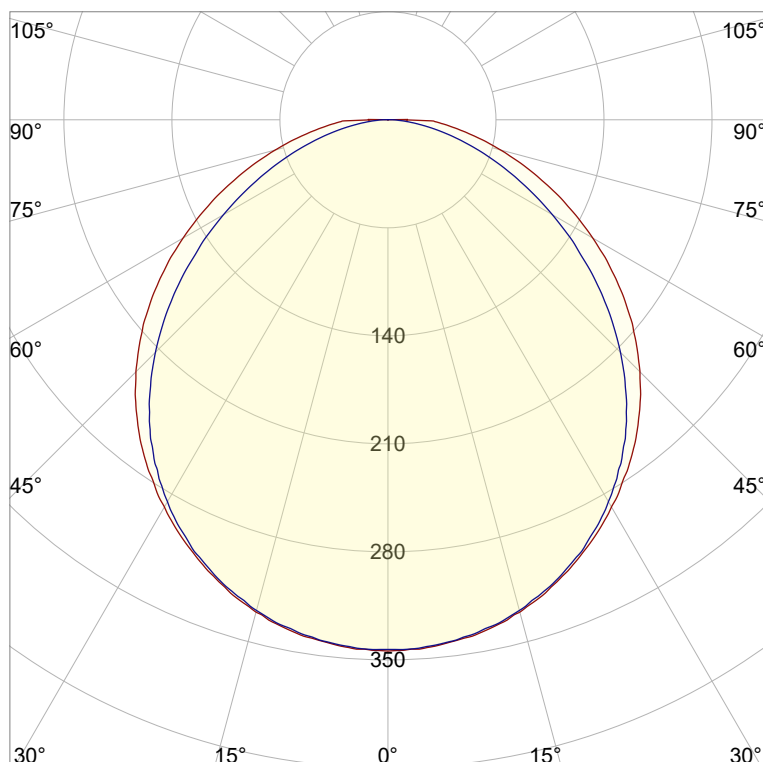
2736 K

Output: 1003 lm

Peak: 344 cd

Power: 9,6 W

PF: 1,0



CIE 1931  
x: 0,458  
y: 0,412

Product name:

**Pegasus-5\_0510\_927\_Cover-Round-Frosted**

Item number:

**NP/L2C/09E/0510/927/CRF**

Date and time:

**02.04.2025 12:29:05**

Description:

**Tolerances:**

**Lumen +/-4%**

**Candela +/-2,5%**

**Colour Temp +/-35 Kelvin**

**CRI +/-0,7**

**Angular Resolution: 1 Degree Step**

**Last Calibration 13.10.2023**

**Tester:**

**Peter Ulrich**

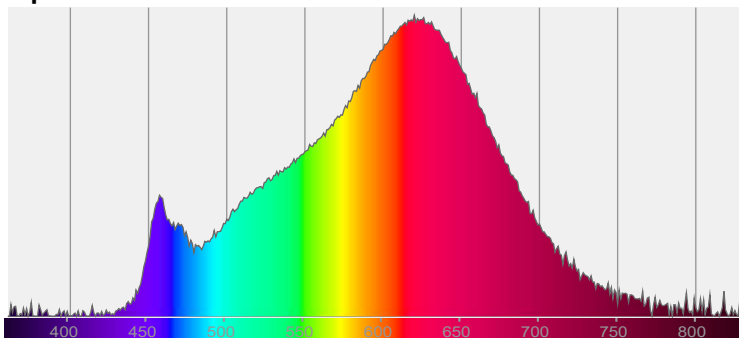
**Test Site:**

**Lichtlabor**

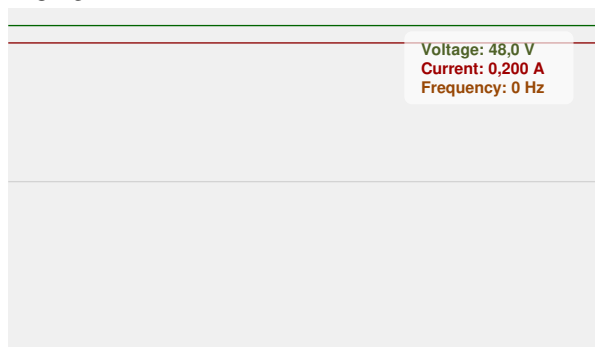
**Gaustrasse 13**

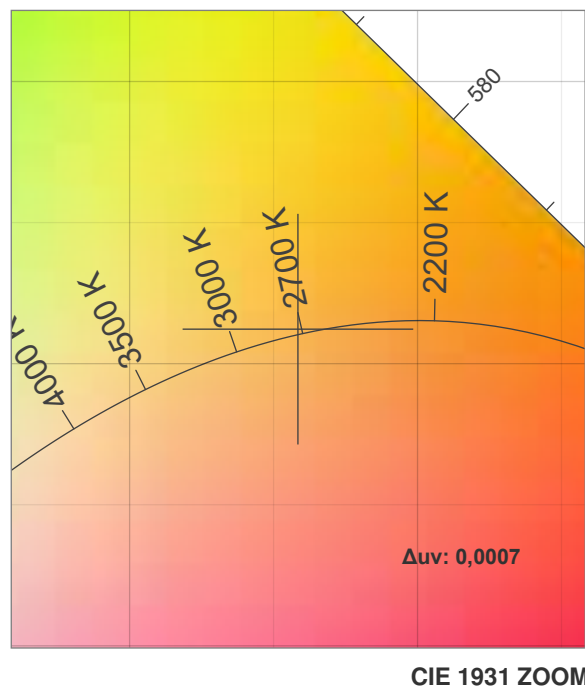
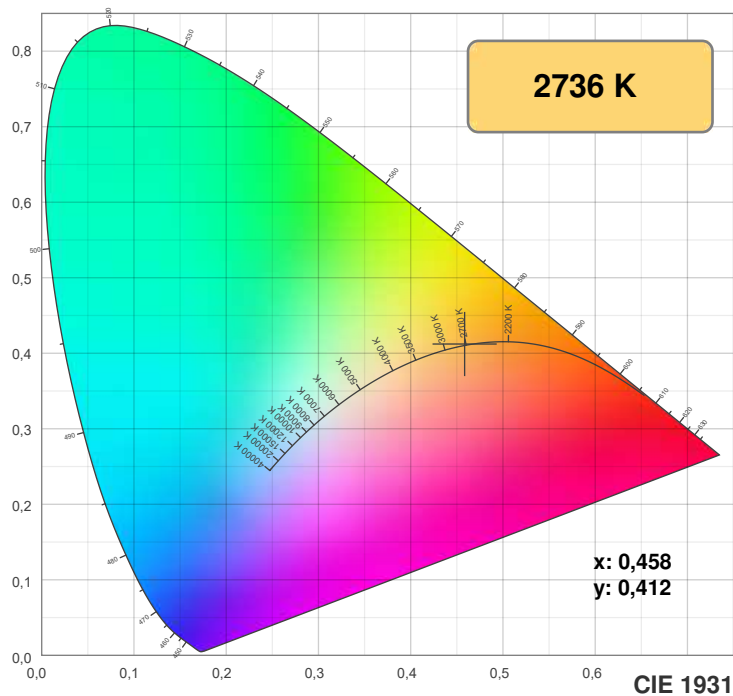
**55411 Bingen am Rhein**

Spectra



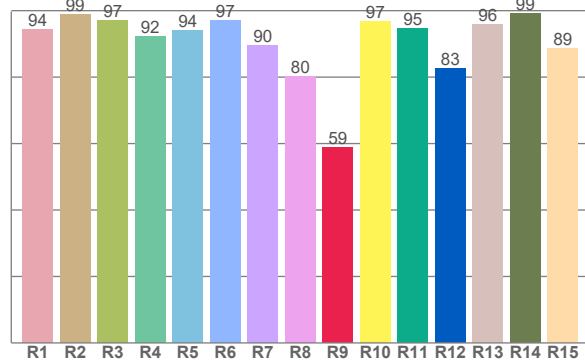
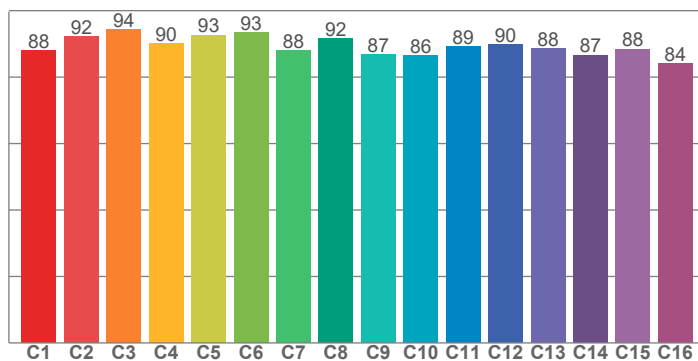
Power





**TM30: 89,4**

**CRI: 92,9 (R1-R8)**



**CRI R values, only R1-R8 are used to calculate final CRI value**

R1	R2	R3	R4	R5	R6	R7	R8	R9	R10	R11	R12	R13	R14	R15
94,2	98,9	97,0	92,4	94,0	97,0	89,7	80,1	58,7	96,7	94,6	82,7	95,8	99,2	88,7

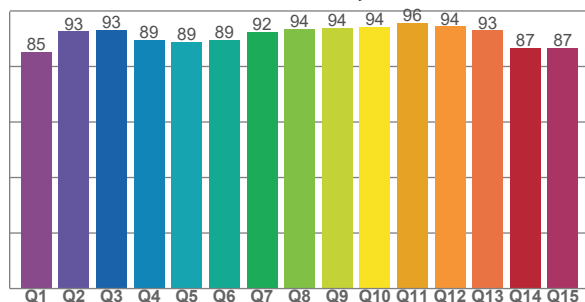
**TM30 C values, 16 binned values out of total of 99 C values**

C1	C2	C3	C4	C5	C6	C7	C8	C9	C10	C11	C12	C13	C14	C15	C16
88,1	92,3	94,4	90,1	92,7	93,4	87,9	91,7	86,8	86,4	89,3	89,9	88,5	86,7	88,4	84,0

**CQS Q values**

Q1	Q2	Q3	Q4	Q5	Q6	Q7	Q8	Q9	Q10	Q11	Q12	Q13	Q14	Q15
85,3	92,6	93,1	89,5	88,8	89,5	92,4	93,6	93,8	94,2	95,5	94,4	93,0	86,7	86,7

**CQS: 90,6**



## Color parameters

Color temperature	Color rendering index	Red component	Color fidelity	Color gamut	Color quality scale	Color coordinate cie 1931	Color coordinate cie 1931	Color coordinate	Color coordinate	Color deviation from black body
CCT	CRI	CRI R9	TM30 Rf	TM30 Rg	CQS	x	y	u	v	Δuv
2736 K	92,9	58,7	89,4	95,3	90,6	0,458	0,412	0,261	0,352	0,0007

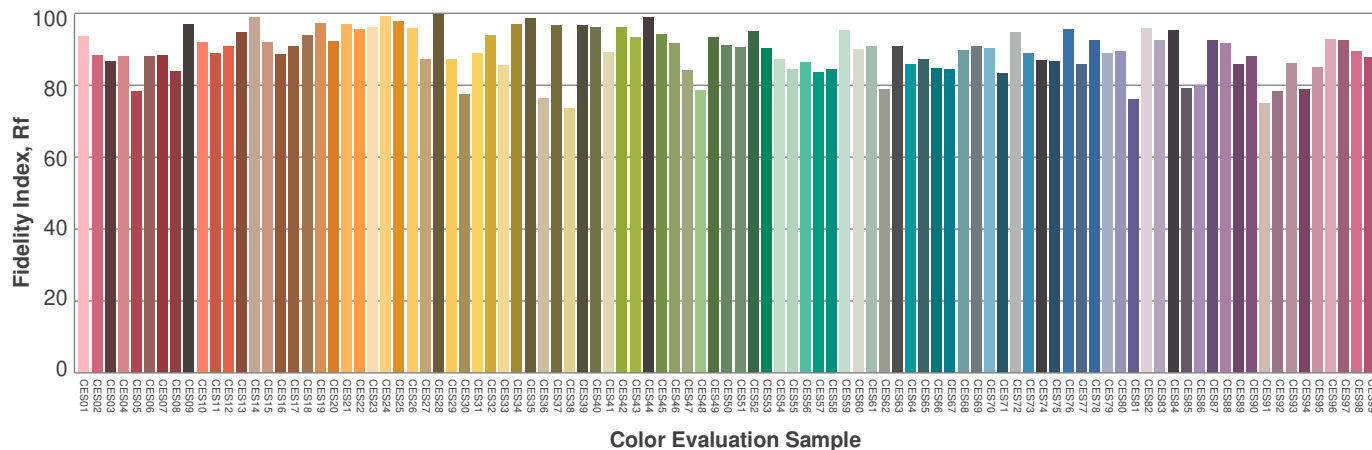
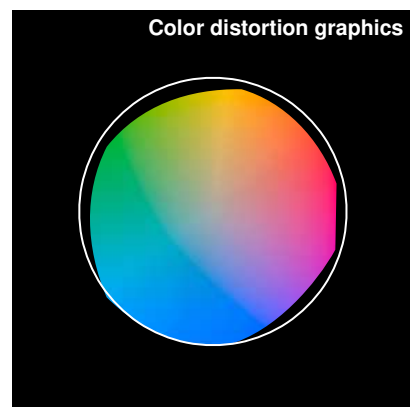
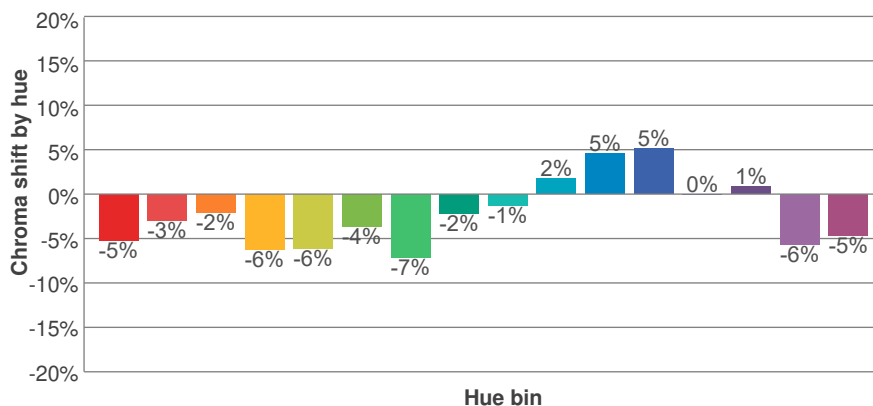
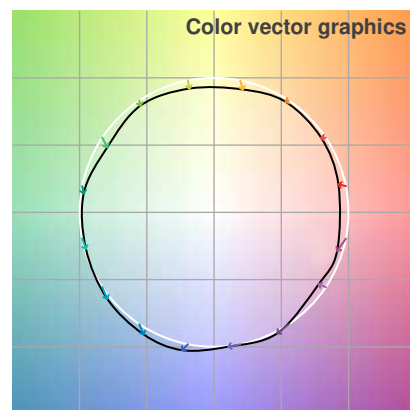
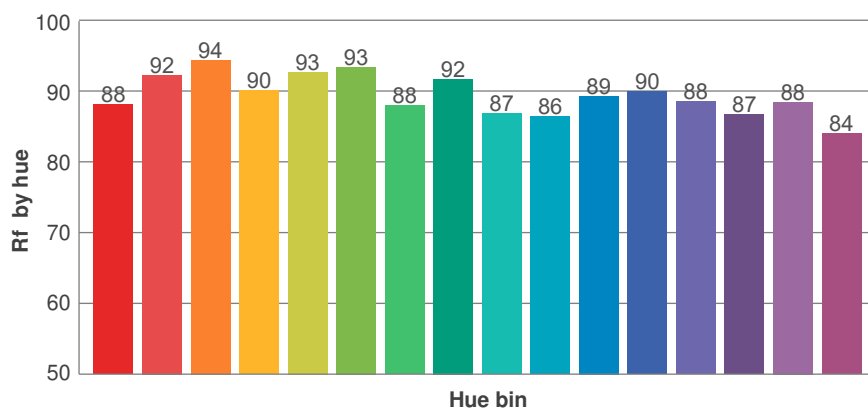
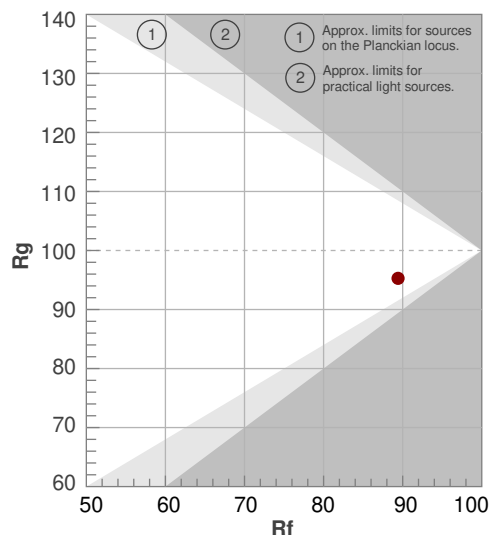
**Rf 89,4**

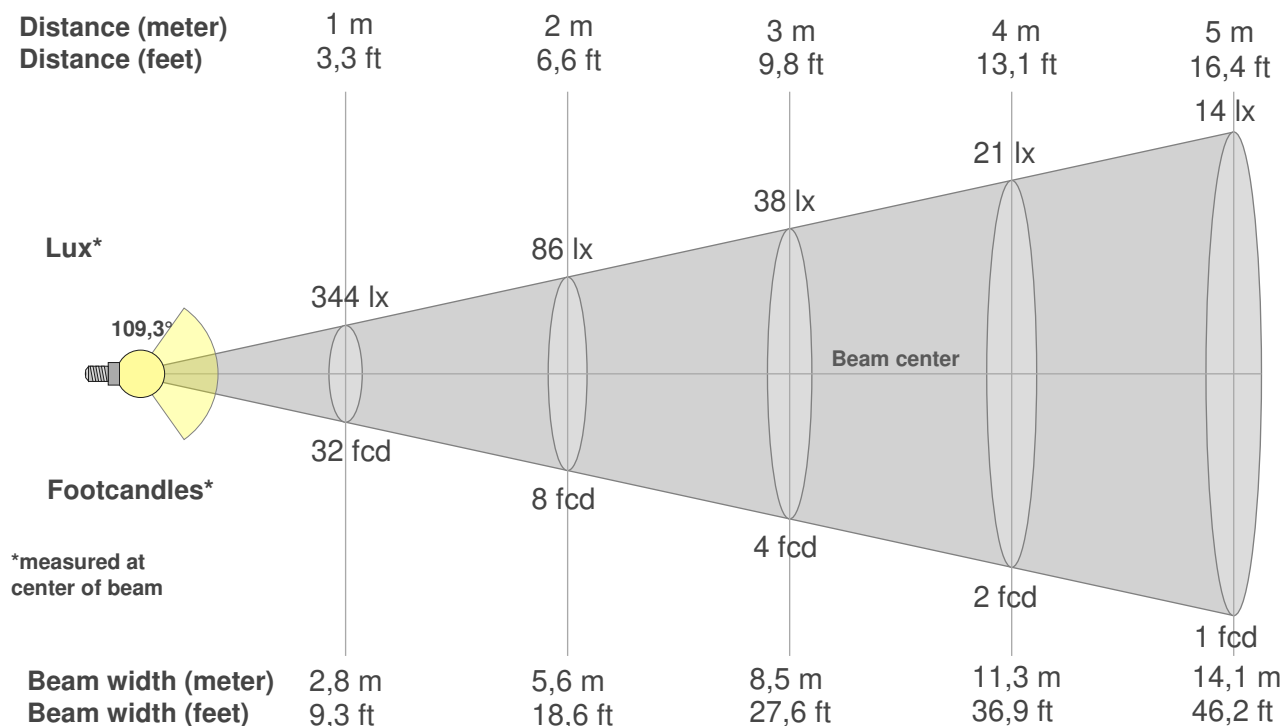
Fidelity index Rf

**Rg 95,3**

Gamut index Rg

Hue Bin	R <sub>f</sub>	Graphic shifts (%)	
		Chroma	Hue
1	88	-5%	2%
2	92	-3%	2%
3	94	-2%	1%
4	90	-6%	-3%
5	93	-6%	0%
6	93	-4%	1%
7	88	-7%	4%
8	92	-2%	5%
9	87	-1%	8%
10	86	2%	9%
11	89	5%	7%
12	90	5%	-3%
13	88	0%	-9%
14	87	1%	-11%
15	88	-6%	-1%
16	84	-5%	-10%





## Beam intensities from 1-20m

1m	2m	3m	4m	5m	6m	7m	8m	9m	10m	11m	12m	13m	14m	15m	16m	17m	18m	19m	20m
3,3ft	6,6ft	9,8ft	13,1ft	16,4ft	19,7ft	23ft	26,2ft	29,5ft	32,8ft	36,1ft	39,4ft	42,7ft	45,9ft	49,2ft	52,5ft	55,8ft	59,1ft	62,3ft	65,6ft
344lx	86lx	38lx	21lx	14lx	10lx	7lx	5lx	4lx	3lx	3lx	2lx	2lx	2lx	2lx	1lx	1lx	1lx	1lx	1lx
31,9fcd	8fcd	3,5fcd	2fcd	1,3fcd	0,9fcd	0,7fcd	0,5fcd	0,4fcd	0,3fcd	0,3fcd	0,2fcd	0,2fcd	0,2fcd	0,1fcd	0,1fcd	0,1fcd	0,1fcd	0,1fcd	0,1fcd

## Intensities in 0° c-plane

0°	5°	10°	15°	20°	25°	30°	35°	40°	45°	50°	55°	60°	65°	70°	75°	80°	85°	90°	95°
344	343	338	330	319	305	290	273	253	231	207	181	153	126	100	75	54	38	13	0
100%	100%	98%	96%	93%	89%	84%	79%	73%	67%	60%	53%	45%	37%	29%	22%	16%	11%	4%	0%

## Intensities in 90° c-plane

0°	5°	10°	15°	20°	25°	30°	35°	40°	45°	50°	55°	60°	65°	70°	75°	80°	85°	90°	95°
344	342	337	329	318	304	286	265	241	213	183	153	123	94	69	46	26	11	1	1
100%	99%	98%	96%	92%	88%	83%	77%	70%	62%	53%	44%	36%	27%	20%	13%	8%	3%	0%	0%

## Intensities in 180° c-plane

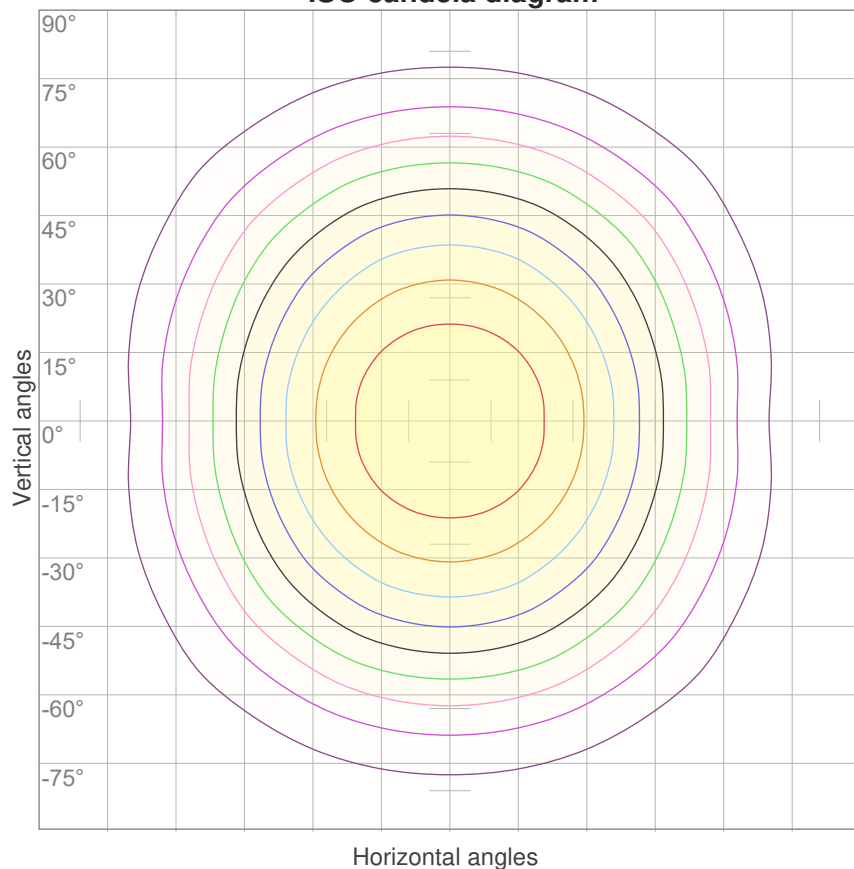
0°	5°	10°	15°	20°	25°	30°	35°	40°	45°	50°	55°	60°	65°	70°	75°	80°	85°	90°	95°
344	343	338	330	319	305	290	273	253	231	207	181	153	126	100	75	54	38	13	0
100%	100%	98%	96%	93%	89%	84%	79%	73%	67%	60%	53%	45%	37%	29%	22%	16%	11%	4%	0%

## Intensities in 270° c-plane

0°	5°	10°	15°	20°	25°	30°	35°	40°	45°	50°	55°	60°	65°	70°	75°	80°	85°	90°	95°
344	342	337	329	318	304	286	265	241	213	183	153	123	94	69	46	26	11	1	1
100%	99%	98%	96%	92%	88%	83%	77%	70%	62%	53%	44%	36%	27%	20%	13%	8%	3%	0%	0%

Beam angle 50%	Field angle 10%	Cutoff angle 2,5%	Intensity ratio in 120° cone	Intensity ratio in 90° cone
109,3°	167,1°	212,9°	75,4%	51,7%

### ISO candela diagram



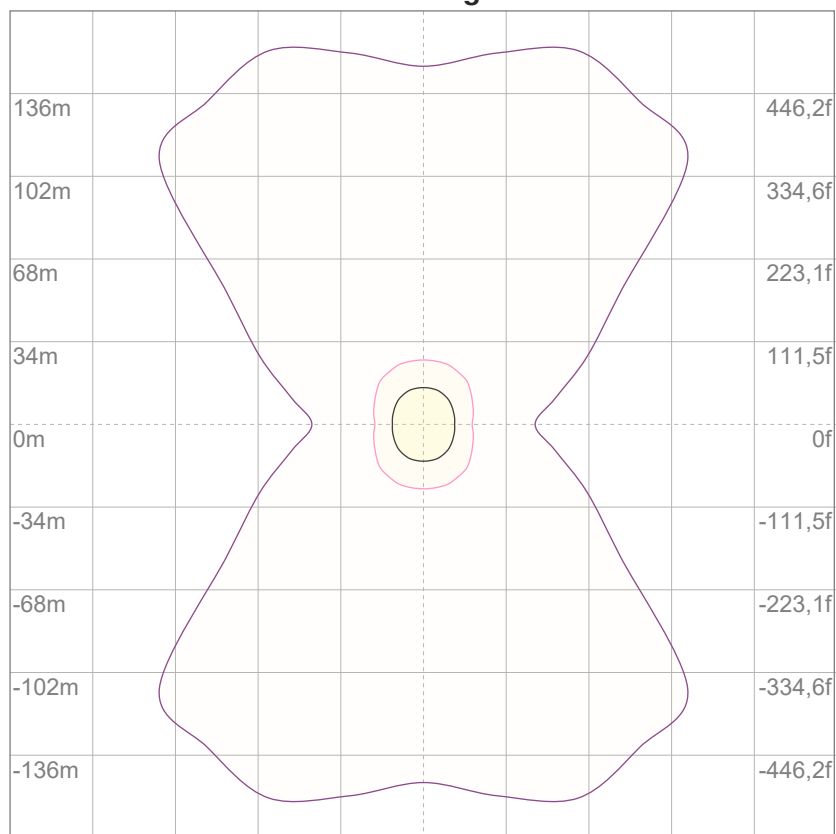
10%	34 cd
20%	69 cd
30%	103 cd
40%	138 cd
50%	172 cd
60%	206 cd
70%	241 cd
80%	275 cd
90%	310 cd

#### Conditions:

Number of c-planes: 16

Candela at center: 344 cd

### ISO lux diagram



3%	0,103 lx
5%	0,172 lx
10%	0,344 lx
30%	1,03 lx
50%	1,72 lx

#### Conditions:

Number of c-planes: 16

Lux at center: 3,44 lx

*Lux distribution on a surface  
when lamp is mounted at 10  
meters from the surface.*

### Glare Evaluation According to UGR

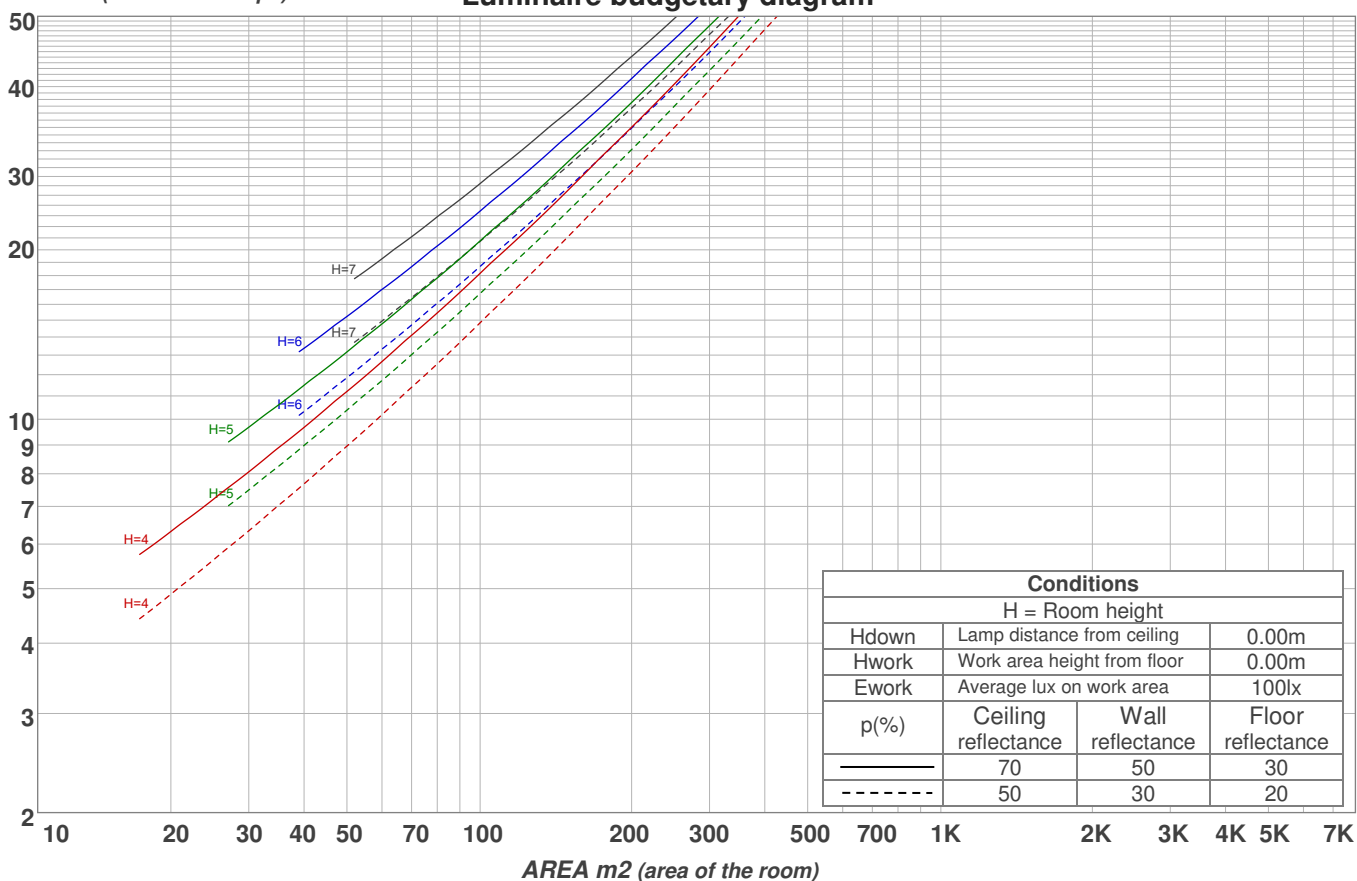
p Ceiling		70	70	50	50	30	70	70	50	50	30
p Walls		50	30	50	30	30	50	30	50	30	30
p Floor		20	20	20	20	20	20	20	20	20	20
Room size X      Y		Viewing direction at right angles to lamp axis					Viewing direction parallel to lamp axis				
2H	2H	25,8	27,0	26,0	27,3	27,6	25,7	27,0	26,0	27,3	27,5
	3H	27,1	28,4	27,5	28,7	28,9	26,9	28,2	27,3	28,5	28,7
	4H	27,7	28,9	28,1	29,2	29,4	27,4	28,6	27,8	28,9	29,1
	6H	28,2	29,3	28,5	29,5	29,9	27,8	28,9	28,1	29,1	29,5
	8H	28,4	29,4	28,7	29,7	30,1	27,9	28,9	28,2	29,2	29,6
	12H	28,5	29,5	28,9	29,8	30,3	27,9	28,9	28,3	29,3	29,7
4H	2H	26,3	27,6	26,7	27,8	28,1	26,3	27,5	26,7	27,8	28,0
	3H	28,0	29,0	28,3	29,3	29,8	27,8	28,8	28,1	29,1	29,6
	4H	28,6	29,5	29,0	29,9	30,5	28,3	29,3	28,8	29,7	30,2
	6H	29,2	30,1	29,7	30,4	30,8	28,8	29,7	29,3	30,0	30,4
	8H	29,4	30,2	29,9	30,6	31,0	28,9	29,8	29,5	30,1	30,5
	12H	29,6	30,3	30,1	30,7	31,2	29,1	29,7	29,6	30,2	30,7
8H	4H	28,9	29,7	29,4	30,1	30,5	28,6	29,5	29,1	29,8	30,2
	6H	29,7	30,3	30,2	30,8	31,3	29,3	29,9	29,8	30,4	30,9
	8H	30,0	30,6	30,5	31,1	31,7	29,6	30,1	30,1	30,7	31,3
	12H	30,3	30,8	30,9	31,3	31,9	29,8	30,3	30,4	30,8	31,4
12H	4H	28,9	29,6	29,4	30,0	30,5	28,7	29,3	29,1	29,8	30,3
	6H	29,8	30,3	30,3	30,8	31,5	29,4	30,0	29,9	30,5	31,1
	8H	30,1	30,6	30,7	31,1	31,7	29,7	30,2	30,3	30,7	31,3
Variation of the observer position for the luminaire distance S											
S = 1.0H		0,1 / -0,1					0,1 / -0,1				
S = 1.5H		0,1 / -0,2					0,2 / -0,3				
S = 2.0H		0,4 / -0,5					0,5 / -0,6				
Standard table		n/a					n/a				
Correction summand		n/a					n/a				
Corrected glare indices referring to 1003 lm total luminous flux											

## Coefficients of Utilization

Ceiling reflectance	80				70				50			30			10			0
Wall reflectance	70	50	30	10	70	50	30	10	50	30	10	50	30	10	50	30	10	0
Floor reflectance	20	20	20	20	20	20	20	20	20	20	20	20	20	20	20	20	20	0
RCR	(RCR: Room Cavity Ratio) Room Values are expressed as percentage of Lumens delivered to the task surface																	
0	118	118	118	118	115	115	115	115	110	110	110	105	105	105	100	100	100	98
1	108	102	98	94	105	100	96	92	95	92	89	91	88	86	87	85	83	80
2	98	89	82	76	95	87	81	75	83	78	73	79	75	71	76	72	69	67
3	89	78	70	63	86	76	69	62	73	66	61	70	64	60	67	62	58	56
4	81	69	60	53	79	68	59	53	65	58	52	62	56	51	60	54	50	48
5	75	62	53	46	73	61	52	46	58	51	45	56	49	44	54	48	43	41
6	69	56	47	40	67	55	46	40	53	45	39	51	44	39	49	43	38	36
7	64	50	42	35	62	50	41	35	48	40	35	46	39	34	45	39	34	32
8	60	46	37	32	58	45	37	31	44	36	31	42	36	31	41	35	30	28
9	56	42	34	28	54	42	34	28	40	33	28	39	32	28	38	32	27	26
10	52	39	31	26	51	38	31	26	37	30	25	36	30	25	35	29	25	23

LAMPS (number of lamps)

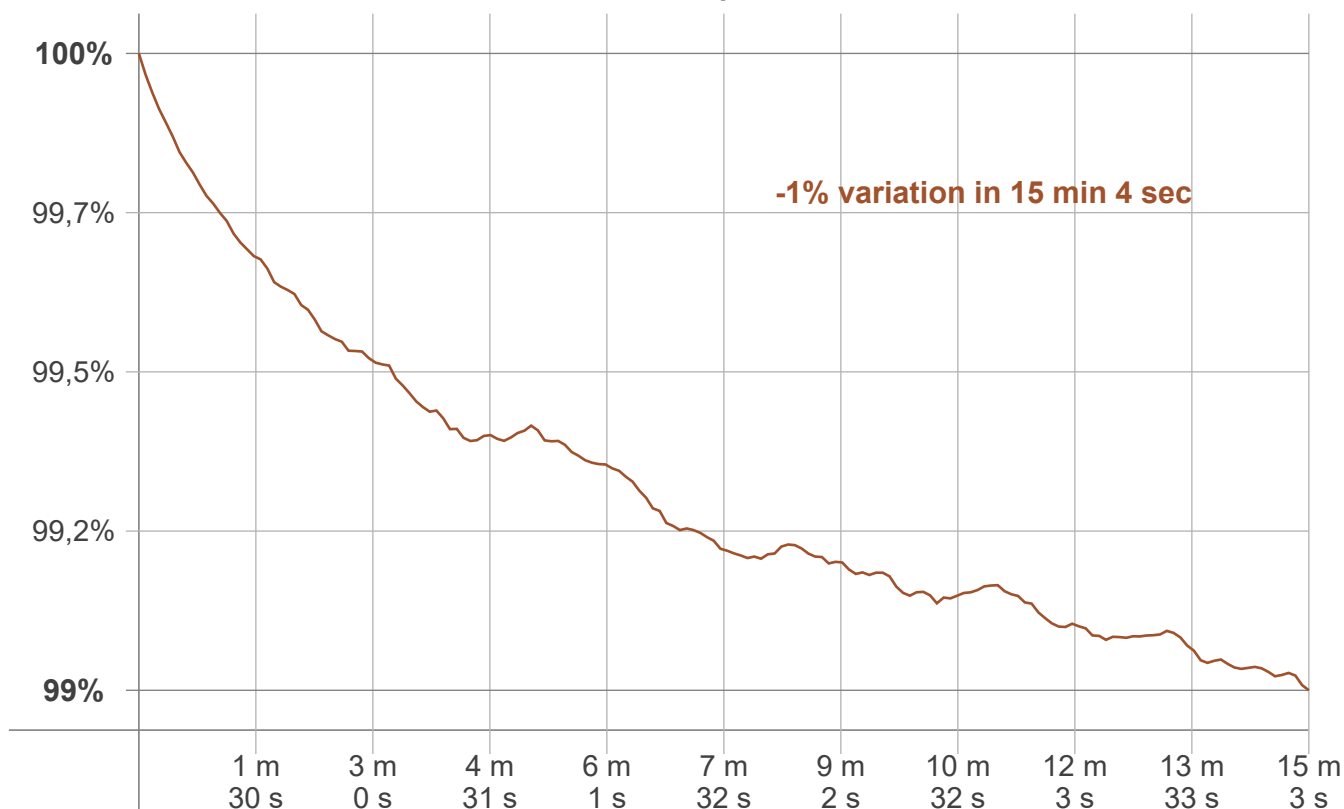
## Luminaire budgetary diagram



## Zonal Lumen Summary

0°-10°	10°-20°	20°-30°	30°-40°	40°-50°	50°-60°	60°-70°	70°-80°	80°-90°
31,3 lm	92,0 lm	140 lm	168 lm	173 lm	153 lm	115 lm	72,0 lm	35,2 lm
90°-100°	100°-110°	110°-120°	120°-130°	130°-140°	140°-150°	150°-160°	160°-170°	170°-180°
6,19 lm	5,56 lm	1,65 lm	1,49 lm	1,22 lm	0,929 lm	0,685 lm	0,419 lm	5,70 lm

## Warmup curve



## Warmup result

Warmup time:	Lamp stabilized in 15 min 4 sec
Warmup variation	-1,0%

## Warmup conditions

Stable period:	15 min
Stable change max:	2,0%
Minimum time:	15 min

## Color temperature change

CCT start	CCT change	CCT end
2737 K	-1 K	2736 K

## Output change

Output start	Output change	Output end
1012 lm	-9 lm	1003 lm