

Light efficiency:

124 Lumen/Watt

Light quality:

CRI: 93,1

Color temperature:

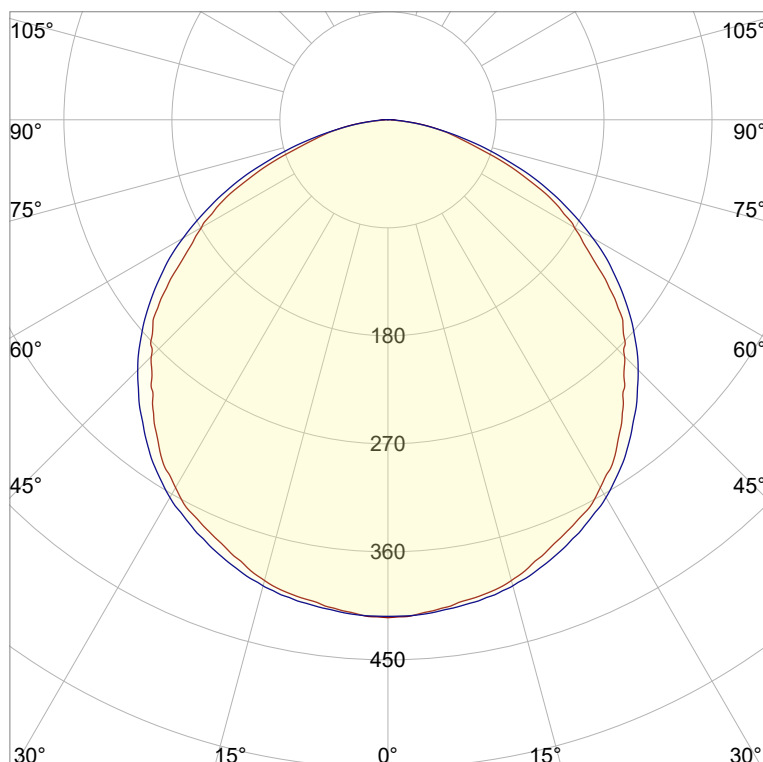
6774 K

Output: 1193 lm

Peak: 415 cd

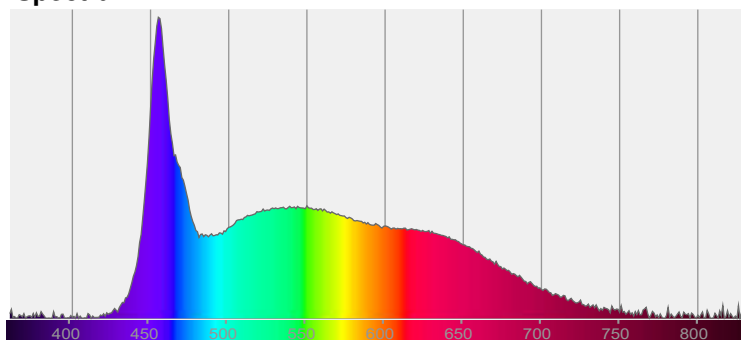
Power: 9,6 W

PF: 1,0



CIE 1931  
x: 0,309  
y: 0,325

Spectra



Power

Voltage: 48,0 V  
Current: 0,200 A  
Frequency: 0 Hz

Product name:

**Pegasus-5\_0510\_965\_Cover-Round-Transparent**

Item number:

**FL/L2C/09E/0510/965/CRT**

Date and time:

**02.04.2025 11:16:35**

Description:

**Tolerances:**

**Lumen +/-4%**

**Candela +/-2,5%**

**Colour Temp +/-35 Kelvin**

**CRI +/-0,7**

**Angular Resolution: 1 Degree Step**

**Last Calibration 13.10.2023**

**Tester:**

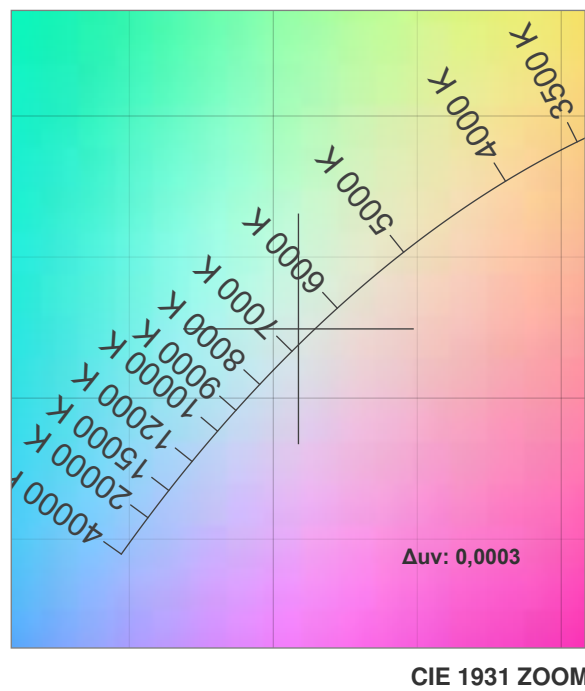
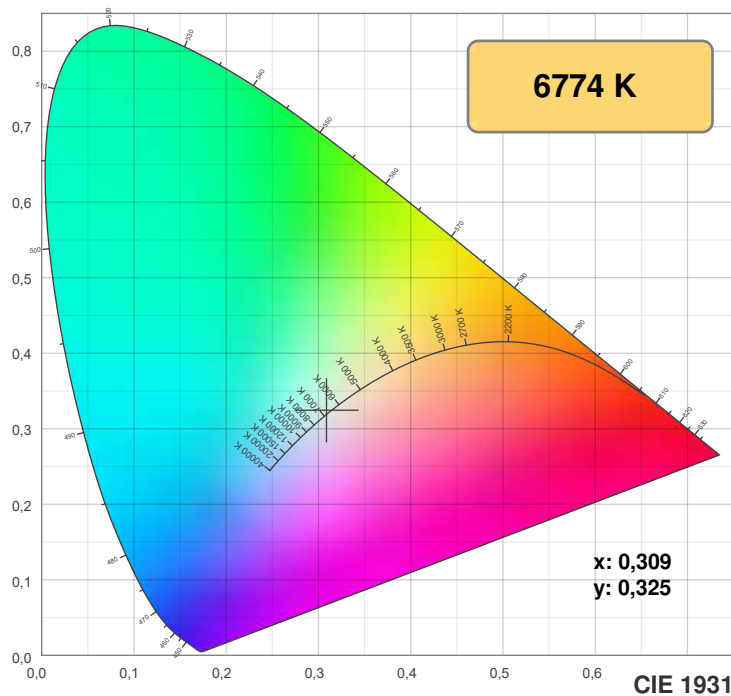
**Peter Ulrich**

**Test Site:**

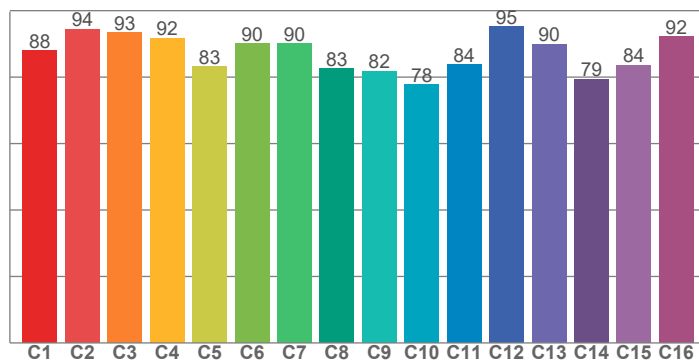
**Lichtlabor**

**Gaustrasse 13**

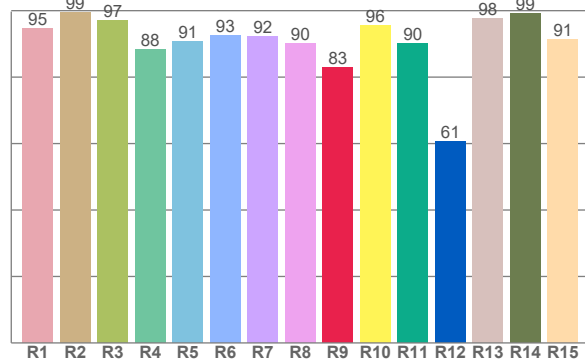
**55411 Bingen am Rhein**



**TM30: 87,2**



**CRI: 93,1 (R1-R8)**



**CRI R values, only R1-R8 are used to calculate final CRI value**

R1	R2	R3	R4	R5	R6	R7	R8	R9	R10	R11	R12	R13	R14	R15
94,8	99,4	97,1	88,3	90,7	92,6	92,1	90,1	82,9	95,5	90,2	60,8	97,8	99,1	91,5

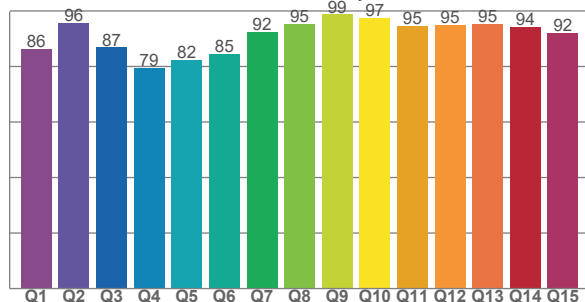
**TM30 C values, 16 binned values out of total of 99 C values**

C1	C2	C3	C4	C5	C6	C7	C8	C9	C10	C11	C12	C13	C14	C15	C16
88,0	94,5	93,4	91,7	83,3	90,1	90,1	82,7	81,8	77,8	83,8	95,1	90,0	79,4	83,6	92,2

**CQS Q values**

Q1	Q2	Q3	Q4	Q5	Q6	Q7	Q8	Q9	Q10	Q11	Q12	Q13	Q14	Q15
86,2	95,7	86,8	79,4	82,3	84,6	92,4	95,2	98,8	97,3	94,5	94,9	95,4	94,2	92,2

**CQS: 89,6**



## Color parameters

Color temperature	Color rendering index	Red component	Color fidelity	Color gamut	Color quality scale	Color coordinate cie 1931	Color coordinate cie 1931	Color coordinate	Color coordinate	Color deviation from black body
CCT	CRI	CRI R9	TM30 Rf	TM30 Rg	CQS	x	y	u	v	Δuv
6774 K	93,1	82,9	87,2	95,7	89,6	0,309	0,325	0,197	0,310	0,0003

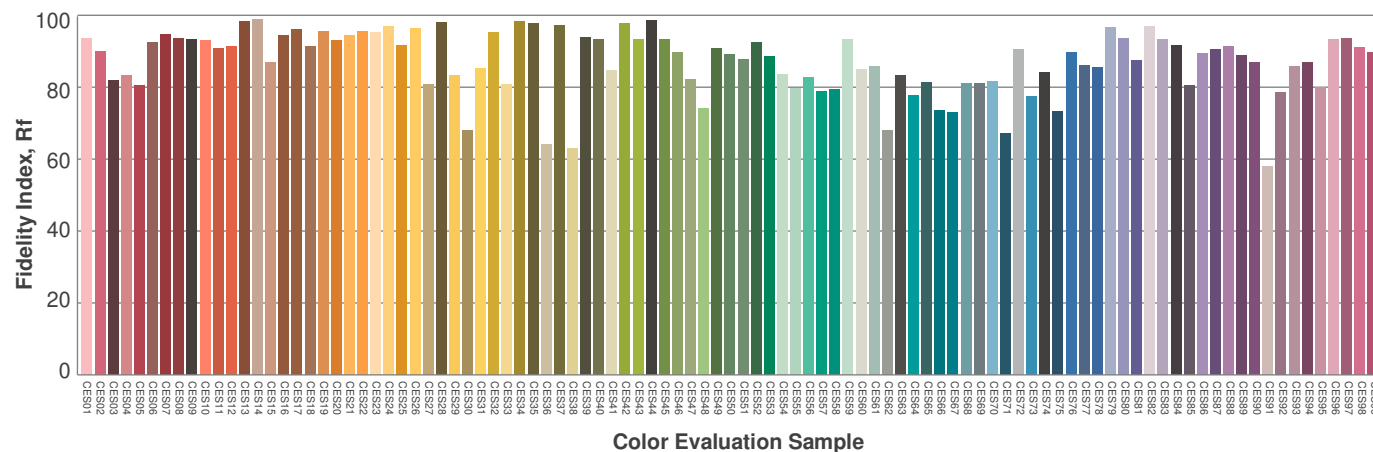
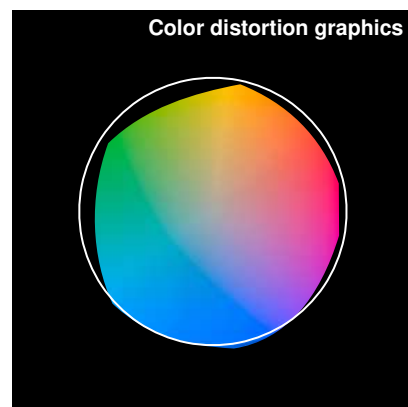
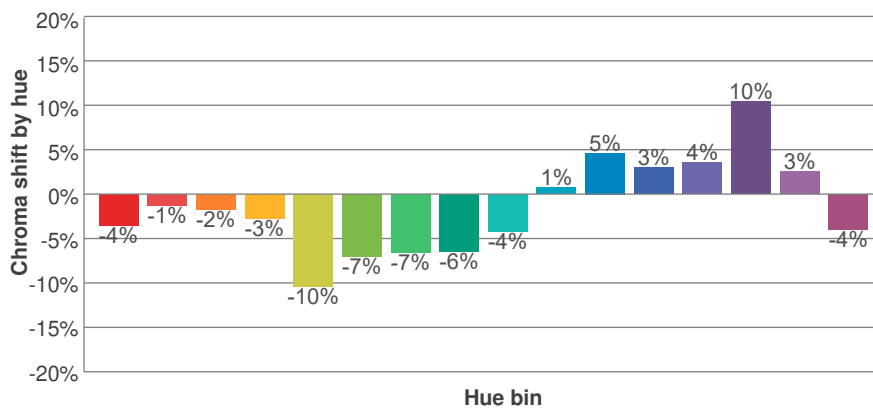
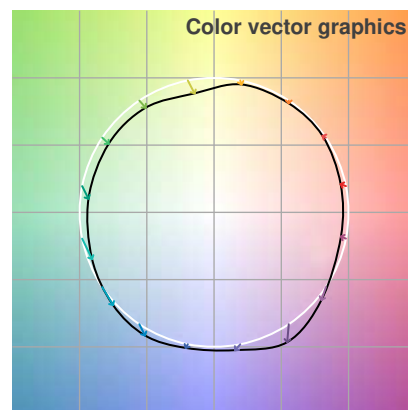
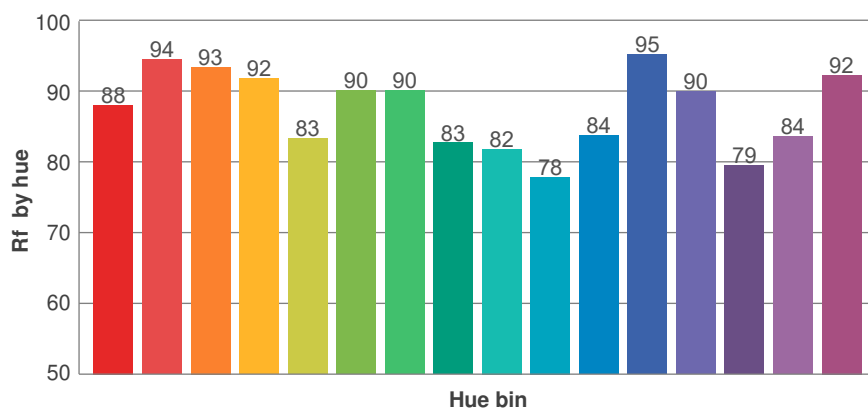
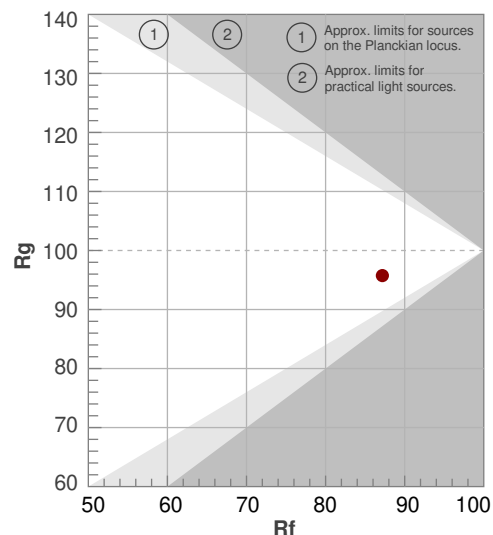
## Rf 87,2

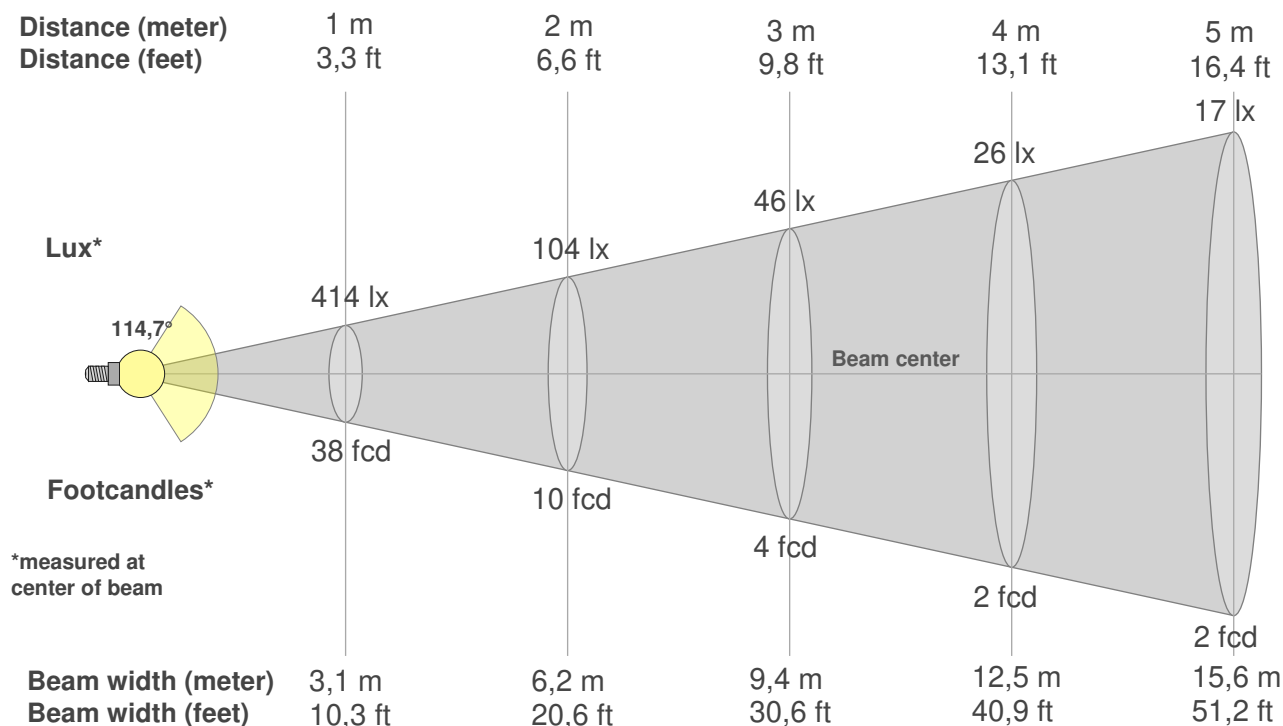
Fidelity index Rf

## Rg 95,7

Gamut index Rg

Hue Bin	R <sub>f</sub>	Graphic shifts (%)	
		Chroma	Hue
1	88	-4%	2%
2	94	-1%	2%
3	93	-2%	-1%
4	92	-3%	-1%
5	83	-10%	-3%
6	90	-7%	-1%
7	90	-7%	1%
8	83	-6%	8%
9	82	-4%	16%
10	78	1%	16%
11	84	5%	8%
12	95	3%	-1%
13	90	4%	-5%
14	79	10%	-8%
15	84	3%	-10%
16	92	-4%	1%





## Beam intensities from 1-20m

1m	2m	3m	4m	5m	6m	7m	8m	9m	10m	11m	12m	13m	14m	15m	16m	17m	18m	19m	20m
3,3ft	6,6ft	9,8ft	13,1ft	16,4ft	19,7ft	23ft	26,2ft	29,5ft	32,8ft	36,1ft	39,4ft	42,7ft	45,9ft	49,2ft	52,5ft	55,8ft	59,1ft	62,3ft	65,6ft
414lx	104lx	46lx	26lx	17lx	12lx	8lx	6lx	5lx	4lx	3lx	3lx	2lx	2lx	2lx	2lx	1lx	1lx	1lx	1lx
38,5fcd	9,6fcd	4,3fcd	2,4fcd	1,5fcd	1,1fcd	0,8fcd	0,6fcd	0,5fcd	0,4fcd	0,3fcd	0,3fcd	0,2fcd	0,2fcd	0,2fcd	0,2fcd	0,1fcd	0,1fcd	0,1fcd	0,1fcd

## Intensities in 0° c-plane

0°	5°	10°	15°	20°	25°	30°	35°	40°	45°	50°	55°	60°	65°	70°	75°	80°	85°	90°	95°
414	411	405	397	384	370	354	333	305	279	254	213	179	144	101	64	39	9	2	2
100%	99%	98%	96%	93%	89%	85%	80%	74%	67%	61%	51%	43%	35%	24%	15%	9%	2%	0%	0%

## Intensities in 90° c-plane

0°	5°	10°	15°	20°	25°	30°	35°	40°	45°	50°	55°	60°	65°	70°	75°	80°	85°	90°	95°
414	412	408	402	391	379	363	344	320	295	266	233	197	157	115	74	38	12	2	2
100%	100%	99%	97%	94%	91%	88%	83%	77%	71%	64%	56%	48%	38%	28%	18%	9%	3%	0%	0%

## Intensities in 180° c-plane

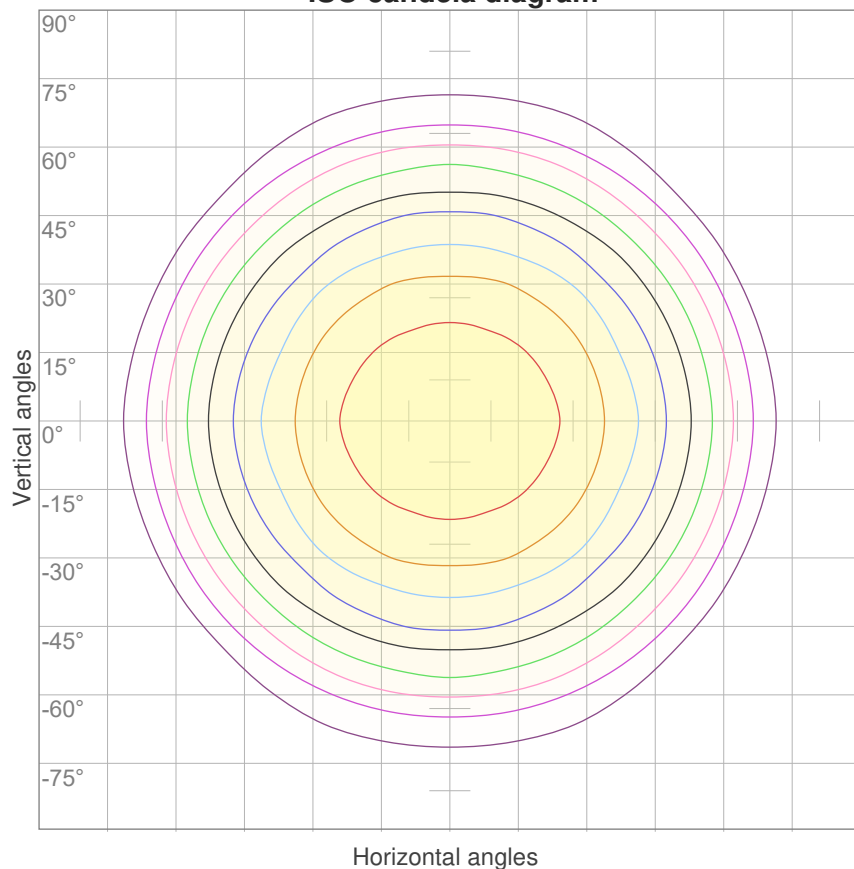
0°	5°	10°	15°	20°	25°	30°	35°	40°	45°	50°	55°	60°	65°	70°	75°	80°	85°	90°	95°
414	411	405	397	384	370	354	333	305	279	254	213	179	144	101	64	39	9	2	2
100%	99%	98%	96%	93%	89%	85%	80%	74%	67%	61%	51%	43%	35%	24%	15%	9%	2%	0%	0%

## Intensities in 270° c-plane

0°	5°	10°	15°	20°	25°	30°	35°	40°	45°	50°	55°	60°	65°	70°	75°	80°	85°	90°	95°
414	412	408	402	391	379	363	344	320	295	266	233	197	157	115	74	38	12	2	2
100%	100%	99%	97%	94%	91%	88%	83%	77%	71%	64%	56%	48%	38%	28%	18%	9%	3%	0%	0%

Beam angle 50%	Field angle 10%	Cutoff angle 2,5%	Intensity ratio in 120° cone	Intensity ratio in 90° cone
114,7°	157,8°	171,1°	80,0%	54,1%

**ISO candela diagram**



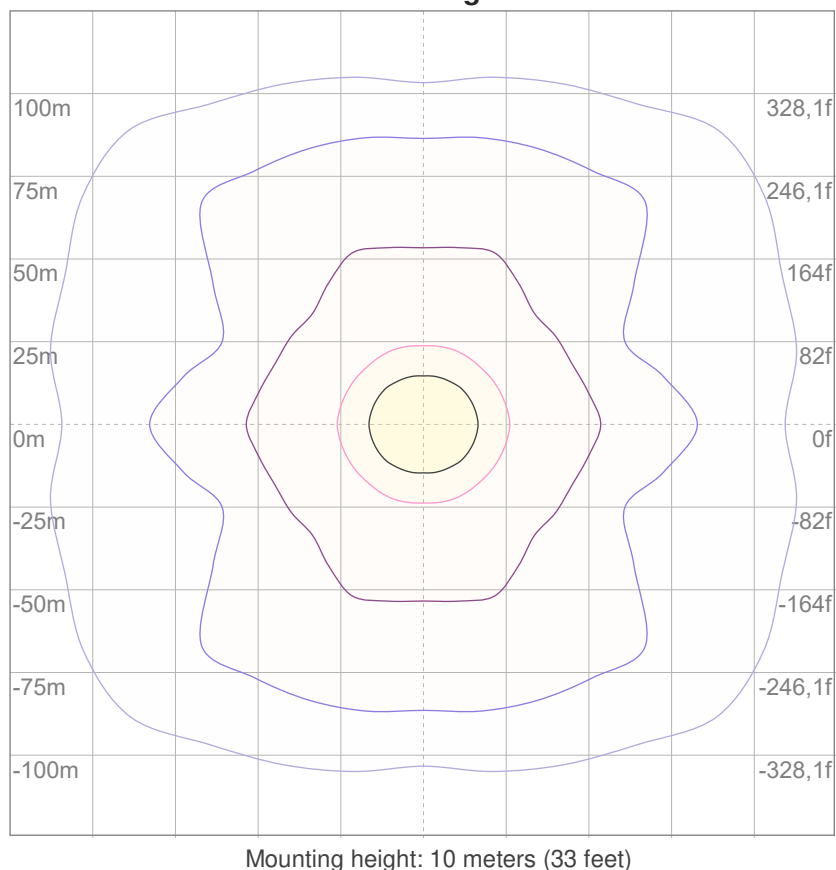
10%	41 cd
20%	83 cd
30%	124 cd
40%	166 cd
50%	207 cd
60%	249 cd
70%	290 cd
80%	331 cd
90%	373 cd

Conditions:

Number of c-planes: 16

Candela at center: 414 cd

**ISO lux diagram**



3%	0,124 lx
5%	0,207 lx
10%	0,414 lx
30%	1,24 lx
50%	2,07 lx

Conditions:

Number of c-planes: 16

Lux at center: 4,14 lx

*Lux distribution on a surface when lamp is mounted at 10 meters from the surface.*

### Glare Evaluation According to UGR

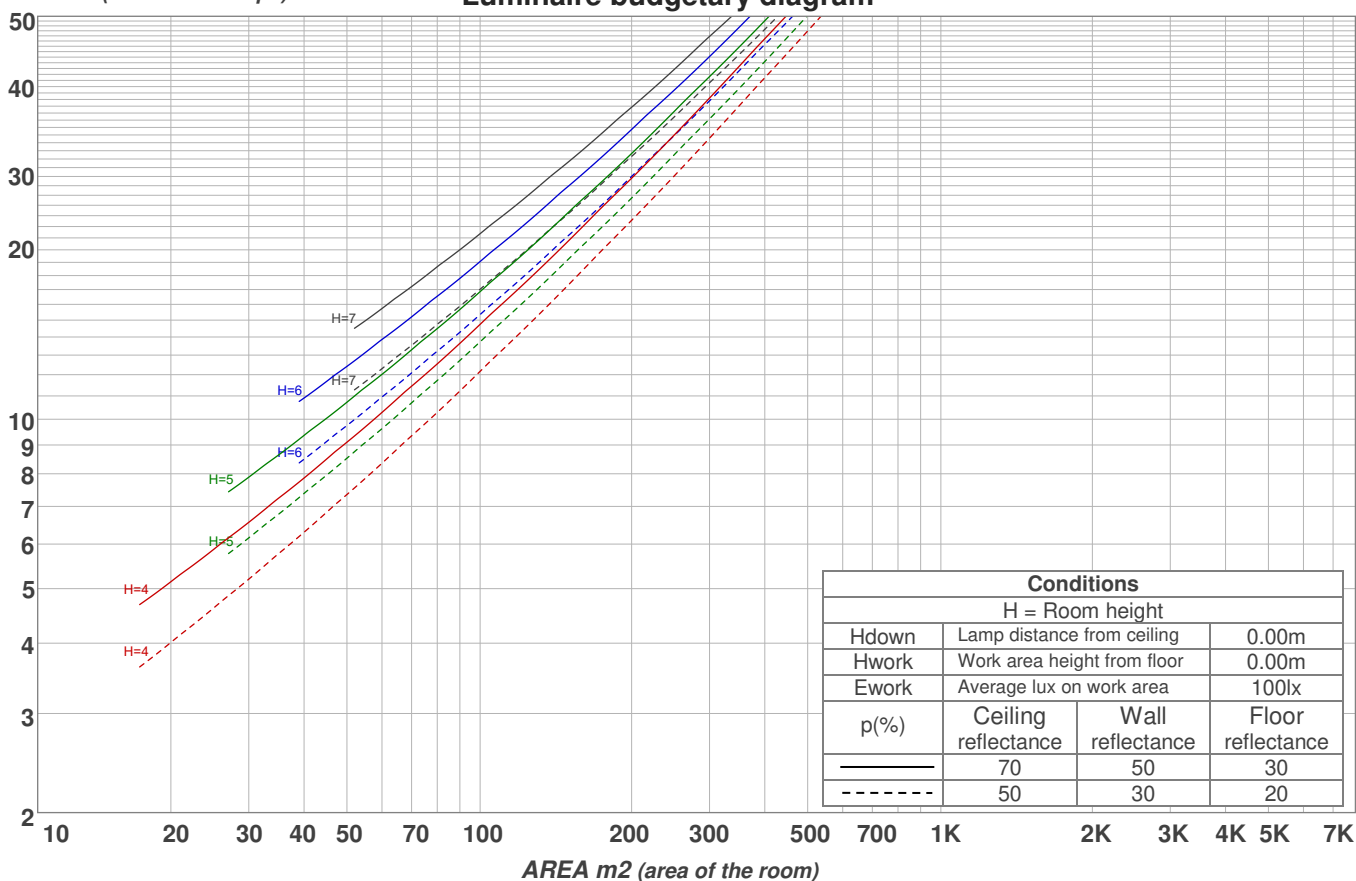
p Ceiling		70	70	50	50	30	70	70	50	50	30
p Walls		50	30	50	30	30	50	30	50	30	30
p Floor		20	20	20	20	20	20	20	20	20	20
Room size X      Y		Viewing direction at right angles to lamp axis					Viewing direction parallel to lamp axis				
2H	2H	26,5	27,7	26,7	28,0	28,2	27,6	28,8	27,8	29,1	29,3
	3H	27,5	28,8	27,9	29,1	29,3	28,9	30,2	29,3	30,5	30,7
	4H	27,8	29,0	28,3	29,3	29,6	29,4	30,6	29,8	30,9	31,1
	6H	28,1	29,1	28,4	29,4	29,8	29,7	30,8	30,1	31,1	31,4
	8H	28,1	29,1	28,5	29,4	29,9	29,8	30,8	30,1	31,1	31,5
	12H	28,1	29,1	28,5	29,4	29,9	29,8	30,8	30,2	31,1	31,6
4H	2H	27,1	28,3	27,5	28,6	28,8	27,9	29,1	28,3	29,4	29,7
	3H	28,4	29,4	28,8	29,7	30,2	29,6	30,5	29,9	30,9	31,3
	4H	28,7	29,6	29,1	30,0	30,6	30,0	30,9	30,5	31,3	31,9
	6H	29,0	29,8	29,5	30,2	30,6	30,3	31,2	30,8	31,6	31,9
	8H	29,0	29,8	29,5	30,2	30,6	30,4	31,2	30,9	31,6	32,0
	12H	29,0	29,7	29,5	30,1	30,6	30,4	31,1	30,9	31,5	32,0
8H	4H	28,9	29,7	29,4	30,0	30,4	30,1	30,9	30,6	31,3	31,6
	6H	29,2	29,8	29,7	30,3	30,8	30,5	31,1	31,0	31,5	32,1
	8H	29,4	29,9	29,9	30,4	31,0	30,6	31,1	31,1	31,6	32,3
	12H	29,4	29,8	30,0	30,3	30,9	30,7	31,1	31,2	31,6	32,2
12H	4H	28,9	29,5	29,4	29,9	30,4	30,1	30,7	30,6	31,2	31,6
	6H	29,3	29,8	29,8	30,3	31,0	30,5	31,0	31,0	31,5	32,2
	8H	29,4	29,8	30,0	30,3	30,9	30,6	31,0	31,2	31,6	32,2
Variation of the observer position for the luminaire distance S											
S = 1.0H		0,1 / -0,2					0,0 / -0,1				
S = 1.5H		0,4 / -0,5					0,3 / -0,4				
S = 2.0H		0,7 / -1,0					0,8 / -1,0				
Standard table		n/a					n/a				
Correction summand		n/a					n/a				
Corrected glare indices referring to 1193 lm total luminous flux											

## Coefficients of Utilization

Ceiling reflectance	80				70				50			30			10			0
Wall reflectance	70	50	30	10	70	50	30	10	50	30	10	50	30	10	50	30	10	0
Floor reflectance	20	20	20	20	20	20	20	20	20	20	20	20	20	20	20	20	20	0
RCR	(RCR: Room Cavity Ratio) Room Values are expressed as percentage of Lumens delivered to the task surface																	
0	119	119	119	119	116	116	116	116	111	111	111	106	106	106	102	102	102	100
1	109	104	100	96	106	102	98	95	98	95	92	94	91	89	90	88	86	84
2	99	91	84	79	96	89	83	78	85	80	76	82	78	74	79	75	72	70
3	90	80	72	65	88	78	71	65	75	69	63	72	67	62	70	65	61	59
4	83	71	62	55	80	69	61	55	67	60	54	64	58	53	62	57	52	50
5	76	63	54	48	74	62	54	47	60	52	47	58	51	46	56	50	46	43
6	70	57	48	41	68	56	47	41	54	46	41	52	45	40	51	45	40	38
7	65	51	43	36	63	51	42	36	49	41	36	47	41	36	46	40	35	33
8	60	47	38	32	59	46	38	32	45	37	32	43	37	32	42	36	32	30
9	56	43	35	29	55	42	34	29	41	34	29	40	33	29	39	33	29	27
10	53	40	32	26	52	39	31	26	38	31	26	37	31	26	36	30	26	24

LAMPS (number of lamps)

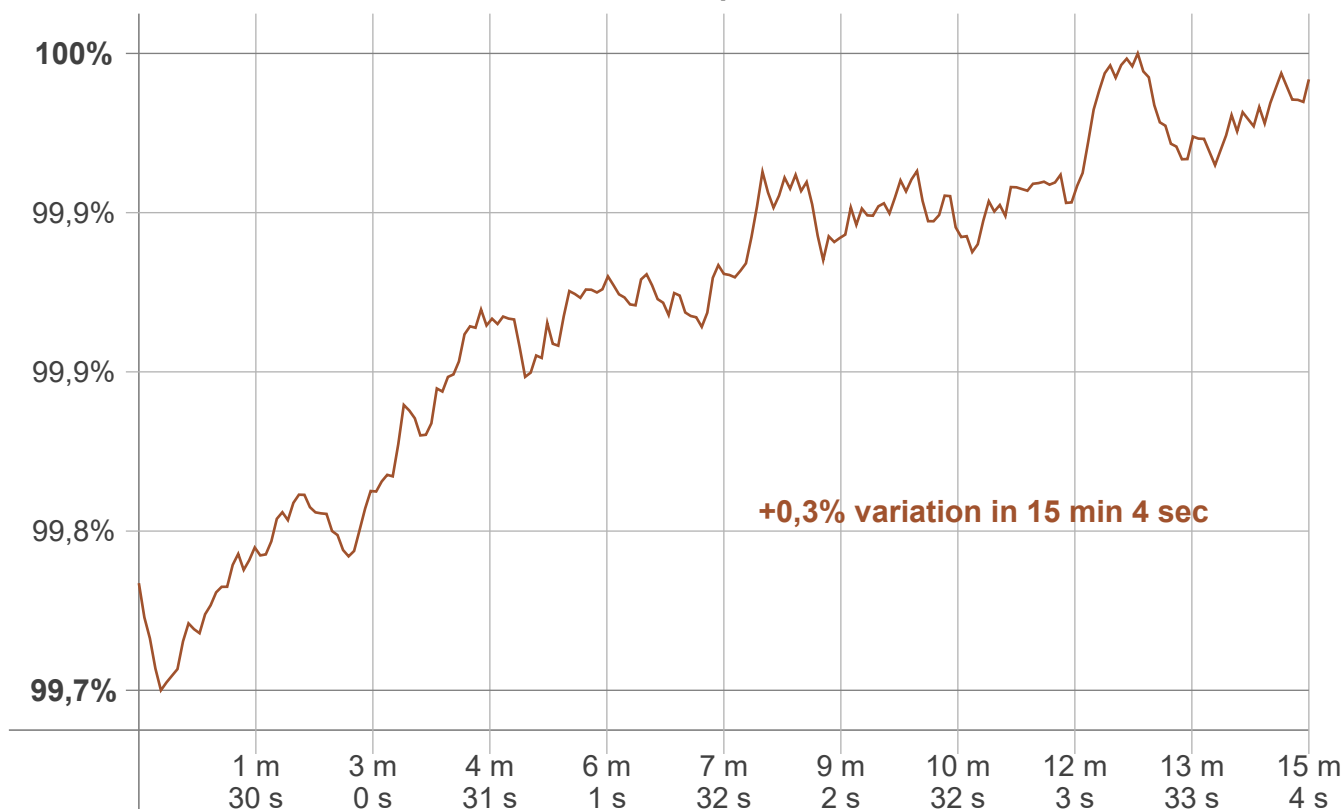
## Luminaire budgetary diagram



## Zonal Lumen Summary

0°-10°	10°-20°	20°-30°	30°-40°	40°-50°	50°-60°	60°-70°	70°-80°	80°-90°
39,1 lm	113 lm	172 lm	211 lm	220 lm	200 lm	146 lm	71,5 lm	16,0 lm
90°-100°	100°-110°	110°-120°	120°-130°	130°-140°	140°-150°	150°-160°	160°-170°	170°-180°
1,88 lm	0,937 lm	0,793 lm	0,717 lm	0,448 lm	0,235 lm	0,173 lm	0,106 lm	0,036 lm

## Warmup curve



## Warmup result

Warmup time:	Lamp stabilized in 15 min 4 sec
Warmup variation	+0,3%

## Warmup conditions

Stable period:	15 min
Stable change max:	2,0%
Minimum time:	15 min

## Color temperature change

CCT start	CCT change	CCT end
6773 K	+1 K	6774 K

## Output change

Output start	Output change	Output end
1192 lm	+1 lm	1193 lm