

Light efficiency:

120 Lumen/Watt

Light quality:

CRI: 83,4

Color temperature:

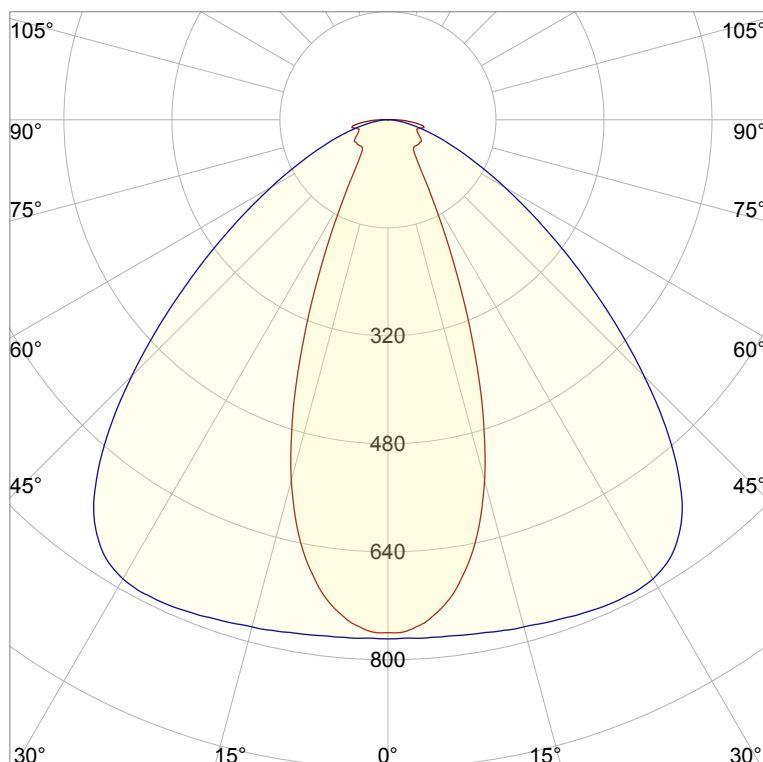
4049 K

Output: 981 lm

Peak: 789 cd

Power: 8,2 W

PF: 1,0



Product name:

Pegasus-3-Gold-0508-840-L3F

Item number:

FLNP-L-16A-0508-840-L3F

Date and time:

23.02.2021 14:35:57

Description:

Rank: S15ZT

Toleranzen:

Lumen +/-4%

Candela +/-2,5%

Colour Temp +/-35 Grad K

CRI +/-0,7

Angular Resolution 1 Grad step

Last Calibration 20-05-2020

Pruefer: Peter Ulrich

Pruefort: Lichtlabor

Gaustrasse13-15

55411 Bingen am Rhein

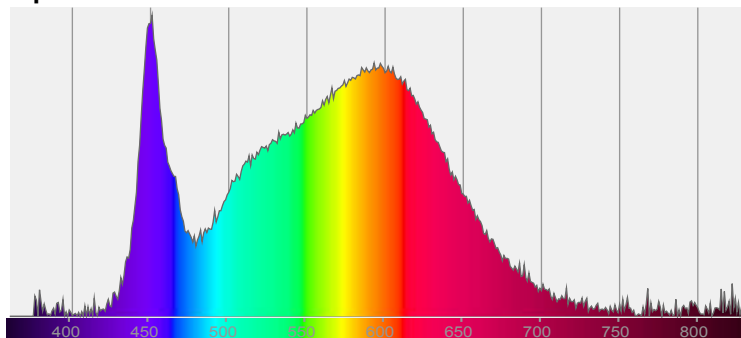


CIE 1931

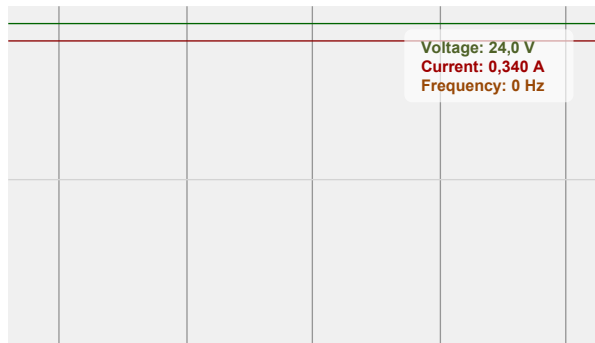
x: 0,379

y: 0,377

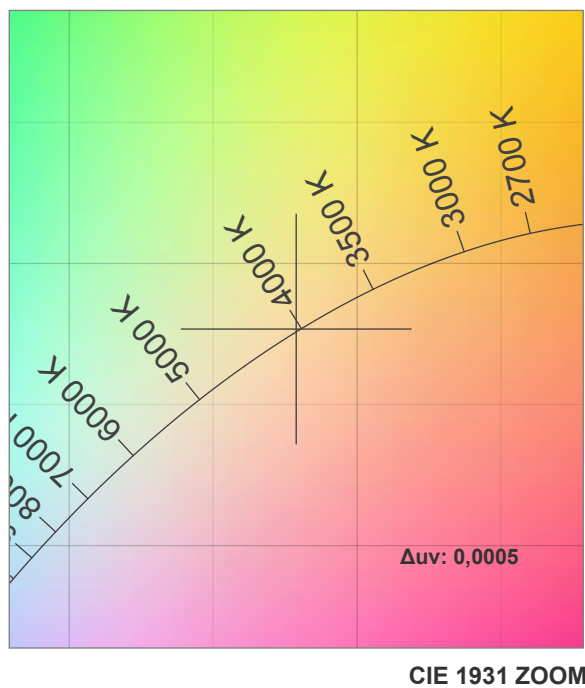
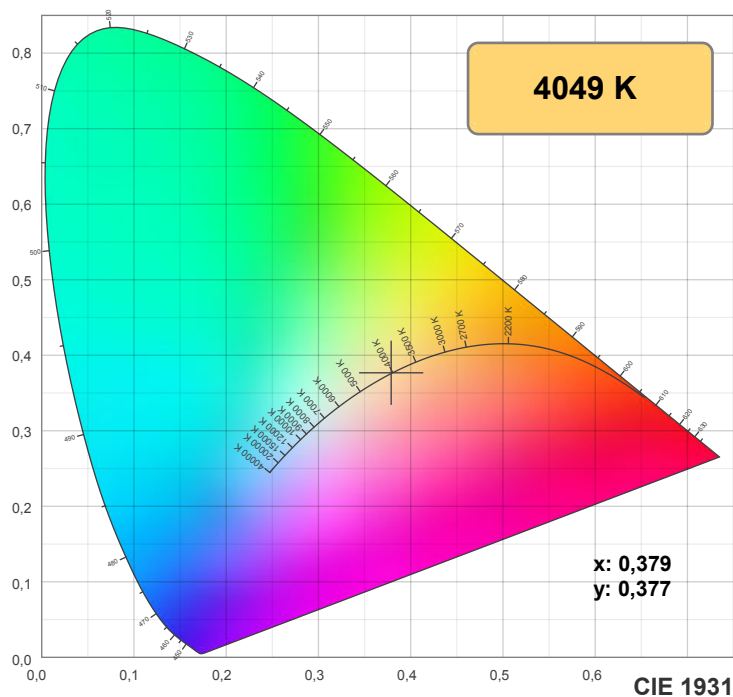
Spectra



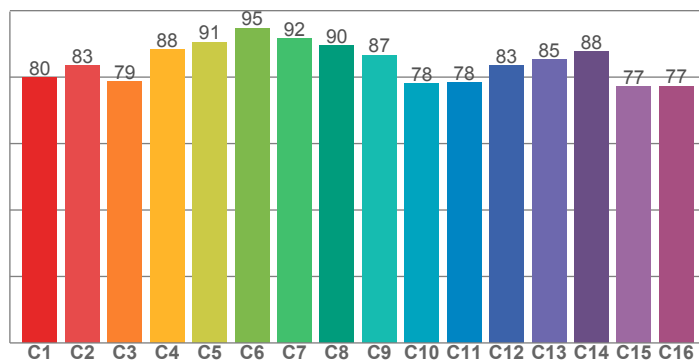
Power



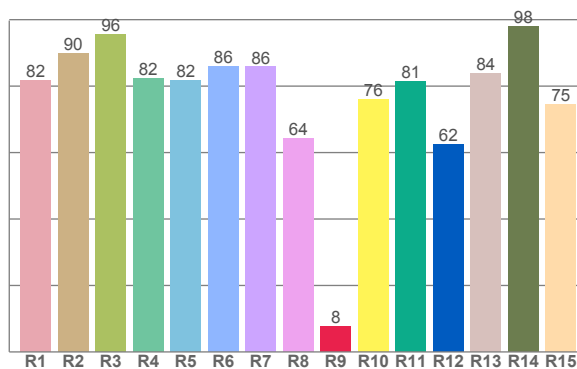
Voltage: 24,0 V
Current: 0,340 A
Frequency: 0 Hz



TM30: 84,3



CRI: 83,4 (R1-R8)



CRI R values, only R1-R8 are used to calculate final CRI value

R1	R2	R3	R4	R5	R6	R7	R8	R9	R10	R11	R12	R13	R14	R15
81,6	89,9	95,5	82,2	81,7	85,8	85,8	64,2	7,7	76,0	81,4	62,4	83,8	97,9	74,6

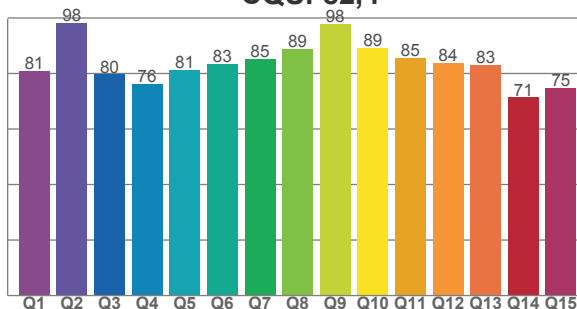
TM30 C values, 16 binned values out of total of 99 C values

C1	C2	C3	C4	C5	C6	C7	C8	C9	C10	C11	C12	C13	C14	C15	C16
79,8	83,4	78,6	88,4	90,6	94,8	91,5	89,6	86,7	78,2	78,4	83,4	85,4	87,6	77,3	77,3

CQS Q values

Q1	Q2	Q3	Q4	Q5	Q6	Q7	Q8	Q9	Q10	Q11	Q12	Q13	Q14	Q15
80,9	98,1	79,7	76,2	81,3	83,4	85,3	88,8	97,7	89,3	85,5	83,7	83,0	71,4	74,9

CQS: 82,4



Color parameters

Color temperature	Color rendering index	Red component	Color fidelity	Color gamut	Color quality scale	Color coordinate cie 1931	Color coordinate cie 1931	Color coordinate	Color coordinate	Color deviation from black body
CCT	CRI	CRI R9	TM30 Rf	TM30 Rg	CQS	x	y	u	v	Δuv
4049 K	83,4	7,7	84,3	95,2	82,4	0,379	0,377	0,224	0,334	0,0005

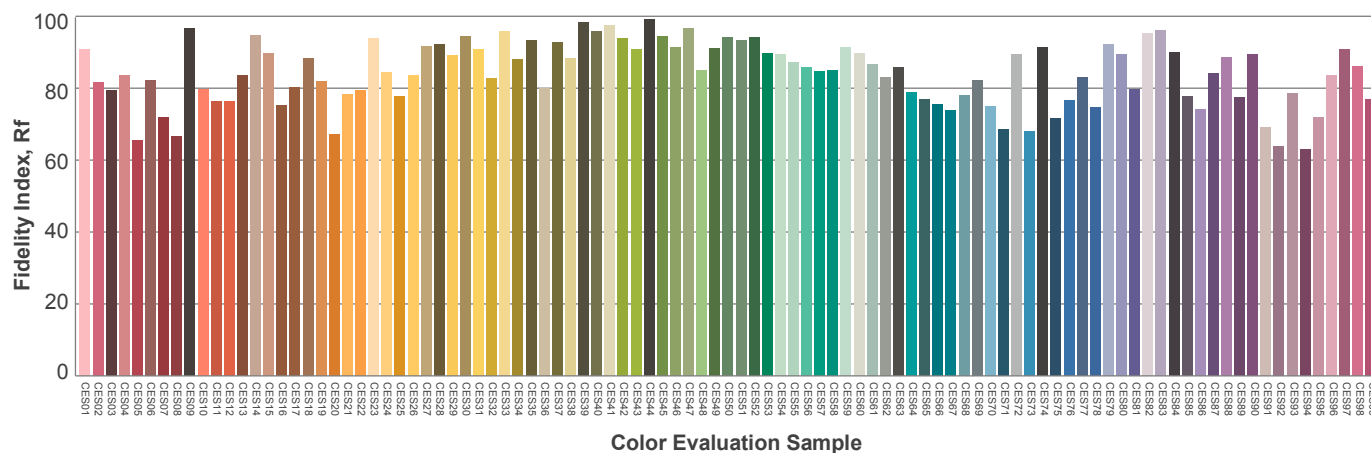
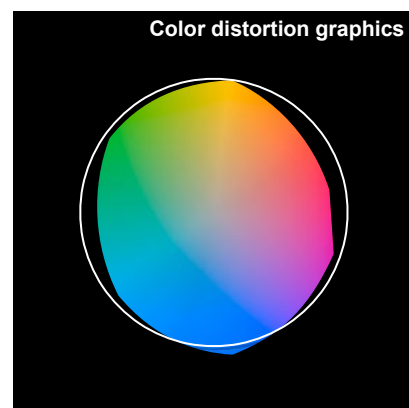
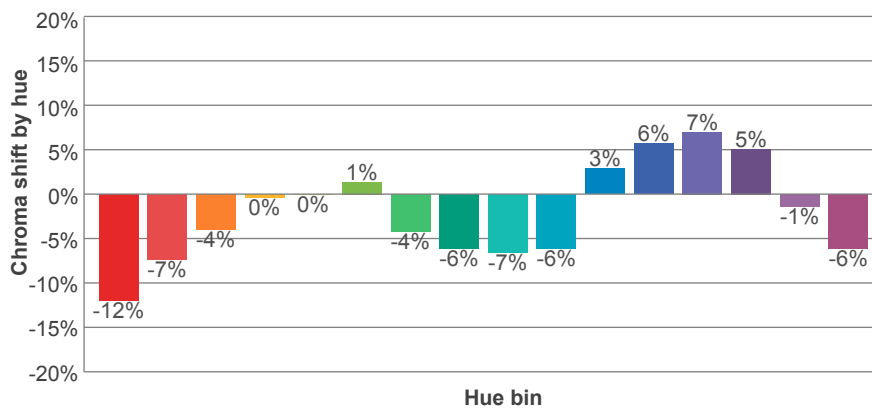
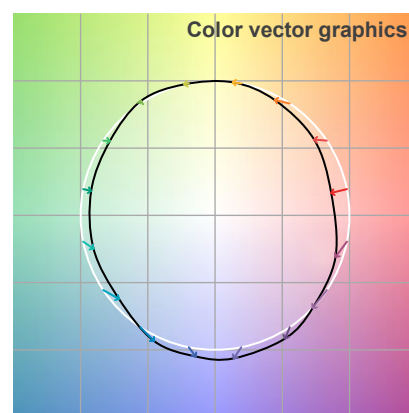
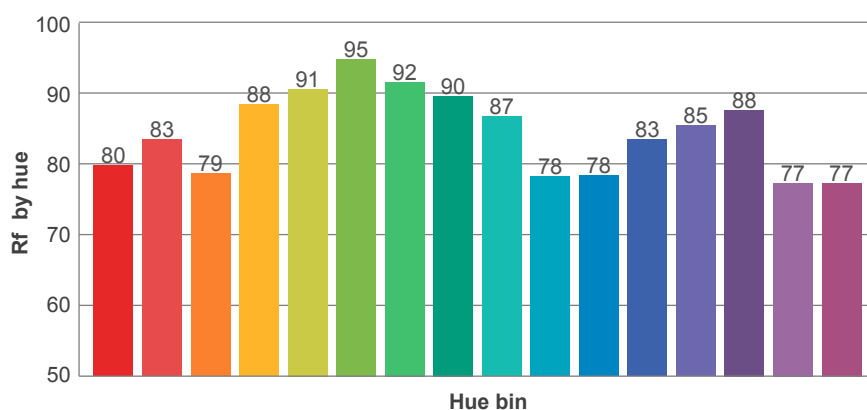
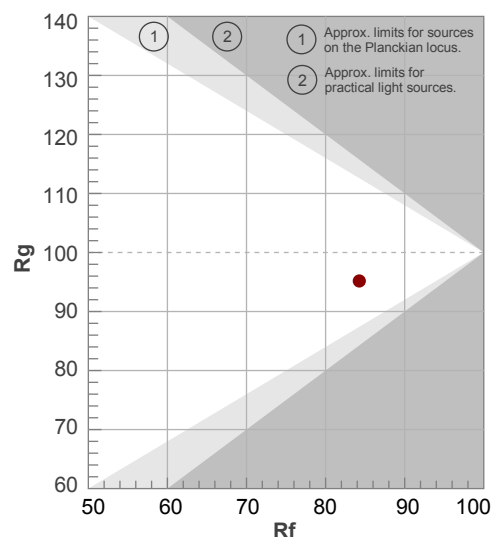
Rf 84,3

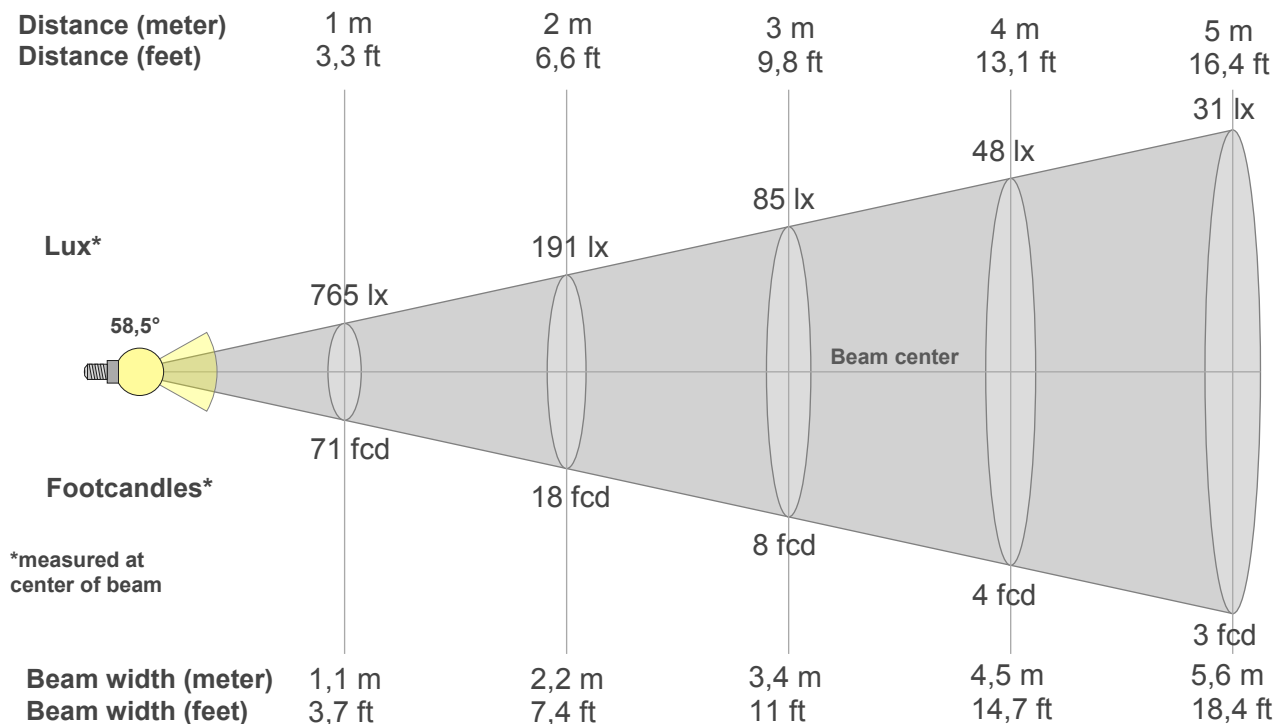
Fidelity index Rf

Rg 95,2

Gamut index Rg

Hue Bin	R _f	Graphic shifts (%)	
		Chroma	Hue
1	80	-12%	0%
2	83	-7%	6%
3	79	-4%	11%
4	88	0%	6%
5	91	0%	3%
6	95	1%	-2%
7	92	-4%	-3%
8	90	-6%	0%
9	87	-7%	7%
10	78	-6%	12%
11	78	3%	14%
12	83	6%	6%
13	85	7%	-7%
14	88	5%	-8%
15	77	-1%	-17%
16	77	-6%	-13%





Beam intensities from 1-20m

1m	2m	3m	4m	5m	6m	7m	8m	9m	10m	11m	12m	13m	14m	15m	16m	17m	18m	19m	20m
3,3ft	6,6ft	9,8ft	13,1ft	16,4ft	19,7ft	23ft	26,2ft	29,5ft	32,8ft	36,1ft	39,4ft	42,7ft	45,9ft	49,2ft	52,5ft	55,8ft	59,1ft	62,3ft	65,6ft
765lx	191lx	85lx	48lx	31lx	21lx	16lx	12lx	9lx	8lx	6lx	5lx	5lx	4lx	3lx	3lx	3lx	2lx	2lx	2lx
71fcd	17,8fcd	7,9fcd	4,4fcd	2,8fcd	2fcd	1,4fcd	1,1fcd	0,9fcd	0,7fcd	0,6fcd	0,5fcd	0,4fcd	0,4fcd	0,3fcd	0,3fcd	0,2fcd	0,2fcd	0,2fcd	0,2fcd

Intensities in 0° c-plane

0°	2°	4°	6°	8°	10°	12°	14°	16°	18°	20°	22°	24°	26°	28°	30°	32°	34°	36°	38°
765	758	748	730	706	672	632	581	522	455	383	315	252	200	157	125	101	84	73	65
100%	99%	98%	95%	92%	88%	83%	76%	68%	59%	50%	41%	33%	26%	21%	16%	13%	11%	10%	8%

Intensities in 90° c-plane

0°	2°	4°	6°	8°	10°	12°	14°	16°	18°	20°	22°	24°	26°	28°	30°	32°	34°	36°	38°
765	768	770	770	771	773	775	777	778	781	784	786	788	789	789	785	776	761	738	706
100%	100%	101%	101%	101%	101%	101%	102%	102%	102%	102%	103%	103%	103%	103%	103%	102%	100%	97%	92%

Intensities in 180° c-plane

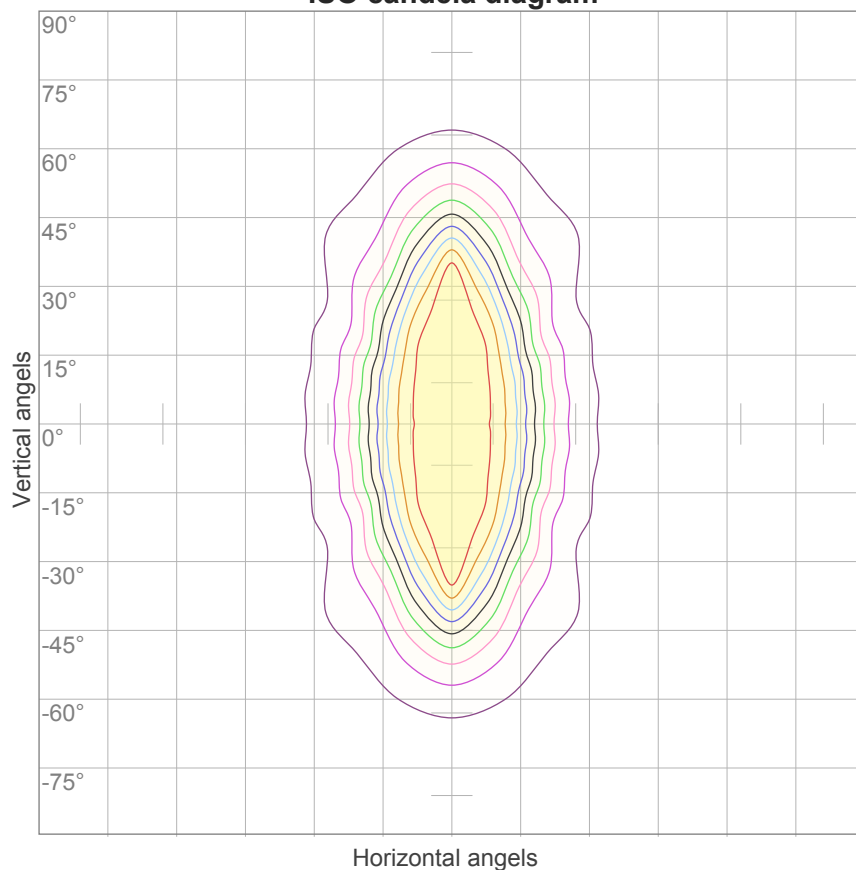
0°	2°	4°	6°	8°	10°	12°	14°	16°	18°	20°	22°	24°	26°	28°	30°	32°	34°	36°	38°
765	758	748	730	706	672	632	581	522	455	383	315	252	200	157	125	101	84	73	65
100%	99%	98%	95%	92%	88%	83%	76%	68%	59%	50%	41%	33%	26%	21%	16%	13%	11%	10%	8%

Intensities in 270° c-plane

0°	2°	4°	6°	8°	10°	12°	14°	16°	18°	20°	22°	24°	26°	28°	30°	32°	34°	36°	38°
765	768	770	770	771	773	775	777	778	781	784	786	788	789	789	785	776	761	738	706
100%	100%	101%	101%	101%	101%	101%	102%	102%	102%	102%	103%	103%	103%	103%	103%	102%	100%	97%	92%

Beam angle 50%	Field angle 10%	Cutoff angle 2,5%	Intensity ratio in 120° cone	Intensity ratio in 90° cone
58,5°	96,5°	172,4°	84,4%	70,0%

ISO candela diagram



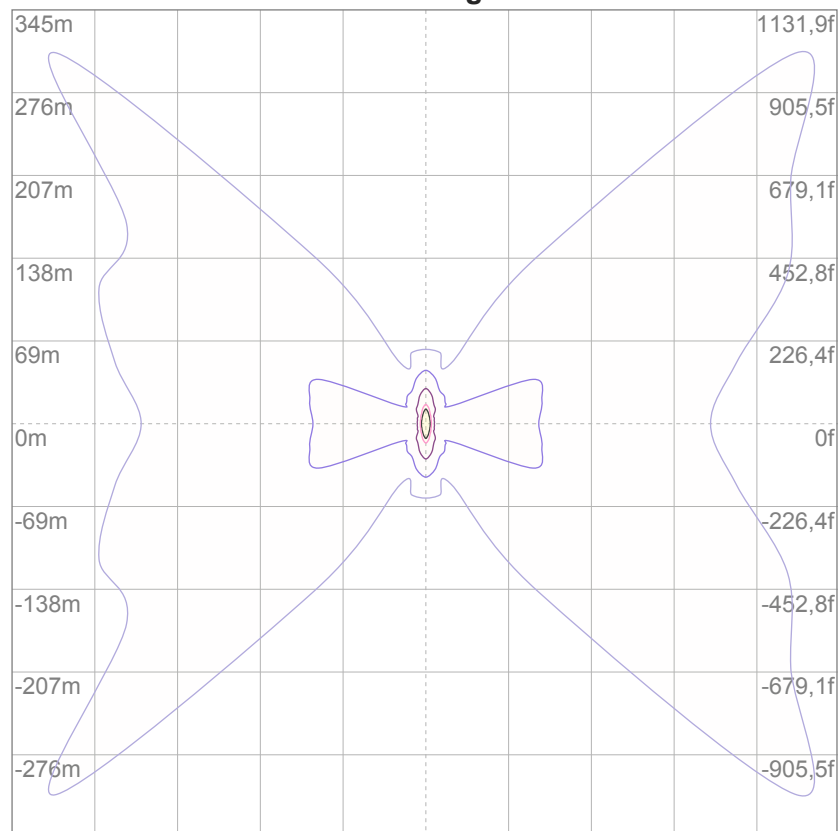
10%	76 cd
20%	153 cd
30%	229 cd
40%	306 cd
50%	382 cd
60%	459 cd
70%	535 cd
80%	612 cd
90%	688 cd

Conditions:

Number of c-planes: 16

Candela at center: 765 cd

ISO lux diagram



3%	0,229 lx
5%	0,382 lx
10%	0,765 lx
30%	2,29 lx
50%	3,82 lx

Conditions:

Number of c-planes: 16

Lux at center: 7,65 lx

*Lux distribution on a surface
when lamp is mounted at 10
meters from the surface.*

Glare Evaluation According to UGR

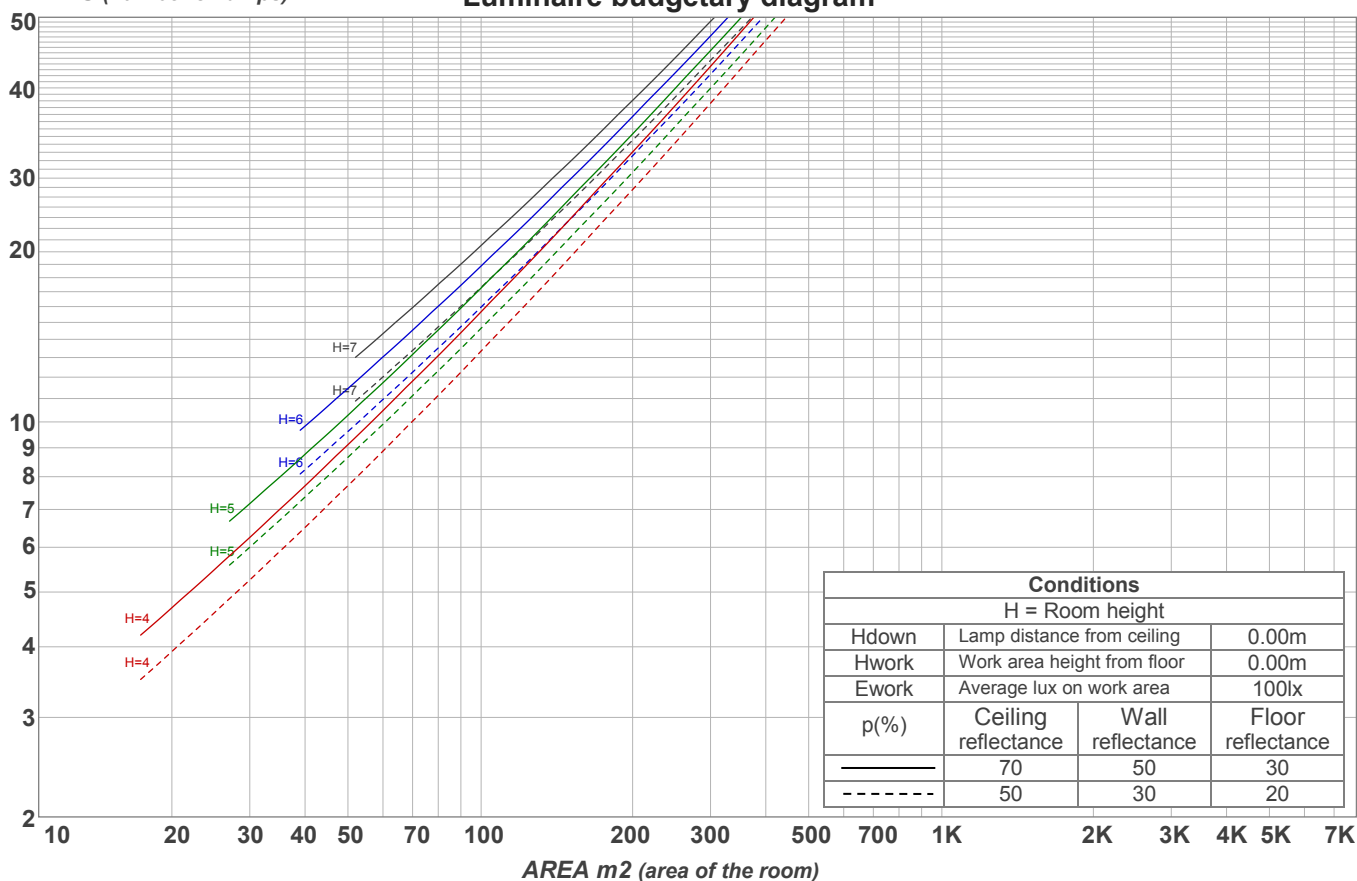
p Ceiling		70	70	50	50	30	70	70	50	50	30
p Walls		50	30	50	30	30	50	30	50	30	30
p Floor		20	20	20	20	20	20	20	20	20	20
Room size X Y		Viewing direction at right angles to lamp axis					Viewing direction parallel to lamp axis				
2H	2H	14,7	15,6	14,8	15,9	16,1	23,8	24,8	24,0	25,1	25,3
	3H	16,6	17,6	17,0	17,9	18,1	24,5	25,6	24,9	25,8	26,0
	4H	17,8	18,8	18,2	19,1	19,3	24,8	25,9	25,2	26,1	26,4
	6H	19,6	20,4	19,9	20,7	21,1	25,1	26,0	25,4	26,3	26,6
	8H	20,2	21,1	20,6	21,4	21,8	25,2	26,0	25,5	26,3	26,7
	12H	20,7	21,5	21,0	21,8	22,3	25,2	26,0	25,5	26,3	26,8
4H	2H	15,5	16,5	15,9	16,7	17,0	23,6	24,6	24,0	24,8	25,1
	3H	17,6	18,5	18,0	18,8	19,2	24,5	25,3	24,9	25,7	26,1
	4H	19,0	19,7	19,4	20,1	20,7	24,8	25,6	25,2	26,0	26,5
	6H	20,8	21,6	21,3	21,9	22,3	25,1	25,9	25,6	26,2	26,6
	8H	21,6	22,3	22,1	22,7	23,0	25,2	25,9	25,7	26,2	26,6
	12H	22,1	22,7	22,6	23,1	23,6	25,2	25,8	25,7	26,2	26,7
8H	4H	19,4	20,1	19,9	20,4	20,8	24,8	25,5	25,3	25,8	26,2
	6H	21,5	22,0	22,0	22,5	23,0	25,2	25,7	25,7	26,1	26,7
	8H	22,5	23,0	23,0	23,5	24,1	25,3	25,8	25,8	26,3	26,9
	12H	23,2	23,6	23,8	24,1	24,7	25,5	25,8	26,0	26,3	26,9
12H	4H	19,4	20,0	19,9	20,4	20,9	24,8	25,3	25,3	25,8	26,2
	6H	21,7	22,1	22,2	22,6	23,3	25,2	25,7	25,7	26,2	26,8
	8H	22,7	23,1	23,3	23,6	24,2	25,4	25,8	26,0	26,3	26,9
Variation of the observer position for the luminaire distance S											
S = 1.0H		0,1 / -0,1					1,1 / -1,1				
S = 1.5H		0,1 / -0,1					2,5 / -2,2				
S = 2.0H		0,2 / -0,2					3,8 / -3,1				
Standard table		n/a					n/a				
Correction summand		n/a					n/a				
Corrected glare indices referring to 981 lm total luminous flux											

Coefficients of Utilization

Ceiling reflectance	80				70				50			30			10			0
Wall reflectance	70	50	30	10	70	50	30	10	50	30	10	50	30	10	50	30	10	0
Floor reflectance	20	20	20	20	20	20	20	20	20	20	20	20	20	20	20	20	20	0
RCR	(RCR: Room Cavity Ratio) Room Values are expressed as percentage of Lumens delivered to the task surface																	
0	118	118	118	118	115	115	115	115	110	110	110	104	104	104	100	100	100	97
1	110	105	102	98	107	103	100	97	98	96	93	94	92	90	90	88	87	84
2	102	95	89	84	99	93	87	83	89	84	81	85	82	78	82	79	76	74
3	95	86	79	73	92	84	78	73	81	75	71	78	73	70	75	71	68	66
4	88	78	71	65	86	77	70	65	74	68	63	71	66	62	69	65	61	59
5	83	72	64	58	80	70	63	58	68	62	57	66	61	56	64	59	56	54
6	77	66	58	53	75	65	58	53	63	57	52	61	56	51	60	55	51	49
7	73	61	54	48	71	60	53	48	59	52	48	57	51	47	56	51	47	45
8	69	57	50	44	67	56	49	44	55	48	44	53	48	44	52	47	43	41
9	65	53	46	41	63	52	46	41	51	45	41	50	44	40	49	44	40	38
10	61	50	43	38	60	49	43	38	48	42	38	47	42	38	46	41	37	36

LAMPS (number of lamps)

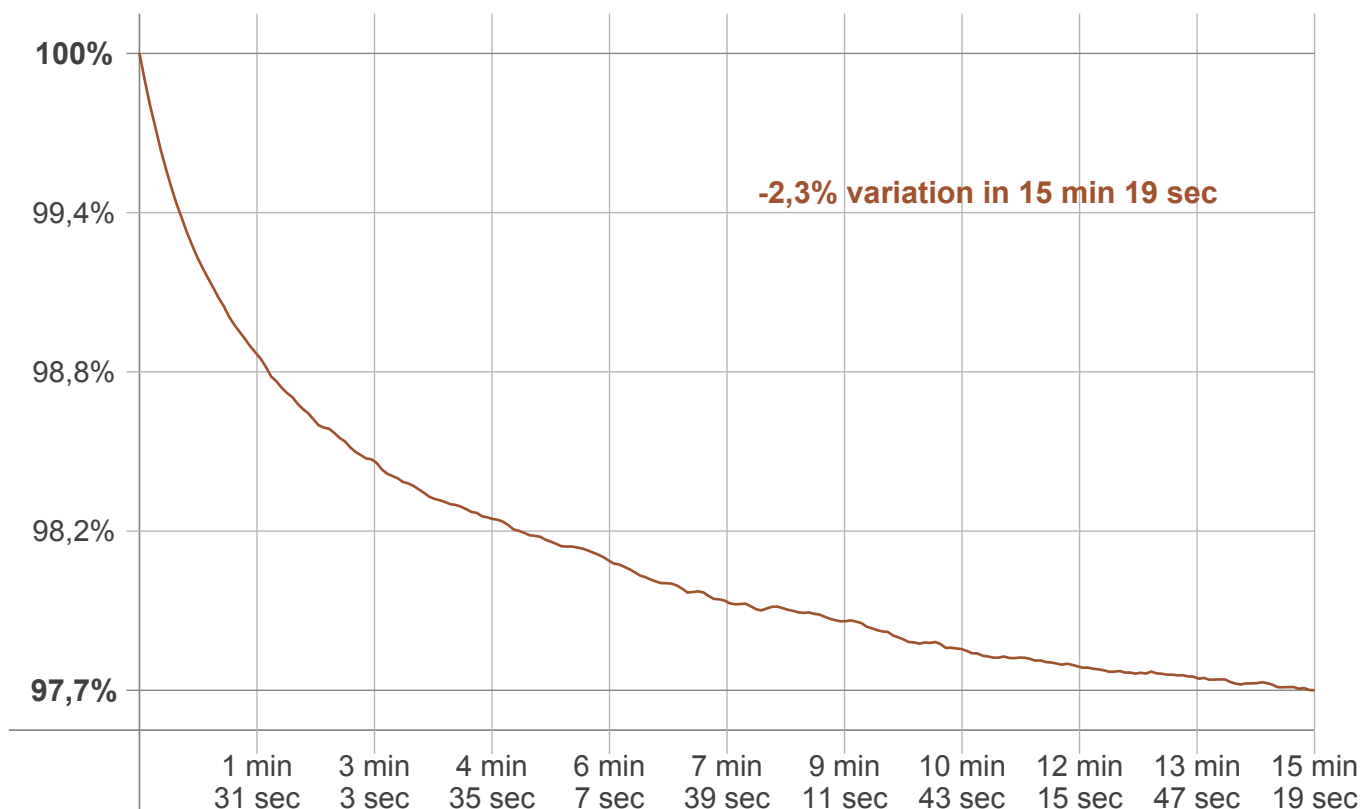
Luminaire budgetary diagram



Zonal Lumen Summary

0°-10°	10°-20°	20°-30°	30°-40°	40°-50°	50°-60°	60°-70°	70°-80°	80°-90°
71,0 lm	183 lm	205 lm	164 lm	119 lm	85,8 lm	59,0 lm	41,4 lm	26,9 lm
90°-100°	100°-110°	110°-120°	120°-130°	130°-140°	140°-150°	150°-160°	160°-170°	170°-180°
7,38 lm	4,10 lm	3,59 lm	3,25 lm	2,75 lm	2,20 lm	1,62 lm	0,991 lm	0,334 lm

Warmup curve



Warmup result

Warmup time:	15 min 19 sec
Warmup variation	-2,3%

Warmup conditions

Stable period:	15 min
Stable change max:	2,0%
Minimum time:	15 min

Color temperature change

CCT start	CCT change	CCT end
4032 K	+17 K	4049 K

Output change

Output start	Output change	Output end
1002 lm	-21 lm	981 lm