

Light efficiency:

84 Lumen/Watt

Light quality:

CRI: 92,3

Color temperature:

3027 K

Output: 830 lm

Peak: 711 cd

Power: 9,8 W

PF: 1,0



Product name:

Pegasus-3-Gold-0508-930-L3F

Item number:

FLNP/L/16A0508/930/L3F

Date and time:

05.05.2021 14:02:04

Description:

Rank: M27ZT

Toleranzen:

Lumen +/-4%

Candela +/-2,5%

Colour Temp +/-35 K

CRI +/- 0,7

Angular Resolution 1 Grad step

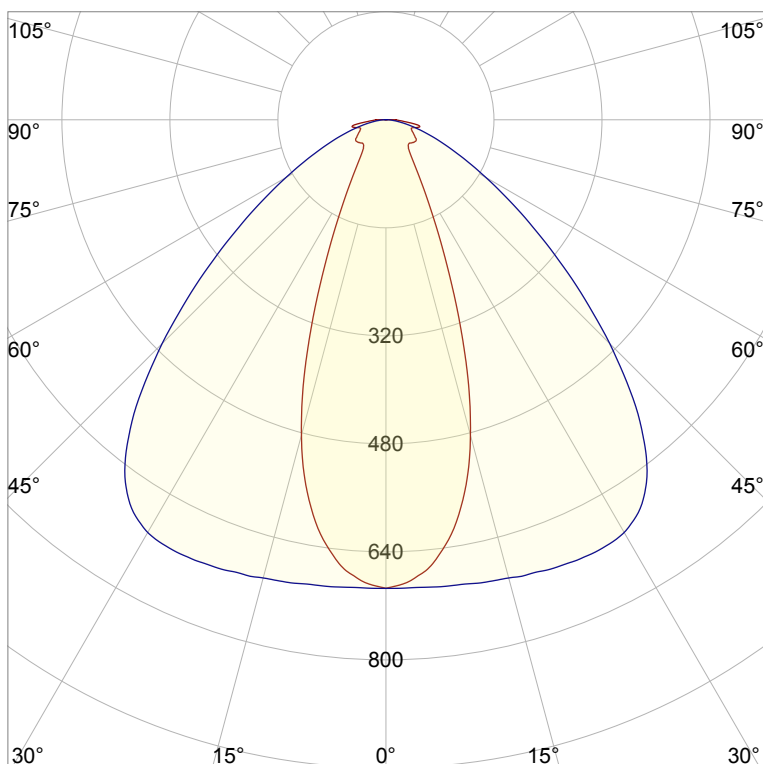
Last Calibration 20-05-2020

Pruefer: Peter Ulrich

Pruefort: Lichtlabor

Gaustasse13

55411 Bingen am Rhein

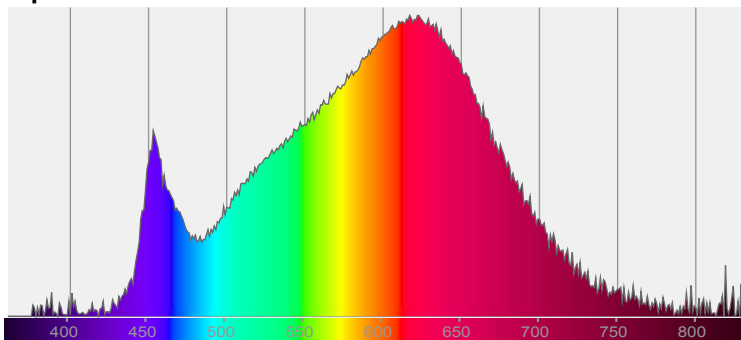


CIE 1931

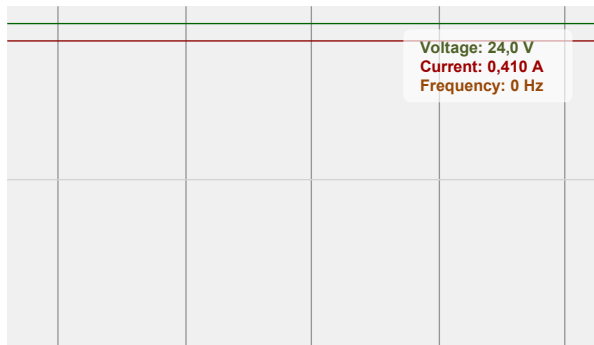
x: 0,434

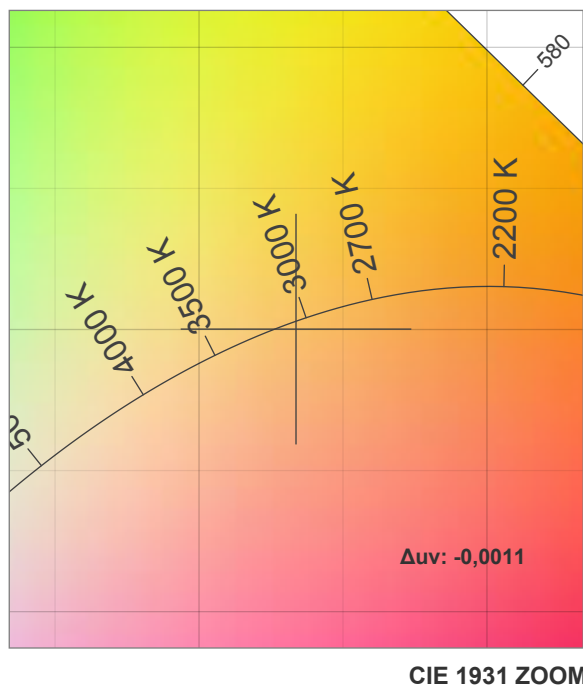
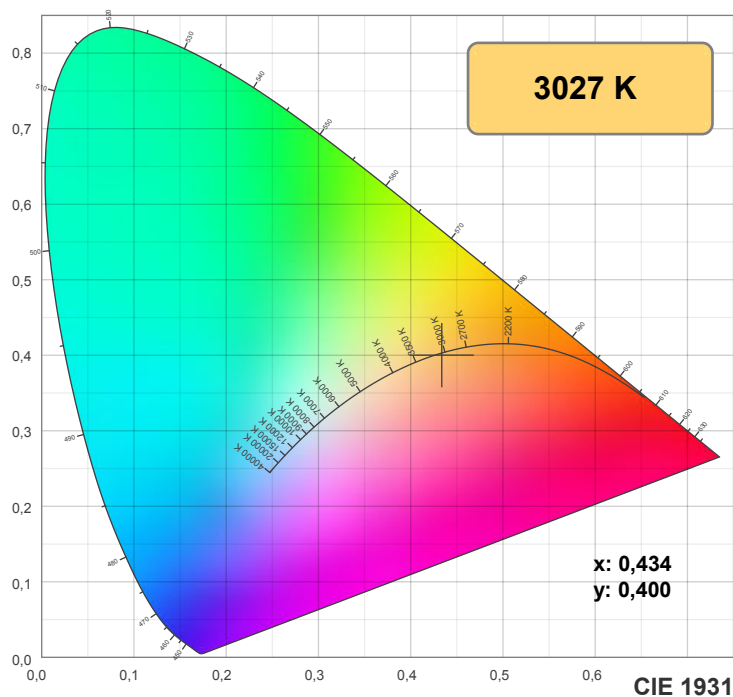
y: 0,400

Spectra

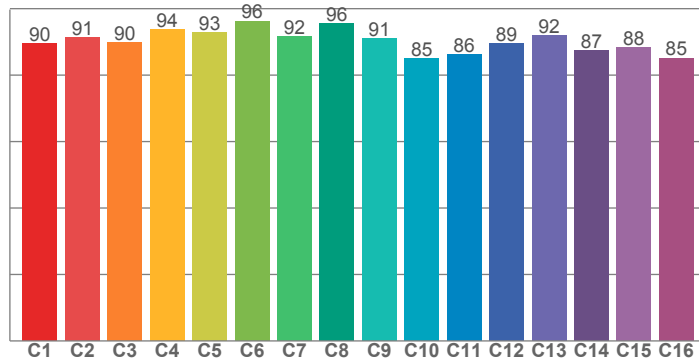


Power

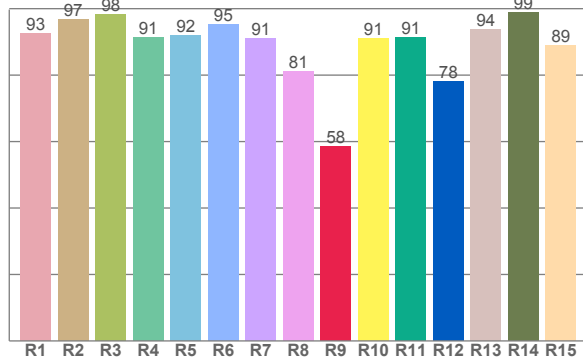




TM30: 90,4



CRI: 92,3 (R1-R8)



CRI R values, only R1-R8 are used to calculate final CRI value

R1	R2	R3	R4	R5	R6	R7	R8	R9	R10	R11	R12	R13	R14	R15
92,5	96,8	98,3	91,2	91,9	95,2	91,1	81,1	58,5	91,2	91,4	78,0	93,8	98,9	88,8

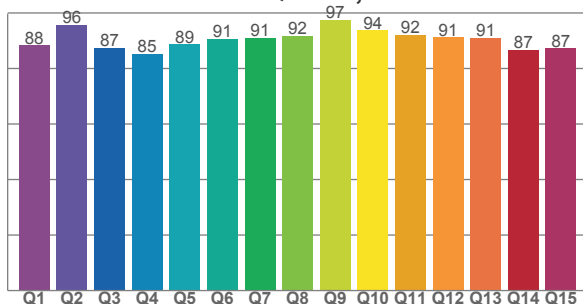
TM30 C values, 16 binned values out of total of 99 C values

C1	C2	C3	C4	C5	C6	C7	C8	C9	C10	C11	C12	C13	C14	C15	C16
89,5	91,3	89,9	93,8	92,7	96,2	91,7	95,6	90,9	85,1	86,2	89,4	91,9	87,4	88,2	85,1

CQS Q values

Q1	Q2	Q3	Q4	Q5	Q6	Q7	Q8	Q9	Q10	Q11	Q12	Q13	Q14	Q15
88,3	95,7	87,4	85,2	88,6	90,7	90,9	91,7	97,4	93,7	92,0	91,1	91,1	86,6	87,2

CQS: 89,9



Color parameters

Color temperature	Color rendering index	Red component	Color fidelity	Color gamut	Color quality scale	Color coordinate cie 1931	Color coordinate cie 1931	Color coordinate	Color coordinate	Color deviation from black body
CCT	CRI	CRI R9	TM30 Rf	TM30 Rg	CQS	x	y	u	v	Δuv
3027 K	92,3	58,5	90,4	98,1	89,9	0,434	0,400	0,250	0,346	-0,0011

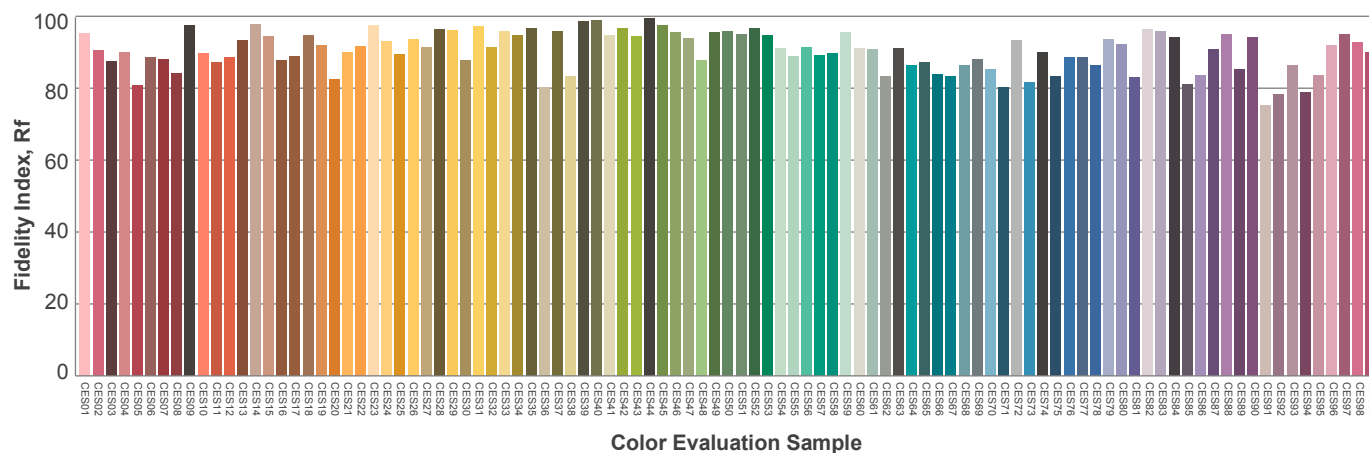
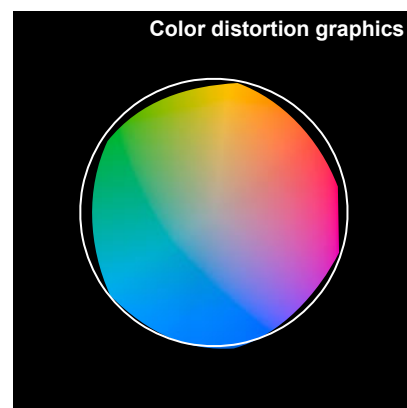
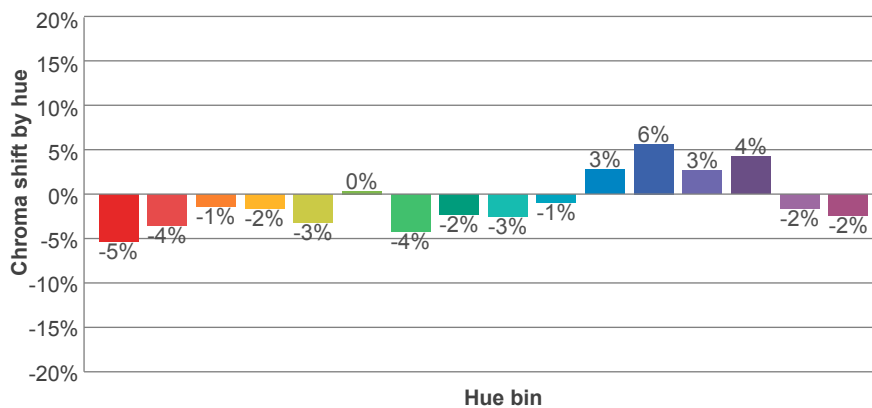
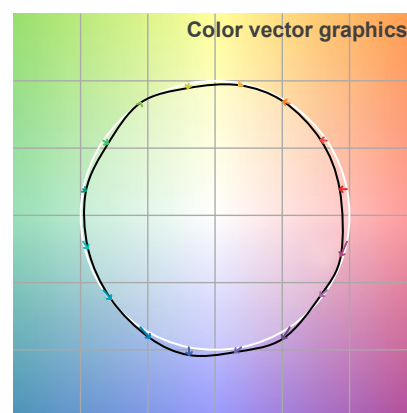
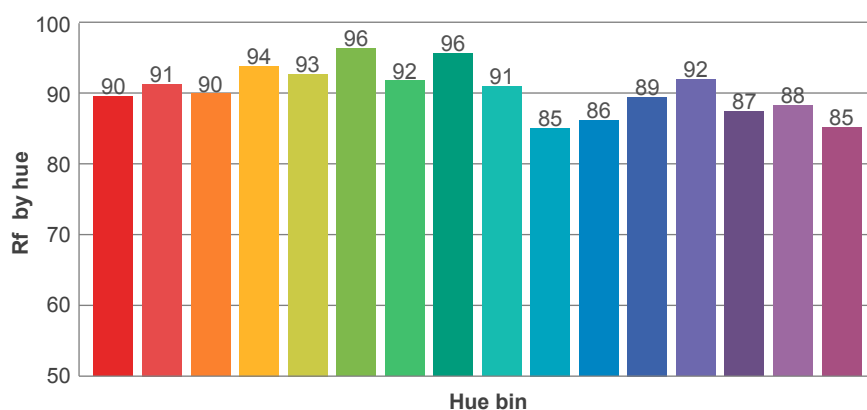
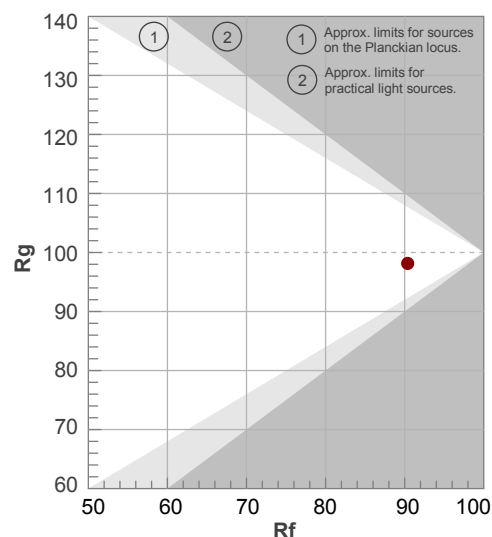
Rf 90,4

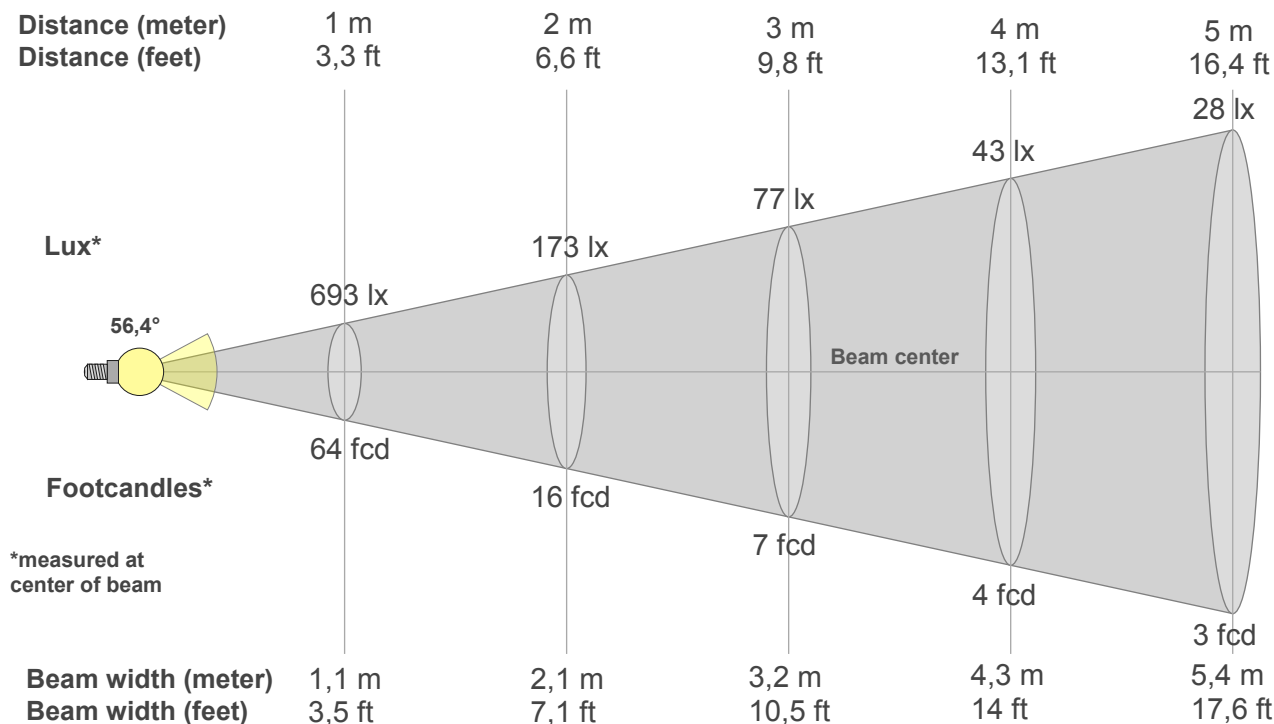
Fidelity index Rf

Rg 98,1

Gamut index Rg

Hue Bin	R _f	Graphic shifts (%)	
		Chroma	Hue
1	90	-5%	1%
2	91	-4%	3%
3	90	-1%	5%
4	94	-2%	2%
5	93	-3%	2%
6	96	0%	-1%
7	92	-4%	0%
8	96	-2%	1%
9	91	-3%	6%
10	85	-1%	9%
11	86	3%	10%
12	89	6%	1%
13	92	3%	-5%
14	87	4%	-9%
15	88	-2%	-6%
16	85	-2%	-11%





Beam intensities from 1-20m

1m	2m	3m	4m	5m	6m	7m	8m	9m	10m	11m	12m	13m	14m	15m	16m	17m	18m	19m	20m
3,3ft	6,6ft	9,8ft	13,1ft	16,4ft	19,7ft	23ft	26,2ft	29,5ft	32,8ft	36,1ft	39,4ft	42,7ft	45,9ft	49,2ft	52,5ft	55,8ft	59,1ft	62,3ft	65,6ft
693lx	173lx	77lx	43lx	28lx	19lx	14lx	11lx	9lx	7lx	6lx	5lx	4lx	4lx	3lx	3lx	2lx	2lx	2lx	2lx
64,4fcd	16,1fcd	7,2fcd	4fcd	2,6fcd	1,8fcd	1,3fcd	1fcd	0,8fcd	0,6fcd	0,5fcd	0,4fcd	0,4fcd	0,3fcd	0,3fcd	0,3fcd	0,2fcd	0,2fcd	0,2fcd	0,2fcd

Intensities in 0° c-plane

0°	2°	4°	6°	8°	10°	12°	14°	16°	18°	20°	22°	24°	26°	28°	30°	32°	34°	36°	38°
693	688	677	661	635	603	562	512	453	388	319	256	202	159	126	101	82	69	60	54
100%	99%	98%	95%	92%	87%	81%	74%	65%	56%	46%	37%	29%	23%	18%	15%	12%	10%	9%	8%

Intensities in 90° c-plane

0°	2°	4°	6°	8°	10°	12°	14°	16°	18°	20°	22°	24°	26°	28°	30°	32°	34°	36°	38°
693	694	694	696	697	698	700	702	704	706	709	710	711	711	710	706	696	680	657	625
100%	100%	100%	100%	101%	101%	101%	101%	102%	102%	102%	102%	103%	103%	102%	102%	100%	98%	95%	90%

Intensities in 180° c-plane

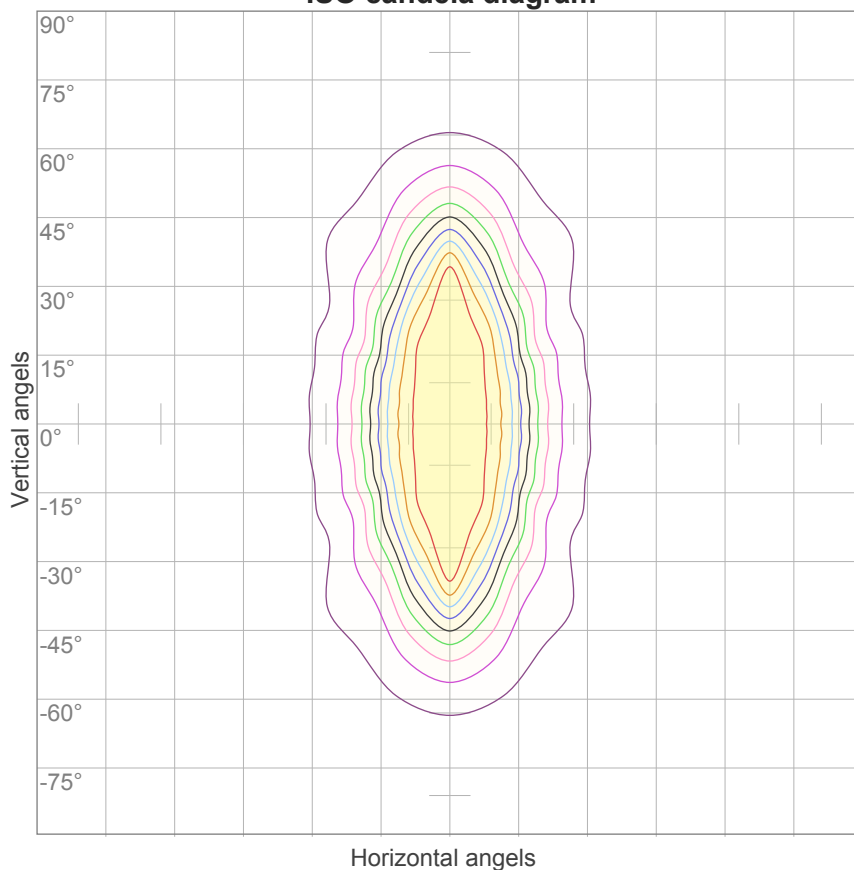
0°	2°	4°	6°	8°	10°	12°	14°	16°	18°	20°	22°	24°	26°	28°	30°	32°	34°	36°	38°
693	688	677	661	635	603	562	512	453	388	319	256	202	159	126	101	82	69	60	54
100%	99%	98%	95%	92%	87%	81%	74%	65%	56%	46%	37%	29%	23%	18%	15%	12%	10%	9%	8%

Intensities in 270° c-plane

0°	2°	4°	6°	8°	10°	12°	14°	16°	18°	20°	22°	24°	26°	28°	30°	32°	34°	36°	38°
693	694	694	696	697	698	700	702	704	706	709	710	711	711	710	706	696	680	657	625
100%	100%	100%	100%	101%	101%	101%	101%	102%	102%	102%	102%	103%	103%	102%	102%	100%	98%	95%	90%

Beam angle 50%	Field angle 10%	Cutoff angle 2,5%	Intensity ratio in 120° cone	Intensity ratio in 90° cone
56,4°	93,8°	173,3°	86,4%	71,7%

ISO candela diagram



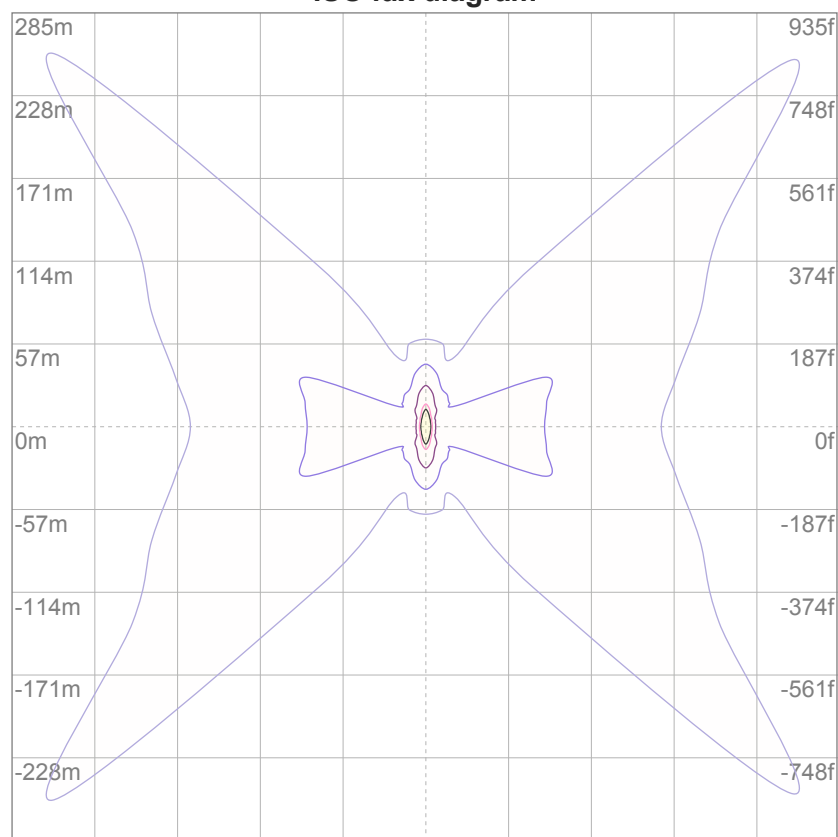
10%	69 cd
20%	139 cd
30%	208 cd
40%	277 cd
50%	347 cd
60%	416 cd
70%	485 cd
80%	555 cd
90%	624 cd

Conditions:

Number of c-planes: 16

Candela at center: 693 cd

ISO lux diagram



3%	0,208 lx
5%	0,347 lx
10%	0,693 lx
30%	2,08 lx
50%	3,47 lx

Conditions:

Number of c-planes: 16

Lux at center: 6,93 lx

*Lux distribution on a surface
when lamp is mounted at 10
meters from the surface.*

Glare Evaluation According to UGR

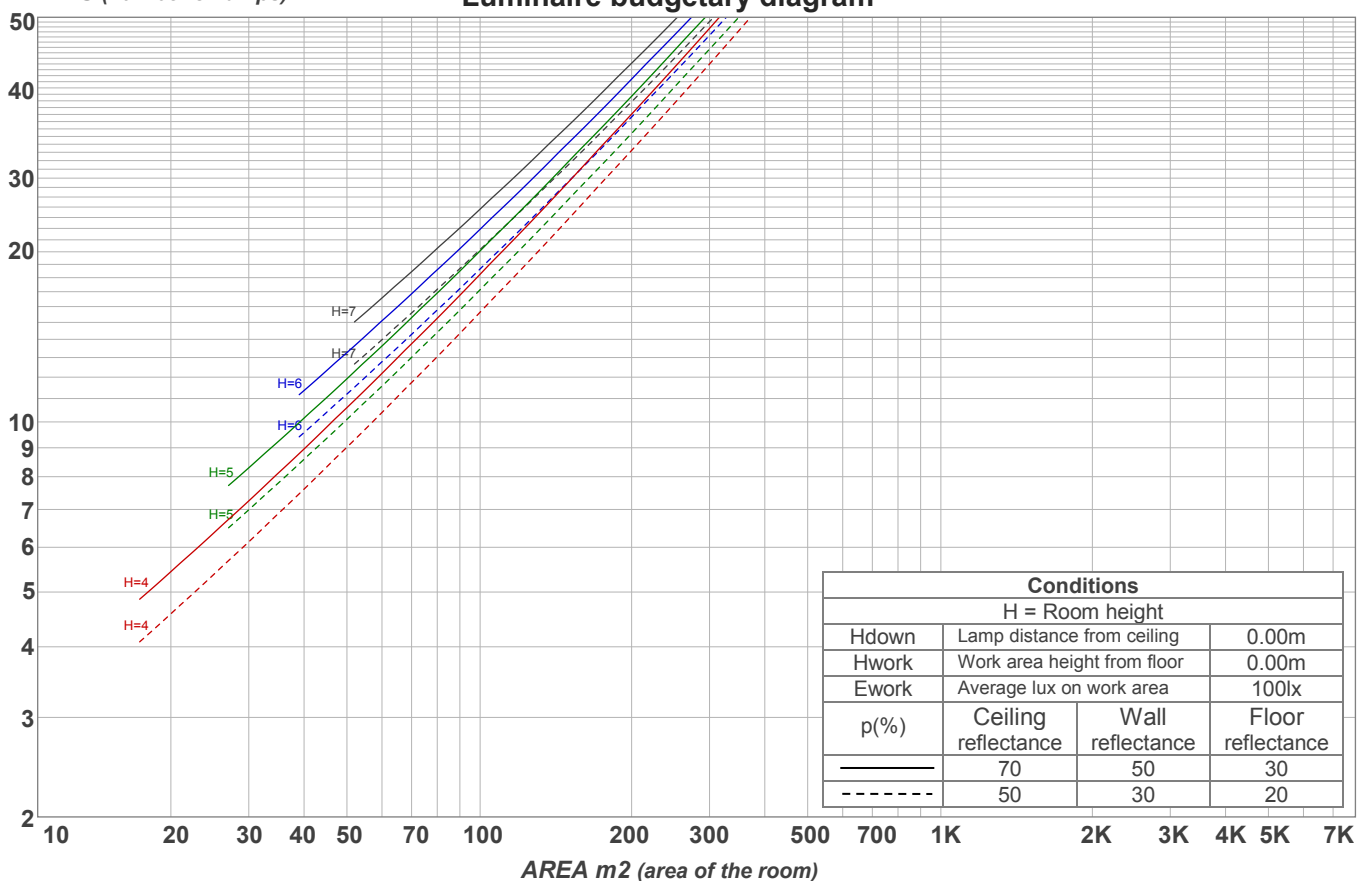
p Ceiling		70	70	50	50	30	70	70	50	50	30
p Walls		50	30	50	30	30	50	30	50	30	30
p Floor		20	20	20	20	20	20	20	20	20	20
Room size X Y		Viewing direction at right angles to lamp axis					Viewing direction parallel to lamp axis				
2H	2H	14,4	15,4	14,6	15,7	15,9	23,3	24,3	23,5	24,6	24,8
	3H	16,3	17,4	16,7	17,6	17,8	24,0	25,1	24,4	25,3	25,5
	4H	17,6	18,6	18,0	18,9	19,1	24,3	25,3	24,7	25,6	25,8
	6H	19,5	20,4	19,8	20,7	21,0	24,6	25,5	24,9	25,8	26,1
	8H	20,2	21,0	20,5	21,3	21,7	24,7	25,5	25,0	25,8	26,2
	12H	20,5	21,3	20,8	21,6	22,1	24,7	25,5	25,0	25,8	26,3
4H	2H	15,2	16,2	15,6	16,5	16,7	23,1	24,1	23,5	24,3	24,6
	3H	17,4	18,2	17,8	18,6	19,0	24,0	24,8	24,4	25,2	25,6
	4H	18,8	19,6	19,2	20,0	20,5	24,3	25,1	24,7	25,5	26,0
	6H	20,8	21,6	21,3	21,9	22,3	24,6	25,4	25,1	25,7	26,1
	8H	21,6	22,3	22,1	22,6	23,0	24,7	25,4	25,2	25,8	26,1
	12H	22,0	22,5	22,5	23,0	23,4	24,8	25,4	25,3	25,8	26,2
8H	4H	19,2	19,9	19,7	20,3	20,6	24,3	25,0	24,8	25,3	25,7
	6H	21,5	22,0	22,0	22,5	23,0	24,7	25,2	25,2	25,7	26,2
	8H	22,5	22,9	23,0	23,5	24,1	24,9	25,3	25,4	25,8	26,5
	12H	23,0	23,4	23,6	23,9	24,5	25,0	25,4	25,6	25,9	26,5
12H	4H	19,3	19,8	19,8	20,3	20,7	24,3	24,9	24,8	25,3	25,7
	6H	21,7	22,1	22,2	22,6	23,3	24,8	25,2	25,3	25,7	26,4
	8H	22,7	23,1	23,3	23,6	24,2	25,0	25,3	25,5	25,8	26,4
Variation of the observer position for the luminaire distance S											
S = 1.0H		0,1 / -0,1					1,1 / -1,1				
S = 1.5H		0,1 / -0,1					2,5 / -2,1				
S = 2.0H		0,2 / -0,2					3,8 / -2,9				
Standard table		n/a					n/a				
Correction summand		n/a					n/a				
Corrected glare indices referring to 830 lm total luminous flux											

Coefficients of Utilization

Ceiling reflectance	80				70				50			30			10			0
Wall reflectance	70	50	30	10	70	50	30	10	50	30	10	50	30	10	50	30	10	0
Floor reflectance	20	20	20	20	20	20	20	20	20	20	20	20	20	20	20	20	20	0
RCR	(RCR: Room Cavity Ratio) Room Values are expressed as percentage of Lumens delivered to the task surface																	
0	119	119	119	119	116	116	116	116	111	111	111	106	106	106	102	102	102	100
1	110	106	102	99	108	104	100	97	100	97	94	96	93	91	92	90	89	87
2	102	95	90	85	100	93	88	84	90	86	82	87	83	80	84	81	78	76
3	95	86	79	74	93	85	78	73	82	77	72	79	75	71	77	73	70	68
4	89	79	71	66	87	78	71	65	75	69	64	73	68	64	71	66	63	61
5	83	72	65	59	81	71	64	59	69	63	58	67	62	58	66	61	57	55
6	78	67	59	54	76	66	59	53	64	58	53	63	57	53	61	56	52	50
7	73	62	54	49	72	61	54	49	60	53	49	58	53	48	57	52	48	46
8	69	58	50	45	68	57	50	45	56	49	45	55	49	45	54	48	44	43
9	66	54	47	42	64	53	47	42	52	46	42	51	46	42	50	45	41	40
10	62	51	44	39	61	50	44	39	49	43	39	48	43	39	48	42	39	37

LAMPS (number of lamps)

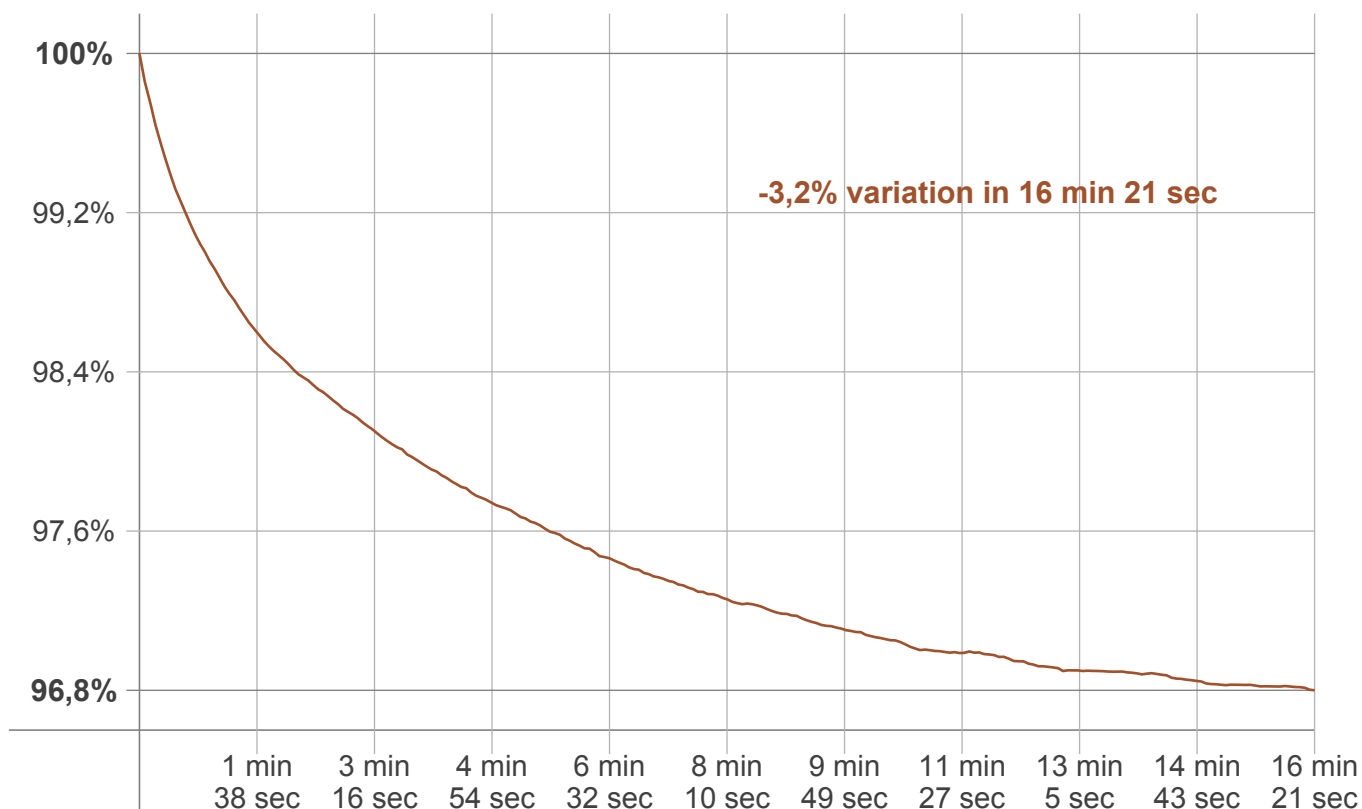
Luminaire budgetary diagram



Zonal Lumen Summary

0°-10°	10°-20°	20°-30°	30°-40°	40°-50°	50°-60°	60°-70°	70°-80°	80°-90°
64,1 lm	162 lm	176 lm	138 lm	102 lm	74,5 lm	51,3 lm	37,0 lm	24,8 lm
90°-100°	100°-110°	110°-120°	120°-130°	130°-140°	140°-150°	150°-160°	160°-170°	170°-180°
0,033 lm	0,000 lm	0,000 lm	0,000 lm	0,000 lm	0,000 lm	0,000 lm	0,000 lm	0,000 lm

Warmup curve



Warmup result

Warmup time:	16 min 21 sec
Warmup variation	-3,2%

Warmup conditions

Stable period:	15 min
Stable change max:	2,0%
Minimum time:	15 min

Color temperature change

CCT start	CCT change	CCT end
3031 K	-4 K	3027 K

Output change

Output start	Output change	Output end
854 lm	-24 lm	830 lm