

### Light efficiency:

**71 Lumen/Watt**

### Light quality:

**CRI: 36,0**

### Color temperature:

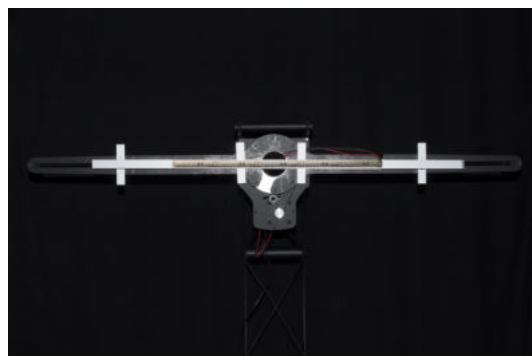
**12104 K**

**Output: 609 lm**

**Peak: 383 cd**

**Power: 8,6 W**

**PF: 1,0**



### Product name:

**Defiant-0508-RGB-L6T**

### Item number:

**FLNP/L22A0508/RGB/L6T**

### Date and time:

**07.07.2020 12:32:26**

### Description:

**Rank: R2G2B4/RC2GA2BA5/A**

**Toleranzen:**

**Lumen +/-4%**

**Candela +/-2,5%**

**Colour Temp +/-35 K**

**CRI +/-0,7**

**Angular Resolution 1 Grad Step**

**Last Calibration 20.05.2020**

**Pruefer:**

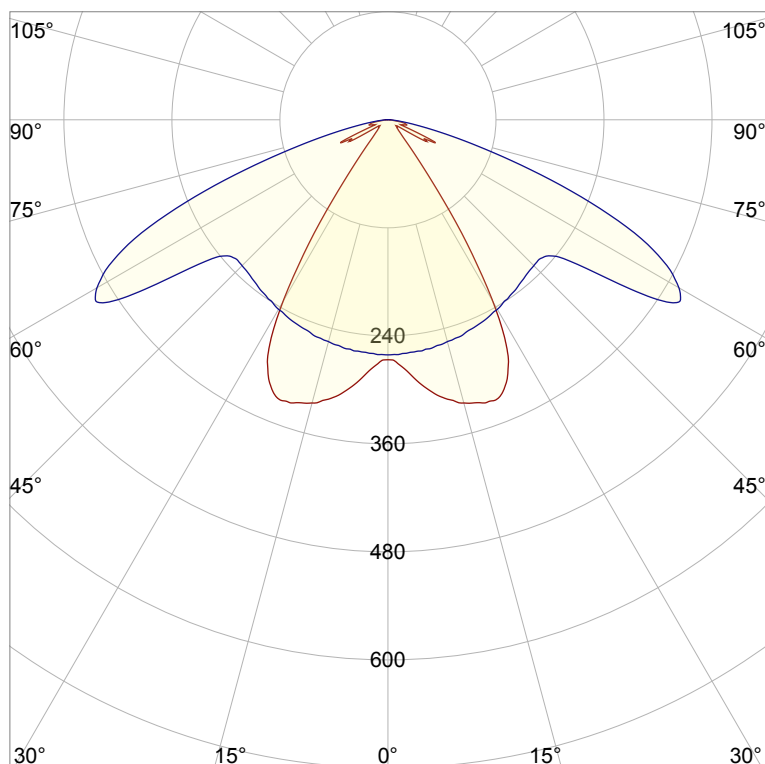
**Peter Ulrich**

**Pruefort:**

**Lichtlabor**

**Gaustrasse 13**

**55411 Bingen am Rhein**

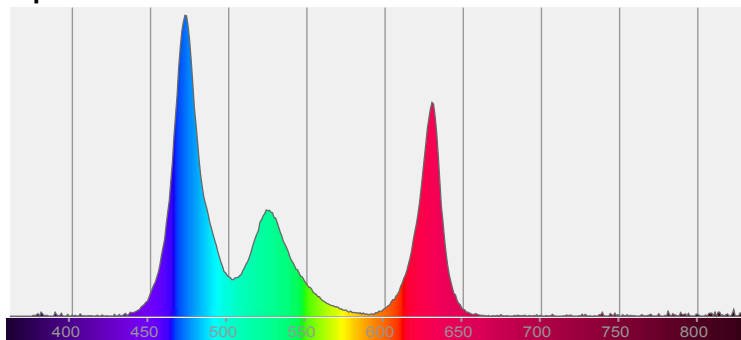


**CIE 1931**

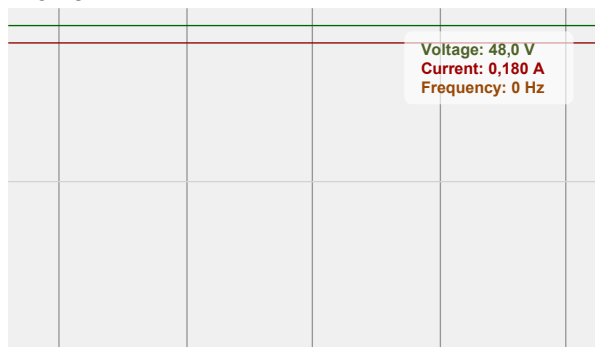
**x: 0,265**

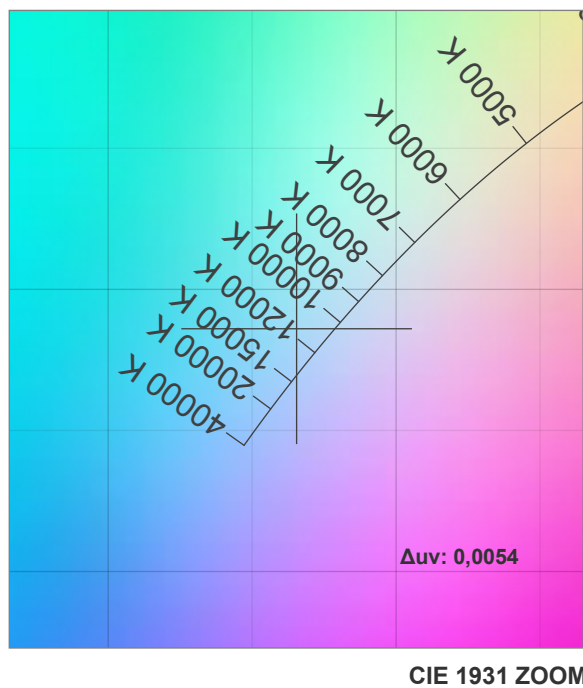
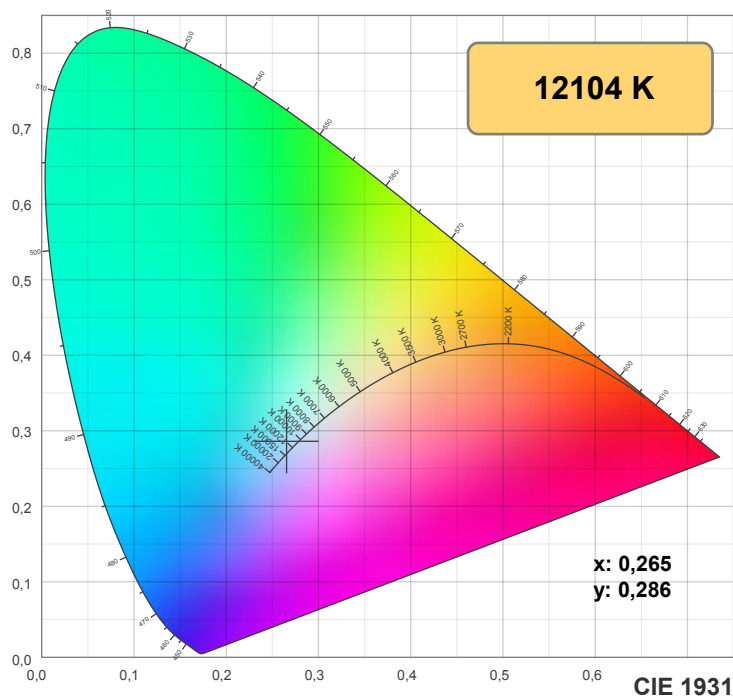
**y: 0,286**

### Spectra



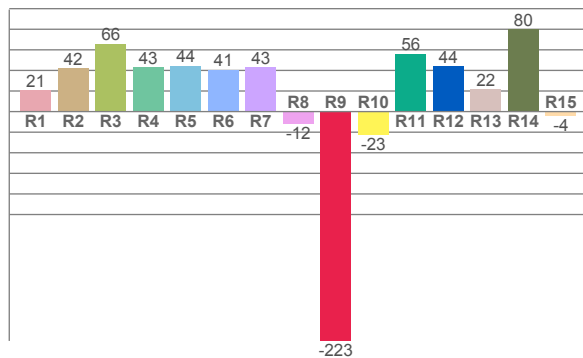
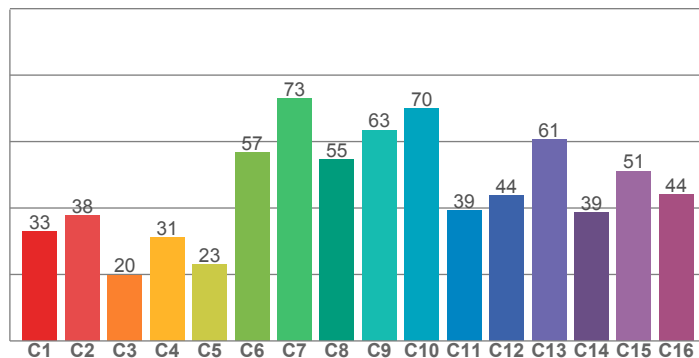
### Power





TM30: 44,8

CRI: 36,0 (R1-R8)



CRI R values, only R1-R8 are used to calculate final CRI value

R1	R2	R3	R4	R5	R6	R7	R8	R9	R10	R11	R12	R13	R14	R15
21,0	42,3	65,9	42,7	44,4	40,6	43,0	-12,3	-222,8	-22,9	56,2	43,9	21,9	79,7	-4,4

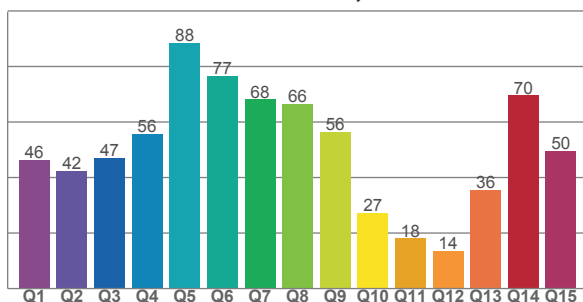
TM30 C values, 16 binned values out of total of 99 C values

C1	C2	C3	C4	C5	C6	C7	C8	C9	C10	C11	C12	C13	C14	C15	C16
32,9	37,7	19,9	31,0	23,0	56,7	72,9	54,5	63,5	69,9	39,3	43,9	60,6	38,6	51,1	44,0

CQS Q values

Q1	Q2	Q3	Q4	Q5	Q6	Q7	Q8	Q9	Q10	Q11	Q12	Q13	Q14	Q15
46,2	42,3	47,0	55,7	88,5	76,6	68,1	66,4	56,3	27,2	18,0	13,6	35,5	69,6	49,6

CQS: 46,0



## Color parameters

Color temperature	Color rendering index	Red component	Color fidelity	Color gamut	Color quality scale	Color coordinate cie 1931	Color coordinate cie 1931	Color coordinate	Color coordinate	Color deviation from black body
CCT	CRI	CRI R9	TM30 Rf	TM30 Rg	CQS	x	y	u	v	$\Delta uv$
12104 K	36,0	-222,8	44,8	87,5	46,0	0,265	0,286	0,180	0,291	0,0054

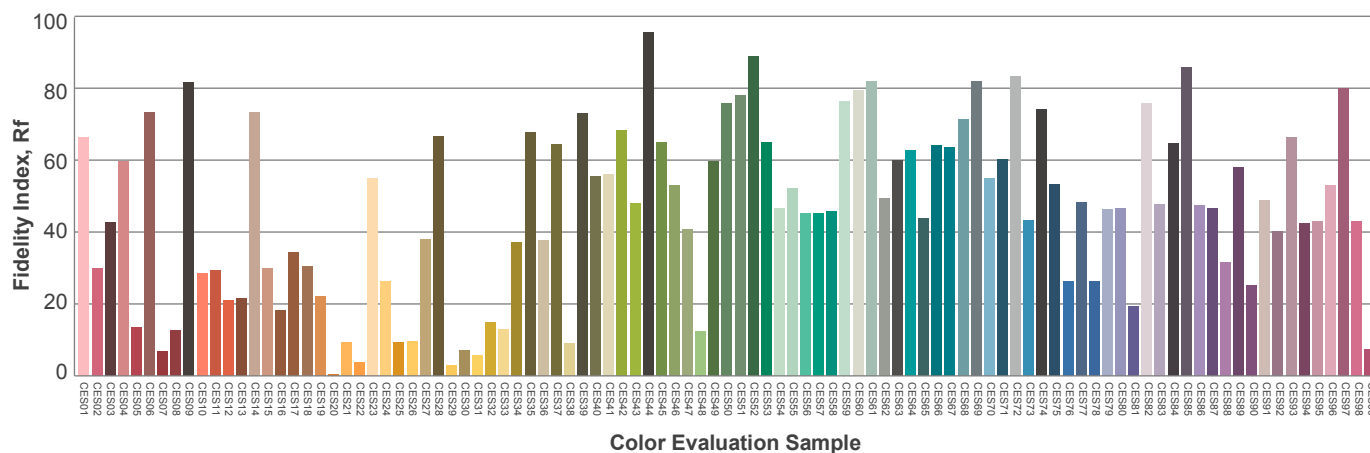
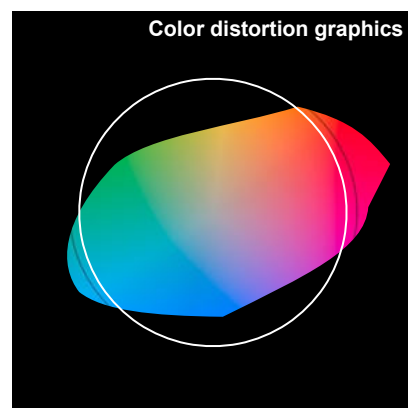
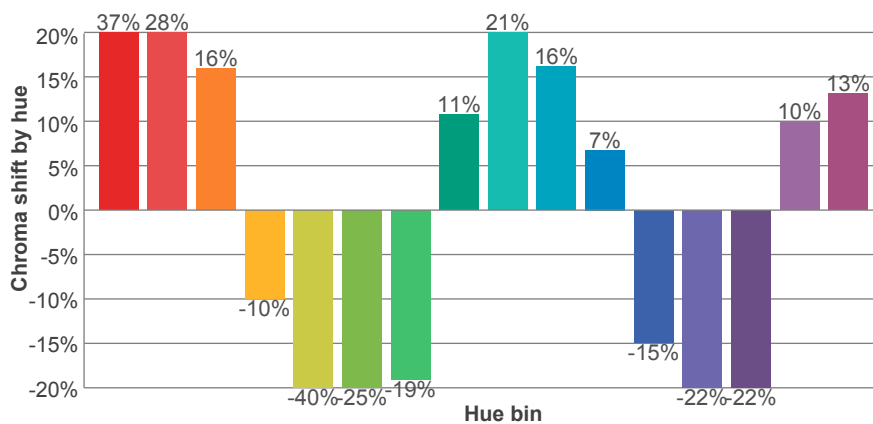
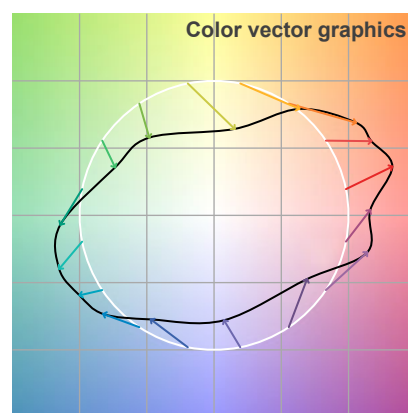
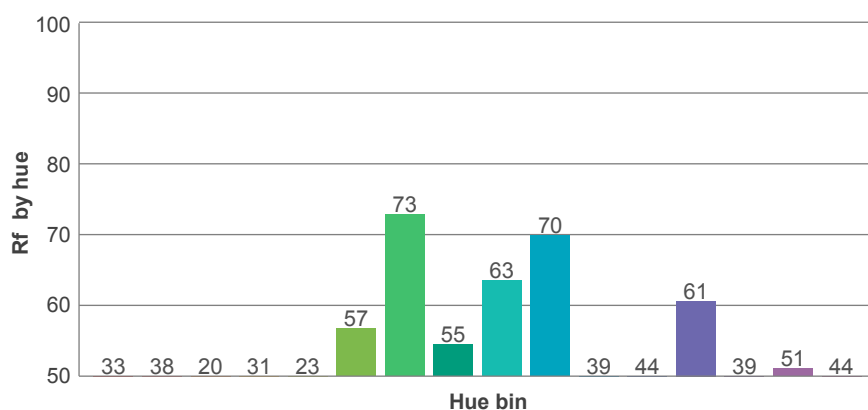
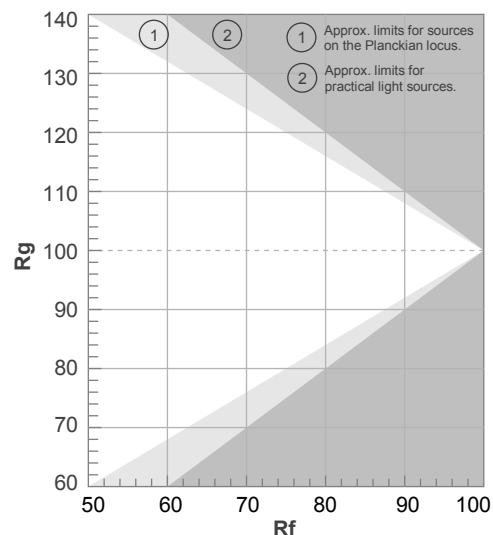
**Rf 44,8**

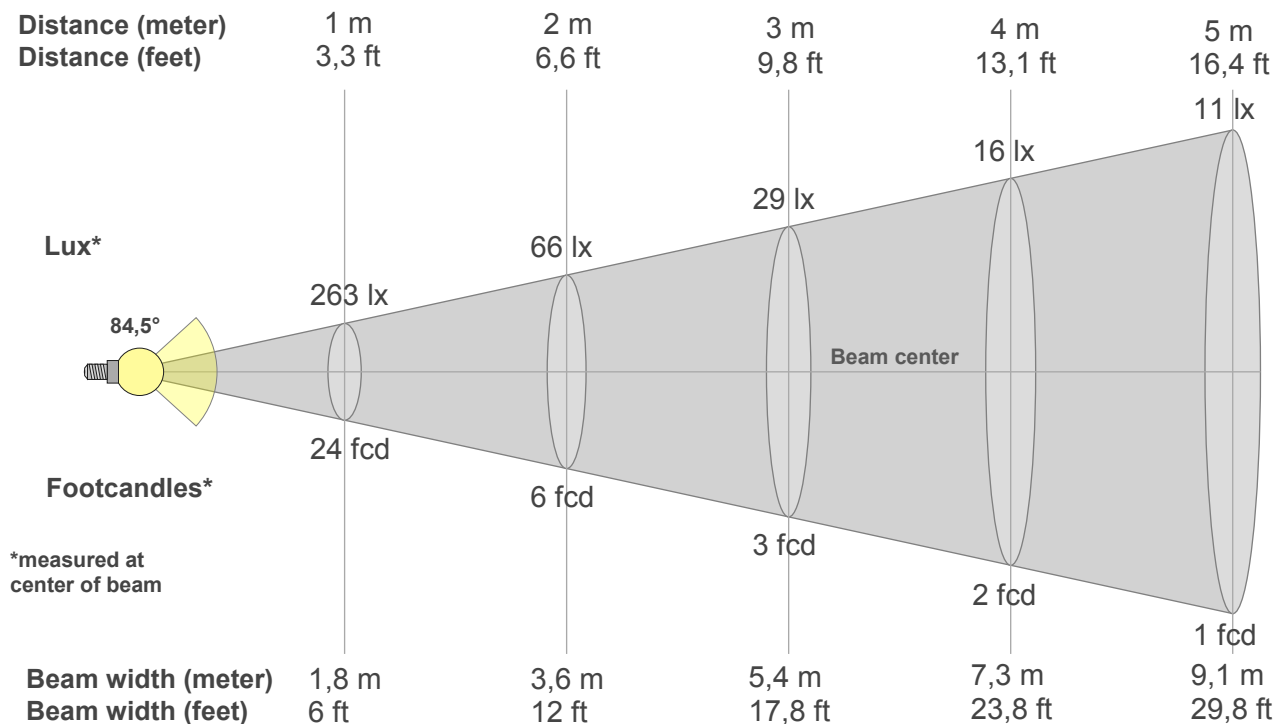
Fidelity index Rf

**Rg 87,5**

Gamut index Rg

Hue Bin	R <sub>f</sub>	Graphic shifts (%)	
		Chroma	Hue
1	33	37%	10%
2	38	28%	-19%
3	20	16%	-49%
4	31	-10%	-47%
5	23	-40%	-28%
6	57	-25%	8%
7	73	-19%	11%
8	55	11%	29%
9	63	21%	17%
10	70	16%	-6%
11	39	7%	-28%
12	44	-15%	-31%
13	61	-22%	-8%
14	39	-22%	31%
15	51	10%	40%
16	44	13%	27%





## Beam intensities from 1-20m

1m	2m	3m	4m	5m	6m	7m	8m	9m	10m	11m	12m	13m	14m	15m	16m	17m	18m	19m	20m
3,3ft	6,6ft	9,8ft	13,1ft	16,4ft	19,7ft	23ft	26,2ft	29,5ft	32,8ft	36,1ft	39,4ft	42,7ft	45,9ft	49,2ft	52,5ft	55,8ft	59,1ft	62,3ft	65,6ft
263lx	66lx	29lx	16lx	11lx	7lx	5lx	4lx	3lx	3lx	2lx	2lx	2lx	1lx	1lx	1lx	1lx	1lx	1lx	1lx
24,4fcd	6,1fcd	2,7fcd	1,5fcd	1fcd	0,7fcd	0,5fcd	0,4fcd	0,3fcd	0,2fcd	0,2fcd	0,2fcd	0,1fcd	0,1fcd	0,1fcd	0,1fcd	0,1fcd	0,1fcd	0,1fcd	0,1fcd

## Intensities in 0° c-plane

0°	5°	10°	15°	20°	25°	30°	35°	40°	45°	50°	55°	60°	65°	70°	75°	80°	85°	90°	95°
263	284	310	326	333	314	233	97	31	16	13	12	44	52	16	21	15	4	2	0
100%	108%	118%	124%	127%	120%	89%	37%	12%	6%	5%	5%	17%	20%	6%	8%	6%	1%	1%	0%

## Intensities in 90° c-plane

0°	5°	10°	15°	20°	25°	30°	35°	40°	45°	50°	55°	60°	65°	70°	75°	80°	85°	90°	95°
263	260	258	255	252	248	243	238	233	229	235	326	373	308	186	82	28	7	1	0
100%	99%	98%	97%	96%	94%	93%	90%	89%	87%	90%	124%	142%	117%	71%	31%	11%	3%	0%	0%

## Intensities in 180° c-plane

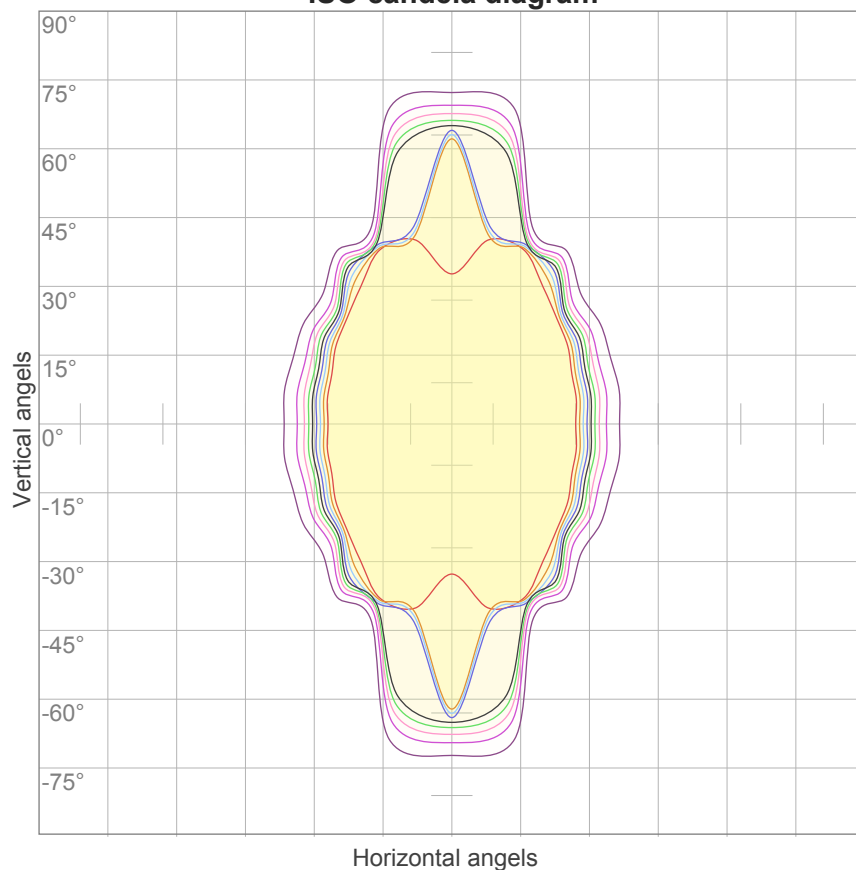
0°	5°	10°	15°	20°	25°	30°	35°	40°	45°	50°	55°	60°	65°	70°	75°	80°	85°	90°	95°
263	284	310	326	333	314	233	97	31	16	13	12	44	52	16	21	15	4	2	0
100%	108%	118%	124%	127%	120%	89%	37%	12%	6%	5%	5%	17%	20%	6%	8%	6%	1%	1%	0%

## Intensities in 270° c-plane

0°	5°	10°	15°	20°	25°	30°	35°	40°	45°	50°	55°	60°	65°	70°	75°	80°	85°	90°	95°
263	260	258	255	252	248	243	238	233	229	235	326	373	308	186	82	28	7	1	0
100%	99%	98%	97%	96%	94%	93%	90%	89%	87%	90%	124%	142%	117%	71%	31%	11%	3%	0%	0%

Beam angle 50%	Field angle 10%	Cutoff angle 2,5%	Intensity ratio in 120° cone	Intensity ratio in 90° cone
84,5°	130,9°	153,6°	85,6%	73,3%

### ISO candela diagram



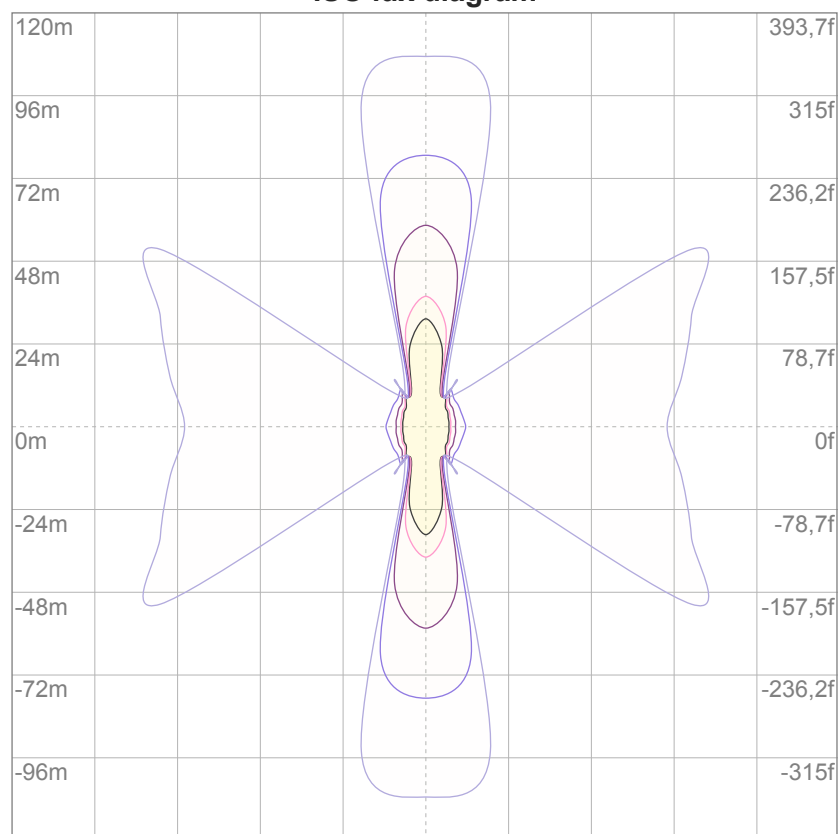
10%	26 cd
20%	53 cd
30%	79 cd
40%	105 cd
50%	131 cd
60%	158 cd
70%	184 cd
80%	210 cd
90%	236 cd

#### Conditions:

Number of c-planes: 16

Candela at center: 263 cd

### ISO lux diagram



3%	78,8m lx
5%	0,131 lx
10%	0,263 lx
30%	0,788 lx
50%	1,31 lx

#### Conditions:

Number of c-planes: 16

Lux at center: 2,63 lx

*Lux distribution on a surface when lamp is mounted at 10 meters from the surface.*

### Glare Evaluation According to UGR

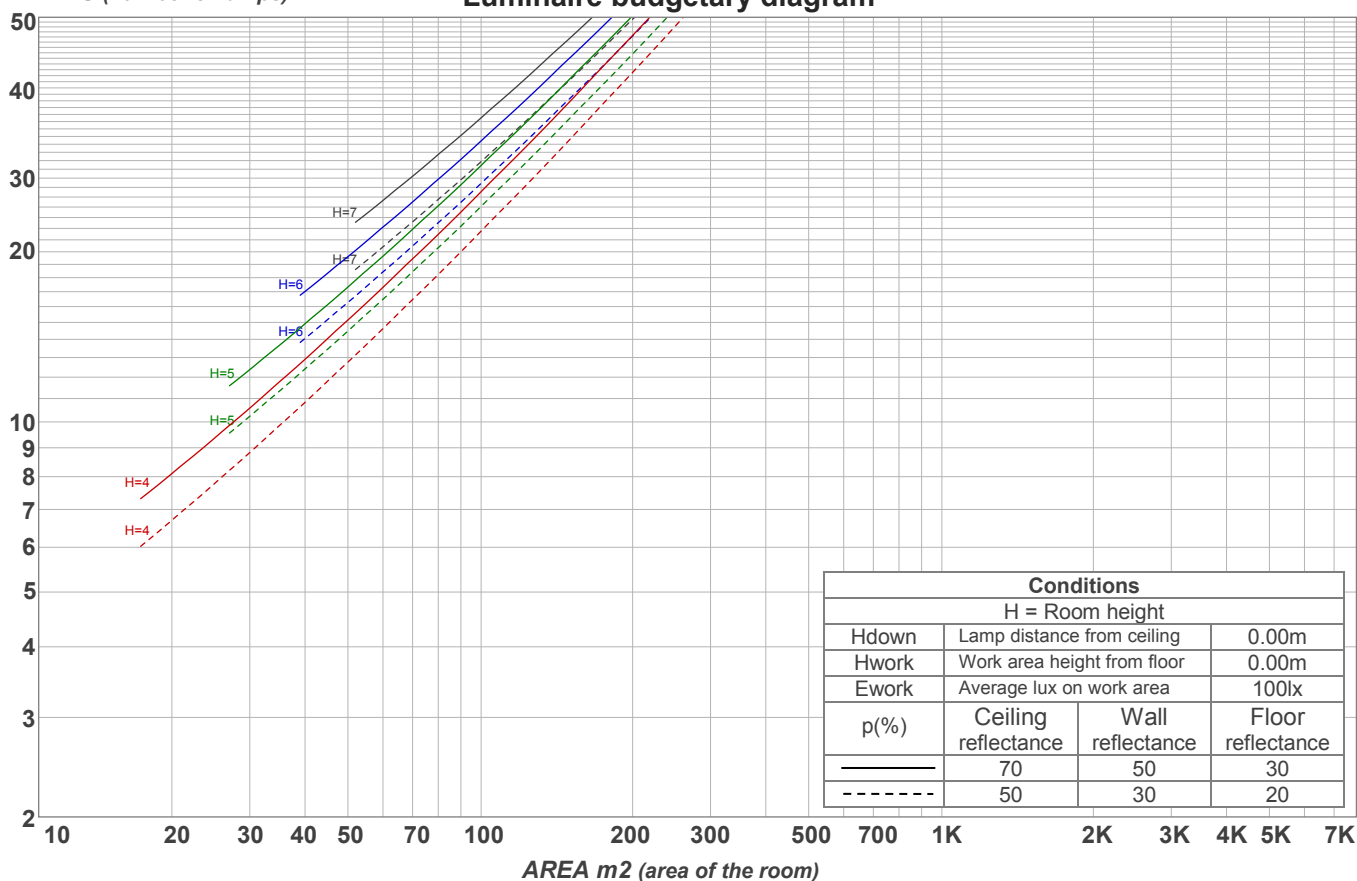
p Ceiling		70	70	50	50	30	70	70	50	50	30
p Walls		50	30	50	30	30	50	30	50	30	30
p Floor		20	20	20	20	20	20	20	20	20	20
Room size X      Y		Viewing direction at right angles to lamp axis					Viewing direction parallel to lamp axis				
2H	2H	13,5	14,6	13,7	14,8	15,0	25,5	26,5	25,7	26,8	27,0
	3H	15,5	16,6	15,9	16,8	17,0	27,7	28,8	28,1	29,1	29,3
	4H	16,0	17,0	16,4	17,3	17,5	28,2	29,2	28,6	29,5	29,7
	6H	16,7	17,6	17,0	17,9	18,2	28,4	29,3	28,7	29,5	29,9
	8H	16,7	17,6	17,1	17,9	18,3	28,3	29,2	28,7	29,5	29,9
	12H	16,7	17,6	17,1	17,9	18,4	28,3	29,2	28,7	29,5	29,9
4H	2H	13,8	14,8	14,2	15,1	15,3	25,1	26,2	25,5	26,4	26,7
	3H	16,1	17,0	16,5	17,3	17,7	27,6	28,4	27,9	28,7	29,2
	4H	16,7	17,5	17,1	17,9	18,4	27,9	28,7	28,4	29,1	29,6
	6H	17,5	18,3	18,0	18,6	19,0	28,1	28,8	28,6	29,2	29,6
	8H	17,7	18,3	18,2	18,7	19,1	28,1	28,8	28,6	29,1	29,5
	12H	17,7	18,2	18,2	18,6	19,1	28,1	28,6	28,6	29,1	29,5
8H	4H	16,9	17,6	17,4	17,9	18,3	27,8	28,5	28,3	28,9	29,2
	6H	17,9	18,4	18,4	18,9	19,4	28,0	28,5	28,5	29,0	29,5
	8H	18,2	18,6	18,7	19,1	19,7	28,0	28,5	28,6	29,0	29,6
	12H	18,2	18,6	18,8	19,1	19,7	28,0	28,4	28,6	28,9	29,5
12H	4H	16,9	17,4	17,4	17,8	18,3	27,8	28,3	28,3	28,7	29,2
	6H	18,0	18,4	18,5	18,9	19,6	28,0	28,4	28,5	28,9	29,6
	8H	18,2	18,6	18,8	19,1	19,7	28,0	28,4	28,6	28,9	29,5
Variation of the observer position for the luminaire distance S											
S = 1.0H		0,4 / -1,0					1,3 / -2,0				
S = 1.5H		2,8 / -1,7					2,7 / -5,3				
S = 2.0H		2,5 / -1,9					4,3 / -8,0				
Standard table		n/a					n/a				
Correction summand		n/a					n/a				
Corrected glare indices referring to 609 lm total luminous flux											

## Coefficients of Utilization

Ceiling reflectance	80				70				50			30			10			0
Wall reflectance	70	50	30	10	70	50	30	10	50	30	10	50	30	10	50	30	10	0
Floor reflectance	20	20	20	20	20	20	20	20	20	20	20	20	20	20	20	20	20	0
RCR	(RCR: Room Cavity Ratio) Room Values are expressed as percentage of Lumens delivered to the task surface																	
0	119	119	119	119	116	116	116	116	111	111	111	106	106	106	102	102	102	100
1	110	106	103	99	108	104	101	98	100	97	95	96	94	92	93	91	89	87
2	102	95	89	84	100	93	88	83	90	85	81	87	83	80	84	81	78	76
3	95	85	78	73	92	84	77	72	81	75	71	78	74	70	76	72	69	67
4	88	77	70	64	86	76	69	63	74	67	63	71	66	62	69	65	61	59
5	82	70	62	57	80	69	62	56	67	61	56	65	60	55	64	59	55	53
6	76	64	56	51	74	63	56	50	62	55	50	60	54	50	59	53	49	47
7	71	59	51	46	70	58	51	46	57	50	45	56	50	45	54	49	45	43
8	67	55	47	42	65	54	47	42	53	46	41	51	45	41	50	45	41	39
9	63	51	43	38	61	50	43	38	49	42	38	48	42	38	47	41	37	36
10	59	47	40	35	58	47	40	35	46	39	35	45	39	35	44	38	35	33

LAMPS (number of lamps)

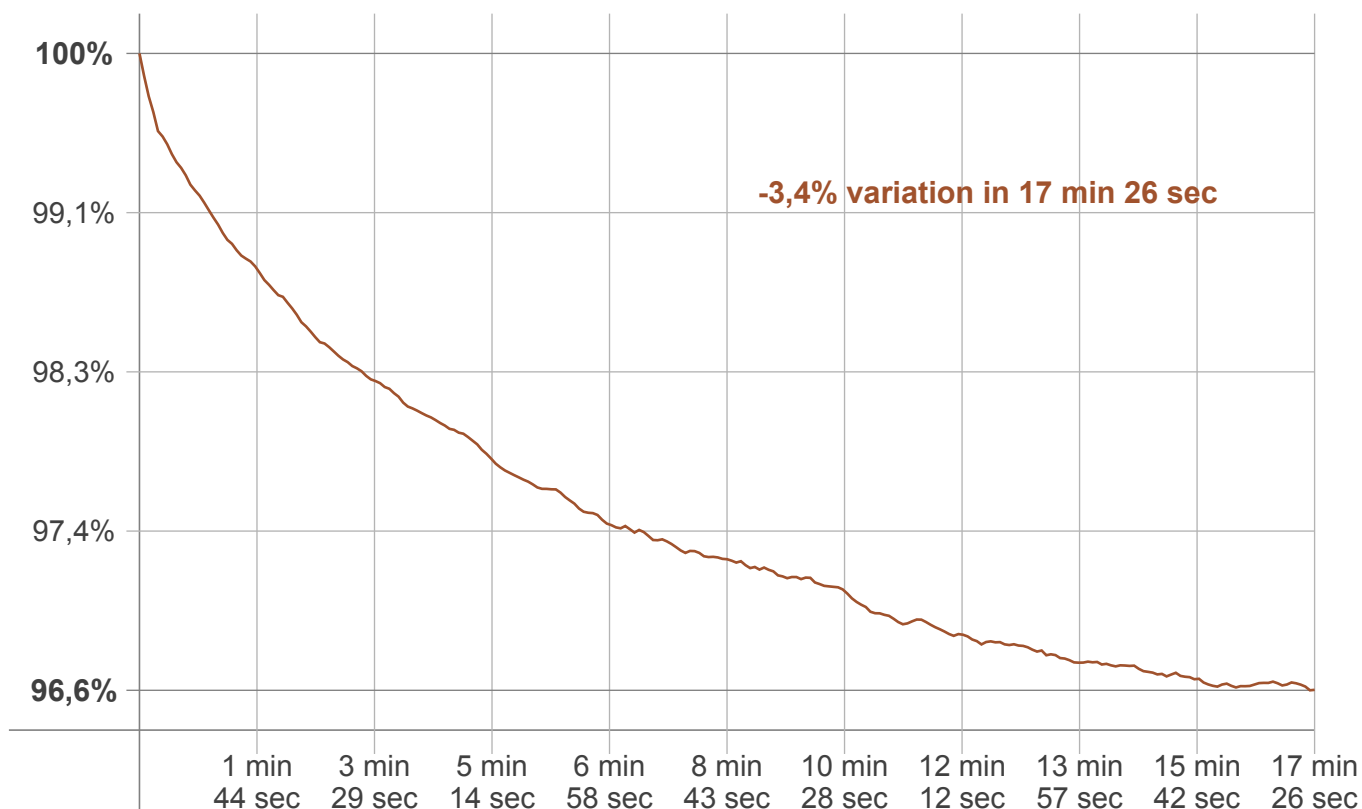
## Luminaire budgetary diagram



## Zonal Lumen Summary

0°-10°	10°-20°	20°-30°	30°-40°	40°-50°	50°-60°	60°-70°	70°-80°	80°-90°
26,6 lm	85,9 lm	143 lm	141 lm	79,4 lm	45,7 lm	55,8 lm	24,7 lm	7,38 lm
90°-100°	100°-110°	110°-120°	120°-130°	130°-140°	140°-150°	150°-160°	160°-170°	170°-180°
0,011 lm	0,000 lm	0,000 lm	0,000 lm	0,000 lm	0,000 lm	0,000 lm	0,000 lm	0,000 lm

### Warmup curve



### Warmup result

Warmup time:	17 min 26 sec
Warmup variation	-3,4%

### Warmup conditions

Stable period:	15 min
Stable change max:	2,0%
Minimum time:	15 min

### Color temperature change

CCT start	CCT change	CCT end
11528 K	+576 K	12104 K

### Output change

Output start	Output change	Output end
628 lm	-18 lm	609 lm