

#### Light efficiency:

**124 Lumen/Watt**

#### Light quality:

**CRI: 83,5**

#### Color temperature:

**4074 K**

**Output: 1012 lm**

**Peak: 346 cd**

**Power: 8,2 W**

**PF: 1,0**



#### Product name:

**Pegasus-3-Gold-0508-840-CFT**

#### Item number:

**FLNP-L-16A-0508-840-CFT**

#### Date and time:

**23.02.2021 09:24:30**

#### Description:

**Rank: S15ZT**

**Toleranzen:**

**Lumen +/-4%**

**Candela +/-2,5%**

**Colour Temp +/-35 Grad K**

**CRI +/-0,7**

**Angular Resolution 1 Grad step**

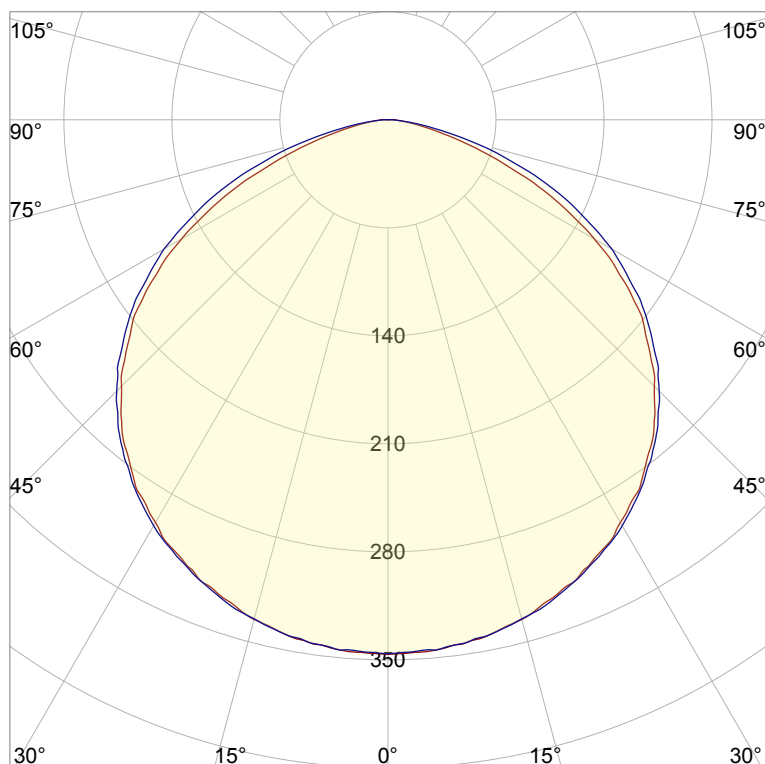
**Last Calibration 20-05-2020**

**Pruefer: Peter Ulrich**

**Pruefort: Lichtlabor**

**Gaustrasse13-15**

**55411 Bingen am Rhein**

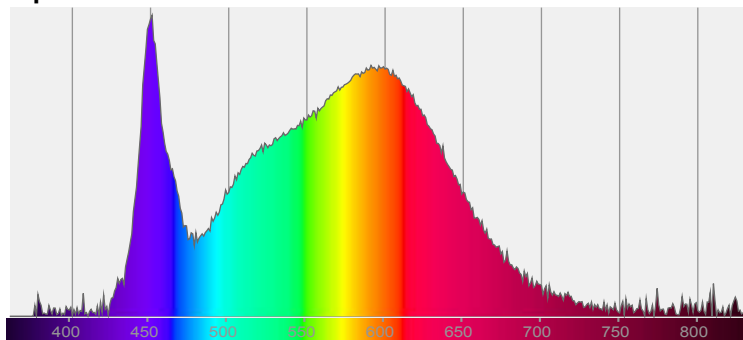


**CIE 1931**

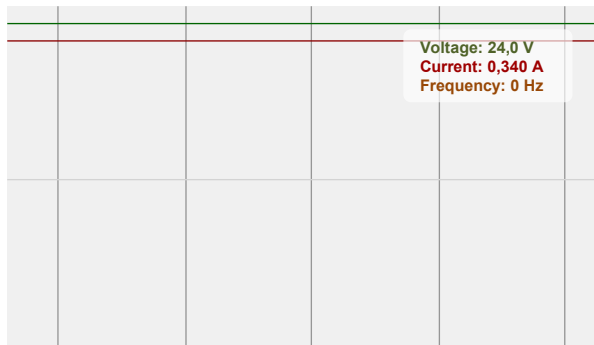
**x: 0,378**

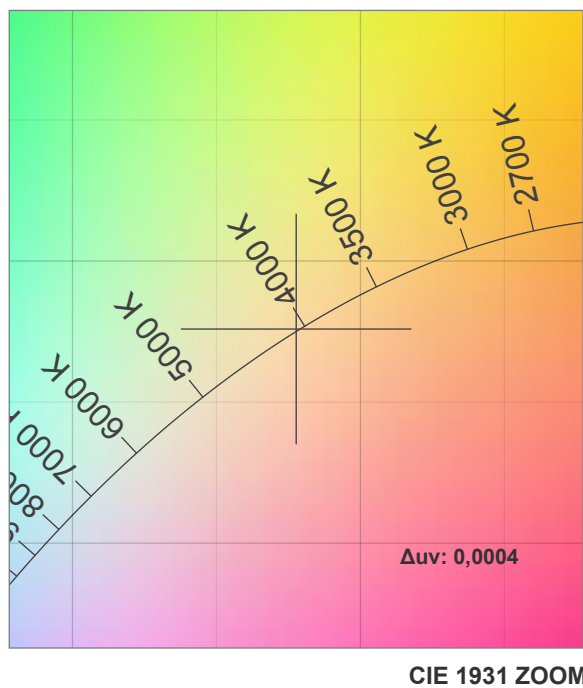
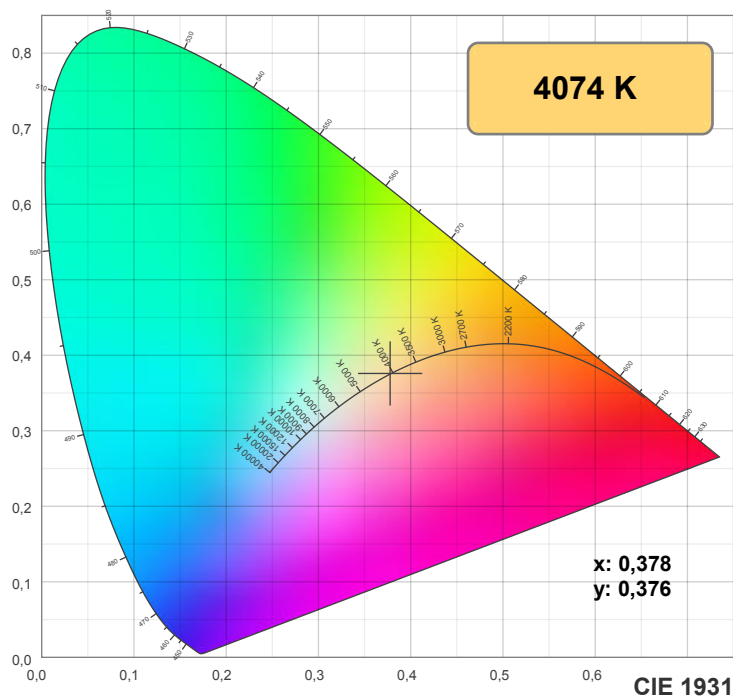
**y: 0,376**

#### Spectra

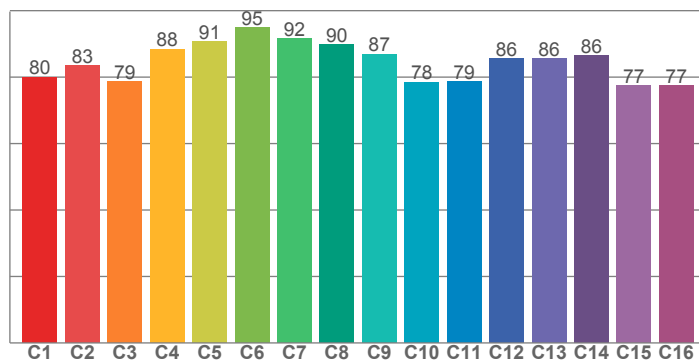


#### Power

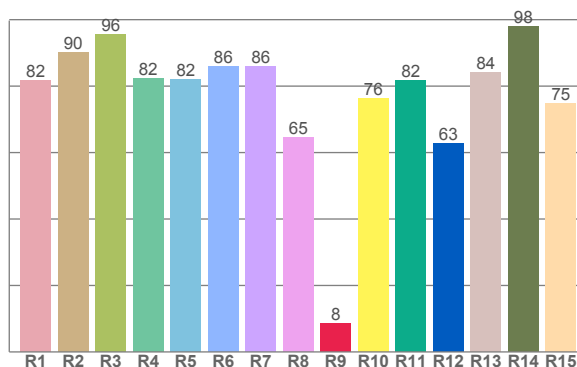




TM30: 84,4



CRI: 83,5 (R1-R8)



CRI R values, only R1-R8 are used to calculate final CRI value

R1	R2	R3	R4	R5	R6	R7	R8	R9	R10	R11	R12	R13	R14	R15
81,8	90,0	95,6	82,4	82,0	86,0	85,9	64,6	8,4	76,3	81,8	62,8	84,0	97,9	74,9

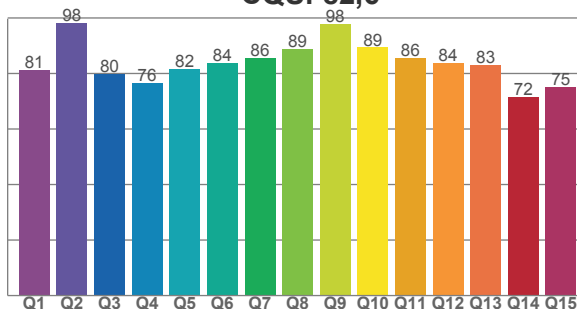
TM30 C values, 16 binned values out of total of 99 C values

C1	C2	C3	C4	C5	C6	C7	C8	C9	C10	C11	C12	C13	C14	C15	C16
80,0	83,5	78,7	88,5	90,6	94,8	91,7	89,8	86,9	78,5	78,6	85,5	85,6	86,4	77,5	77,5

CQS Q values

Q1	Q2	Q3	Q4	Q5	Q6	Q7	Q8	Q9	Q10	Q11	Q12	Q13	Q14	Q15
81,1	98,2	79,8	76,5	81,6	83,6	85,5	88,9	97,7	89,3	85,6	83,9	83,1	71,6	75,1

CQS: 82,6



## Color parameters

Color temperature	Color rendering index	Red component	Color fidelity	Color gamut	Color quality scale	Color coordinate cie 1931	Color coordinate cie 1931	Color coordinate	Color coordinate	Color deviation from black body
CCT	CRI	CRI R9	TM30 Rf	TM30 Rg	CQS	x	y	u	v	Δuv
4074 K	83,5	8,4	84,4	95,2	82,6	0,378	0,376	0,224	0,334	0,0004

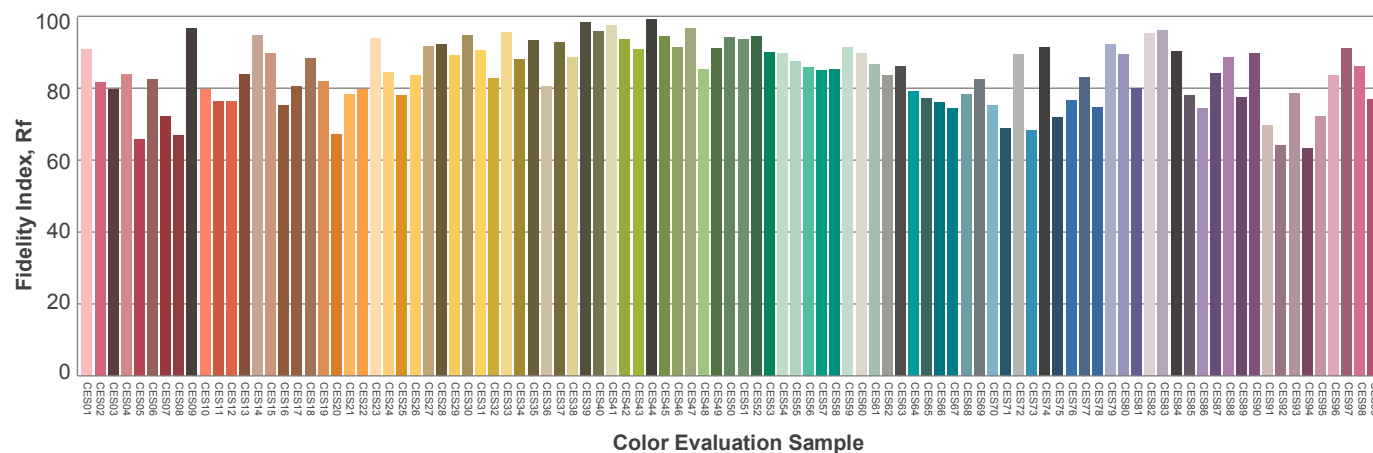
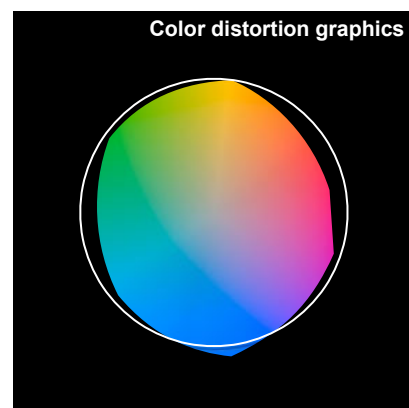
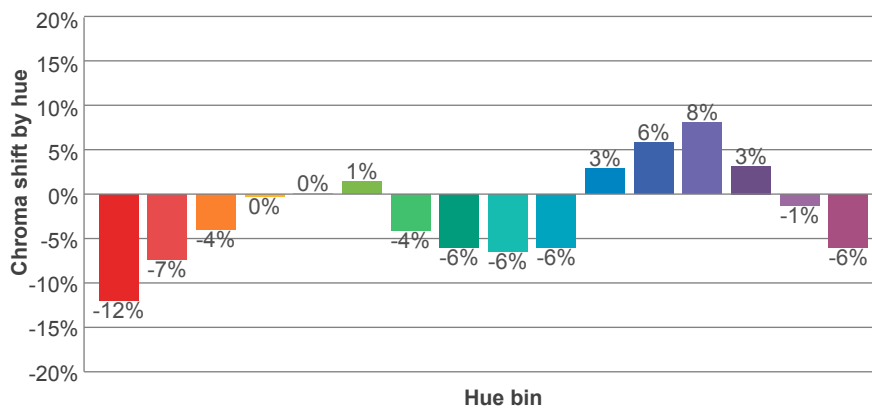
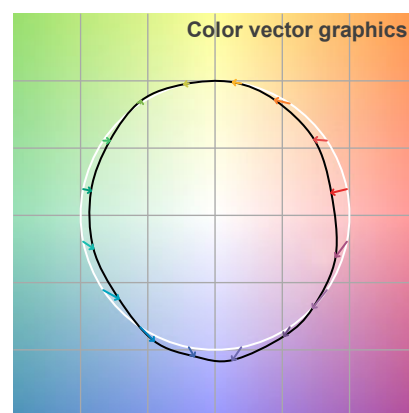
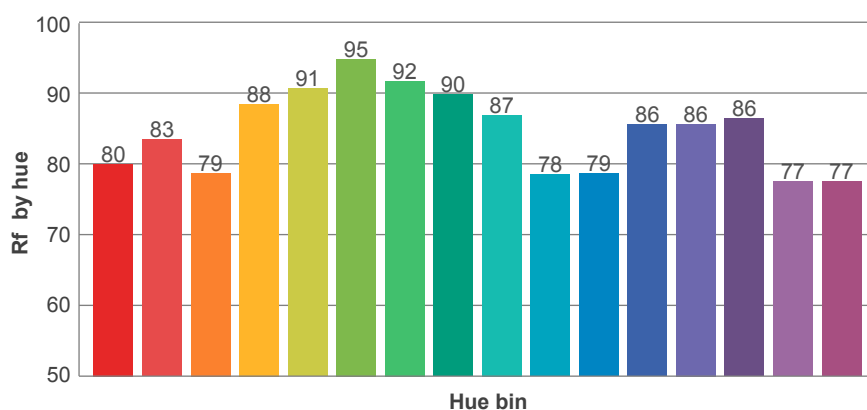
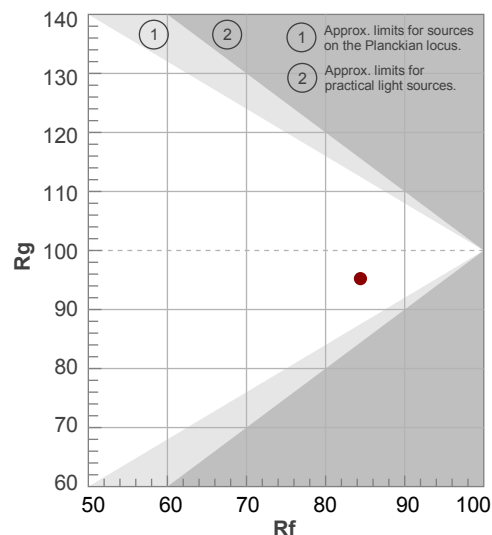
## Rf 84,4

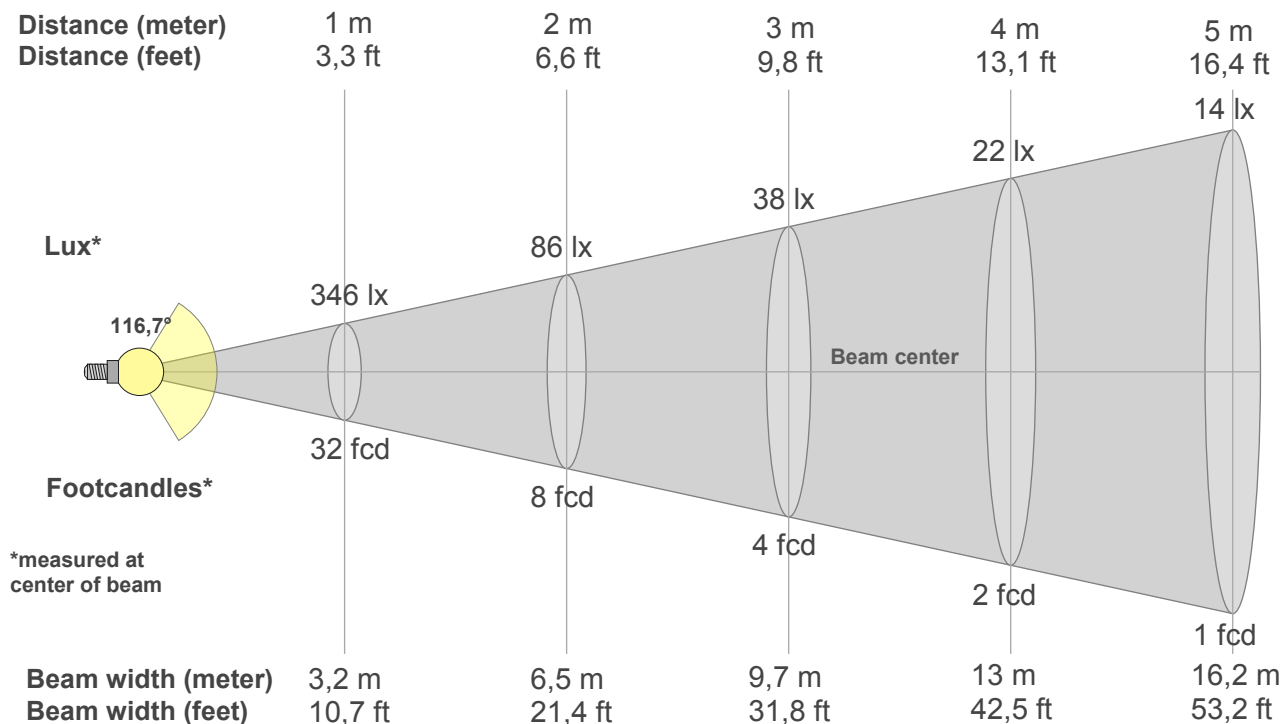
Fidelity index Rf

## Rg 95,2

Gamut index Rg

Hue Bin	R <sub>f</sub>	Graphic shifts (%)	
		Chroma	Hue
1	80	-12%	0%
2	83	-7%	6%
3	79	-4%	11%
4	88	0%	6%
5	91	0%	3%
6	95	1%	-2%
7	92	-4%	-3%
8	90	-6%	0%
9	87	-6%	7%
10	78	-6%	12%
11	79	3%	14%
12	86	6%	5%
13	86	8%	-8%
14	86	3%	-7%
15	77	-1%	-17%
16	77	-6%	-13%





## Beam intensities from 1-20m

1m	2m	3m	4m	5m	6m	7m	8m	9m	10m	11m	12m	13m	14m	15m	16m	17m	18m	19m	20m
3,3ft	6,6ft	9,8ft	13,1ft	16,4ft	19,7ft	23ft	26,2ft	29,5ft	32,8ft	36,1ft	39,4ft	42,7ft	45,9ft	49,2ft	52,5ft	55,8ft	59,1ft	62,3ft	65,6ft
346lx	86lx	38lx	22lx	14lx	10lx	7lx	5lx	4lx	3lx	3lx	2lx	2lx	2lx	2lx	1lx	1lx	1lx	1lx	1lx
32,1fcd	8fcd	3,6fcd	2fcd	1,3fcd	0,9fcd	0,7fcd	0,5fcd	0,4fcd	0,3fcd	0,3fcd	0,2fcd	0,2fcd	0,2fcd	0,1fcd	0,1fcd	0,1fcd	0,1fcd	0,1fcd	0,1fcd

## Intensities in 0° c-plane

0°	5°	10°	15°	20°	25°	30°	35°	40°	45°	50°	55°	60°	65°	70°	75°	80°	85°	90°	95°
346	345	341	335	326	315	301	286	267	244	218	190	154	116	75	42	20	8	3	2
100%	100%	99%	97%	94%	91%	87%	83%	77%	71%	63%	55%	45%	33%	22%	12%	6%	2%	1%	1%

## Intensities in 90° c-plane

0°	5°	10°	15°	20°	25°	30°	35°	40°	45°	50°	55°	60°	65°	70°	75°	80°	85°	90°	95°
346	345	341	335	327	316	304	288	270	249	224	197	168	133	96	59	28	9	1	1
100%	100%	99%	97%	94%	91%	88%	83%	78%	72%	65%	57%	48%	38%	28%	17%	8%	3%	0%	0%

## Intensities in 180° c-plane

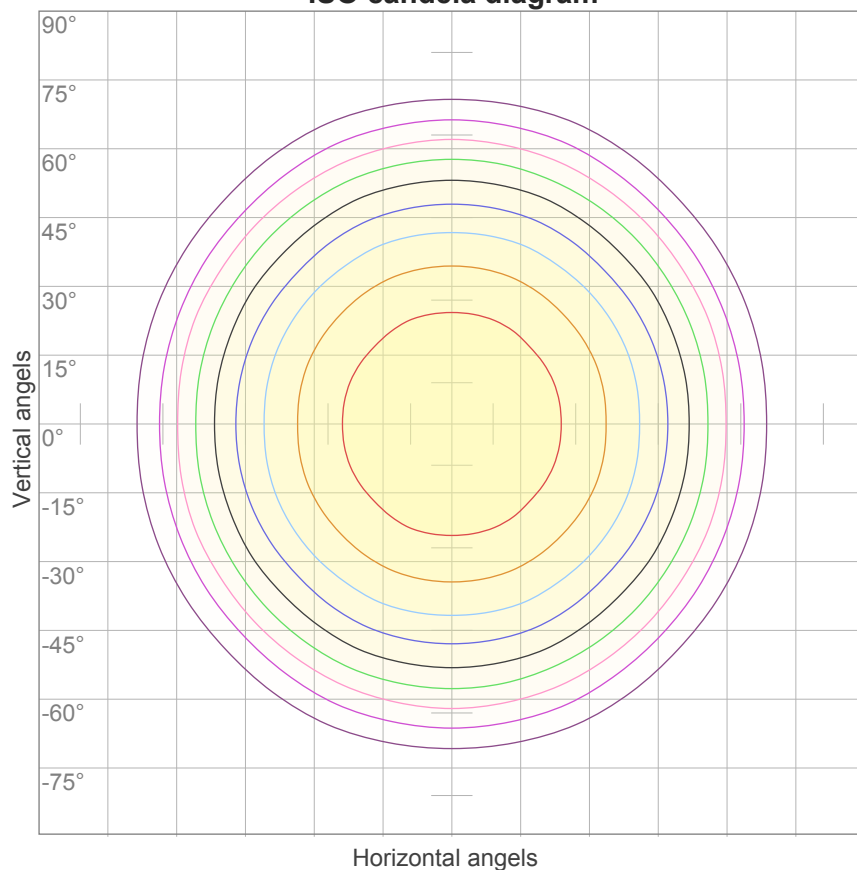
0°	5°	10°	15°	20°	25°	30°	35°	40°	45°	50°	55°	60°	65°	70°	75°	80°	85°	90°	95°
346	345	341	335	326	315	301	286	267	244	218	190	154	116	75	42	20	8	3	2
100%	100%	99%	97%	94%	91%	87%	83%	77%	71%	63%	55%	45%	33%	22%	12%	6%	2%	1%	1%

## Intensities in 270° c-plane

0°	5°	10°	15°	20°	25°	30°	35°	40°	45°	50°	55°	60°	65°	70°	75°	80°	85°	90°	95°
346	345	341	335	327	316	304	288	270	249	224	197	168	133	96	59	28	9	1	1
100%	100%	99%	97%	94%	91%	88%	83%	78%	72%	65%	57%	48%	38%	28%	17%	8%	3%	0%	0%

Beam angle 50%	Field angle 10%	Cutoff angle 2,5%	Intensity ratio in 120° cone	Intensity ratio in 90° cone
116,7°	155,4°	170,8°	80,5%	53,7%

ISO candela diagram



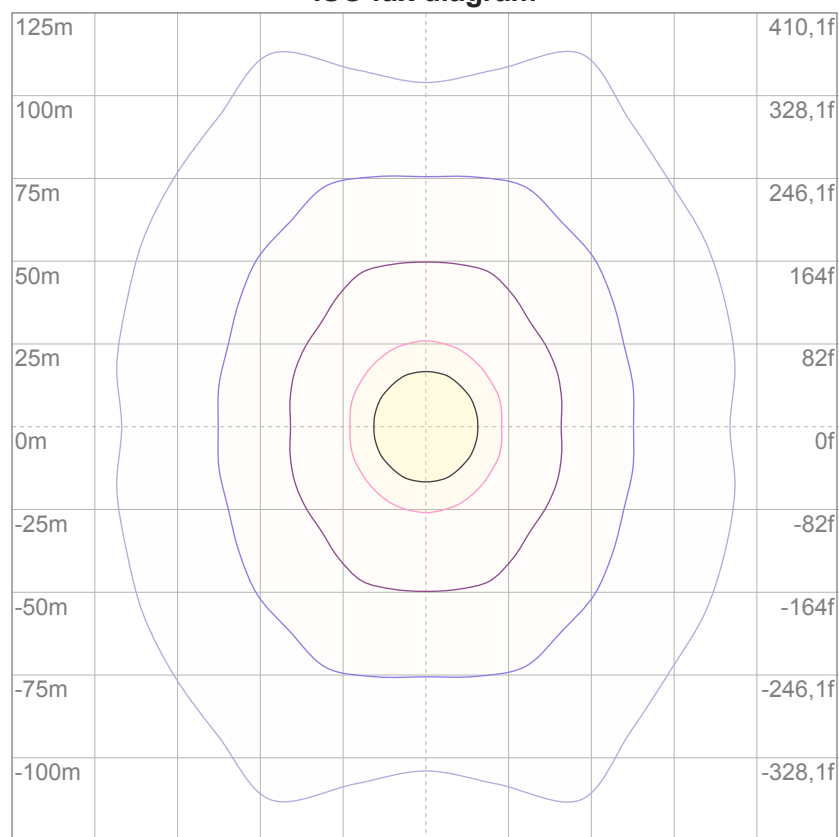
10%	35 cd
20%	69 cd
30%	104 cd
40%	138 cd
50%	173 cd
60%	207 cd
70%	242 cd
80%	277 cd
90%	311 cd

Conditions:

Number of c-planes: 16

Candela at center: 346 cd

ISO lux diagram



3%	0,104 lx
5%	0,173 lx
10%	0,346 lx
30%	1,04 lx
50%	1,73 lx

Conditions:

Number of c-planes: 16

Lux at center: 3,46 lx

*Lux distribution on a surface  
when lamp is mounted at 10  
meters from the surface.*

### Glare Evaluation According to UGR

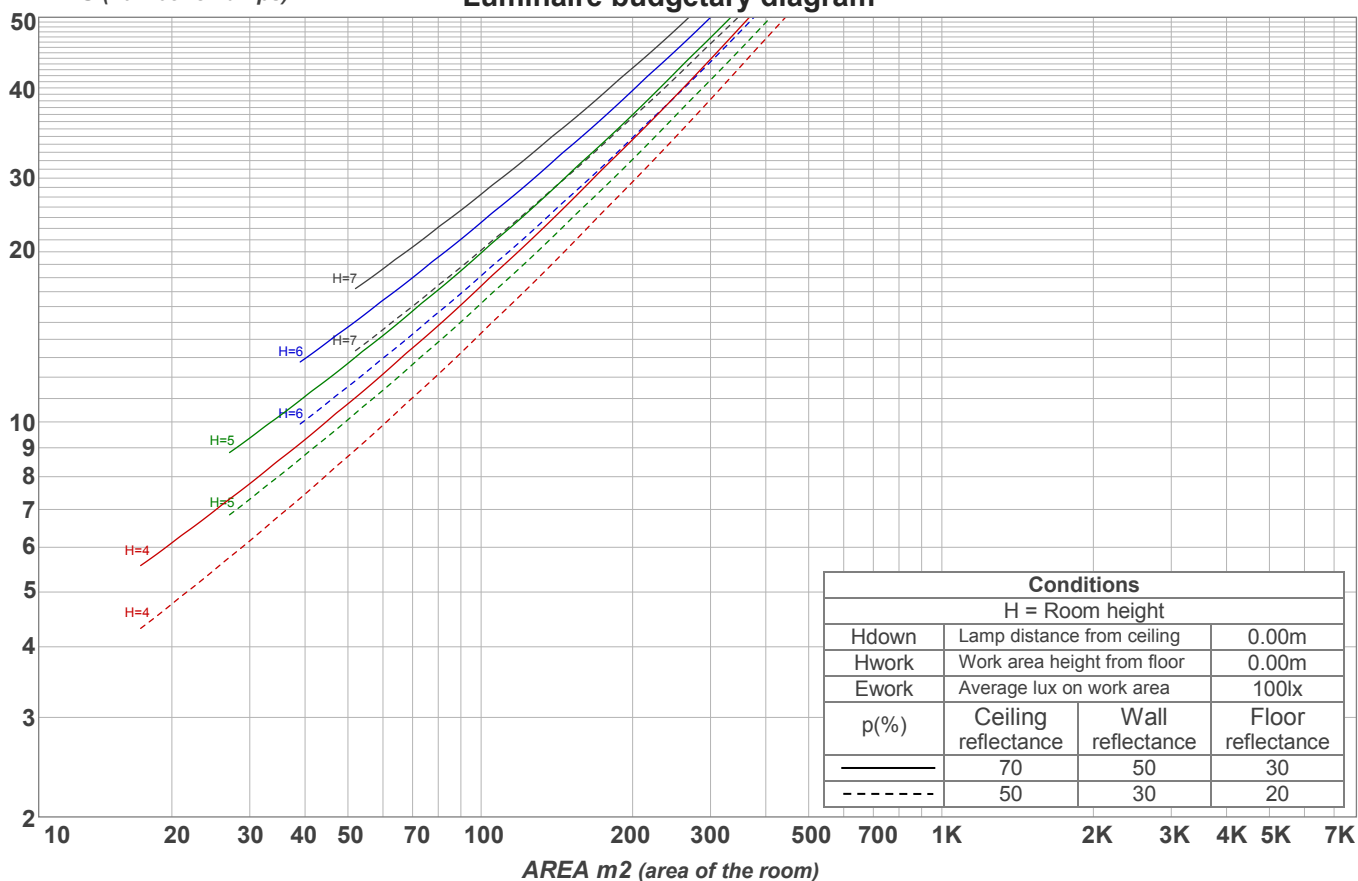
p Ceiling		70	70	50	50	30	70	70	50	50	30
p Walls		50	30	50	30	30	50	30	50	30	30
p Floor		20	20	20	20	20	20	20	20	20	20
Room size X      Y		Viewing direction at right angles to lamp axis					Viewing direction parallel to lamp axis				
2H	2H	23,6	24,8	23,8	25,1	25,3	24,4	25,6	24,6	25,9	26,1
	3H	24,4	25,7	24,8	26,0	26,2	25,7	26,9	26,1	27,2	27,4
	4H	24,6	25,8	25,0	26,1	26,4	26,1	27,3	26,5	27,6	27,8
	6H	24,8	25,8	25,1	26,1	26,5	26,4	27,4	26,7	27,7	28,1
	8H	24,7	25,8	25,1	26,1	26,5	26,4	27,4	26,8	27,7	28,2
	12H	24,7	25,7	25,1	26,0	26,5	26,4	27,4	26,8	27,7	28,2
4H	2H	24,1	25,3	24,5	25,6	25,8	24,8	26,0	25,2	26,2	26,5
	3H	25,2	26,2	25,6	26,6	27,0	26,3	27,3	26,7	27,6	28,1
	4H	25,4	26,3	25,9	26,7	27,3	26,8	27,7	27,2	28,1	28,6
	6H	25,5	26,4	26,0	26,8	27,1	27,1	27,9	27,6	28,3	28,7
	8H	25,5	26,3	26,0	26,7	27,1	27,1	27,9	27,6	28,3	28,7
	12H	25,5	26,2	26,0	26,6	27,1	27,2	27,8	27,7	28,2	28,7
8H	4H	25,6	26,4	26,1	26,7	27,1	26,8	27,6	27,3	28,0	28,4
	6H	25,8	26,3	26,3	26,8	27,4	27,2	27,8	27,7	28,3	28,8
	8H	25,8	26,3	26,3	26,8	27,5	27,3	27,9	27,9	28,4	29,0
	12H	25,8	26,2	26,4	26,7	27,4	27,4	27,8	28,0	28,3	28,9
12H	4H	25,6	26,2	26,1	26,6	27,1	26,8	27,5	27,3	27,9	28,4
	6H	25,8	26,3	26,3	26,8	27,5	27,2	27,7	27,7	28,3	28,9
	8H	25,8	26,3	26,4	26,8	27,4	27,3	27,8	27,9	28,3	28,9
Variation of the observer position for the luminaire distance S											
S = 1.0H		0,1 / -0,2					0,1 / -0,1				
S = 1.5H		0,4 / -0,6					0,2 / -0,3				
S = 2.0H		1,0 / -1,4					0,7 / -1,0				
Standard table		n/a					n/a				
Correction summand		n/a					n/a				
Corrected glare indices referring to 1012 lm total luminous flux											

## Coefficients of Utilization

Ceiling reflectance	80				70				50			30			10			0
Wall reflectance	70	50	30	10	70	50	30	10	50	30	10	50	30	10	50	30	10	0
Floor reflectance	20	20	20	20	20	20	20	20	20	20	20	20	20	20	20	20	20	0
RCR	(RCR: Room Cavity Ratio) Room Values are expressed as percentage of Lumens delivered to the task surface																	
0	119	119	119	119	116	116	116	116	111	111	111	106	106	106	101	101	101	99
1	109	104	100	97	106	102	98	95	98	95	92	94	91	89	90	88	86	84
2	99	91	84	79	97	89	83	78	86	80	76	82	78	74	79	76	72	70
3	90	80	72	65	88	78	71	65	75	69	64	72	67	62	70	65	61	59
4	83	71	62	55	80	69	61	55	67	60	54	64	58	53	62	57	52	50
5	76	63	54	48	74	62	54	47	60	52	47	58	51	46	56	50	46	43
6	70	57	48	41	68	56	47	41	54	46	41	52	45	40	50	45	40	38
7	65	51	43	36	63	50	42	36	49	41	36	47	41	36	46	40	35	33
8	60	47	38	32	59	46	38	32	45	37	32	43	37	32	42	36	32	30
9	56	43	35	29	55	42	34	29	41	34	29	40	33	29	39	33	28	27
10	53	39	32	26	51	39	31	26	38	31	26	37	30	26	36	30	26	24

LAMPS (number of lamps)

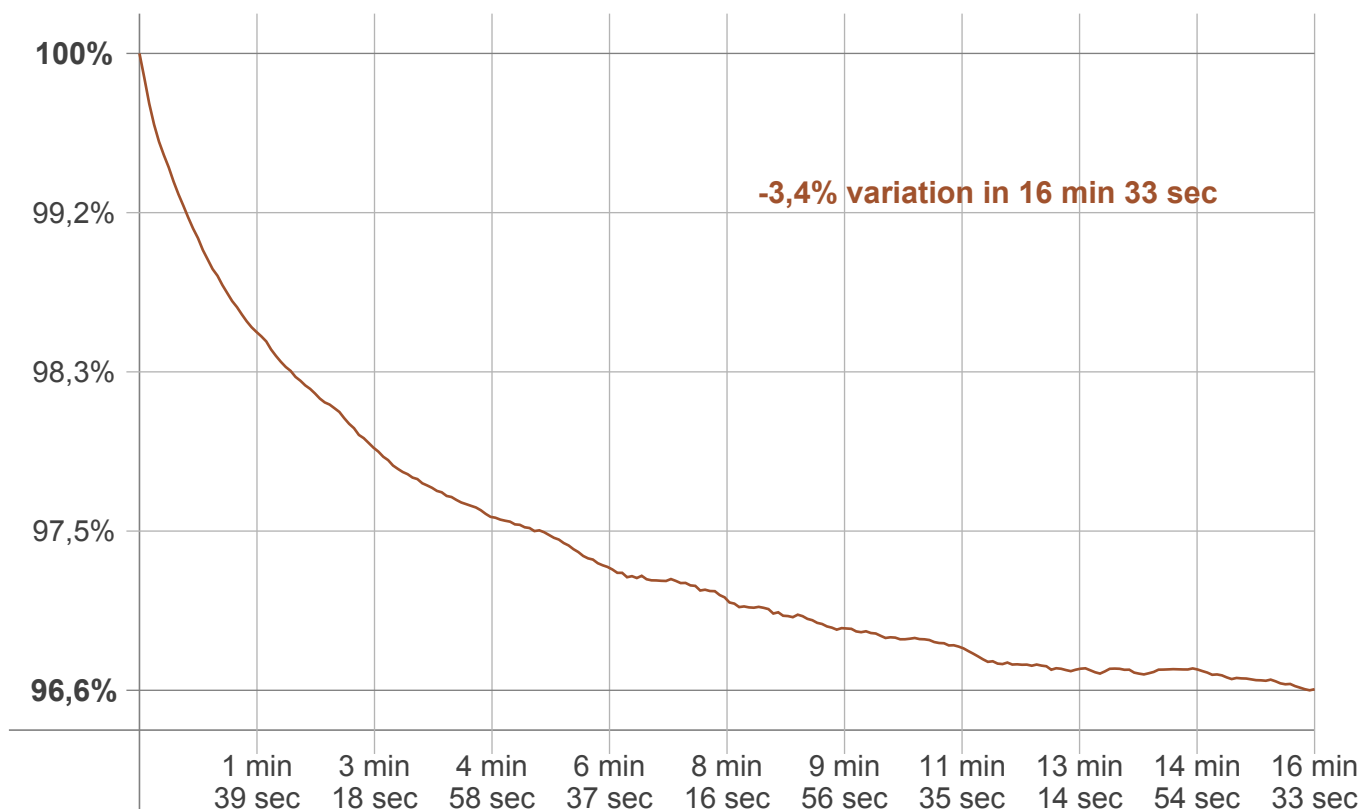
## Luminaire budgetary diagram



## Zonal Lumen Summary

0°-10°	10°-20°	20°-30°	30°-40°	40°-50°	50°-60°	60°-70°	70°-80°	80°-90°
31,8 lm	95,4 lm	144 lm	178 lm	191 lm	175 lm	124 lm	54,9 lm	12,2 lm
90°-100°	100°-110°	110°-120°	120°-130°	130°-140°	140°-150°	150°-160°	160°-170°	170°-180°
1,80 lm	1,42 lm	0,898 lm	0,811 lm	0,479 lm	0,247 lm	0,182 lm	0,111 lm	1,02 lm

## Warmup curve



## Warmup result

Warmup time:	16 min 33 sec
Warmup variation	-3,4%

## Warmup conditions

Stable period:	15 min
Stable change max:	2,0%
Minimum time:	15 min

## Color temperature change

CCT start	CCT change	CCT end
4051 K	+23 K	4074 K

## Output change

Output start	Output change	Output end
1043 lm	-32 lm	1012 lm