

Light efficiency:

104 Lumen/Watt

Light quality:

CRI: 92,3

Color temperature:

5530 K

Output: 1048 lm

Peak: 344 cd

Power: 10,1 W

PF: 1,0



Product name:

Pegasus-4-0508-956-CST

Item number:

FLNP/L/09D0508/956/CST

Date and time:

06.04.2021 15:33:00

Description:

Rank: G7-2G0

Toleranzen:

Lumen +/-4%

Candela +/-2,5%

Colour Temp +/-35 K

CRI +/-0,7

Angular Resolution 1 Grad step

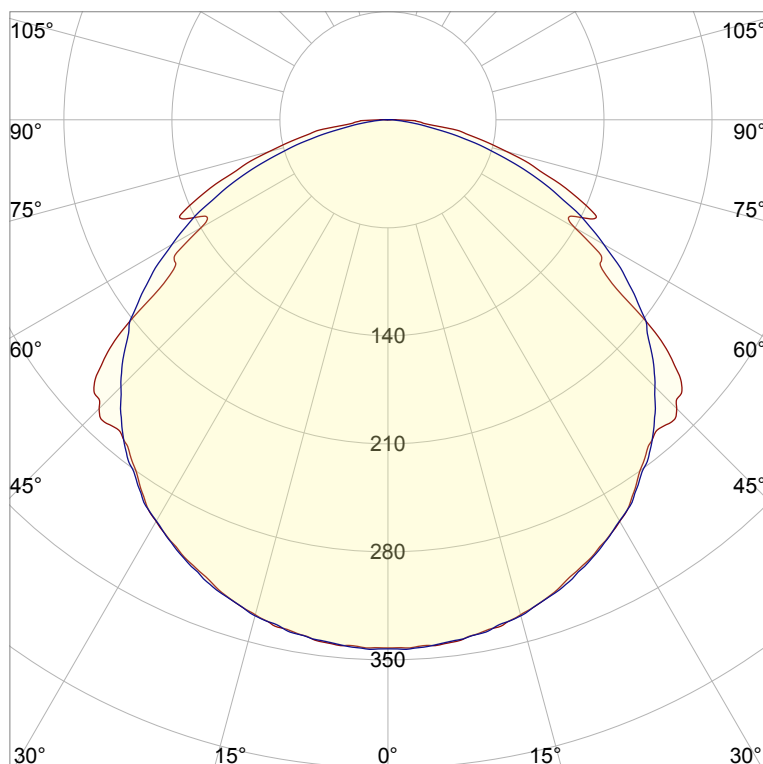
Last Calibration 20-05-2020

Pruefer: Peter Ulrich

Pruefort: Lichtlabor

Gaustrasse 13

55411 Bingen am Rhein

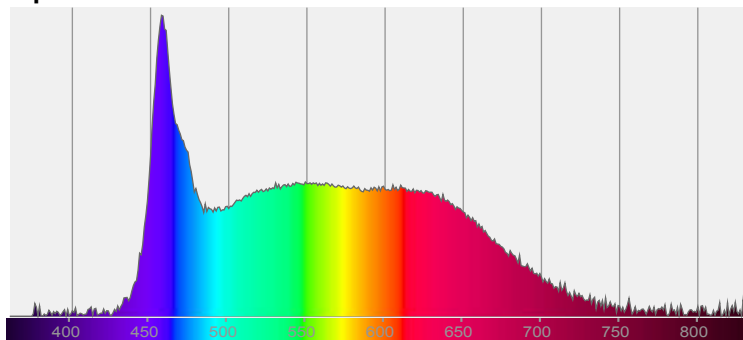


CIE 1931

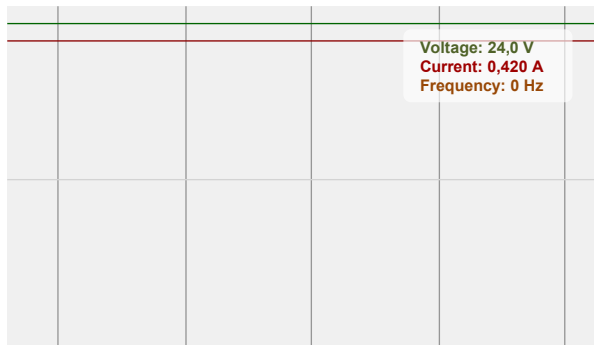
x: 0,332

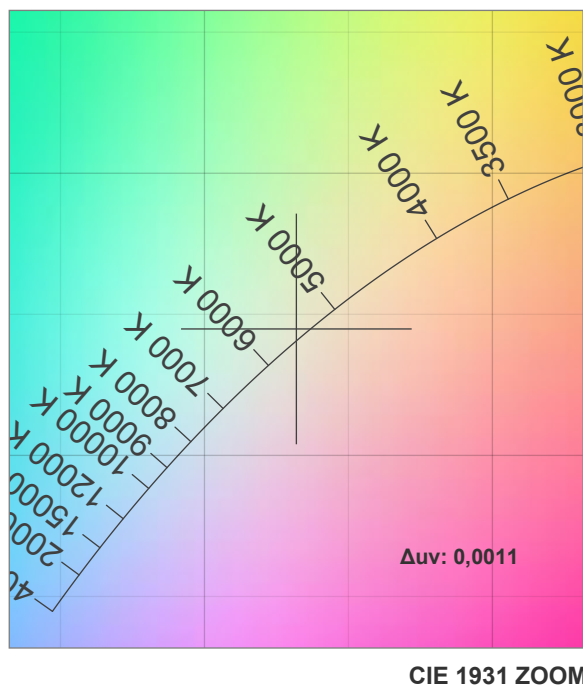
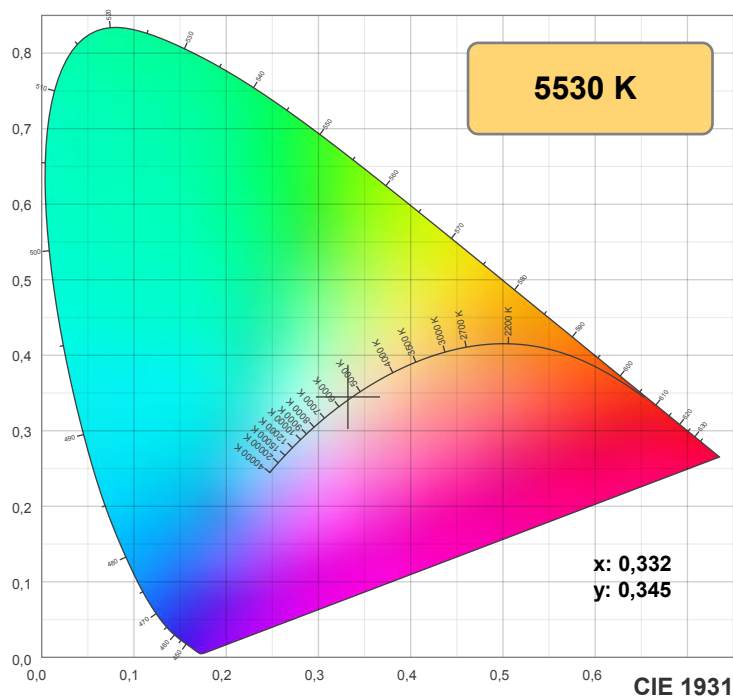
y: 0,345

Spectra

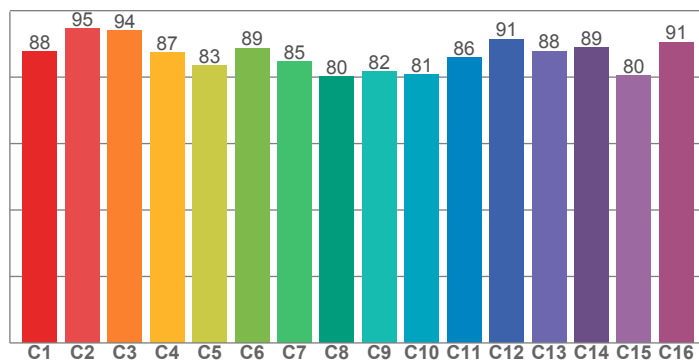


Power

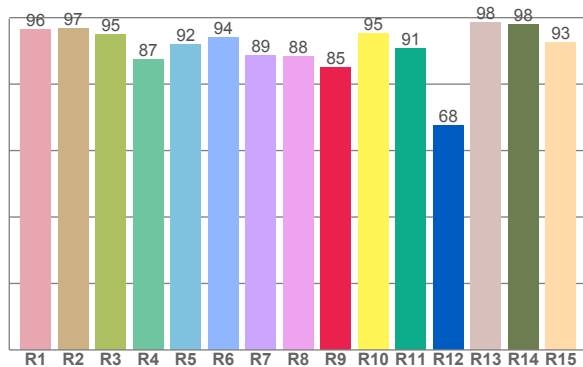




TM30: 86,7



CRI: 92,3 (R1-R8)



CRI R values, only R1-R8 are used to calculate final CRI value

R1	R2	R3	R4	R5	R6	R7	R8	R9	R10	R11	R12	R13	R14	R15
96,4	96,6	95,1	87,5	92,1	94,2	88,7	88,2	85,1	95,3	90,8	67,6	98,4	97,9	92,5

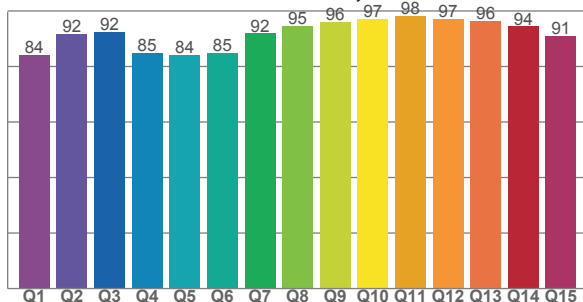
TM30 C values, 16 binned values out of total of 99 C values

C1	C2	C3	C4	C5	C6	C7	C8	C9	C10	C11	C12	C13	C14	C15	C16
87,7	94,6	94,0	87,4	83,5	88,8	84,8	80,3	81,6	80,8	86,0	91,4	87,9	88,9	80,4	90,6

CQS Q values

Q1	Q2	Q3	Q4	Q5	Q6	Q7	Q8	Q9	Q10	Q11	Q12	Q13	Q14	Q15
84,0	91,6	92,5	84,7	84,2	84,9	91,9	94,6	96,1	97,2	98,1	97,1	96,4	94,4	91,1

CQS: 90,5



Color parameters

Color temperature	Color rendering index	Red component	Color fidelity	Color gamut	Color quality scale	Color coordinate cie 1931	Color coordinate cie 1931	Color coordinate	Color coordinate	Color deviation from black body
CCT	CRI	CRI R9	TM30 Rf	TM30 Rg	CQS	x	y	u	v	Δuv
5530 K	92,3	85,1	86,7	94,3	90,5	0,332	0,345	0,205	0,320	0,0011

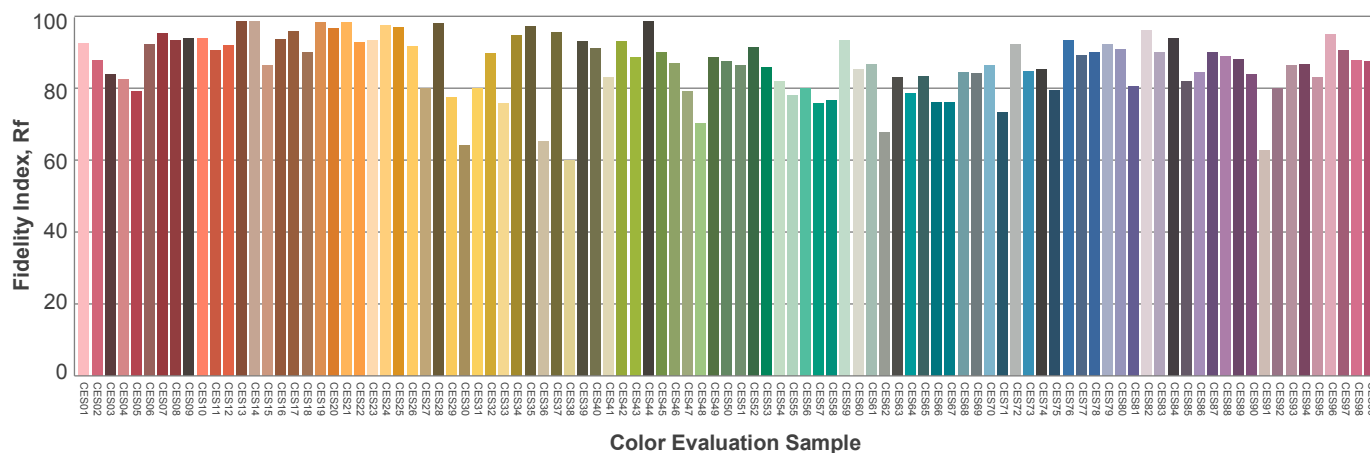
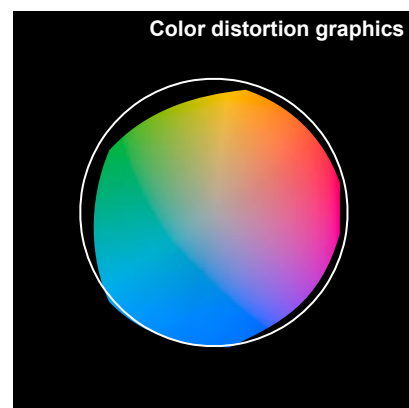
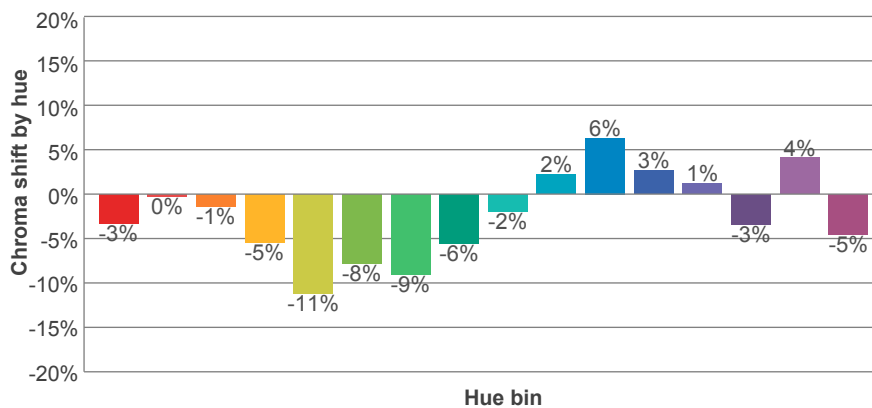
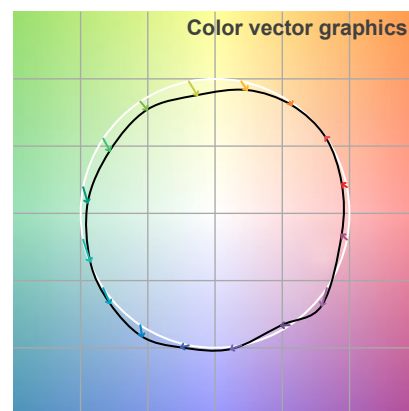
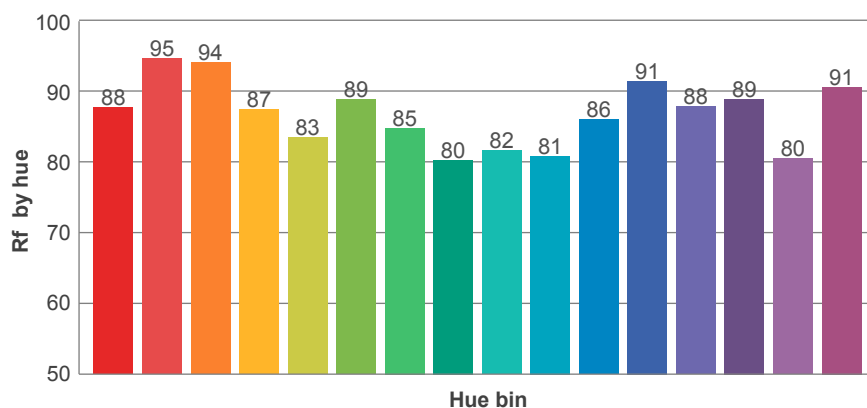
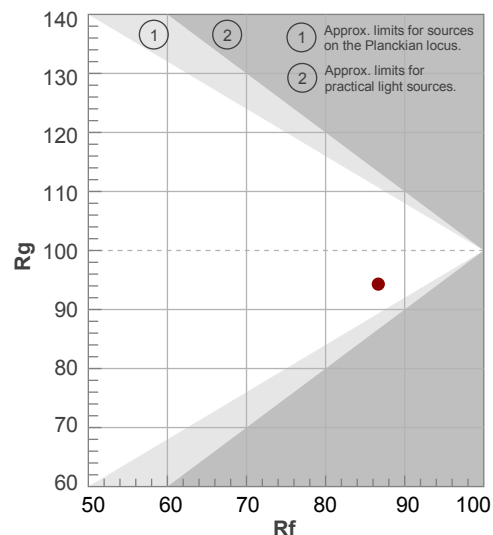
Rf 86,7

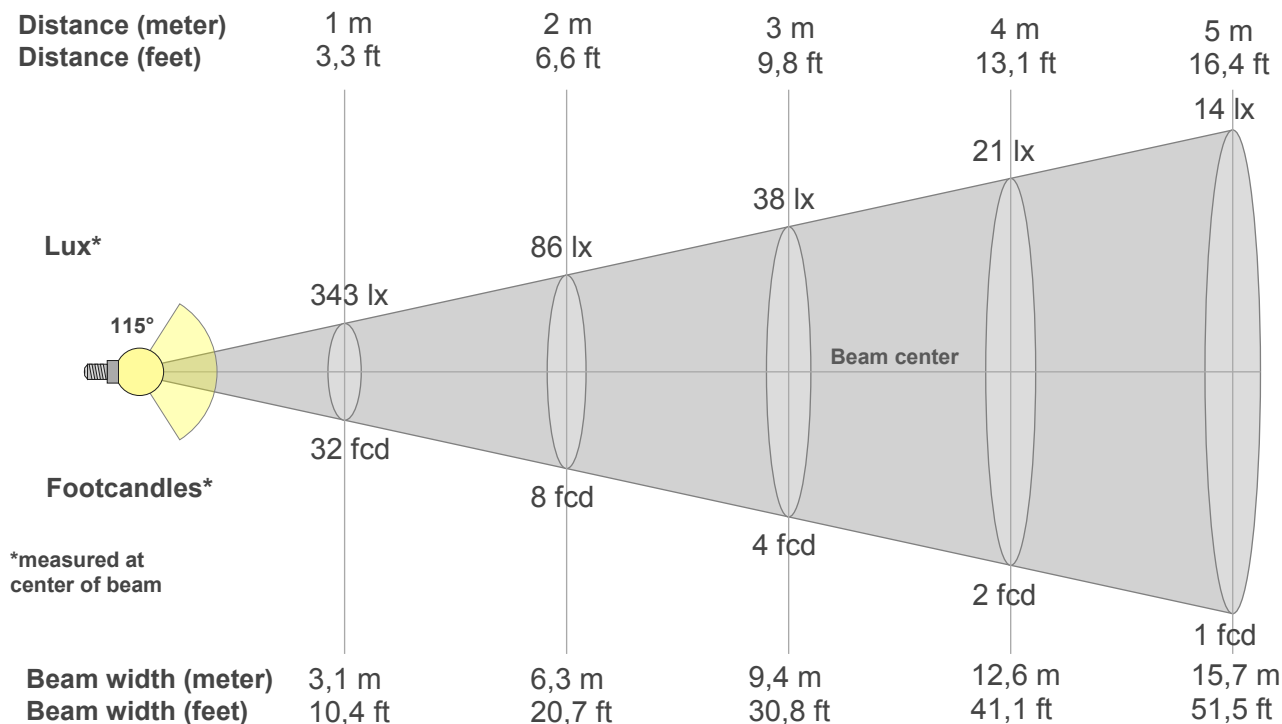
Fidelity index Rf

Rg 94,3

Gamut index Rg

Hue Bin	R _f	Graphic shifts (%)	
		Chroma	Hue
1	88	-3%	3%
2	95	0%	2%
3	94	-1%	-3%
4	87	-5%	-5%
5	83	-11%	-4%
6	89	-8%	-1%
7	85	-9%	5%
8	80	-6%	11%
9	82	-2%	17%
10	81	2%	12%
11	86	6%	6%
12	91	3%	-5%
13	88	1%	-8%
14	89	-3%	-5%
15	80	4%	-13%
16	91	-5%	3%





Beam intensities from 1-20m

1m	2m	3m	4m	5m	6m	7m	8m	9m	10m	11m	12m	13m	14m	15m	16m	17m	18m	19m	20m
3,3ft	6,6ft	9,8ft	13,1ft	16,4ft	19,7ft	23ft	26,2ft	29,5ft	32,8ft	36,1ft	39,4ft	42,7ft	45,9ft	49,2ft	52,5ft	55,8ft	59,1ft	62,3ft	65,6ft
343lx	86lx	38lx	21lx	14lx	10lx	7lx	5lx	4lx	3lx	3lx	2lx	2lx	2lx	2lx	1lx	1lx	1lx	1lx	1lx
31,9fcd	8fcd	3,5fcd	2fcd	1,3fcd	0,9fcd	0,7fcd	0,5fcd	0,4fcd	0,3fcd	0,3fcd	0,2fcd	0,2fcd	0,2fcd	0,1fcd	0,1fcd	0,1fcd	0,1fcd	0,1fcd	0,1fcd

Intensities in 0° c-plane

0°	5°	10°	15°	20°	25°	30°	35°	40°	45°	50°	55°	60°	65°	70°	75°	80°	85°	90°	95°
343	342	338	332	323	312	300	283	268	265	239	170	140	149	115	80	51	22	4	0
100%	100%	98%	97%	94%	91%	88%	82%	78%	77%	70%	50%	41%	43%	34%	23%	15%	7%	1%	0%

Intensities in 90° c-plane

0°	5°	10°	15°	20°	25°	30°	35°	40°	45°	50°	55°	60°	65°	70°	75°	80°	85°	90°	95°
343	342	338	333	324	313	300	285	267	245	220	194	161	128	93	59	27	9	1	0
100%	100%	99%	97%	94%	91%	87%	83%	78%	71%	64%	56%	47%	37%	27%	17%	8%	3%	0%	0%

Intensities in 180° c-plane

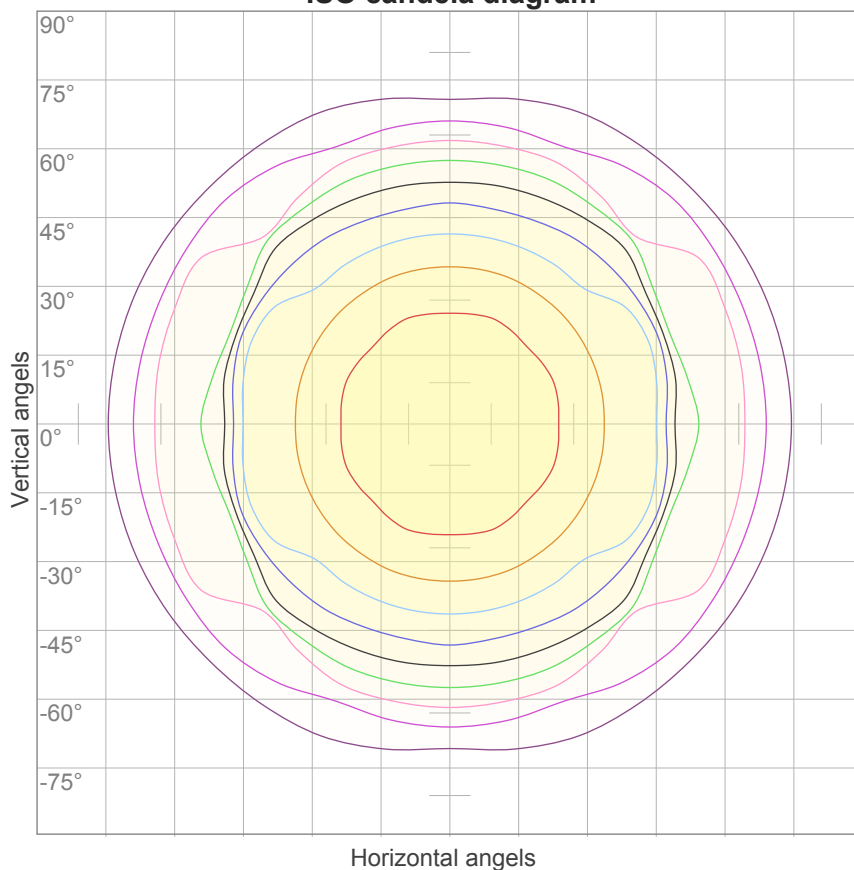
0°	5°	10°	15°	20°	25°	30°	35°	40°	45°	50°	55°	60°	65°	70°	75°	80°	85°	90°	95°
343	342	338	332	323	312	300	283	268	265	239	170	140	149	115	80	51	22	4	0
100%	100%	98%	97%	94%	91%	88%	82%	78%	77%	70%	50%	41%	43%	34%	23%	15%	7%	1%	0%

Intensities in 270° c-plane

0°	5°	10°	15°	20°	25°	30°	35°	40°	45°	50°	55°	60°	65°	70°	75°	80°	85°	90°	95°
343	342	338	333	324	313	300	285	267	245	220	194	161	128	93	59	27	9	1	0
100%	100%	99%	97%	94%	91%	87%	83%	78%	71%	64%	56%	47%	37%	27%	17%	8%	3%	0%	0%

Beam angle 50%	Field angle 10%	Cutoff angle 2,5%	Intensity ratio in 120° cone	Intensity ratio in 90° cone
115°	163,4°	175,2°	77,5%	51,7%

ISO candela diagram



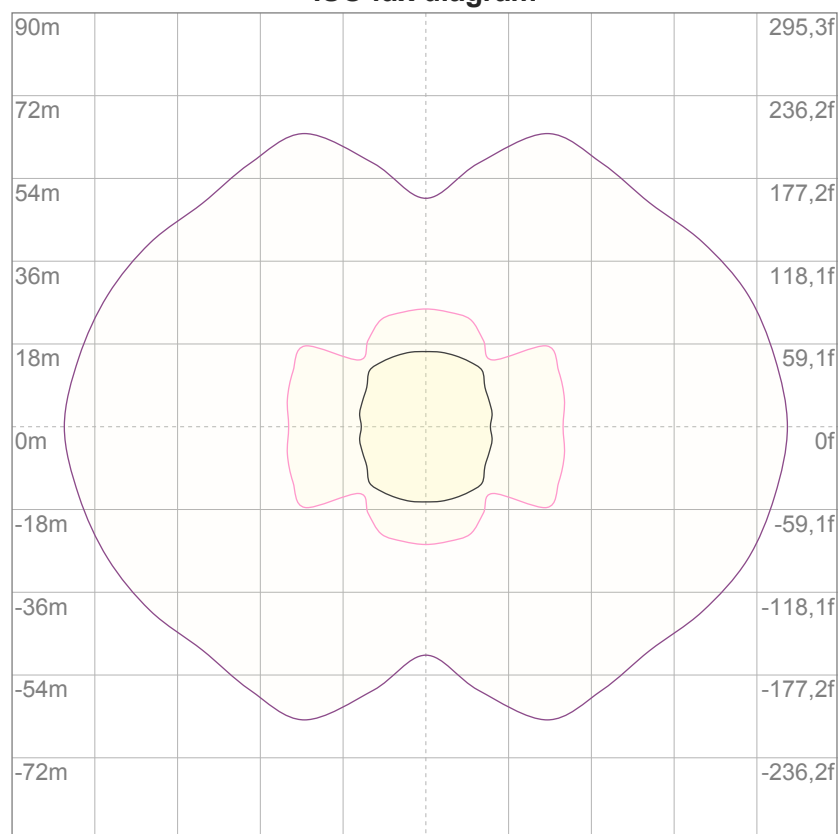
10%	34 cd
20%	69 cd
30%	103 cd
40%	137 cd
50%	172 cd
60%	206 cd
70%	240 cd
80%	275 cd
90%	309 cd

Conditions:

Number of c-planes: 16

Candela at center: 343 cd

ISO lux diagram



Mounting height: 10 meters (33 feet)

3%	0,103 lx
5%	0,172 lx
10%	0,343 lx
30%	1,03 lx
50%	1,72 lx

Conditions:

Number of c-planes: 16

Lux at center: 3,43 lx

*Lux distribution on a surface
when lamp is mounted at 10
meters from the surface.*

Glare Evaluation According to UGR

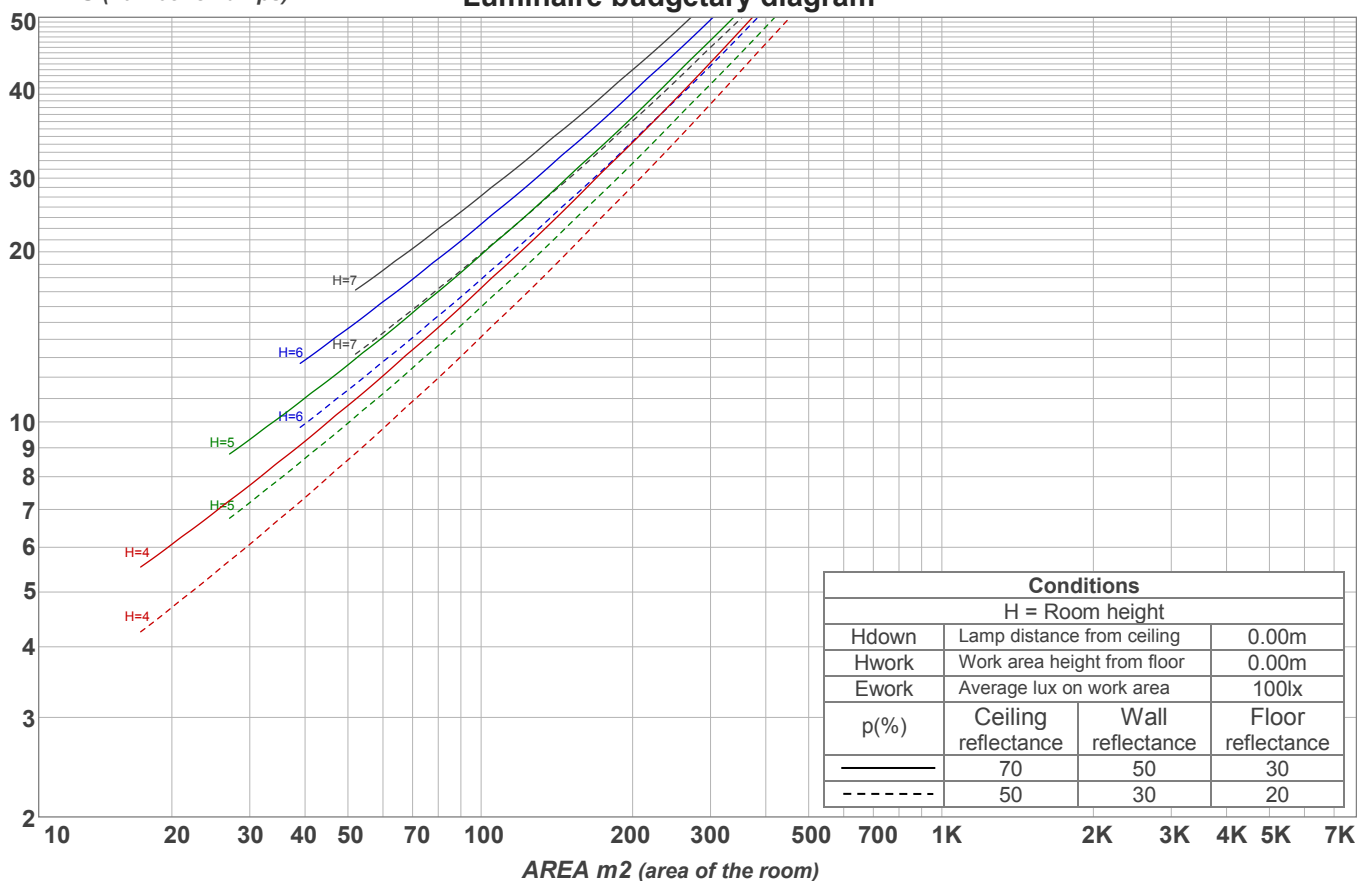
p Ceiling		70	70	50	50	30	70	70	50	50	30
p Walls		50	30	50	30	30	50	30	50	30	30
p Floor		20	20	20	20	20	20	20	20	20	20
Room size X Y		Viewing direction at right angles to lamp axis					Viewing direction parallel to lamp axis				
2H	2H	22,5	23,8	22,8	24,1	24,3	23,8	25,1	24,1	25,4	25,6
	3H	24,1	25,4	24,5	25,7	25,9	25,1	26,3	25,5	26,6	26,8
	4H	24,6	25,8	25,0	26,1	26,4	25,5	26,7	25,9	27,0	27,2
	6H	25,0	26,1	25,3	26,3	26,7	25,8	26,9	26,1	27,1	27,5
	8H	25,1	26,1	25,4	26,4	26,8	25,8	26,9	26,2	27,2	27,6
	12H	25,1	26,1	25,4	26,4	26,9	25,8	26,8	26,2	27,2	27,6
4H	2H	23,1	24,3	23,5	24,6	24,8	24,1	25,3	24,5	25,6	25,9
	3H	25,0	26,0	25,4	26,3	26,8	25,7	26,7	26,0	27,0	27,5
	4H	25,5	26,5	26,0	26,9	27,4	26,1	27,0	26,5	27,4	28,0
	6H	25,9	26,8	26,4	27,2	27,6	26,4	27,3	26,9	27,7	28,0
	8H	26,0	26,9	26,5	27,2	27,6	26,5	27,3	27,0	27,7	28,1
	12H	26,1	26,8	26,6	27,2	27,7	26,5	27,2	27,0	27,6	28,1
8H	4H	25,8	26,6	26,3	27,0	27,4	26,3	27,1	26,8	27,5	27,9
	6H	26,3	26,9	26,8	27,4	27,9	26,8	27,4	27,3	27,9	28,4
	8H	26,5	27,0	27,0	27,6	28,2	26,9	27,5	27,5	28,0	28,6
	12H	26,6	27,1	27,2	27,6	28,2	27,0	27,5	27,6	28,0	28,6
12H	4H	25,8	26,5	26,3	26,9	27,4	26,3	27,0	26,8	27,4	27,9
	6H	26,4	26,9	26,9	27,4	28,1	26,8	27,4	27,3	27,9	28,5
	8H	26,5	27,0	27,1	27,5	28,1	27,0	27,4	27,6	27,9	28,6
Variation of the observer position for the luminaire distance S											
S = 1.0H		0,3 / -0,2					0,1 / 0,0				
S = 1.5H		0,6 / -0,7					0,3 / -0,4				
S = 2.0H		0,9 / -0,9					0,8 / -1,0				
Standard table		n/a					n/a				
Correction summand		n/a					n/a				
Corrected glare indices referring to 1048 lm total luminous flux											

Coefficients of Utilization

Ceiling reflectance	80				70				50			30			10			0
Wall reflectance	70	50	30	10	70	50	30	10	50	30	10	50	30	10	50	30	10	0
Floor reflectance	20	20	20	20	20	20	20	20	20	20	20	20	20	20	20	20	20	0
RCR	(RCR: Room Cavity Ratio) Room Values are expressed as percentage of Lumens delivered to the task surface																	
0	119	119	119	119	116	116	116	116	111	111	111	106	106	106	102	102	102	100
1	108	103	99	95	106	101	97	93	97	93	90	93	90	87	89	87	85	83
2	98	90	83	77	96	88	81	76	84	79	74	81	76	72	78	74	71	68
3	89	79	70	64	87	77	69	63	74	67	62	71	65	61	68	64	59	57
4	82	69	60	54	79	68	60	53	65	58	52	63	57	52	61	55	51	49
5	75	62	53	46	73	61	52	46	59	51	45	56	50	45	55	49	44	42
6	69	56	46	40	67	55	46	40	53	45	39	51	44	39	49	43	39	36
7	64	50	41	35	62	49	41	35	48	40	35	46	39	34	45	39	34	32
8	60	46	37	31	58	45	37	31	44	36	31	42	36	31	41	35	30	28
9	56	42	34	28	54	41	33	28	40	33	28	39	32	28	38	32	27	26
10	52	39	31	25	51	38	30	25	37	30	25	36	30	25	35	29	25	23

LAMPS (number of lamps)

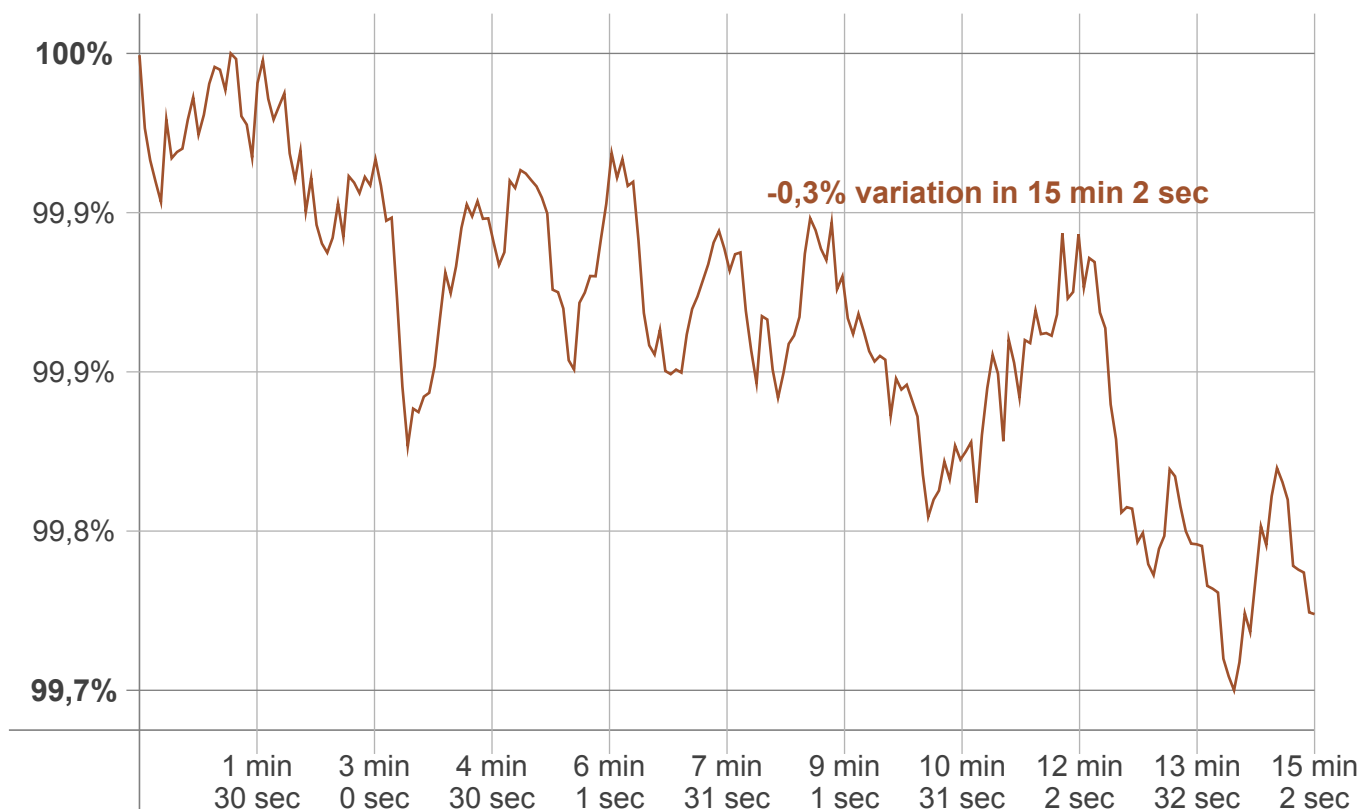
Luminaire budgetary diagram



Zonal Lumen Summary

0°-10°	10°-20°	20°-30°	30°-40°	40°-50°	50°-60°	60°-70°	70°-80°	80°-90°
31,2 lm	94,3 lm	142 lm	181 lm	190 lm	173 lm	129 lm	78,5 lm	23,3 lm
90°-100°	100°-110°	110°-120°	120°-130°	130°-140°	140°-150°	150°-160°	160°-170°	170°-180°
0,774 lm	0,494 lm	1,34 lm	0,171 lm	0,446 lm	0,120 lm	0,088 lm	0,054 lm	1,20 lm

Warmup curve



Warmup result

Warmup time:	15 min 2 sec
Warmup variation	-0,3%

Warmup conditions

Stable period:	15 min
Stable change max:	2,0%
Minimum time:	15 min

Color temperature change

CCT start	CCT change	CCT end
5529 K	+1 K	5530 K

Output change

Output start	Output change	Output end
1049 lm	-1 lm	1048 lm