

Light efficiency:

104 Lumen/Watt

Light quality:

CRI: 94,0

Color temperature:

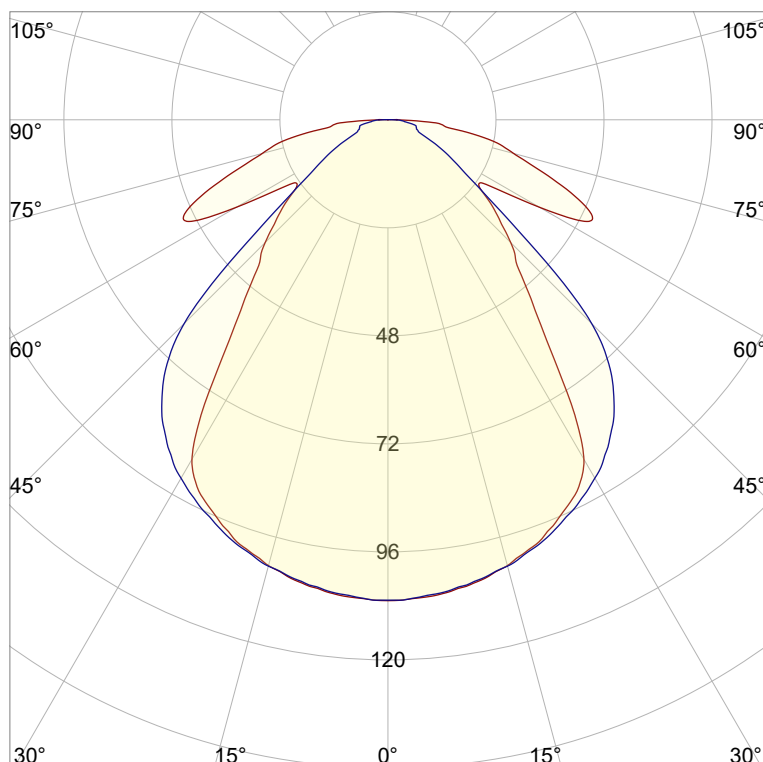
2727 K

Output: 250 lm

Peak: 107 cd

Power: 2,4 W

PF: 1,0



Product name:

**Sta-Maria-6\_510mm\_927\_Cover-Square-Microprismatic**

Item number:

**NP/L1C/01E/G1/L1C/0510/927/CSM**

Date and time:

**28.07.2022 15:29:03**

Description:

**Rank: C80-AD-8GA**

**Tolerances:**

**Lumen +/-4%**

**Candela +/-2,5%**

**Colour Temp +/-35 Kelvin**

**CRI +/-0,7**

**Angular Resolution: 1 Degree Step**

**Last Calibration 20-09-2021**

**Tester: Peter Ulrich**

**Test Site: Lichtlabor**

**Gaustrasse 13**

**55411 Bingen am Rhein**

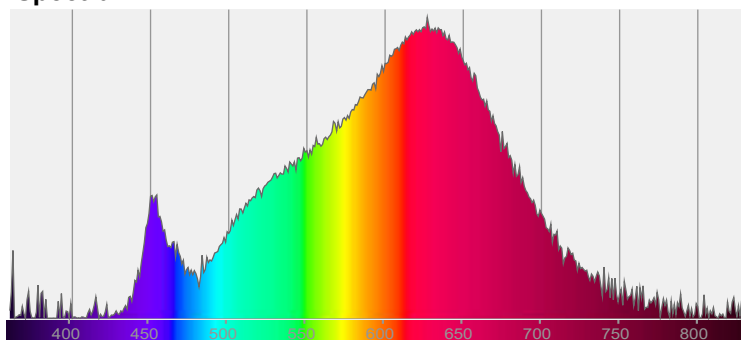


CIE 1931

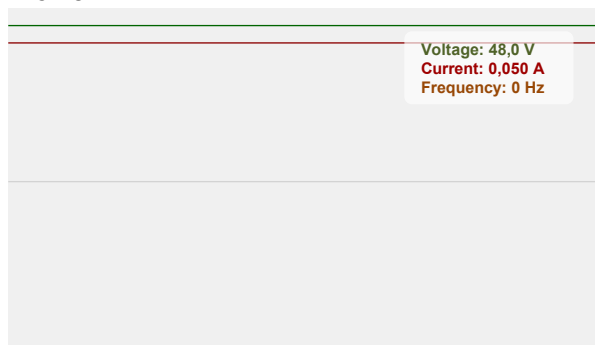
x: 0,459

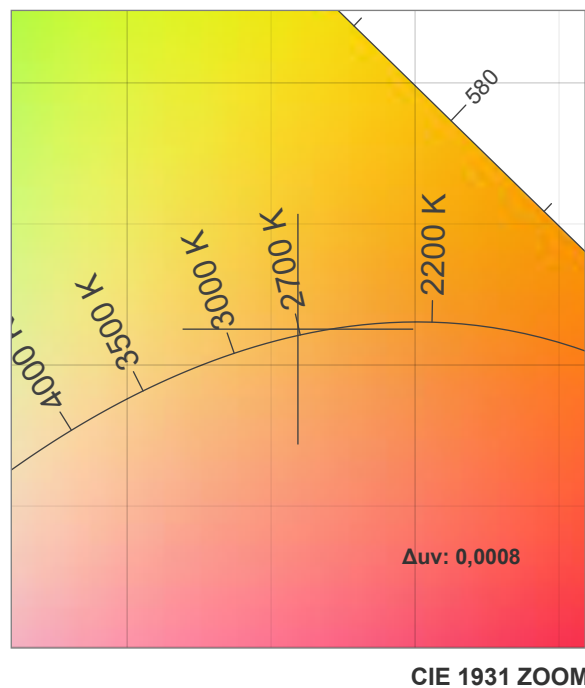
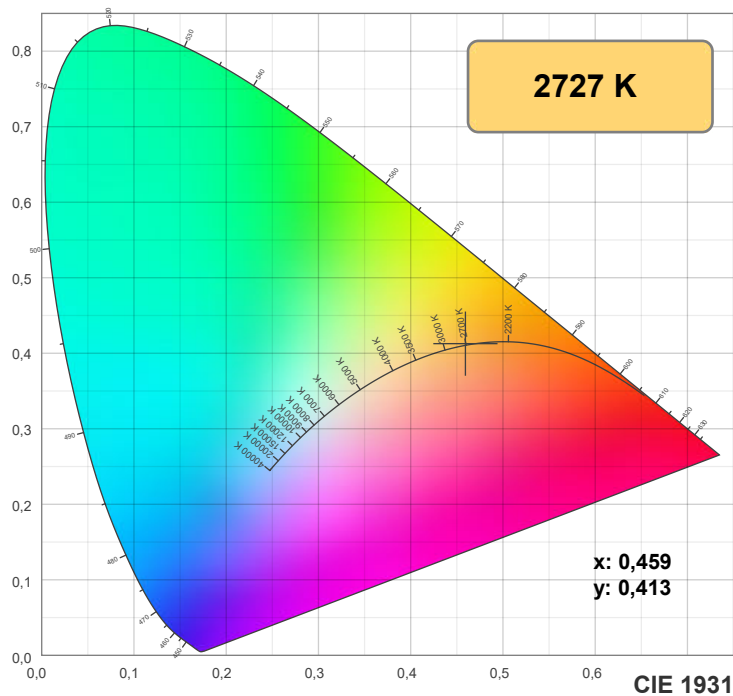
y: 0,413

Spectra

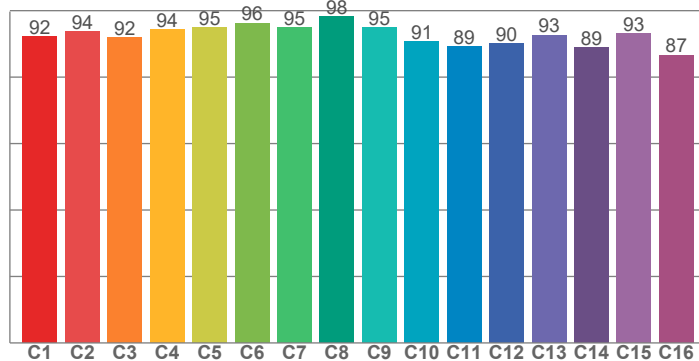


Power

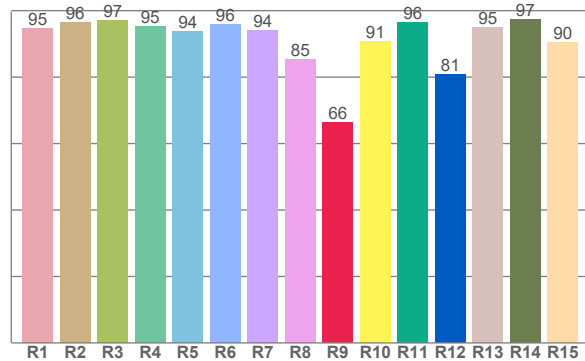




**TM30: 92,5**



**CRI: 94,0 (R1-R8)**



CRI R values, only R1-R8 are used to calculate final CRI value

R1	R2	R3	R4	R5	R6	R7	R8	R9	R10	R11	R12	R13	R14	R15
94,5	96,5	97,0	95,2	93,9	96,0	93,9	85,3	66,5	90,7	96,4	80,8	95,1	97,4	90,5

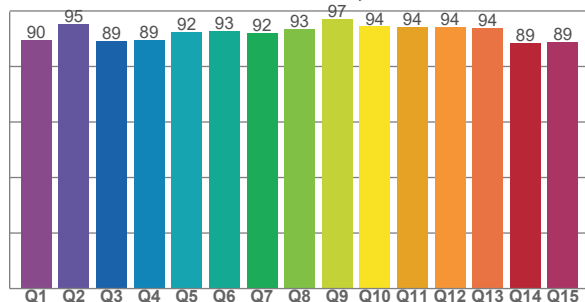
TM30 C values, 16 binned values out of total of 99 C values

C1	C2	C3	C4	C5	C6	C7	C8	C9	C10	C11	C12	C13	C14	C15	C16
92,2	93,7	92,0	94,3	95,0	96,3	94,9	98,3	94,9	90,8	89,1	90,2	92,6	89,0	93,2	86,6

CQS Q values

Q1	Q2	Q3	Q4	Q5	Q6	Q7	Q8	Q9	Q10	Q11	Q12	Q13	Q14	Q15
89,6	95,3	89,2	89,4	92,4	92,7	92,0	93,5	97,1	94,4	94,3	94,1	93,8	88,6	88,9

**CQS: 91,8**



## Color parameters

Color temperature	Color rendering index	Red component	Color fidelity	Color gamut	Color quality scale	Color coordinate cie 1931	Color coordinate cie 1931	Color coordinate	Color coordinate	Color deviation from black body
CCT	CRI	CRI R9	TM30 Rf	TM30 Rg	CQS	x	y	u	v	Δuv
2727 K	94,0	66,5	92,5	99,5	91,8	0,459	0,413	0,261	0,352	0,0008

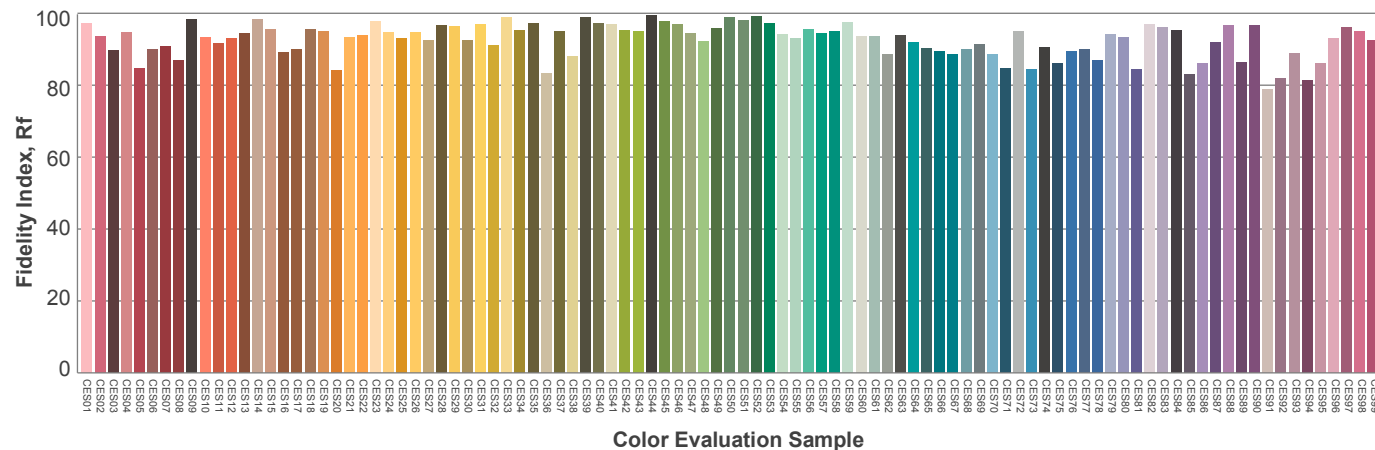
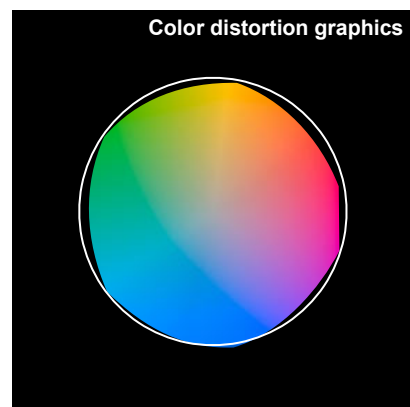
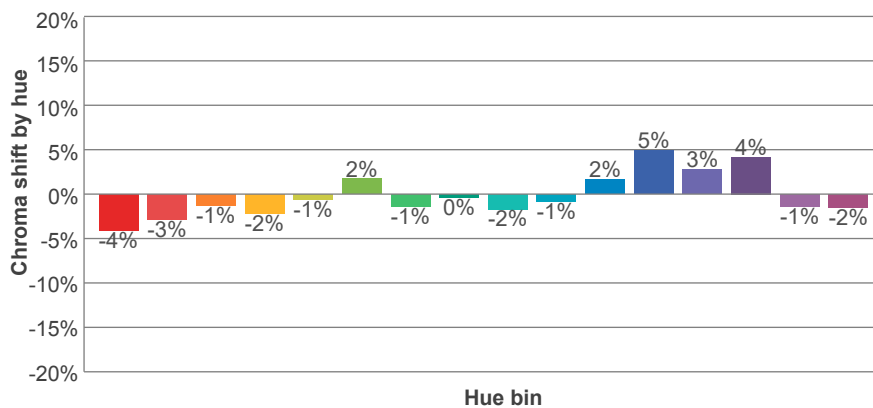
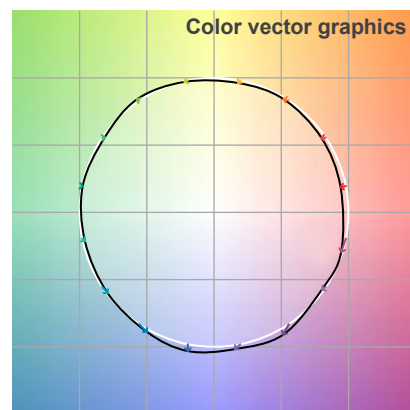
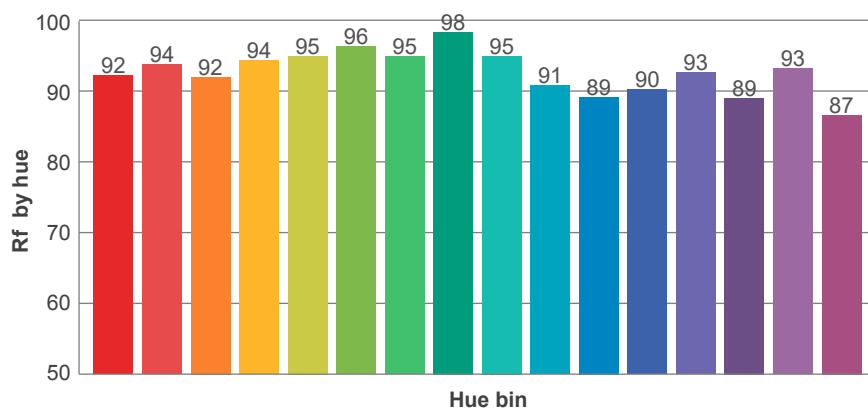
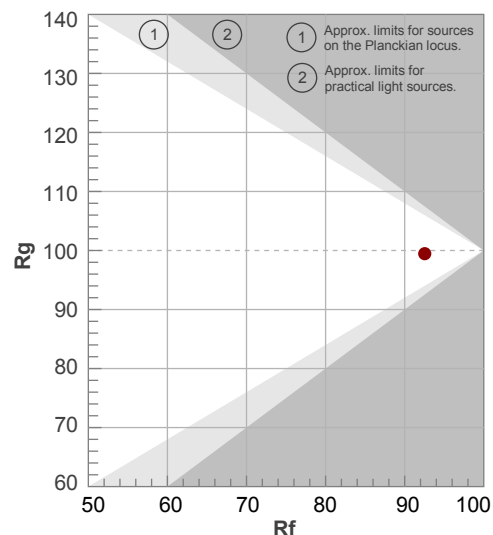
**Rf 92,5**

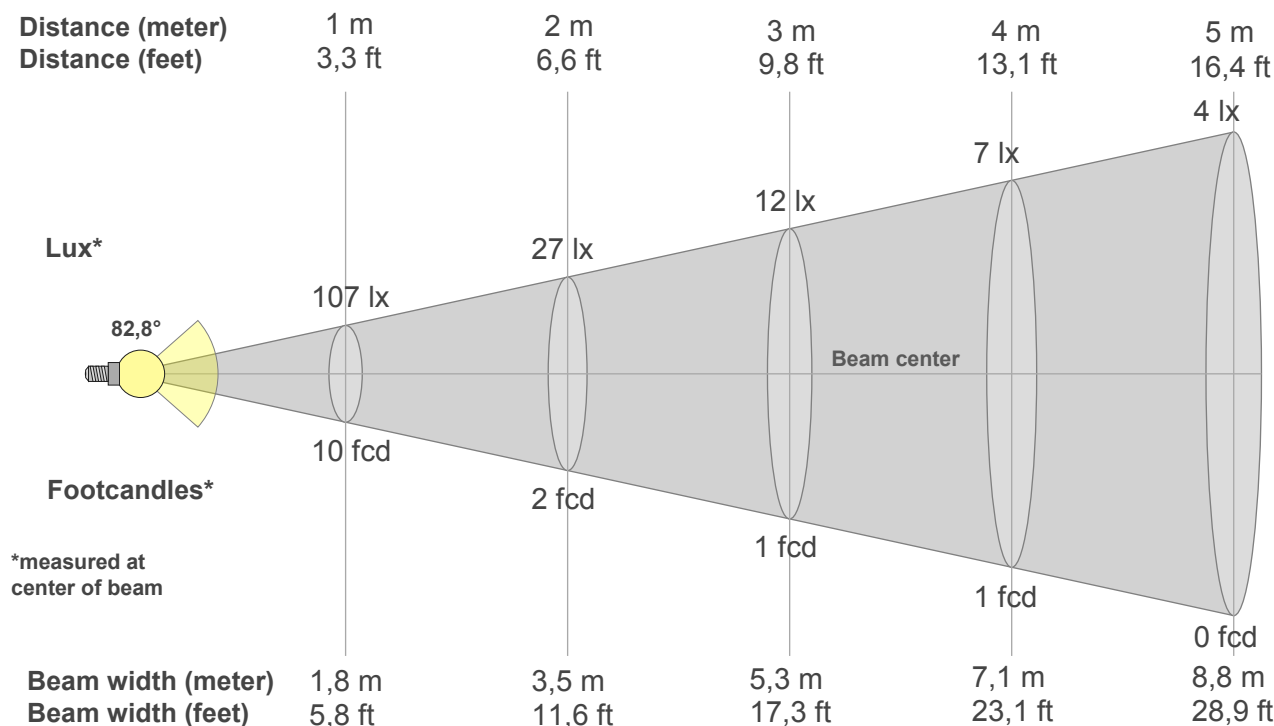
Fidelity index Rf

**Rg 99,5**

Gammut index Rg

Hue Bin	R <sub>f</sub>	Graphic shifts (%)	
		Chroma	Hue
1	92	-4%	0%
2	94	-3%	2%
3	92	-1%	4%
4	94	-2%	1%
5	95	-1%	3%
6	96	2%	1%
7	95	-1%	-1%
8	98	0%	0%
9	95	-2%	2%
10	91	-1%	6%
11	89	2%	8%
12	90	5%	1%
13	93	3%	-5%
14	89	4%	-8%
15	93	-1%	-3%
16	87	-2%	-10%





## Beam intensities from 1-20m

1m	2m	3m	4m	5m	6m	7m	8m	9m	10m	11m	12m	13m	14m	15m	16m	17m	18m	19m	20m
3,3ft	6,6ft	9,8ft	13,1ft	16,4ft	19,7ft	23ft	26,2ft	29,5ft	32,8ft	36,1ft	39,4ft	42,7ft	45,9ft	49,2ft	52,5ft	55,8ft	59,1ft	62,3ft	65,6ft
107lx	27lx	12lx	7lx	4lx	3lx	2lx	2lx	1lx	1lx	1lx	1lx	1lx	1lx	0lx	0lx	0lx	0lx	0lx	0lx
9,9fcd	2,5fcd	1,1fcd	0,6fcd	0,4fcd	0,3fcd	0,2fcd	0,2fcd	0,1fcd	0,1fcd	0,1fcd	0,1fcd	0,1fcd	0,1fcd	0fcd	0fcd	0fcd	0fcd	0fcd	0fcd

## Intensities in 0° c-plane

0°	5°	10°	15°	20°	25°	30°	35°	40°	45°	50°	55°	60°	65°	70°	75°	80°	85°	90°	95°
107	106	105	103	99	95	87	64	47	39	31	25	39	50	39	29	20	12	2	0
100%	100%	98%	96%	93%	89%	81%	60%	44%	36%	29%	23%	36%	47%	37%	27%	19%	11%	2%	0%

## Intensities in 90° c-plane

0°	5°	10°	15°	20°	25°	30°	35°	40°	45°	50°	55°	60°	65°	70°	75°	80°	85°	90°	95°
107	106	105	103	100	96	92	86	78	64	36	21	15	10	7	7	5	3	1	0
100%	99%	98%	96%	93%	90%	86%	81%	73%	60%	34%	20%	14%	9%	7%	6%	5%	3%	1%	0%

## Intensities in 180° c-plane

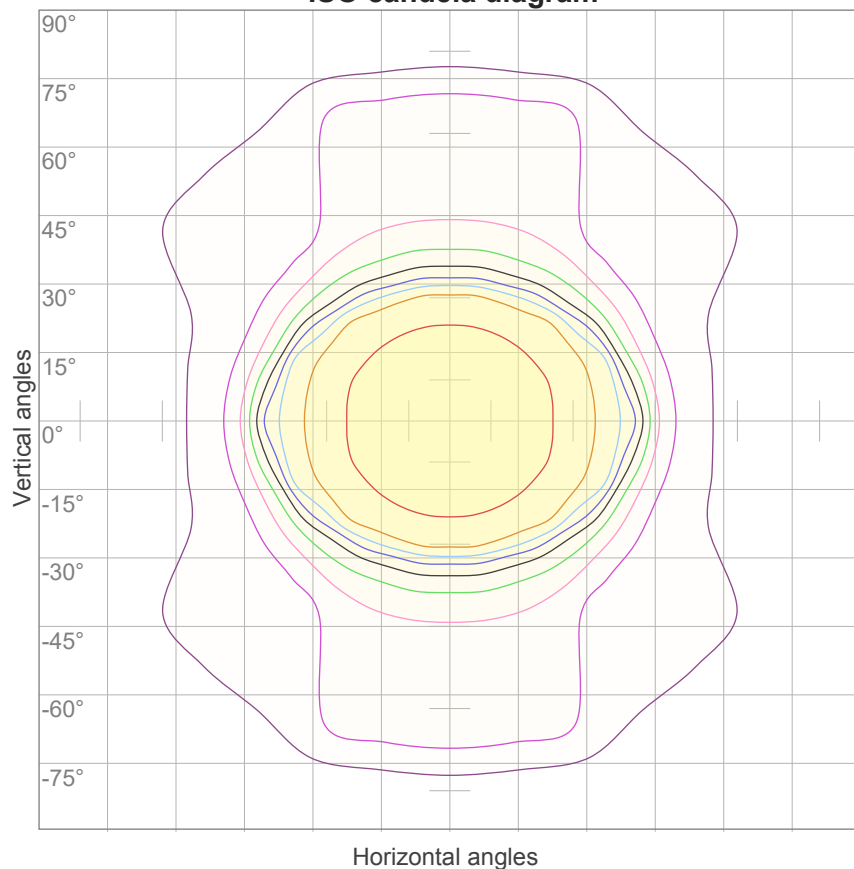
0°	5°	10°	15°	20°	25°	30°	35°	40°	45°	50°	55°	60°	65°	70°	75°	80°	85°	90°	95°
107	106	105	103	99	95	87	64	47	39	31	25	39	50	39	29	20	12	2	0
100%	100%	98%	96%	93%	89%	81%	60%	44%	36%	29%	23%	36%	47%	37%	27%	19%	11%	2%	0%

## Intensities in 270° c-plane

0°	5°	10°	15°	20°	25°	30°	35°	40°	45°	50°	55°	60°	65°	70°	75°	80°	85°	90°	95°
107	106	105	103	100	96	92	86	78	64	36	21	15	10	7	7	5	3	1	0
100%	99%	98%	96%	93%	90%	86%	81%	73%	60%	34%	20%	14%	9%	7%	6%	5%	3%	1%	0%

Beam angle 50%	Field angle 10%	Cutoff angle 2,5%	Intensity ratio in 120° cone	Intensity ratio in 90° cone
82,8°	164,6°	180,4°	74,6%	60,2%

## ISO candela diagram



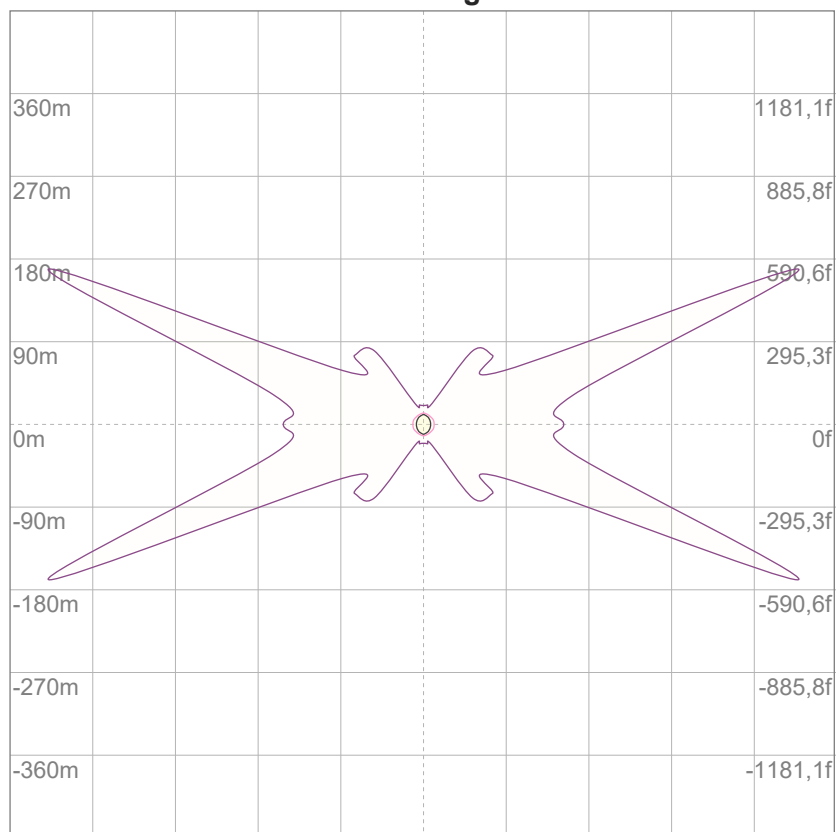
10%	11 cd
20%	21 cd
30%	32 cd
40%	43 cd
50%	53 cd
60%	64 cd
70%	75 cd
80%	85 cd
90%	96 cd

### Conditions:

Number of c-planes: 16

Candela at center: 107 cd

## ISO lux diagram



3%	32,0m lx
5%	53,4m lx
10%	0,107 lx
30%	0,320 lx
50%	0,534 lx

### Conditions:

Number of c-planes: 16

Lux at center: 1,07 lx

*Lux distribution on a surface  
when lamp is mounted at 10  
meters from the surface.*

### Glare Evaluation According to UGR

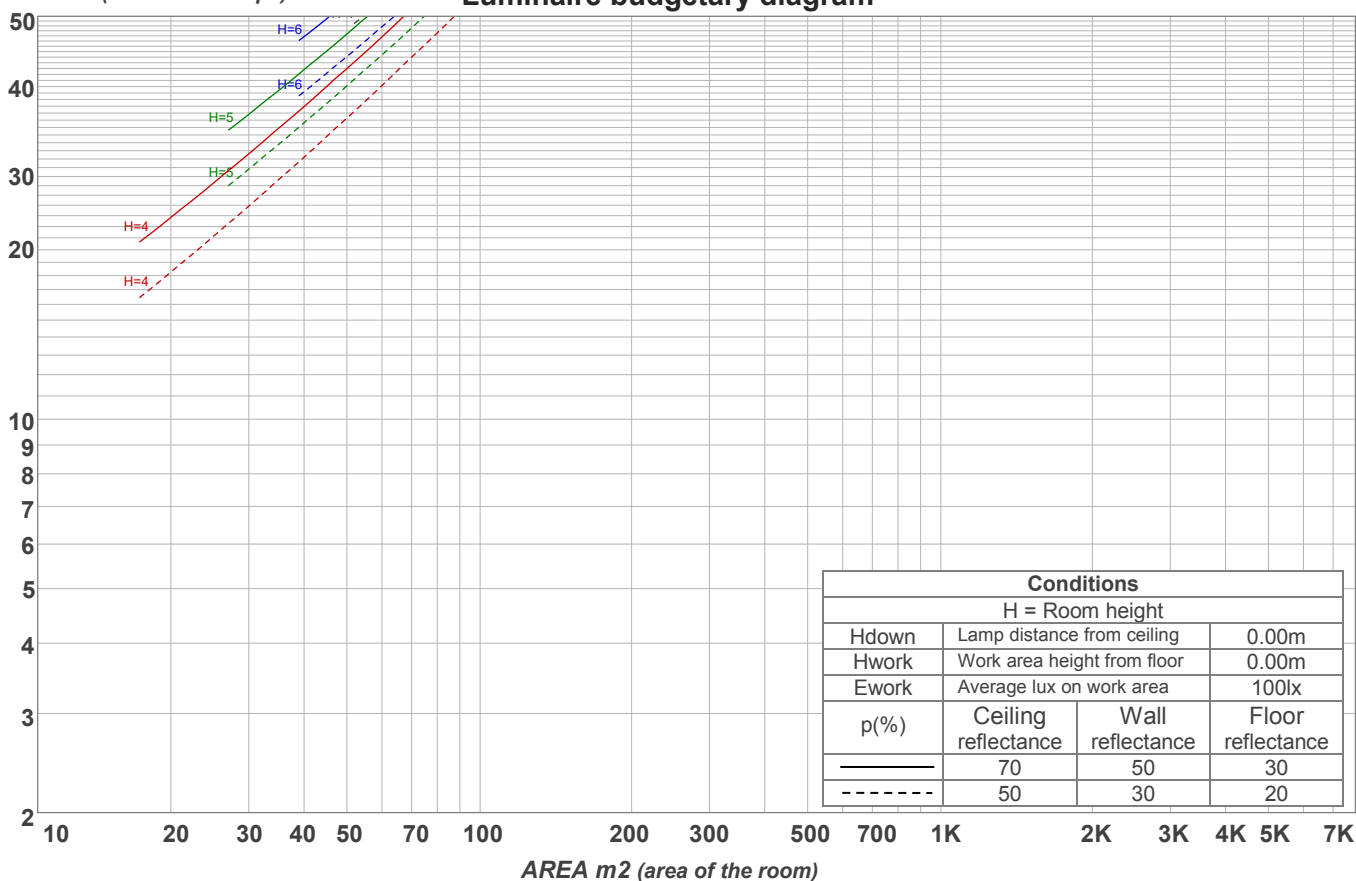
p Ceiling		70	70	50	50	30	70	70	50	50	30
p Walls		50	30	50	30	30	50	30	50	30	30
p Floor		20	20	20	20	20	20	20	20	20	20
Room size X      Y		Viewing direction at right angles to lamp axis					Viewing direction parallel to lamp axis				
2H	2H	16,4	17,5	16,6	17,8	18,0	15,1	16,2	15,3	16,5	16,8
	3H	19,8	21,1	20,3	21,4	21,6	15,5	16,7	15,9	17,0	17,2
	4H	20,8	22,0	21,2	22,2	22,5	16,0	17,1	16,4	17,4	17,7
	6H	21,5	22,5	21,8	22,8	23,2	16,9	17,9	17,2	18,2	18,6
	8H	21,6	22,7	22,0	23,0	23,4	17,2	18,2	17,5	18,5	18,9
	12H	21,7	22,7	22,1	23,1	23,5	17,4	18,4	17,7	18,7	19,2
4H	2H	16,9	18,0	17,3	18,3	18,6	15,7	16,9	16,1	17,1	17,4
	3H	20,8	21,8	21,2	22,2	22,6	17,0	18,0	17,3	18,3	18,8
	4H	21,8	22,7	22,3	23,2	23,7	17,6	18,5	18,0	18,9	19,5
	6H	22,6	23,5	23,1	23,9	24,2	18,8	19,7	19,3	20,0	20,4
	8H	22,8	23,6	23,3	24,0	24,4	19,2	20,0	19,7	20,3	20,7
	12H	23,0	23,7	23,5	24,1	24,6	19,4	20,1	19,9	20,5	21,0
8H	4H	22,2	23,0	22,7	23,4	23,8	19,0	19,8	19,5	20,2	20,5
	6H	23,2	23,8	23,7	24,3	24,8	20,4	21,0	20,9	21,5	22,0
	8H	23,5	24,0	24,0	24,6	25,2	20,9	21,4	21,4	21,9	22,6
	12H	23,7	24,2	24,3	24,7	25,3	21,2	21,7	21,8	22,2	22,8
12H	4H	22,2	22,9	22,7	23,3	23,8	19,1	19,8	19,6	20,2	20,7
	6H	23,3	23,8	23,8	24,3	25,0	20,6	21,2	21,1	21,7	22,3
	8H	23,6	24,1	24,2	24,6	25,2	21,2	21,7	21,8	22,2	22,8
Variation of the observer position for the luminaire distance S											
S = 1.0H		0,1 / -0,1					0,2 / -0,2				
S = 1.5H		0,4 / -0,5					0,7 / -0,3				
S = 2.0H		0,6 / -0,8					1,4 / -0,6				
Standard table		n/a					n/a				
Correction summand		n/a					n/a				
Corrected glare indices referring to 250 lm total luminous flux											

## Coefficients of Utilization

Ceiling reflectance	80				70				50			30			10			0
Wall reflectance	70	50	30	10	70	50	30	10	50	30	10	50	30	10	50	30	10	0
Floor reflectance	20	20	20	20	20	20	20	20	20	20	20	20	20	20	20	20	20	0
RCR	(RCR: Room Cavity Ratio) Room Values are expressed as percentage of Lumens delivered to the task surface																	
0	119	119	119	119	116	116	116	116	110	110	110	105	105	105	101	101	101	98
1	108	103	98	94	105	100	96	92	96	92	89	91	89	86	87	85	83	81
2	98	90	83	77	95	88	81	76	84	79	74	80	76	72	77	74	70	68
3	90	80	72	65	87	78	70	64	75	68	63	72	66	62	69	64	60	58
4	83	71	63	56	81	70	62	56	67	60	55	65	59	54	62	57	53	51
5	77	64	56	49	75	63	55	49	61	54	48	59	53	48	57	51	47	45
6	72	59	50	44	70	58	49	44	56	48	43	54	47	43	52	47	42	40
7	67	54	45	39	65	53	45	39	51	44	39	50	43	38	48	42	38	36
8	62	49	41	36	61	49	41	35	47	40	35	46	39	35	45	39	35	33
9	59	46	38	32	57	45	37	32	44	37	32	43	36	32	42	36	32	30
10	55	42	35	30	54	42	34	30	41	34	29	40	34	29	39	33	29	27

LAMPS (number of lamps)

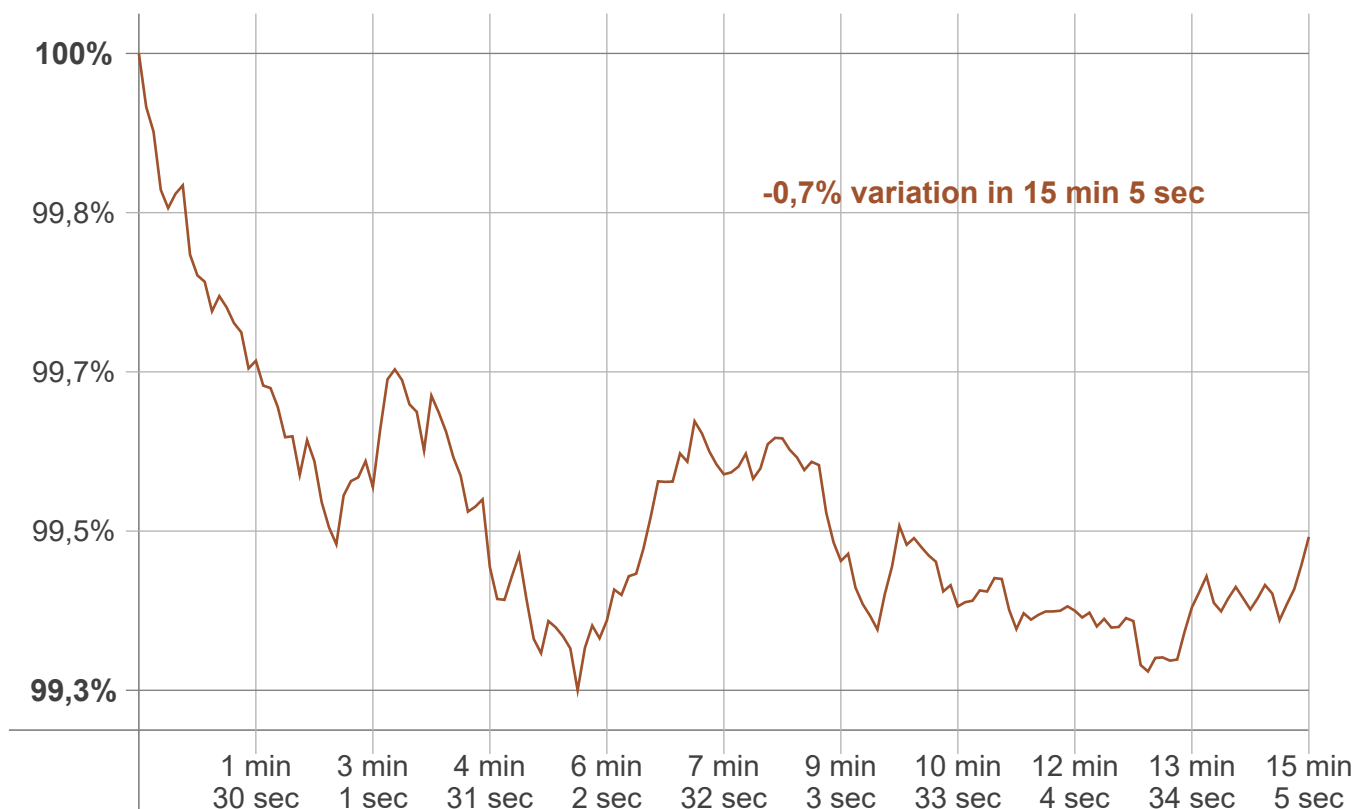
Luminaire budgetary diagram



## Zonal Lumen Summary

0°-10°	10°-20°	20°-30°	30°-40°	40°-50°	50°-60°	60°-70°	70°-80°	80°-90°
10,1 lm	29,0 lm	44,1 lm	48,0 lm	34,6 lm	21,1 lm	25,9 lm	23,4 lm	10,3 lm
90°-100°	100°-110°	110°-120°	120°-130°	130°-140°	140°-150°	150°-160°	160°-170°	170°-180°
1,76 lm	0,500 lm	0,404 lm	0,365 lm	0,315 lm	0,255 lm	0,188 lm	0,115 lm	0,039 lm

### Warmup curve



### Warmup result

Warmup time:	Lamp stabilized in 15 min 5 sec
Warmup variation	-0,7%

### Warmup conditions

Stable period:	15 min
Stable change max:	2,0%
Minimum time:	15 min

### Color temperature change

CCT start	CCT change	CCT end
2730 K	-3 K	2727 K

### Output change

Output start	Output change	Output end
251 lm	-1 lm	250 lm