



Light efficiency:

86 Lumen/Watt

Light quality:

CRI: 93,3

Color temperature:

6738 K

Output: 825 lm

Peak: 2077 cd

Power: 9,6 W

PF: 1,0



Product name:

Pegasus-5_0510_965_Inlay-Lens-Wallwasher

Item number:

FL/L2C/09E/0510/965/ILWW

Date and time:

25.08.2025 12:34:58

Description:

Tolerances:

Lumen +/-4%

Candela +/-2,5%

Colour Temp +/-35 Kelvin

CRI +/-0,7

Angular Resolution: 1 Degree Step

Last Calibration 13.10.2023

Tester:

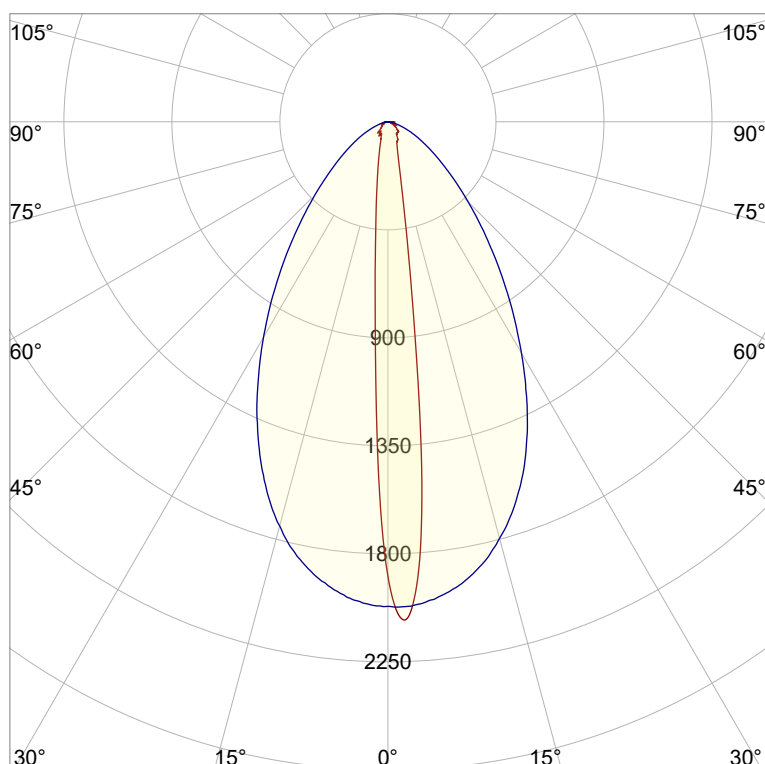
Peter Ulrich

Test Site:

Lichtlabor

Gaustrasse 13

55411 Bingen am Rhein

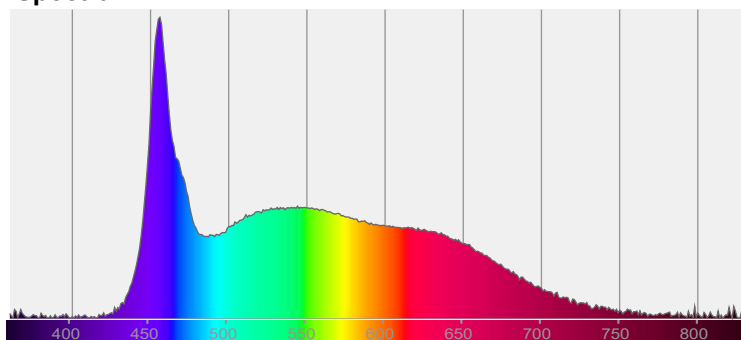


CIE 1931

x: 0,309

y: 0,324

Spectra

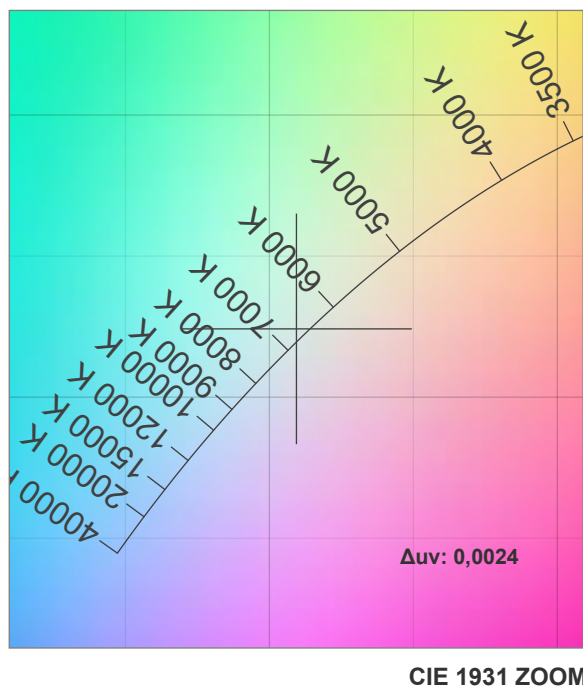
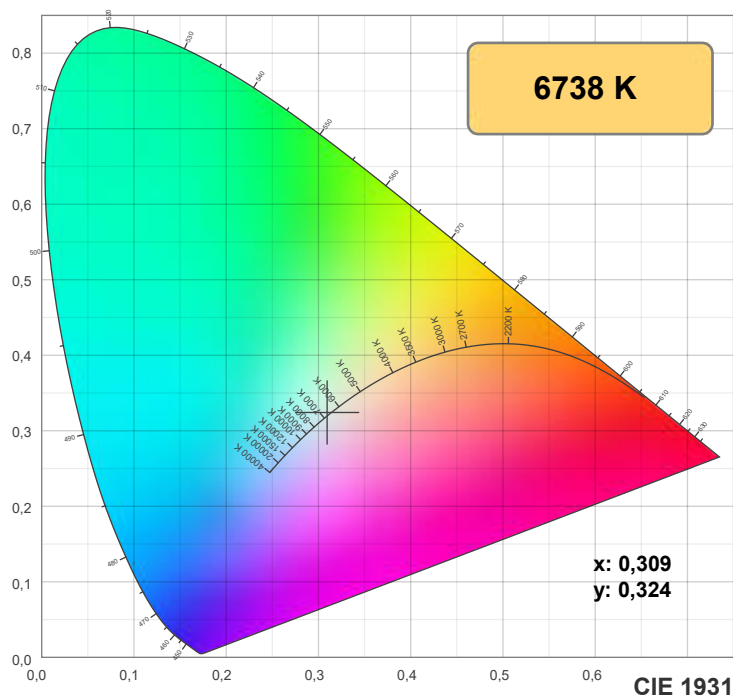


Power

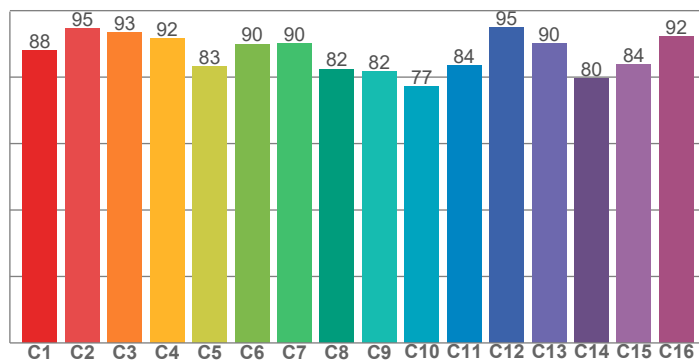
Voltage: 48,0 V

Current: 0,200 A

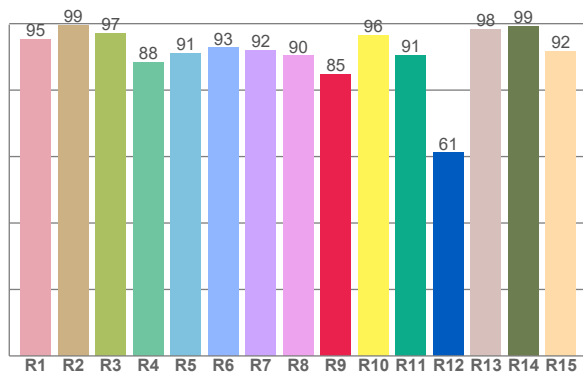
Frequency: 0 Hz



TM30: 87,2



CRI: 93,3 (R1-R8)



CRI R values, only R1-R8 are used to calculate final CRI value

R1	R2	R3	R4	R5	R6	R7	R8	R9	R10	R11	R12	R13	R14	R15
95,2	99,5	97,1	88,4	90,9	92,7	91,9	90,3	84,6	96,5	90,6	61,1	98,4	99,2	91,7

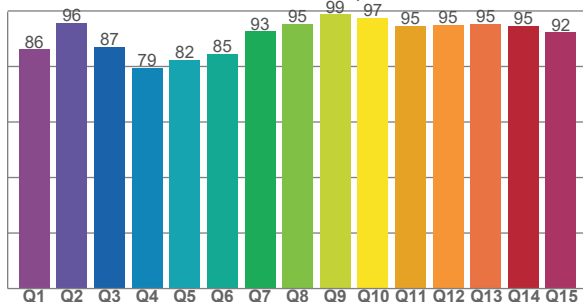
TM30 C values, 16 binned values out of total of 99 C values

C1	C2	C3	C4	C5	C6	C7	C8	C9	C10	C11	C12	C13	C14	C15	C16
88,1	94,5	93,4	91,7	83,1	90,0	90,0	82,5	81,7	77,3	83,6	95,1	90,0	79,6	83,8	92,2

CQS Q values

Q1	Q2	Q3	Q4	Q5	Q6	Q7	Q8	Q9	Q10	Q11	Q12	Q13	Q14	Q15
86,2	95,6	87,0	79,5	82,3	84,7	92,6	95,3	98,8	97,4	94,6	94,9	95,4	94,6	92,3

CQS: 89,7



Color parameters

Color temperature	Color rendering index	Red component	Color fidelity	Color gamut	Color quality scale	Color coordinate cie 1931	Color coordinate cie 1931	Color coordinate	Color coordinate	Color deviation from black body
CCT	CRI	CRI R9	TM30 Rf	TM30 Rg	CQS	x	y	u	v	Δuv
6738 K	93,3	84,6	87,2	95,8	89,7	0,309	0,324	0,197	0,310	0,0024



TM30 details



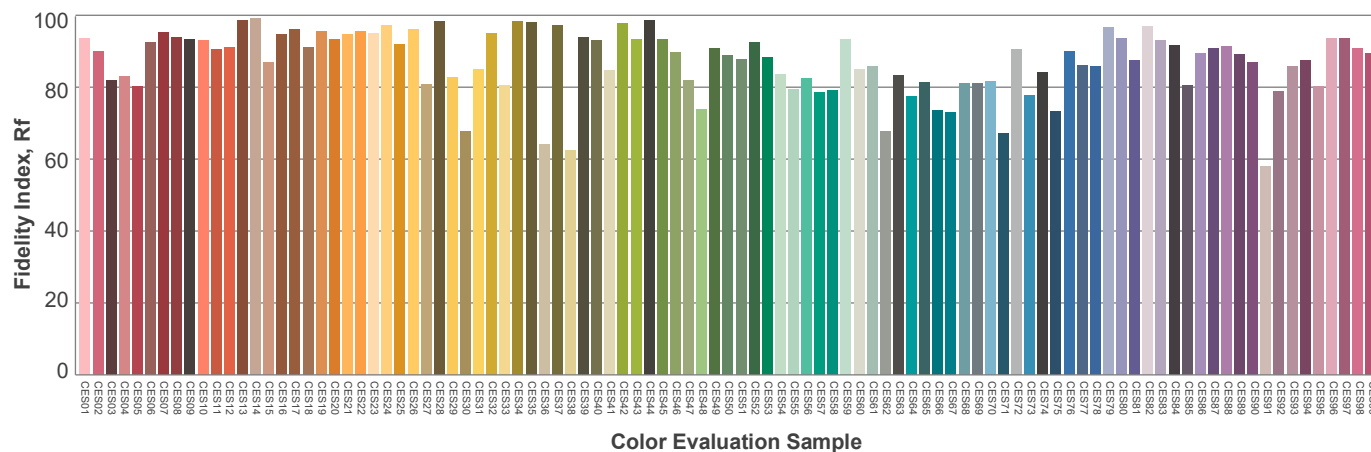
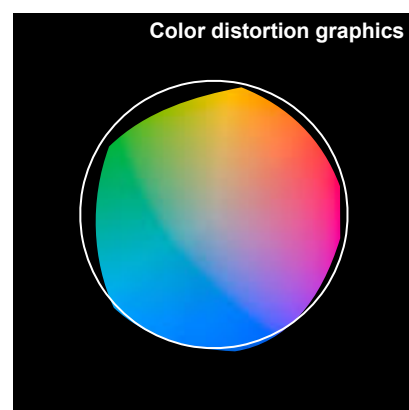
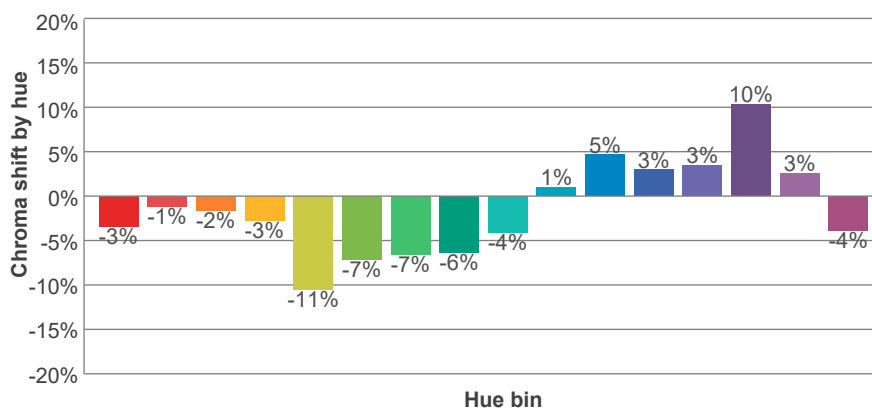
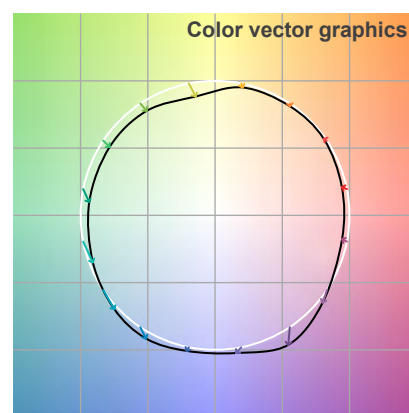
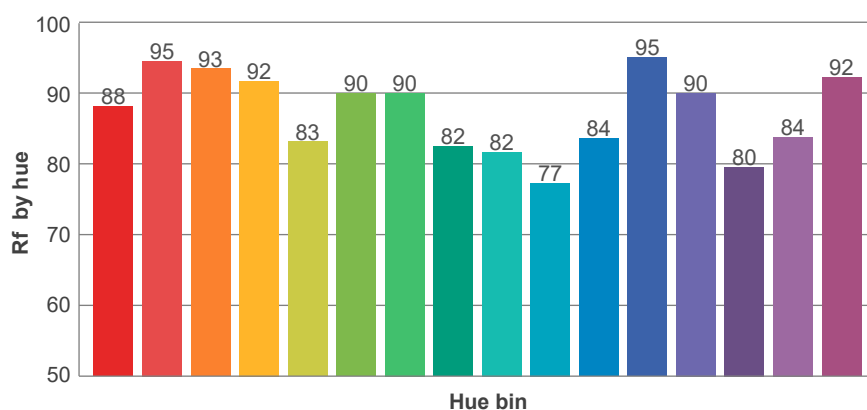
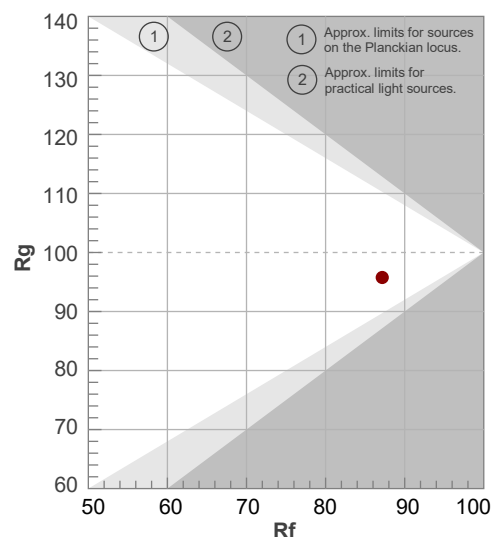
Rf 87,2

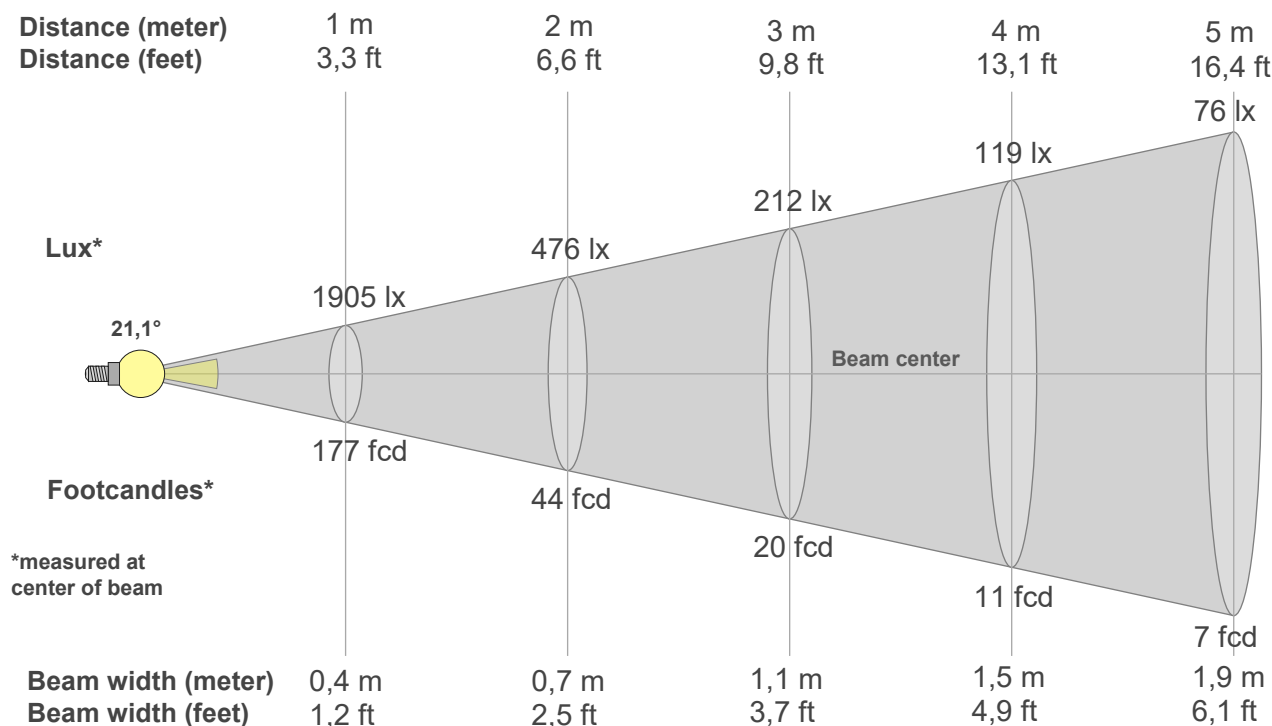
Fidelity index Rf

Rg 95,8

Gamut index Rg

Hue Bin	R _f	Graphic shifts (%)	
		Chroma	Hue
1	88	-3%	2%
2	95	-1%	3%
3	93	-2%	-1%
4	92	-3%	-2%
5	83	-11%	-3%
6	90	-7%	-1%
7	90	-7%	1%
8	82	-6%	9%
9	82	-4%	16%
10	77	1%	16%
11	84	5%	8%
12	95	3%	-1%
13	90	3%	-5%
14	80	10%	-8%
15	84	3%	-9%
16	92	-4%	1%





Beam intensities from 1-20m

1m	2m	3m	4m	5m	6m	7m	8m	9m	10m	11m	12m	13m	14m	15m	16m	17m	18m	19m	20m
3,3ft	6,6ft	9,8ft	13,1ft	16,4ft	19,7ft	23ft	26,2ft	29,5ft	32,8ft	36,1ft	39,4ft	42,7ft	45,9ft	49,2ft	52,5ft	55,8ft	59,1ft	62,3ft	65,6ft
1905lx	476lx	212lx	119lx	76lx	53lx	39lx	30lx	24lx	19lx	16lx	13lx	11lx	10lx	8lx	7lx	7lx	6lx	5lx	5lx
177fcd	44,2fcd	19,7fcd	11,1fcd	7,1fcd	4,9fcd	3,6fcd	2,8fcd	2,2fcd	1,8fcd	1,5fcd	1,2fcd	1fcd	0,9fcd	0,8fcd	0,7fcd	0,6fcd	0,5fcd	0,5fcd	0,4fcd

Intensities in 0° c-plane

0°	2°	4°	6°	8°	10°	12°	14°	16°	18°	20°	22°	24°	26°	28°	30°	32°	34°	36°	38°
1905	2075	1856	1300	706	410	271	199	156	130	113	100	92	88	87	82	73	64	62	61
100%	109%	97%	68%	37%	22%	14%	10%	8%	7%	6%	5%	5%	5%	5%	4%	4%	3%	3%	3%

Intensities in 90° c-plane

0°	2°	4°	6°	8°	10°	12°	14°	16°	18°	20°	22°	24°	26°	28°	30°	32°	34°	36°	38°
1905	2014	1998	1970	1936	1894	1843	1780	1708	1626	1536	1439	1342	1239	1137	1037	939	844	756	671
100%	106%	105%	103%	102%	99%	97%	93%	90%	85%	81%	76%	70%	65%	60%	54%	49%	44%	40%	35%

Intensities in 180° c-plane

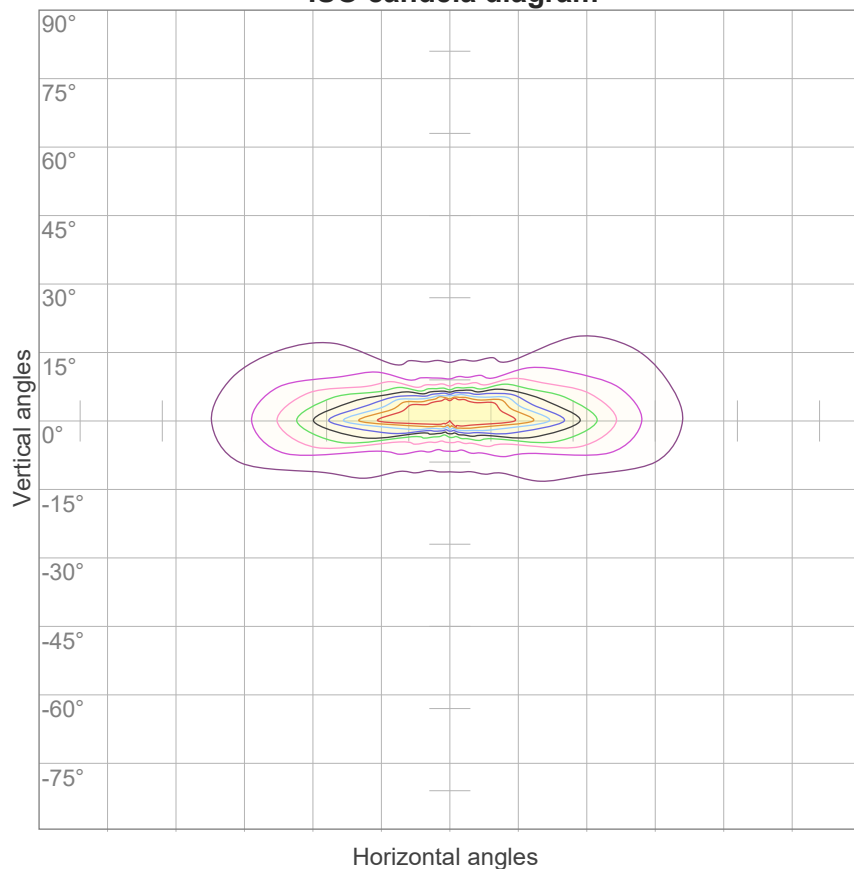
0°	2°	4°	6°	8°	10°	12°	14°	16°	18°	20°	22°	24°	26°	28°	30°	32°	34°	36°	38°
1905	1304	763	493	350	258	201	159	127	107	89	79	72	62	57	61	69	60	53	51
100%	68%	40%	26%	18%	14%	11%	8%	7%	6%	5%	4%	4%	3%	3%	3%	4%	3%	3%	3%

Intensities in 270° c-plane

0°	2°	4°	6°	8°	10°	12°	14°	16°	18°	20°	22°	24°	26°	28°	30°	32°	34°	36°	38°
1905	2021	2012	1992	1965	1930	1885	1828	1766	1694	1613	1523	1426	1323	1218	1113	1010	913	819	731
100%	106%	106%	105%	103%	101%	99%	96%	93%	89%	85%	80%	75%	69%	64%	58%	53%	48%	43%	38%

Beam angle 50%	Field angle 10%	Cutoff angle 2,5%	Intensity ratio in 120° cone	Intensity ratio in 90° cone
21,1°	52,2°	110,3°	89,3%	75,2%

ISO candela diagram



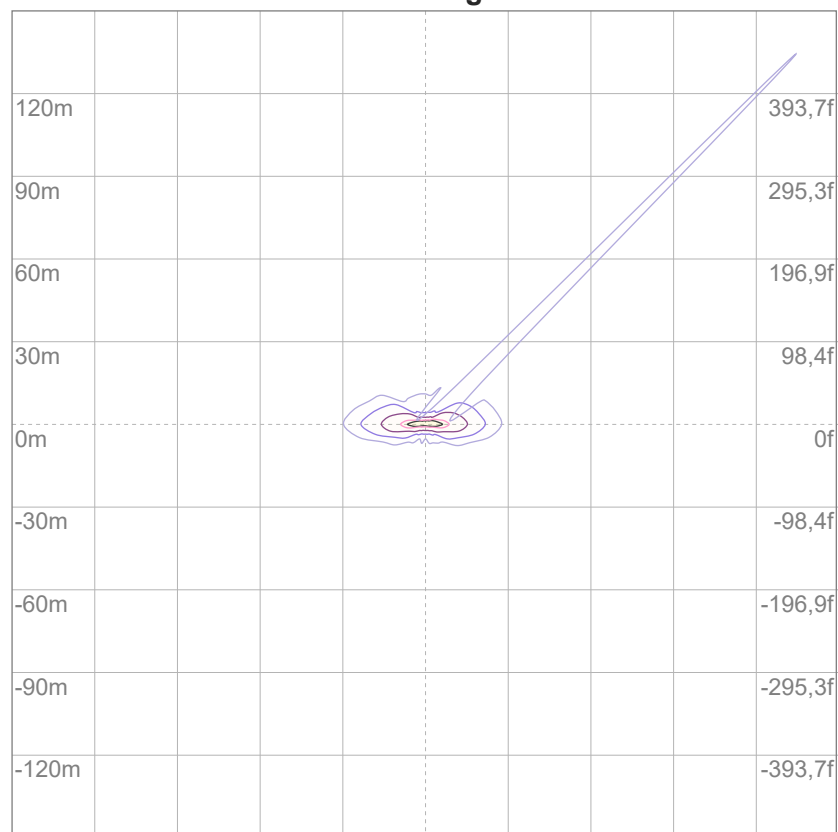
10%	190 cd
20%	381 cd
30%	571 cd
40%	762 cd
50%	952 cd
60%	1143 cd
70%	1333 cd
80%	1524 cd
90%	1714 cd

Conditions:

Number of c-planes: 16

Candela at center: 1905 cd

ISO lux diagram



3%	0,571 lx
5%	0,952 lx
10%	1,90 lx
30%	5,71 lx
50%	9,52 lx

Conditions:

Number of c-planes: 16

Lux at center: 19,0 lx

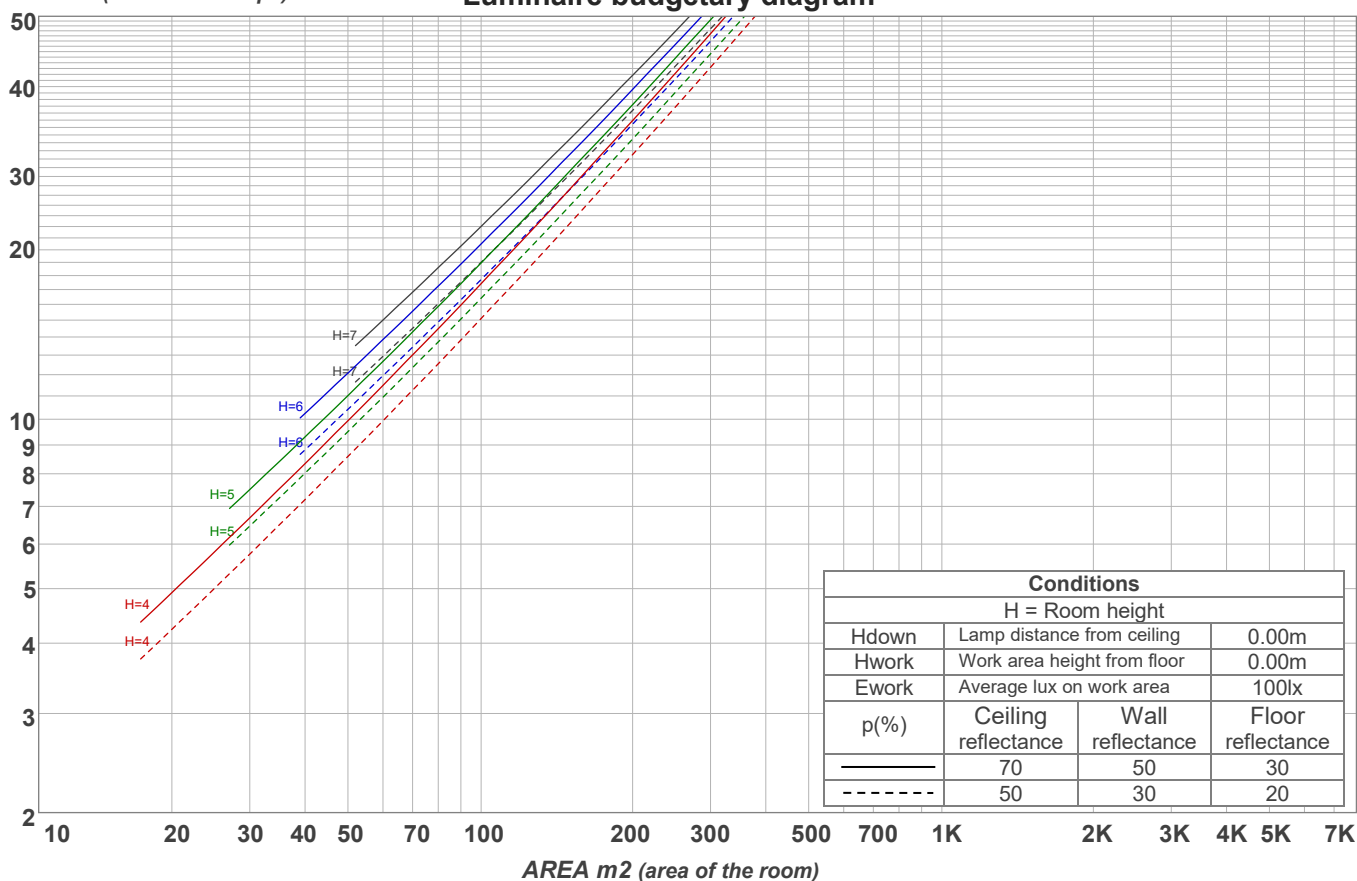
Lux distribution on a surface when lamp is mounted at 10 meters from the surface.

Coefficients of Utilization

Ceiling reflectance	80				70				50			30			10			0
Wall reflectance	70	50	30	10	70	50	30	10	50	30	10	50	30	10	50	30	10	0
Floor reflectance	20	20	20	20	20	20	20	20	20	20	20	20	20	20	20	20	20	0
RCR	(RCR: Room Cavity Ratio) Room Values are expressed as percentage of Lumens delivered to the task surface																	
0	119	119	119	119	116	116	116	116	111	111	111	106	106	106	102	102	102	100
1	111	107	104	101	108	105	102	99	101	98	96	97	95	93	94	92	90	88
2	104	97	92	88	101	96	91	87	92	88	85	89	86	83	86	83	81	79
3	97	89	83	78	95	88	82	77	85	80	76	82	78	74	80	76	73	71
4	91	82	75	70	89	81	74	69	78	73	68	76	71	68	74	70	67	65
5	86	76	69	63	84	75	68	63	73	67	63	71	66	62	69	65	61	60
6	81	71	63	58	79	70	63	58	68	62	58	67	61	57	65	60	57	55
7	77	66	59	54	75	65	59	54	64	58	54	63	57	53	61	57	53	51
8	73	62	55	50	71	61	55	50	60	54	50	59	54	50	58	53	50	48
9	69	58	52	47	68	58	52	47	57	51	47	56	51	47	55	50	47	45
10	66	55	49	45	65	55	49	44	54	48	44	53	48	44	52	48	44	43

LAMPS (number of lamps)

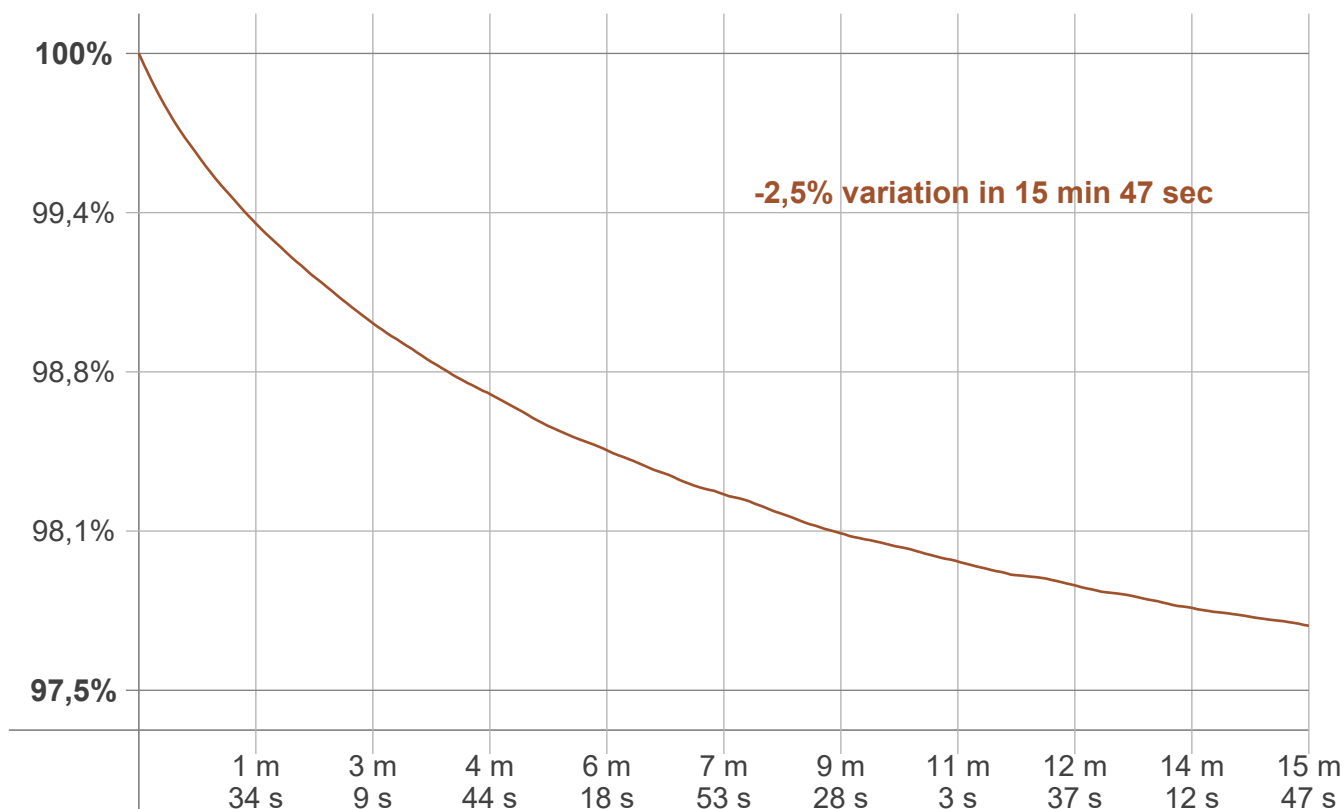
Luminaire budgetary diagram



Zonal Lumen Summary

0°-10°	10°-20°	20°-30°	30°-40°	40°-50°	50°-60°	60°-70°	70°-80°	80°-90°
119 lm	164 lm	151 lm	130 lm	102 lm	69,8 lm	42,3 lm	26,3 lm	19,3 lm
90°-100°	100°-110°	110°-120°	120°-130°	130°-140°	140°-150°	150°-160°	160°-170°	170°-180°
0,041 lm	0,000 lm	0,000 lm	0,000 lm	0,000 lm	0,000 lm	0,000 lm	0,000 lm	0,000 lm

Warmup curve



Warmup result

Warmup time:	Lamp stabilized in 15 min 47 sec
Warmup variation	-2,5%

Warmup conditions

Stable period:	15 min
Stable change max:	2,0%
Minimum time:	15 min

Color temperature change

CCT start	CCT change	CCT end
6708 K	+30 K	6738 K

Output change

Output start	Output change	Output end
844 lm	-20 lm	825 lm