

Light efficiency:

70 Lumen/Watt

Light quality:

CRI: 35,8

Color temperature:

12117 K

Output: 603 lm

Peak: 203 cd

Power: 8,6 W

PF: 1,0



Product name:

Defiant-0508-RGB-CST

Item number:

FLNP/L22A0508/RGB/CST

Date and time:

30.06.2020 11:55:35

Description:

Rank: R2G2B4/RC2GA2BA5/A

Toleranzen:

Lumen +/-4%

Candela +/-2,5%

Colour Temp +/-35 K

CRI +/-0,7

Angular Resolution 1 Grad Step

Last Calibration 20.05.2020

Pruefer:

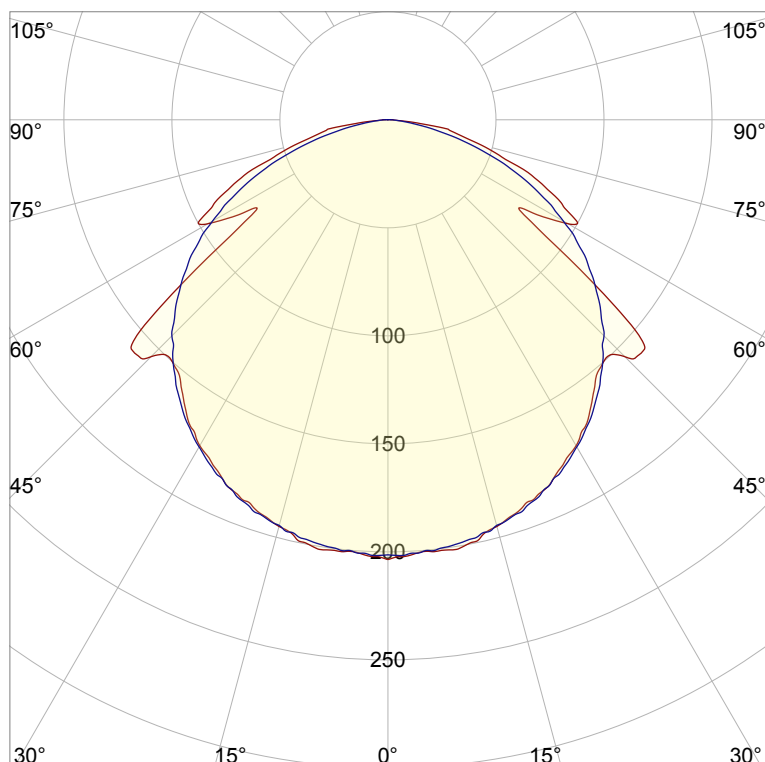
Peter Ulrich

Pruefort:

Lichtlabor

Gaustrasse 13

55411 Bingen am Rhein

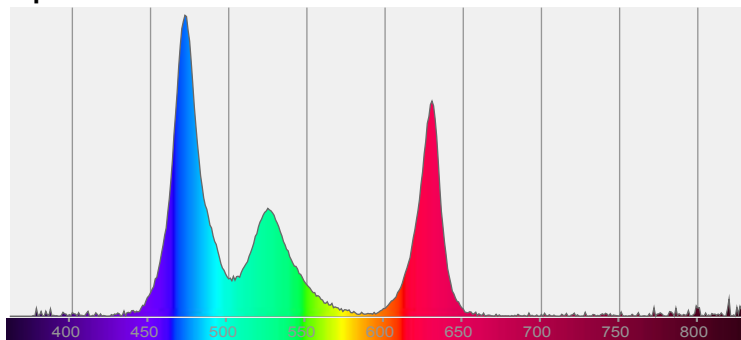


CIE 1931

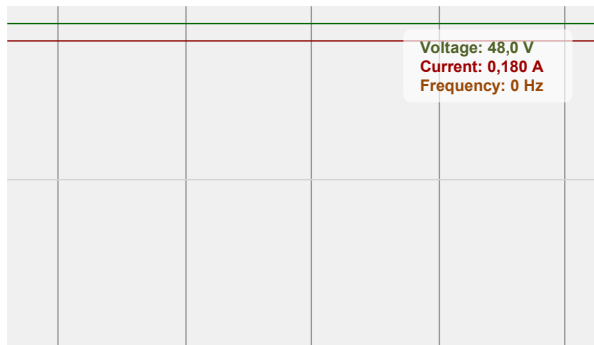
x: 0,266

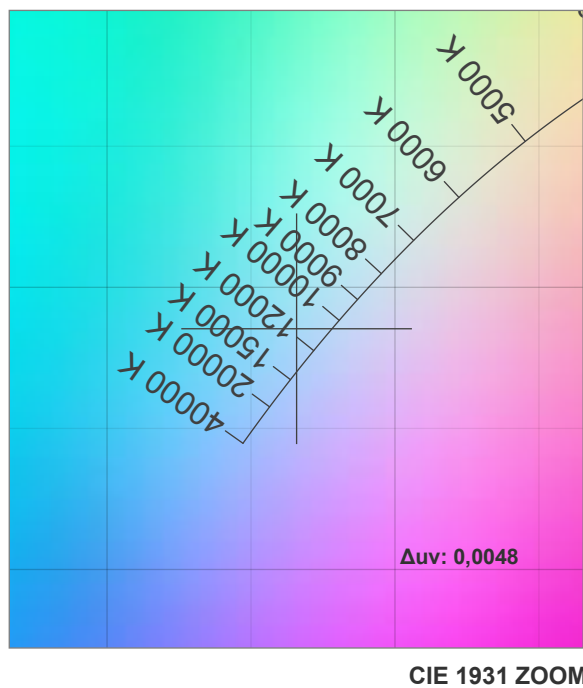
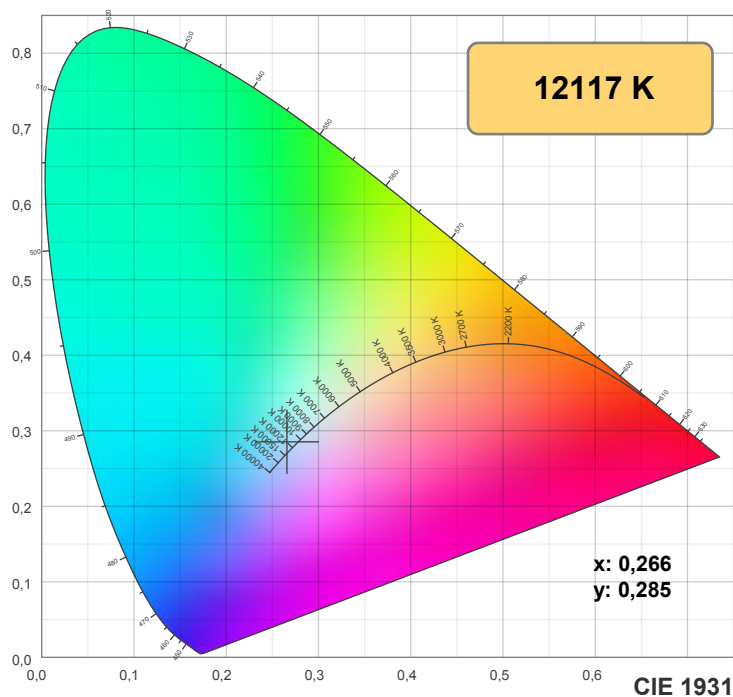
y: 0,285

Spectra



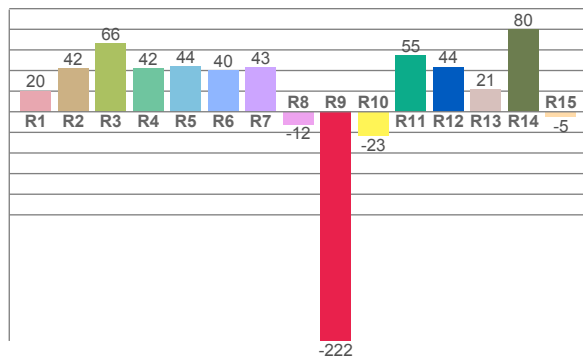
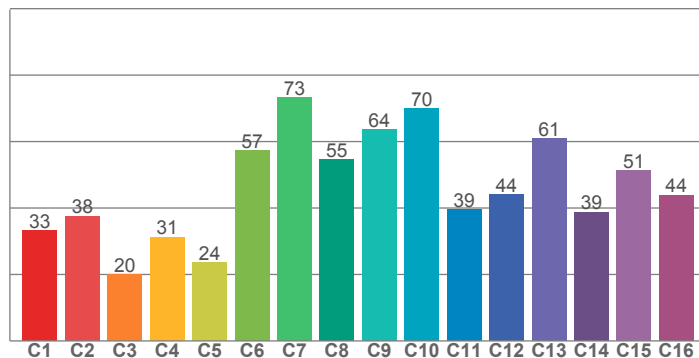
Power





TM30: 45,1

CRI: 35,8 (R1-R8)



CRI R values, only R1-R8 are used to calculate final CRI value

R1	R2	R3	R4	R5	R6	R7	R8	R9	R10	R11	R12	R13	R14	R15
20,3	42,2	66,1	42,4	43,8	40,4	43,4	-12,1	-222,3	-23,1	55,1	43,6	21,4	79,7	-4,7

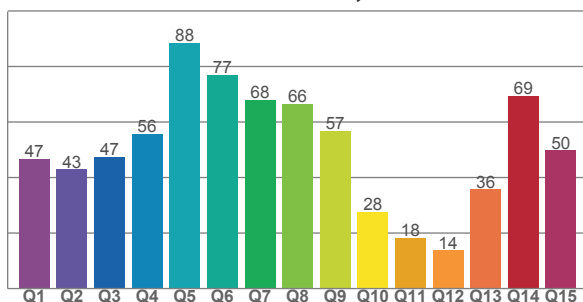
TM30 C values, 16 binned values out of total of 99 C values

C1	C2	C3	C4	C5	C6	C7	C8	C9	C10	C11	C12	C13	C14	C15	C16
33,1	37,6	20,0	31,3	23,6	57,3	73,3	54,6	63,6	69,9	39,4	44,0	60,9	38,8	51,2	43,9

CQS Q values

Q1	Q2	Q3	Q4	Q5	Q6	Q7	Q8	Q9	Q10	Q11	Q12	Q13	Q14	Q15
46,7	42,9	47,3	55,6	88,3	76,9	68,0	66,5	56,8	27,7	18,1	13,7	35,7	69,5	49,7

CQS: 46,2



Color parameters

Color temperature	Color rendering index	Red component	Color fidelity	Color gamut	Color quality scale	Color coordinate cie 1931	Color coordinate cie 1931	Color coordinate	Color coordinate	Color deviation from black body
CCT	CRI	CRI R9	TM30 Rf	TM30 Rg	CQS	x	y	u	v	Δuv
12117 K	35,8	-222,3	45,1	88,0	46,2	0,266	0,285	0,180	0,291	0,0048

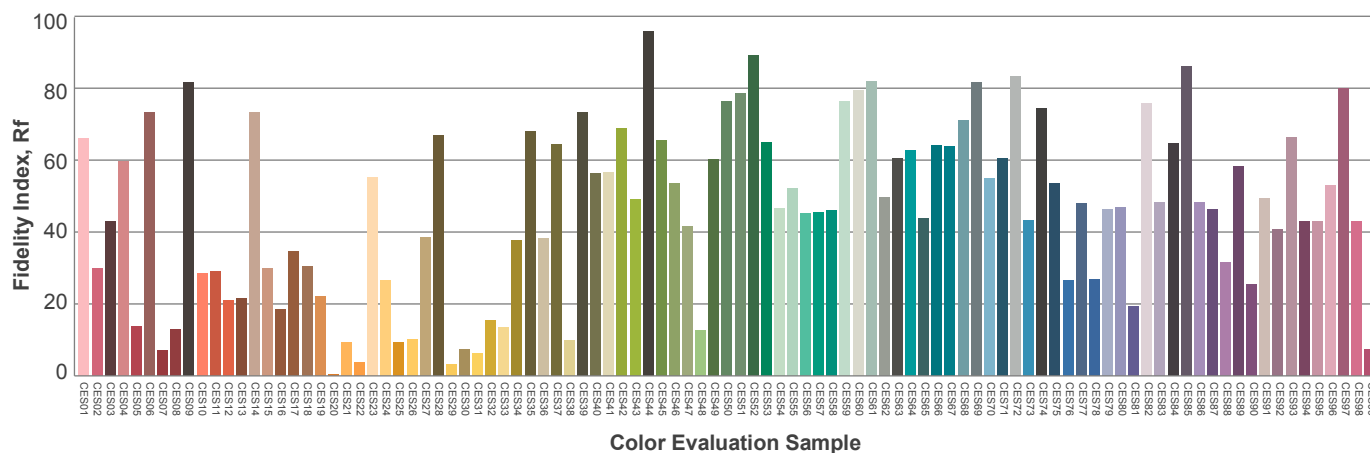
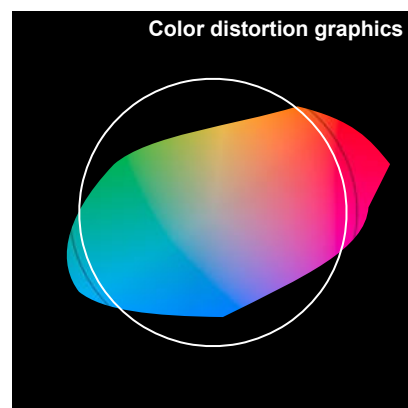
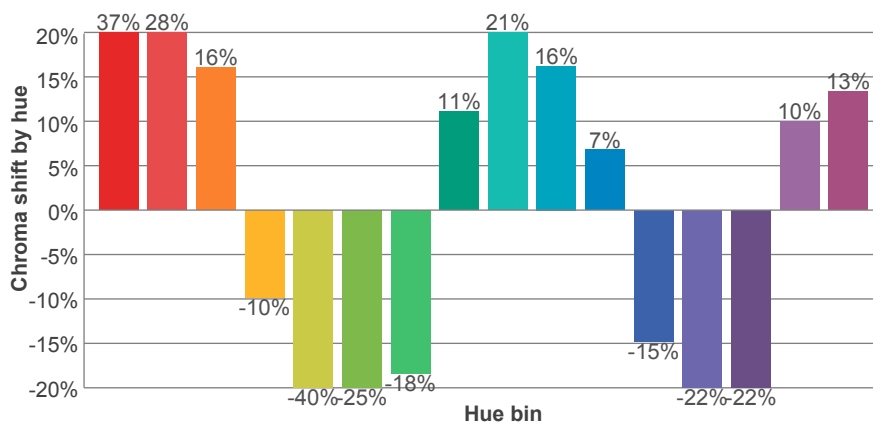
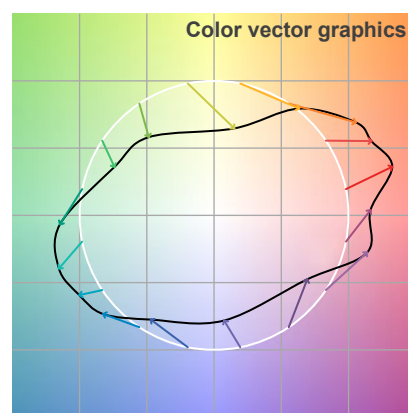
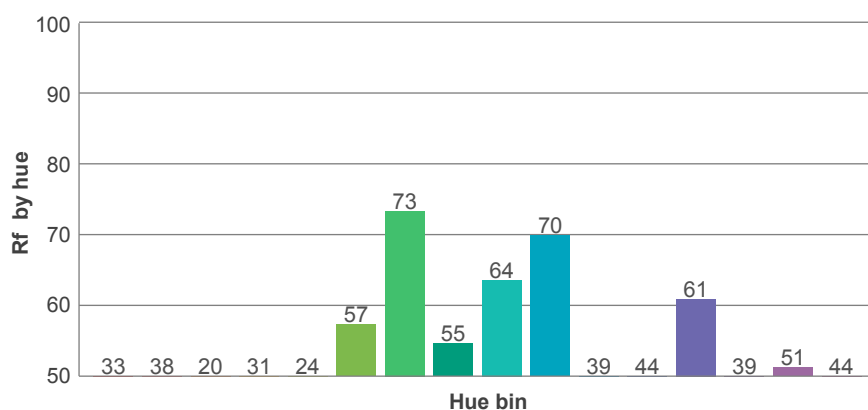
Rf 45,1

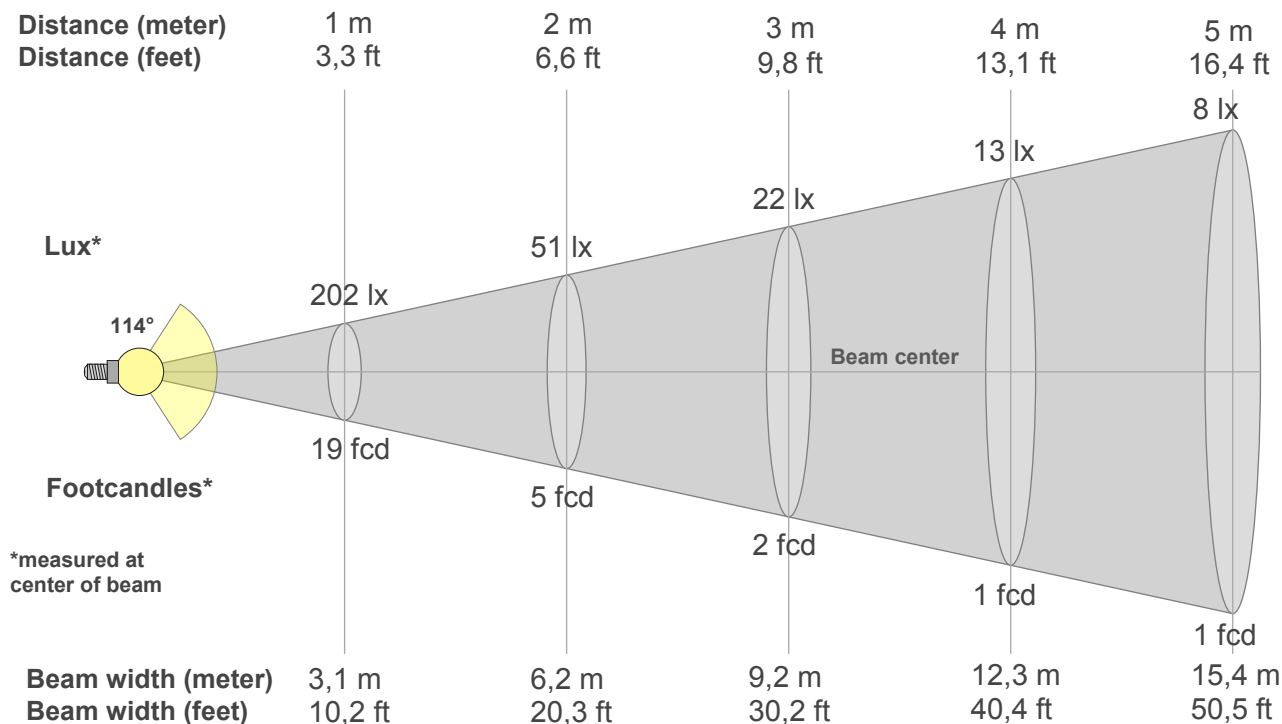
Fidelity index Rf

Rg 88,0

Gamut index Rg

Hue Bin	R _f	Graphic shifts (%)	
		Chroma	Hue
1	33	37%	10%
2	38	28%	-19%
3	20	16%	-49%
4	31	-10%	-47%
5	24	-40%	-27%
6	57	-25%	8%
7	73	-18%	11%
8	55	11%	29%
9	64	21%	16%
10	70	16%	-6%
11	39	7%	-28%
12	44	-15%	-31%
13	61	-22%	-8%
14	39	-22%	31%
15	51	10%	40%
16	44	13%	26%





Beam intensities from 1-20m

1m	2m	3m	4m	5m	6m	7m	8m	9m	10m	11m	12m	13m	14m	15m	16m	17m	18m	19m	20m
3,3ft	6,6ft	9,8ft	13,1ft	16,4ft	19,7ft	23ft	26,2ft	29,5ft	32,8ft	36,1ft	39,4ft	42,7ft	45,9ft	49,2ft	52,5ft	55,8ft	59,1ft	62,3ft	65,6ft
202lx	51lx	22lx	13lx	8lx	6lx	4lx	3lx	2lx	2lx	2lx	1lx	1lx	1lx	1lx	1lx	1lx	1lx	1lx	1lx
18,8fcd	4,7fcd	2,1fcd	1,2fcd	0,8fcd	0,5fcd	0,4fcd	0,3fcd	0,2fcd	0,2fcd	0,2fcd	0,1fcd	0,1fcd	0,1fcd	0,1fcd	0,1fcd	0,1fcd	0,1fcd	0,1fcd	0fcd

Intensities in 0° c-plane

0°	5°	10°	15°	20°	25°	30°	35°	40°	45°	50°	55°	60°	65°	70°	75°	80°	85°	90°	95°
202	201	201	195	188	182	174	163	152	155	145	78	96	87	66	44	29	8	1	0
100%	99%	99%	96%	93%	90%	86%	81%	75%	77%	71%	39%	47%	43%	33%	22%	15%	4%	1%	0%

Intensities in 90° c-plane

0°	5°	10°	15°	20°	25°	30°	35°	40°	45°	50°	55°	60°	65°	70°	75°	80°	85°	90°	95°
202	200	199	194	190	183	175	165	154	141	127	112	94	74	54	33	15	5	1	0
100%	99%	98%	96%	94%	90%	86%	82%	76%	70%	63%	55%	46%	37%	27%	16%	8%	2%	1%	0%

Intensities in 180° c-plane

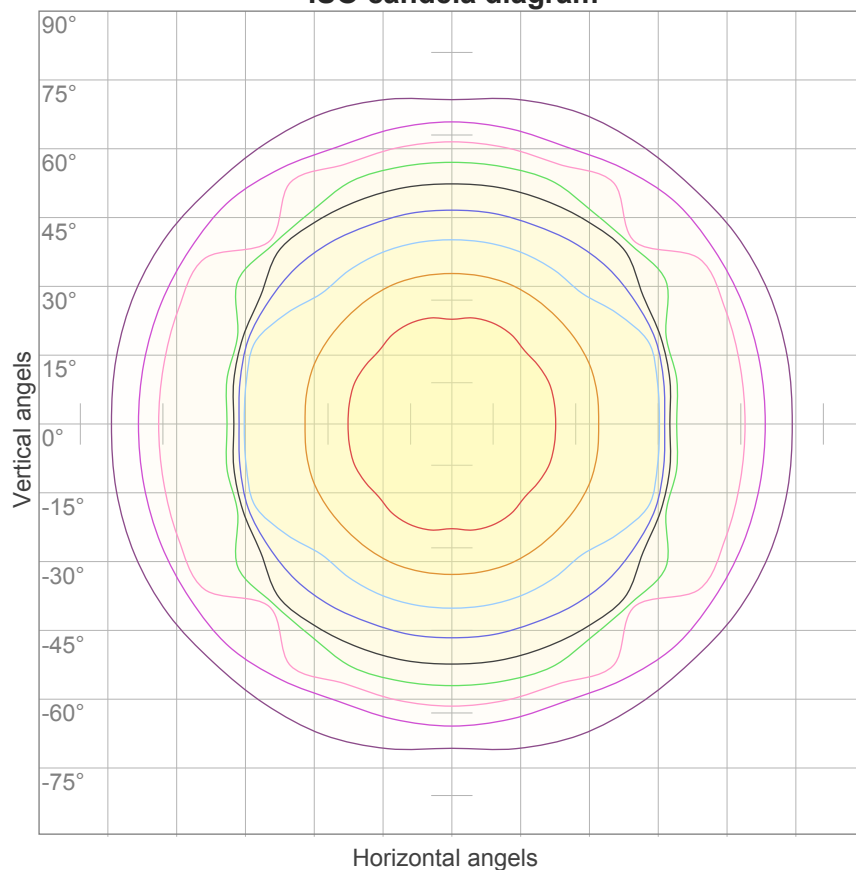
0°	5°	10°	15°	20°	25°	30°	35°	40°	45°	50°	55°	60°	65°	70°	75°	80°	85°	90°	95°
202	201	201	195	188	182	174	163	152	155	145	78	96	87	66	44	29	8	1	0
100%	99%	99%	96%	93%	90%	86%	81%	75%	77%	71%	39%	47%	43%	33%	22%	15%	4%	1%	0%

Intensities in 270° c-plane

0°	5°	10°	15°	20°	25°	30°	35°	40°	45°	50°	55°	60°	65°	70°	75°	80°	85°	90°	95°
202	200	199	194	190	183	175	165	154	141	127	112	94	74	54	33	15	5	1	0
100%	99%	98%	96%	94%	90%	86%	82%	76%	70%	63%	55%	46%	37%	27%	16%	8%	2%	1%	0%

Beam angle 50%	Field angle 10%	Cutoff angle 2,5%	Intensity ratio in 120° cone	Intensity ratio in 90° cone
114°	163,4°	173,8°	78,0%	52,4%

ISO candela diagram



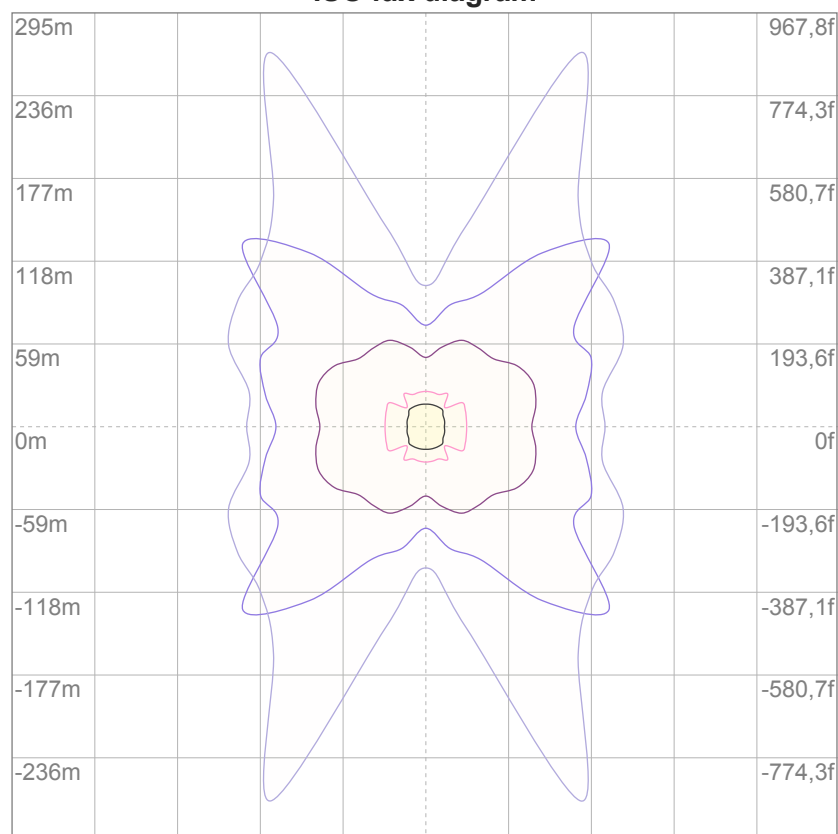
10%	20 cd
20%	40 cd
30%	61 cd
40%	81 cd
50%	101 cd
60%	121 cd
70%	142 cd
80%	162 cd
90%	182 cd

Conditions:

Number of c-planes: 16

Candela at center: 202 cd

ISO lux diagram



3%	60,7m lx
5%	0,101 lx
10%	0,202 lx
30%	0,607 lx
50%	1,01 lx

Conditions:

Number of c-planes: 16

Lux at center: 2,02 lx

*Lux distribution on a surface
when lamp is mounted at 10
meters from the surface.*

Glare Evaluation According to UGR

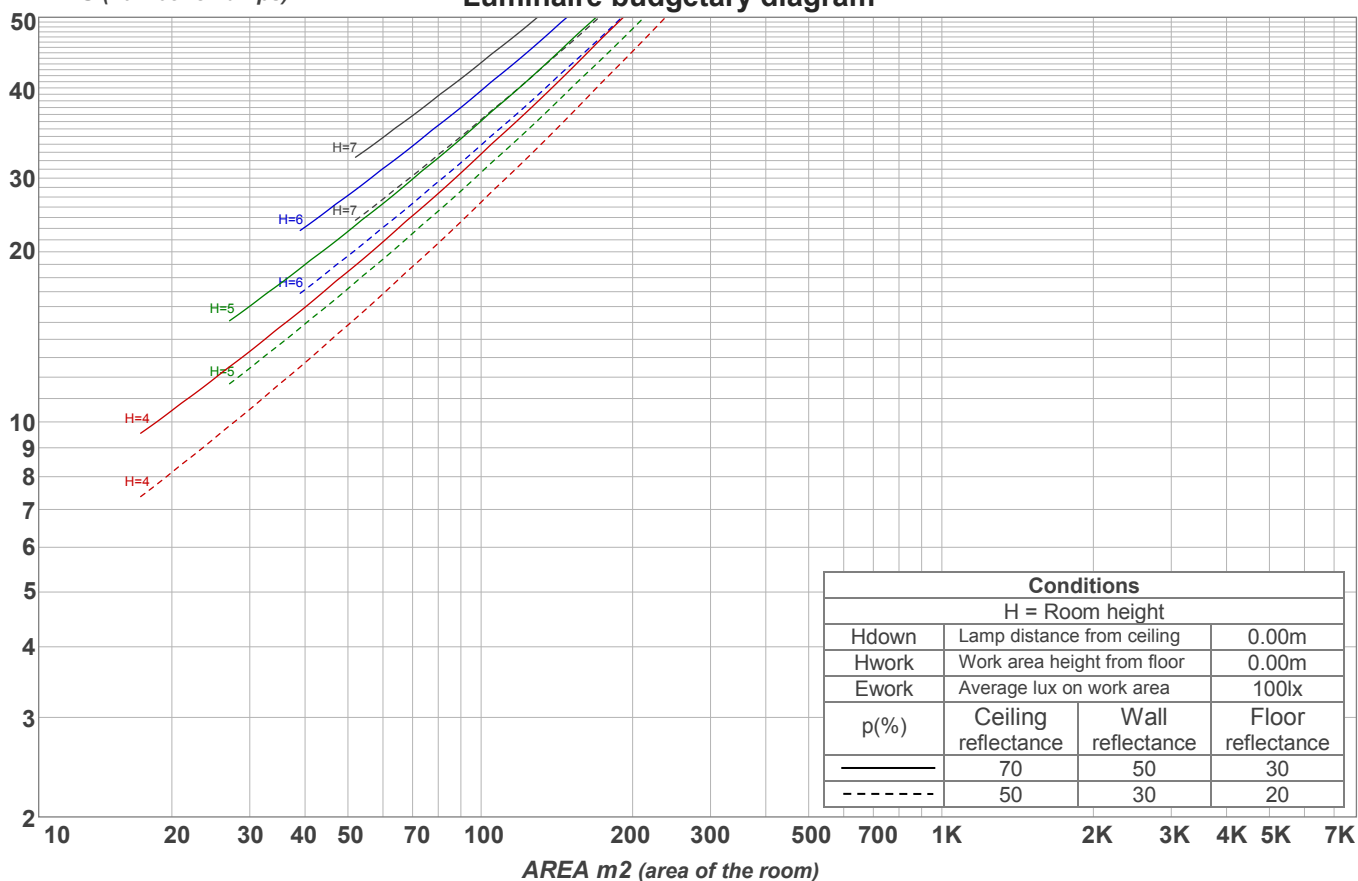
p Ceiling		70	70	50	50	30	70	70	50	50	30
p Walls		50	30	50	30	30	50	30	50	30	30
p Floor		20	20	20	20	20	20	20	20	20	20
Room size X Y		Viewing direction at right angles to lamp axis					Viewing direction parallel to lamp axis				
2H	2H	20,8	22,0	21,0	22,3	22,5	21,9	23,1	22,1	23,4	23,7
	3H	22,2	23,5	22,7	23,8	24,0	23,1	24,4	23,5	24,7	24,9
	4H	22,7	23,9	23,1	24,2	24,5	23,6	24,8	24,0	25,1	25,3
	6H	23,1	24,1	23,4	24,4	24,8	23,9	25,0	24,2	25,2	25,6
	8H	23,1	24,2	23,5	24,5	24,9	23,9	25,0	24,2	25,3	25,7
	12H	23,1	24,1	23,5	24,5	24,9	23,9	24,9	24,3	25,2	25,7
4H	2H	21,3	22,5	21,7	22,8	23,1	22,2	23,4	22,6	23,7	24,0
	3H	23,2	24,2	23,5	24,5	25,0	23,8	24,8	24,1	25,1	25,6
	4H	23,7	24,6	24,1	25,0	25,6	24,2	25,1	24,6	25,5	26,1
	6H	24,0	24,9	24,5	25,3	25,7	24,6	25,5	25,1	25,8	26,2
	8H	24,2	25,0	24,7	25,3	25,7	24,6	25,5	25,1	25,8	26,2
	12H	24,2	24,9	24,7	25,3	25,8	24,7	25,3	25,2	25,8	26,2
8H	4H	23,9	24,7	24,4	25,1	25,5	24,4	25,2	24,9	25,6	26,0
	6H	24,4	25,0	24,9	25,5	26,1	24,9	25,5	25,4	26,0	26,5
	8H	24,6	25,2	25,1	25,7	26,3	25,1	25,6	25,6	26,1	26,8
	12H	24,7	25,1	25,3	25,6	26,3	25,1	25,6	25,7	26,1	26,7
12H	4H	23,9	24,6	24,4	25,0	25,5	24,4	25,1	24,9	25,5	26,0
	6H	24,5	25,0	25,0	25,5	26,2	24,9	25,5	25,5	26,0	26,6
	8H	24,7	25,1	25,3	25,6	26,3	25,1	25,6	25,7	26,1	26,7
Variation of the observer position for the luminaire distance S											
S = 1.0H		0,3 / -0,3					0,1 / -0,1				
S = 1.5H		0,6 / -0,6					0,3 / -0,5				
S = 2.0H		0,9 / -0,6					0,8 / -0,9				
Standard table		n/a					n/a				
Correction summand		n/a					n/a				
Corrected glare indices referring to 603 lm total luminous flux											

Coefficients of Utilization

Ceiling reflectance	80				70				50			30			10			0
Wall reflectance	70	50	30	10	70	50	30	10	50	30	10	50	30	10	50	30	10	0
Floor reflectance	20	20	20	20	20	20	20	20	20	20	20	20	20	20	20	20	20	0
RCR	(RCR: Room Cavity Ratio) Room Values are expressed as percentage of Lumens delivered to the task surface																	
0	119	119	119	119	116	116	116	116	111	111	111	106	106	106	102	102	102	100
1	109	104	99	95	106	101	97	94	97	94	91	93	90	88	90	87	85	83
2	98	90	83	77	96	88	82	76	85	79	75	81	77	73	78	74	71	69
3	90	79	71	64	87	77	70	63	74	68	62	71	66	61	69	64	60	58
4	82	70	61	54	80	68	60	54	66	59	53	64	57	52	61	56	51	49
5	75	62	53	46	73	61	52	46	59	51	46	57	50	45	55	49	45	42
6	69	56	47	40	68	55	46	40	53	45	40	51	45	39	50	44	39	37
7	64	51	42	36	63	50	41	35	48	41	35	47	40	35	45	39	35	33
8	60	46	38	32	58	45	37	32	44	37	31	43	36	31	42	36	31	29
9	56	42	34	28	54	42	34	28	41	33	28	39	33	28	38	32	28	26
10	52	39	31	26	51	38	31	26	37	30	25	37	30	25	36	30	25	23

LAMPS (number of lamps)

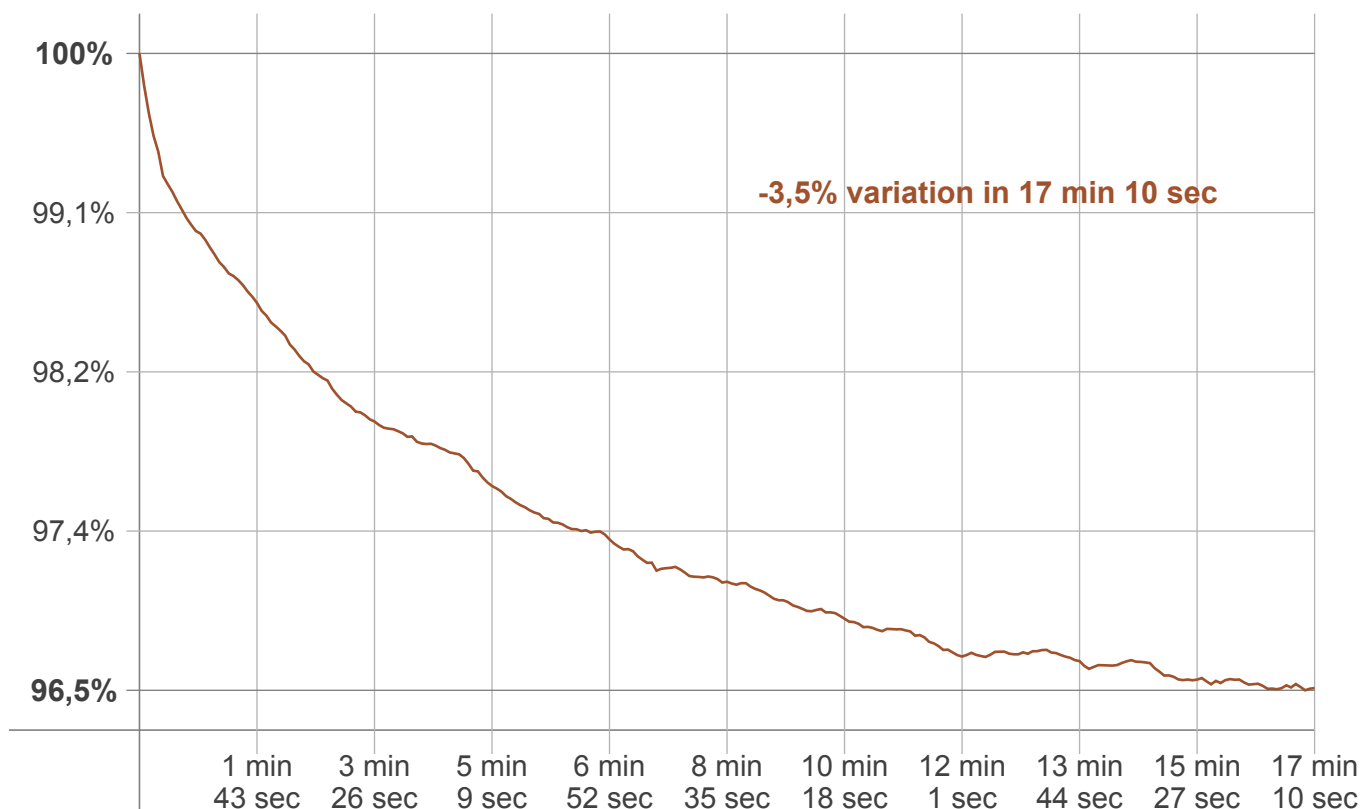
Luminaire budgetary diagram



Zonal Lumen Summary

0°-10°	10°-20°	20°-30°	30°-40°	40°-50°	50°-60°	60°-70°	70°-80°	80°-90°
19,2 lm	55,1 lm	84,4 lm	103 lm	112 lm	97,2 lm	76,0 lm	44,2 lm	12,5 lm
90°-100°	100°-110°	110°-120°	120°-130°	130°-140°	140°-150°	150°-160°	160°-170°	170°-180°
0,007 lm	0,000 lm	0,000 lm	0,000 lm	0,000 lm	0,000 lm	0,000 lm	0,000 lm	0,000 lm

Warmup curve



Warmup result

Warmup time:	17 min 10 sec
Warmup variation	-3,5%

Warmup conditions

Stable period:	15 min
Stable change max:	2,0%
Minimum time:	15 min

Color temperature change

CCT start	CCT change	CCT end
11507 K	+610 K	12117 K

Output change

Output start	Output change	Output end
622 lm	-19 lm	603 lm