

Light efficiency:

56 Lumen/Watt

Light quality:

CRI: 95,1

Color temperature:

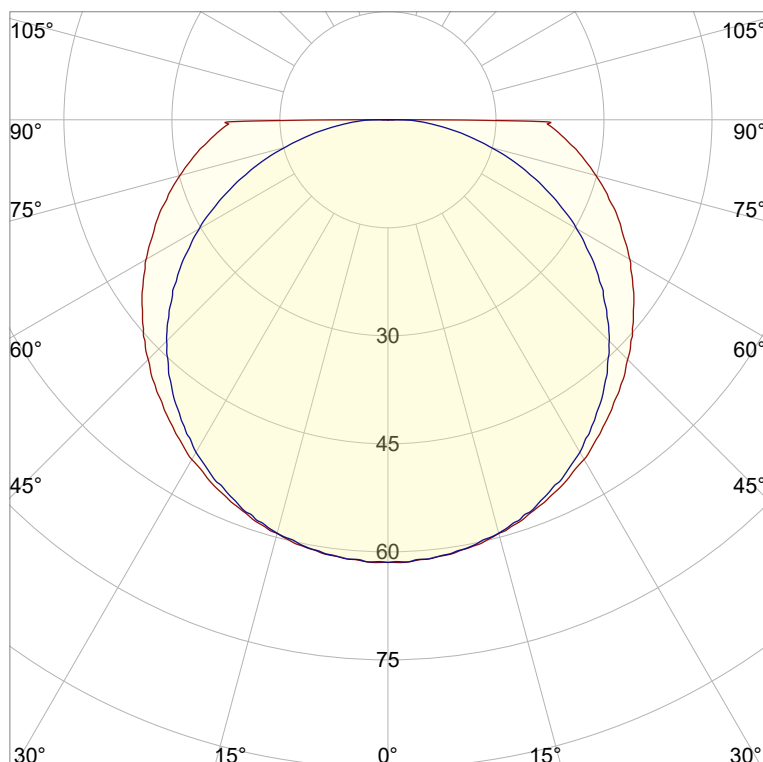
2627 K

Output: 243 lm

Peak: 61,6 cd

Power: 4,3 W

PF: 1,0



Product name:

Victory-7_510mm_927_Cover-Round-White

Item number:

NP/L1C/03F/G1/L1C/0510/927/CRW

Date and time:

01.06.2022 12:00:20

Description:

Rank: C80-AD-8GB

Tolerances:

Lumen +/-4%

Candela +/-2,5%

Colour Temp +/-35 Kelvin

CRI +/-0,7

Angular Resolution: 1 Degree Step

Last Calibration 20-09-2021

Tester: Peter Ulrich

Test Site: Lichtlabor

Gaustrasse 13

55411 Bingen am Rhein

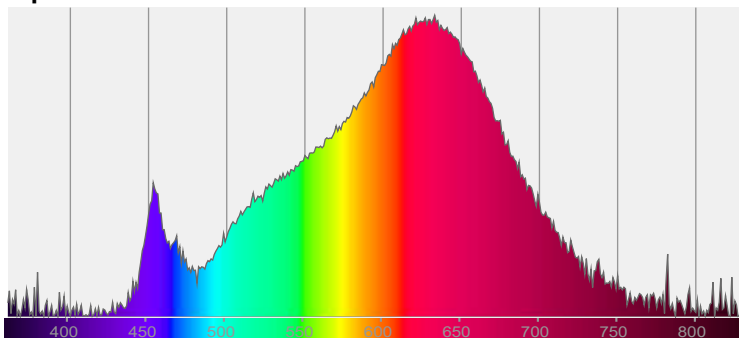


CIE 1931

x: 0,464

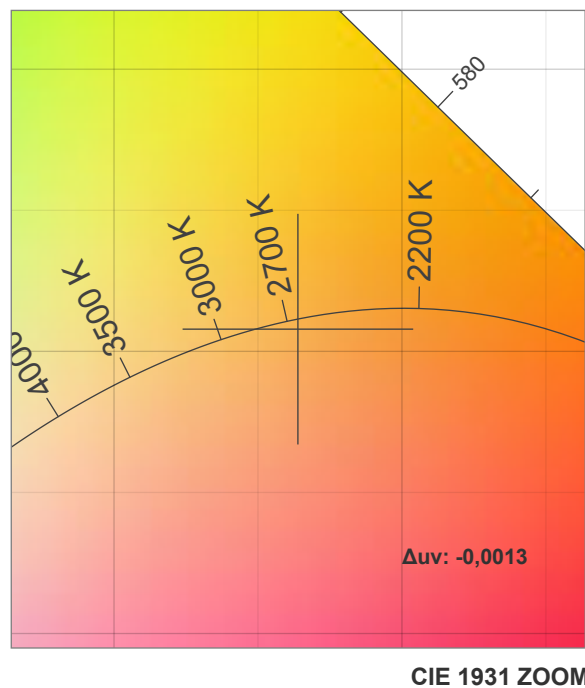
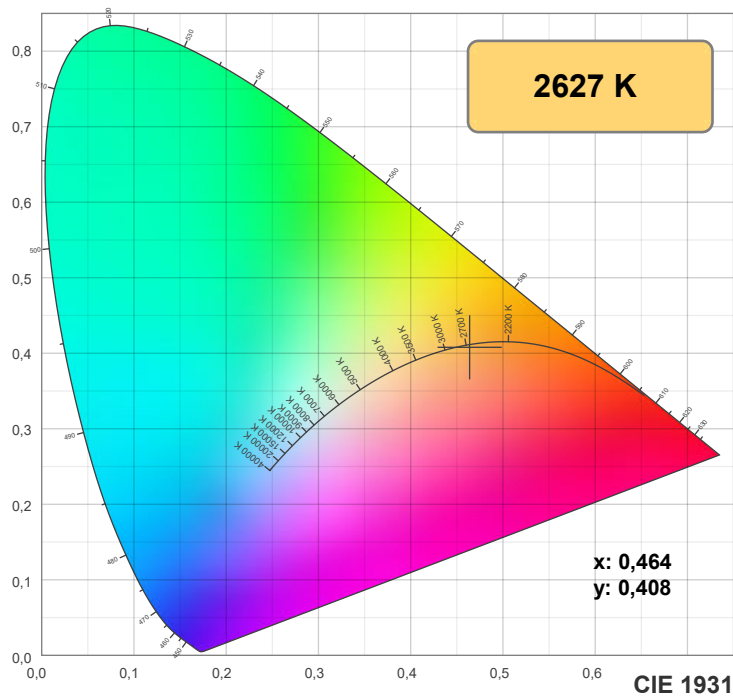
y: 0,408

Spectra

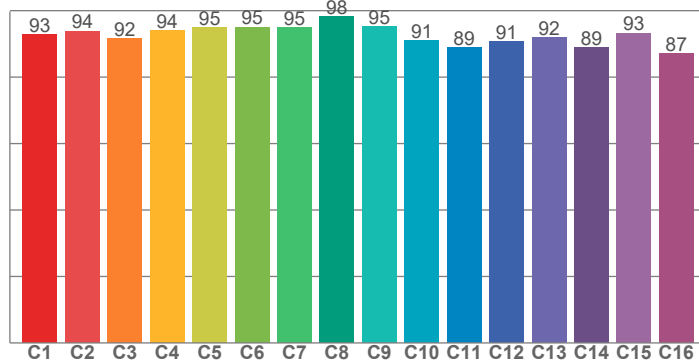


Power

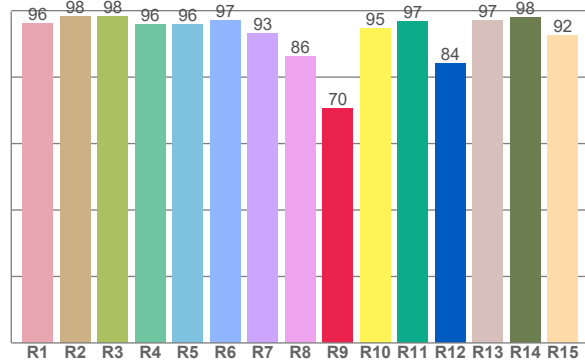
Voltage: 48,0 V
Current: 0,090 A
Frequency: 0 Hz



TM30: 92,6



CRI: 95,1 (R1-R8)



CRI R values, only R1-R8 are used to calculate final CRI value

R1	R2	R3	R4	R5	R6	R7	R8	R9	R10	R11	R12	R13	R14	R15
96,1	98,2	98,3	95,7	95,8	97,1	93,1	86,2	70,4	94,5	96,9	84,2	96,9	98,1	92,5

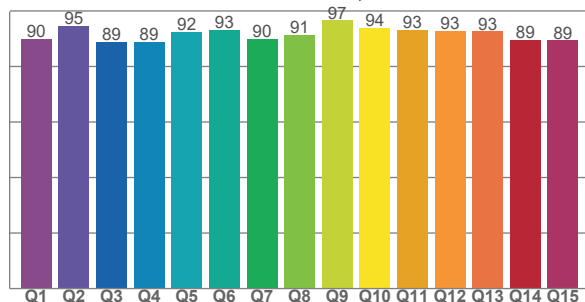
TM30 C values, 16 binned values out of total of 99 C values

C1	C2	C3	C4	C5	C6	C7	C8	C9	C10	C11	C12	C13	C14	C15	C16
92,7	93,9	91,7	94,1	94,9	95,0	94,8	98,2	95,2	91,1	88,8	90,8	91,9	88,9	93,3	87,0

CQS Q values

Q1	Q2	Q3	Q4	Q5	Q6	Q7	Q8	Q9	Q10	Q11	Q12	Q13	Q14	Q15
89,8	94,7	88,9	88,9	92,5	93,1	89,9	91,3	96,6	93,7	93,3	92,7	92,6	89,5	89,4

CQS: 91,3



Color parameters

Color temperature	Color rendering index	Red component	Color fidelity	Color gamut	Color quality scale	Color coordinate cie 1931	Color coordinate cie 1931	Color coordinate	Color coordinate	Color deviation from black body
CCT	CRI	CRI R9	TM30 Rf	TM30 Rg	CQS	x	y	u	v	Δuv
2627 K	95,1	70,4	92,6	100,6	91,3	0,464	0,408	0,266	0,351	-0,0013

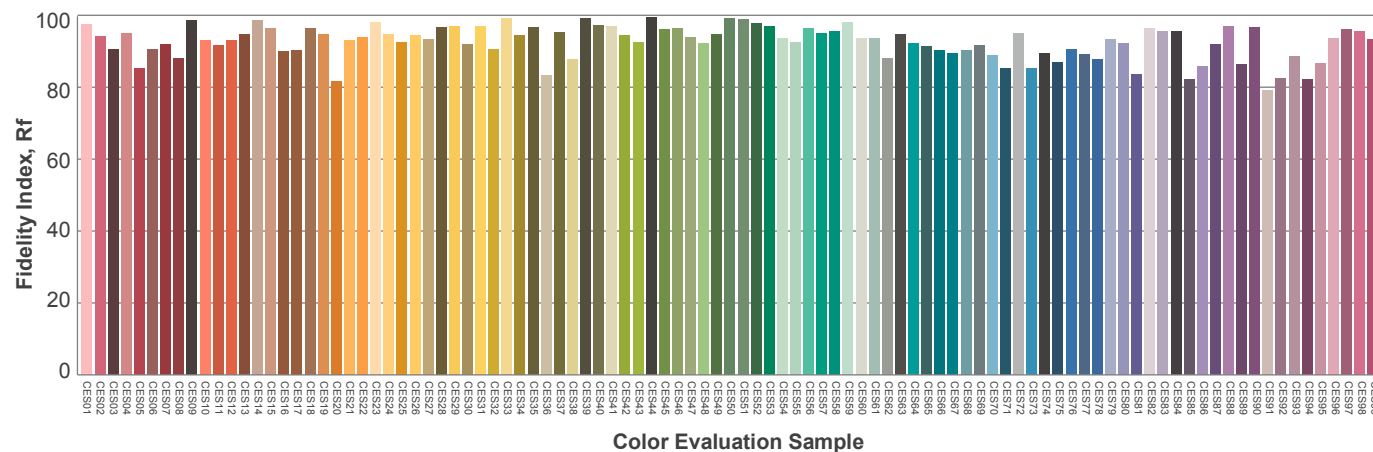
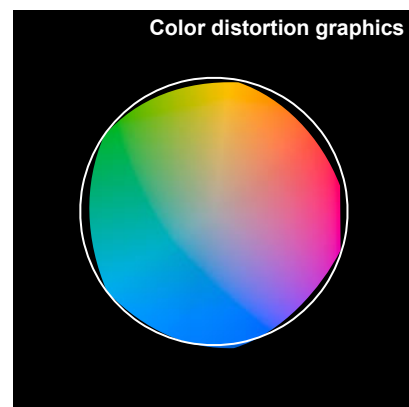
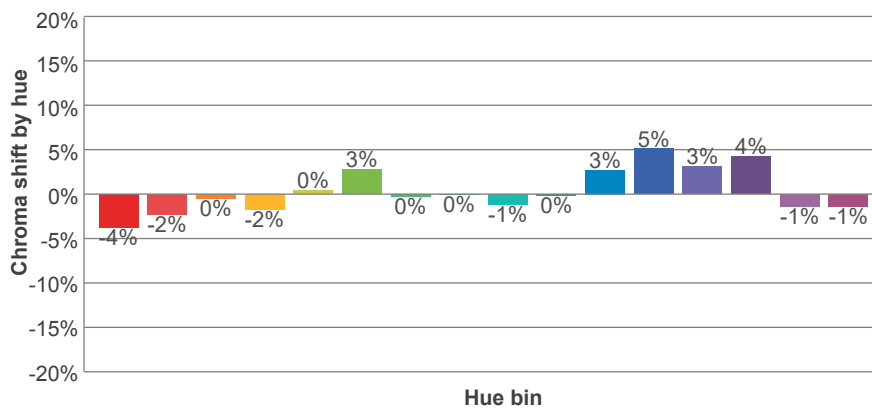
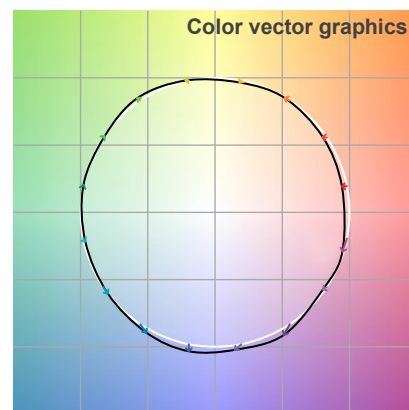
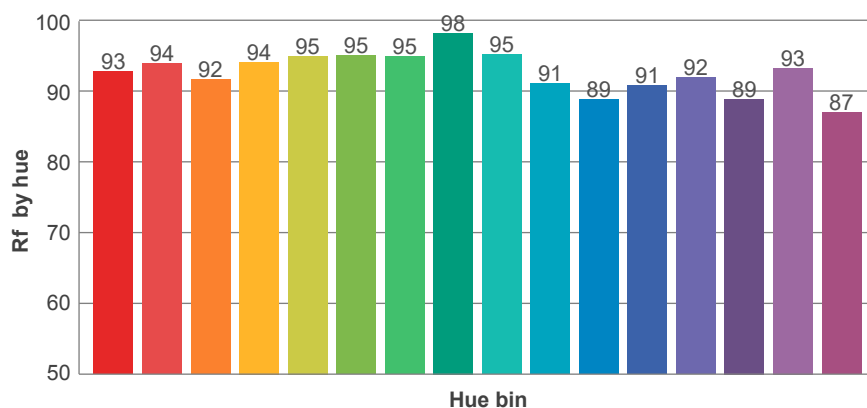
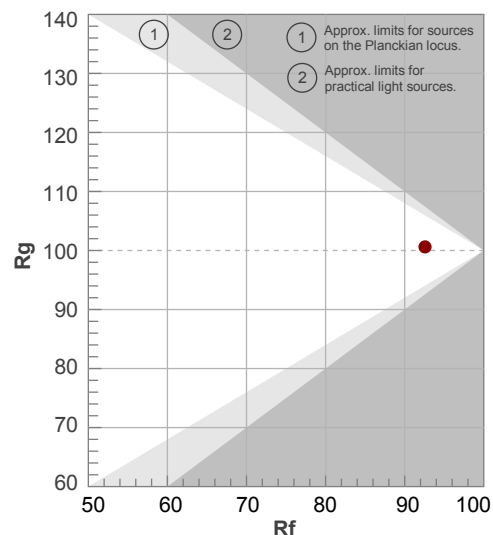
Rf 92,6

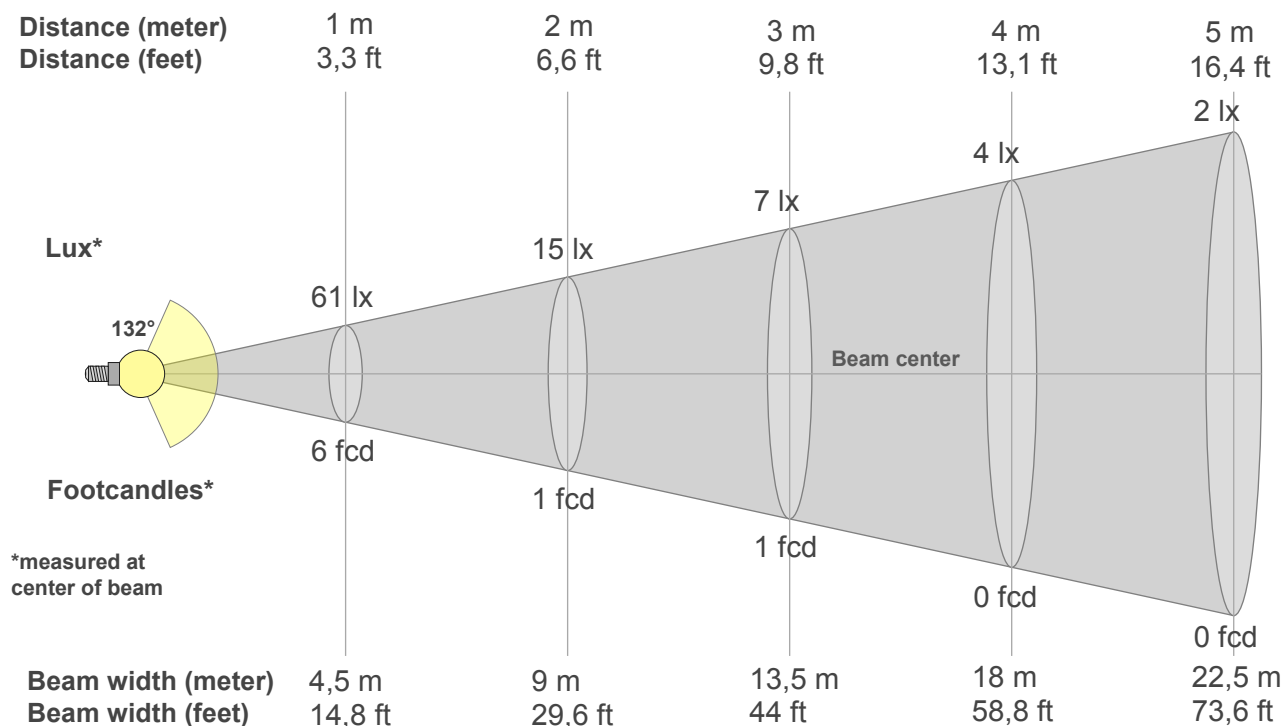
Fidelity index Rf

Rg 100,6

Gammut index Rg

Hue Bin	R _f	Graphic shifts (%)	
		Chroma	Hue
1	93	-4%	0%
2	94	-2%	2%
3	92	0%	4%
4	94	-2%	1%
5	95	0%	2%
6	95	3%	1%
7	95	0%	-1%
8	98	0%	-1%
9	95	-1%	2%
10	91	0%	6%
11	89	3%	7%
12	91	5%	1%
13	92	3%	-5%
14	89	4%	-8%
15	93	-1%	-3%
16	87	-1%	-10%





Beam intensities from 1-20m

1m	2m	3m	4m	5m	6m	7m	8m	9m	10m	11m	12m	13m	14m	15m	16m	17m	18m	19m	20m
3,3ft	6,6ft	9,8ft	13,1ft	16,4ft	19,7ft	23ft	26,2ft	29,5ft	32,8ft	36,1ft	39,4ft	42,7ft	45,9ft	49,2ft	52,5ft	55,8ft	59,1ft	62,3ft	65,6ft
61lx	15lx	7lx	4lx	2lx	2lx	1lx	1lx	1lx	1lx	1lx	0lx	0lx	0lx	0lx	0lx	0lx	0lx	0lx	0lx
5,7fcd	1,4fcd	0,6fcd	0,4fcd	0,2fcd	0,2fcd	0,1fcd	0,1fcd	0,1fcd	0,1fcd	0fcd	0fcd	0fcd	0fcd	0fcd	0fcd	0fcd	0fcd	0fcd	0fcd

Intensities in 0° c-plane

0°	9°	18°	27°	36°	45°	54°	63°	72°	81°	90°	99°	108°	117°	126°	135°	144°	153°	162°	171°
61,5	60,8	58,8	55,6	51,6	47,1	42,2	36,9	31,7	26,5	10,6	9,5	8,5	7,4	6,3	5,3	4,2	3,1	2,1	1,0
100%	99%	96%	90%	84%	77%	69%	60%	52%	43%	17%	16%	14%	12%	10%	9%	7%	5%	3%	2%

Intensities in 90° c-plane

0°	9°	18°	27°	36°	45°	54°	63°	72°	81°	90°	99°	108°	117°	126°	135°	144°	153°	162°	171°
61,5	60,7	58,5	54,8	49,7	43,4	35,9	27,2	18,0	9,0	1,4	1,3	1,1	1,0	0,8	0,7	0,6	0,4	0,3	0,1
100%	99%	95%	89%	81%	71%	58%	44%	29%	15%	2%	2%	2%	2%	1%	1%	1%	1%	0%	0%

Intensities in 180° c-plane

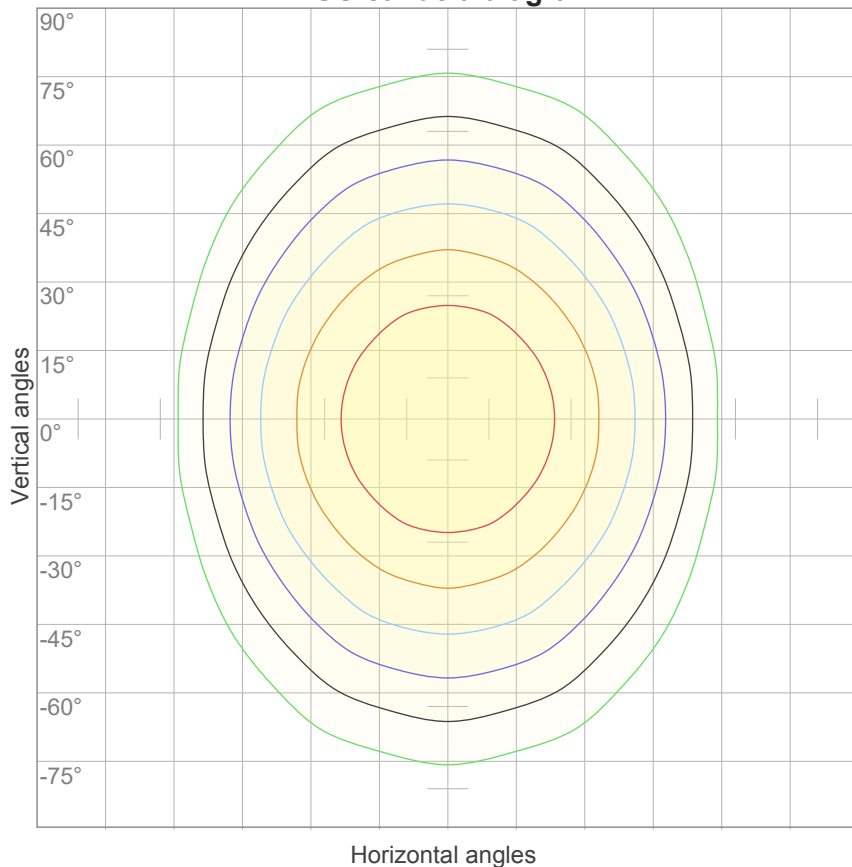
0°	9°	18°	27°	36°	45°	54°	63°	72°	81°	90°	99°	108°	117°	126°	135°	144°	153°	162°	171°
61,5	60,8	58,8	55,6	51,6	47,1	42,2	36,9	31,7	26,5	10,6	9,5	8,5	7,4	6,3	5,3	4,2	3,1	2,1	1,0
100%	99%	96%	90%	84%	77%	69%	60%	52%	43%	17%	16%	14%	12%	10%	9%	7%	5%	3%	2%

Intensities in 270° c-plane

0°	9°	18°	27°	36°	45°	54°	63°	72°	81°	90°	99°	108°	117°	126°	135°	144°	153°	162°	171°
61,5	60,7	58,5	54,8	49,7	43,4	35,9	27,2	18,0	9,0	1,4	1,3	1,1	1,0	0,8	0,7	0,6	0,4	0,3	0,1
100%	99%	95%	89%	81%	71%	58%	44%	29%	15%	2%	2%	2%	2%	1%	1%	1%	1%	0%	0%

Beam angle 50%	Field angle 10%	Cutoff angle 2,5%	Intensity ratio in 120° cone	Intensity ratio in 90° cone
132°	194,5°	217,4°	61,6%	40,3%

ISO candela diagram



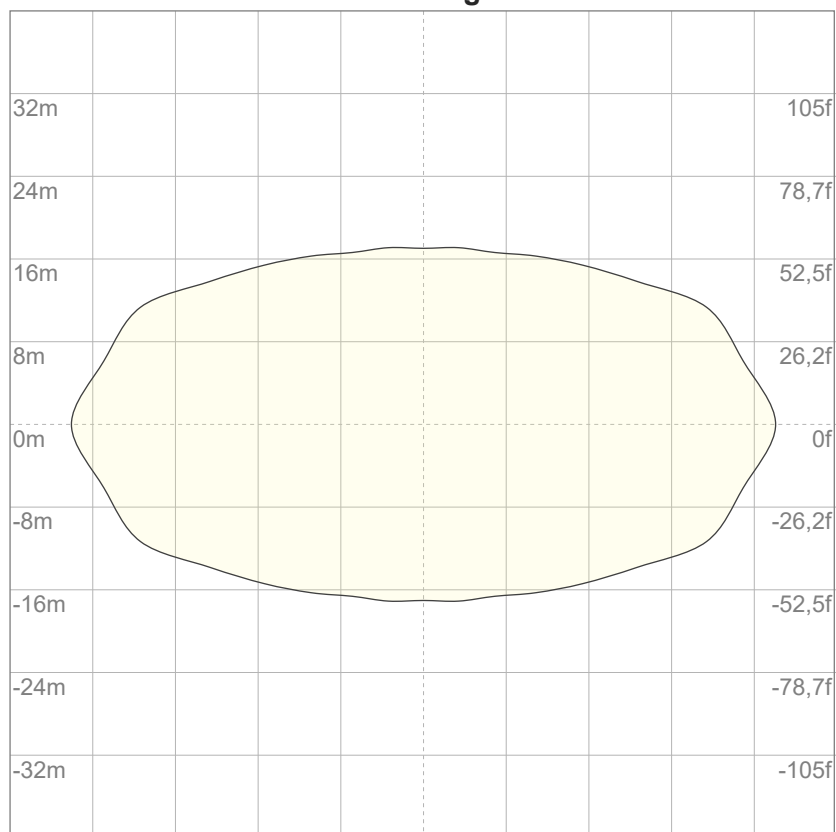
10%	6 cd
20%	12 cd
30%	18 cd
40%	25 cd
50%	31 cd
60%	37 cd
70%	43 cd
80%	49 cd
90%	55 cd

Conditions:

Number of c-planes: 16

Candela at center: 61 cd

ISO lux diagram



3%	18,4m lx
5%	30,7m lx
10%	61,5m lx
30%	0,184 lx
50%	0,307 lx

Conditions:

Number of c-planes: 16

Lux at center: 0,615 lx

*Lux distribution on a surface
when lamp is mounted at 10
meters from the surface.*

Glare Evaluation According to UGR

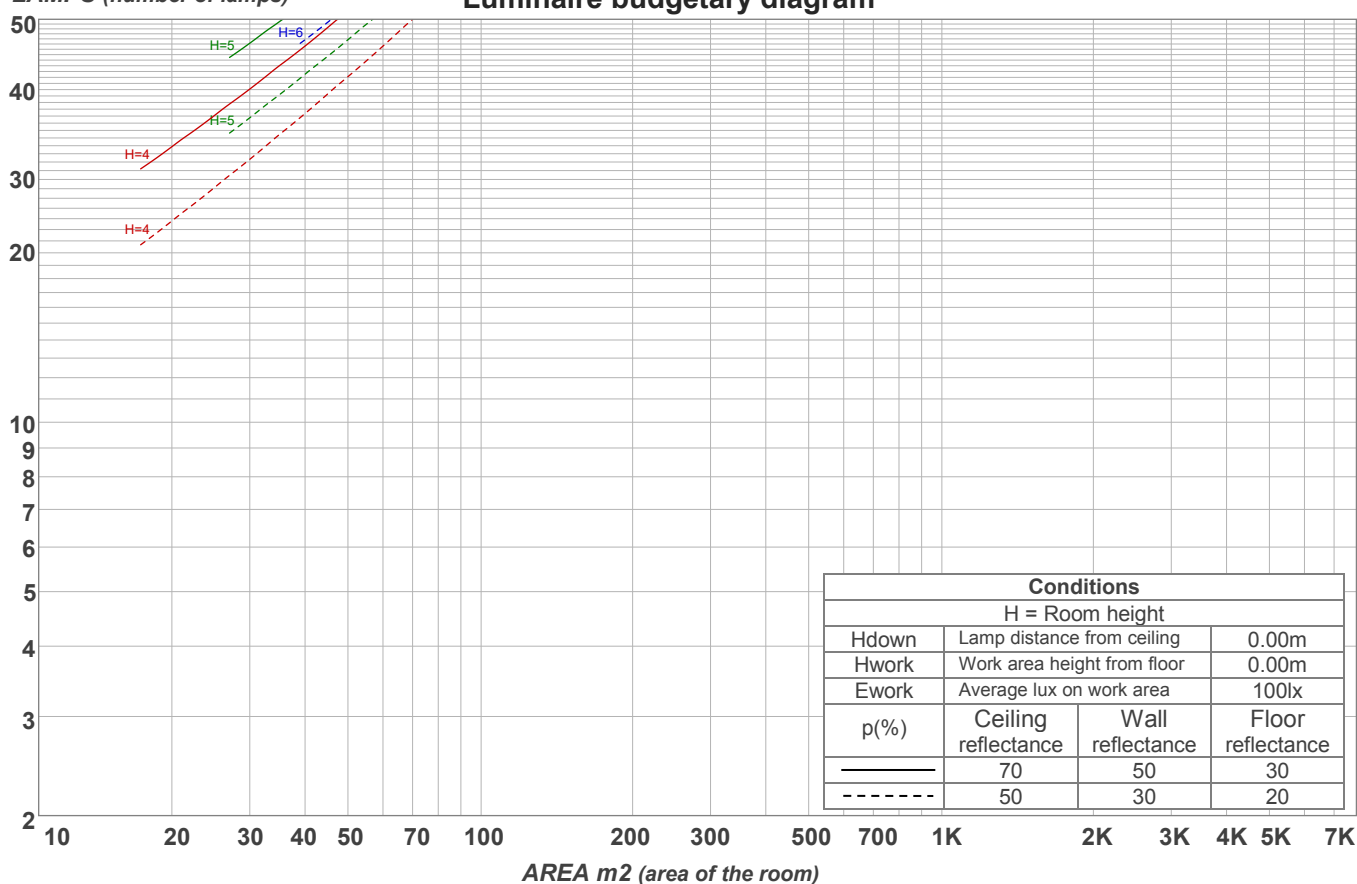
p Ceiling		70	70	50	50	30	70	70	50	50	30
p Walls		50	30	50	30	30	50	30	50	30	30
p Floor		20	20	20	20	20	20	20	20	20	20
Room size X Y		Viewing direction at right angles to lamp axis					Viewing direction parallel to lamp axis				
2H	2H	17,0	18,4	17,3	18,7	18,9	17,1	18,5	17,4	18,8	19,0
	3H	19,0	20,4	19,4	20,8	21,0	18,8	20,2	19,2	20,5	20,7
	4H	20,1	21,4	20,5	21,7	22,0	19,6	20,9	20,0	21,2	21,5
	6H	21,2	22,4	21,5	22,7	23,1	20,3	21,5	20,6	21,8	22,2
	8H	21,7	22,9	22,0	23,2	23,6	20,5	21,7	20,9	22,0	22,4
	12H	22,1	23,3	22,5	23,6	24,1	20,7	21,9	21,1	22,2	22,7
4H	2H	17,7	19,1	18,1	19,3	19,6	17,7	19,1	18,2	19,4	19,7
	3H	20,0	21,2	20,4	21,5	22,0	19,7	20,9	20,1	21,2	21,7
	4H	21,2	22,3	21,6	22,7	23,2	20,6	21,7	21,0	22,1	22,6
	6H	22,4	23,4	22,9	23,8	24,2	21,4	22,4	21,9	22,8	23,1
	8H	23,0	23,9	23,5	24,3	24,7	21,7	22,6	22,2	23,0	23,4
	12H	23,6	24,4	24,1	24,8	25,3	22,0	22,8	22,5	23,2	23,7
8H	4H	21,6	22,5	22,1	22,9	23,3	21,1	22,0	21,6	22,4	22,8
	6H	23,1	23,8	23,6	24,3	24,8	22,1	22,8	22,6	23,3	23,9
	8H	23,8	24,5	24,3	25,0	25,7	22,5	23,2	23,1	23,7	24,4
	12H	24,6	25,2	25,2	25,7	26,3	23,0	23,5	23,5	24,0	24,7
12H	4H	21,6	22,4	22,1	22,9	23,4	21,2	22,0	21,7	22,4	22,9
	6H	23,2	23,9	23,7	24,4	25,0	22,3	23,0	22,8	23,5	24,1
	8H	24,0	24,6	24,6	25,1	25,7	22,8	23,4	23,4	23,9	24,5
Variation of the observer position for the luminaire distance S											
S = 1.0H		0,1 / 0,0					0,0 / 0,0				
S = 1.5H		0,1 / -0,1					0,1 / -0,1				
S = 2.0H		0,2 / -0,2					0,3 / -0,3				
Standard table		n/a					n/a				
Correction summand		n/a					n/a				
Corrected glare indices referring to 243 lm total luminous flux											

Coefficients of Utilization

Ceiling reflectance	80				70				50			30			10			0
Wall reflectance	70	50	30	10	70	50	30	10	50	30	10	50	30	10	50	30	10	0
Floor reflectance	20	20	20	20	20	20	20	20	20	20	20	20	20	20	20	20	20	0
RCR	(RCR: Room Cavity Ratio) Room Values are expressed as percentage of Lumens delivered to the task surface																	
0	117	117	117	117	113	113	113	113	106	106	106	100	100	100	94	94	94	91
1	104	98	93	88	100	95	90	85	89	85	81	83	80	77	78	76	73	70
2	93	84	76	69	90	81	74	68	76	70	65	71	66	62	67	63	59	56
3	84	73	64	56	81	70	62	55	66	59	53	62	56	51	58	53	49	46
4	77	64	54	47	74	62	53	46	58	51	45	55	48	43	52	46	41	39
5	71	57	47	40	68	55	46	39	52	44	38	49	42	37	46	40	36	33
6	65	51	41	35	62	49	40	34	47	39	33	44	37	32	42	36	31	29
7	60	46	37	30	58	45	36	30	42	35	29	40	33	28	38	32	27	25
8	56	42	33	27	54	41	32	26	39	31	26	37	30	25	35	29	24	22
9	52	38	30	24	50	37	29	24	35	28	23	34	27	22	32	26	22	20
10	49	35	27	22	47	34	27	21	33	26	21	31	25	20	30	24	20	18

LAMPS (number of lamps)

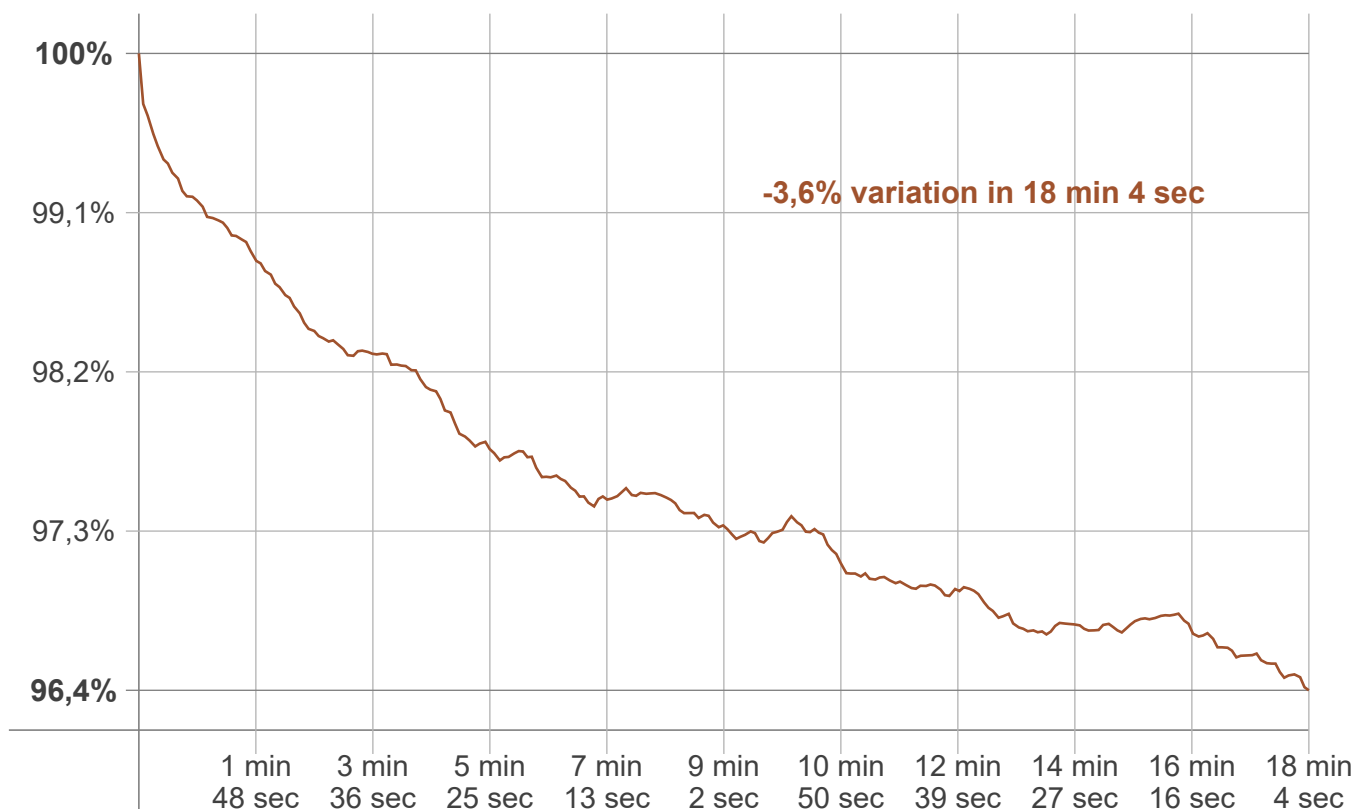
Luminaire budgetary diagram



Zonal Lumen Summary

0°-10°	10°-20°	20°-30°	30°-40°	40°-50°	50°-60°	60°-70°	70°-80°	80°-90°
5,82 lm	16,8 lm	25,9 lm	32,1 lm	34,9 lm	34,2 lm	30,5 lm	24,6 lm	17,4 lm
90°-100°	100°-110°	110°-120°	120°-130°	130°-140°	140°-150°	150°-160°	160°-170°	170°-180°
6,82 lm	4,70 lm	3,17 lm	2,57 lm	1,62 lm	0,854 lm	0,629 lm	0,385 lm	0,130 lm

Warmup curve



Warmup result

Warmup time:	Lamp stabilized in 18 min 4 sec
Warmup variation	-3,6%

Warmup conditions

Stable period:	15 min
Stable change max:	2,0%
Minimum time:	15 min

Color temperature change

CCT start	CCT change	CCT end
2631 K	-4 K	2627 K

Output change

Output start	Output change	Output end
249 lm	-6 lm	243 lm